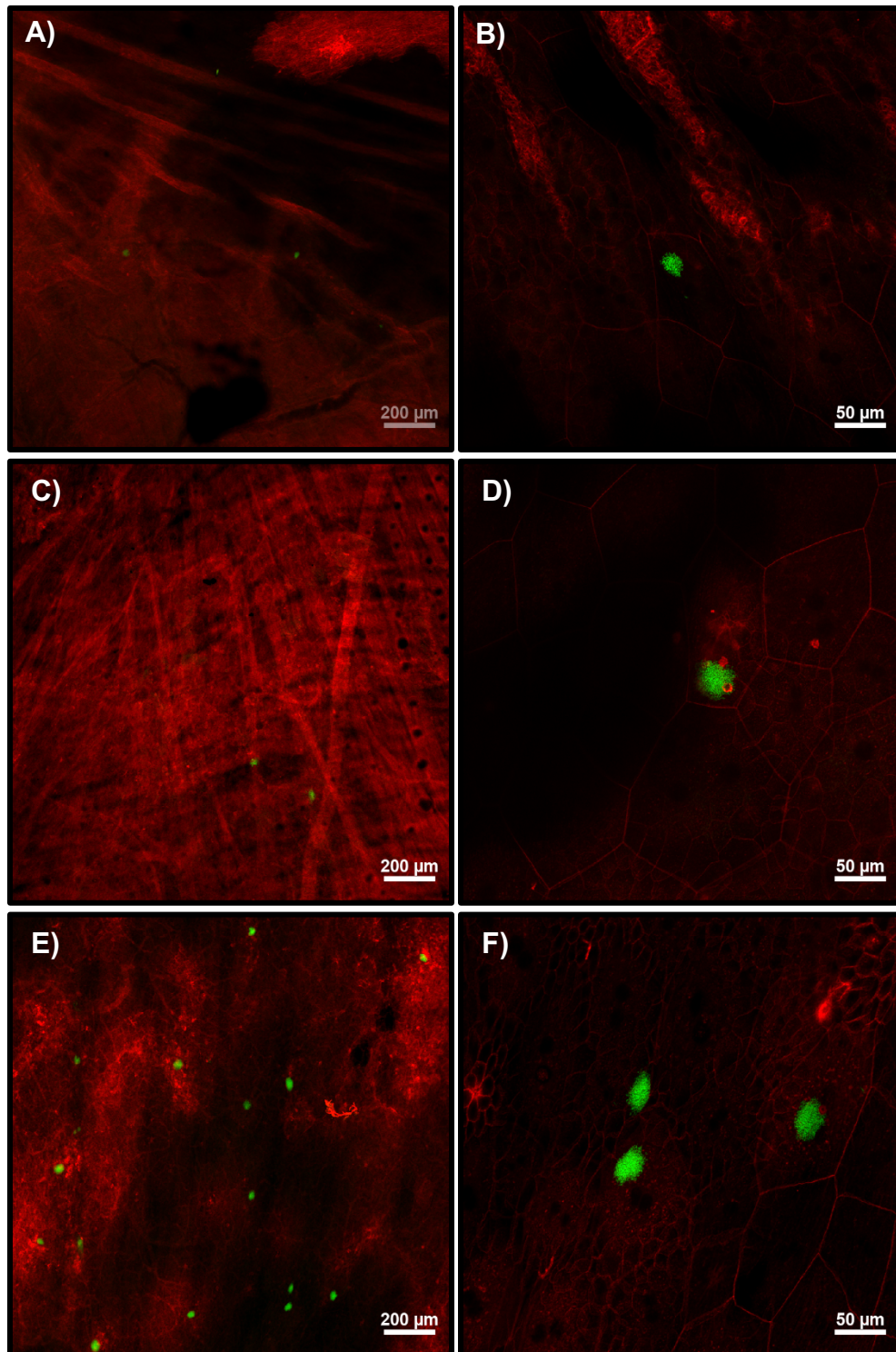


Supplementary Figure S1: Representative images of IBCs of (A and B) UT189, (C and D) $\Delta rssB$, and (E and F) $\Delta arcAB$ transformed with pCOM-GFP with images taken with a 5X (A, C, E) and 20X objective (B, D, F).



Supplementary Figure S2: Urine bacterial titers during the course of long-term 28-day UTI model for A) UTI89, B) $\Delta arcA\Delta arcB$, C) $\Delta narXL$, D) $\Delta phoPQ$, and E) $\Delta rssB$. Solid lines connect the urine bacterial titers for each individual mouse. Horizontal dashed lines represent 10^4 CFU/mL, the lower limit of persistent bacteriuria.

