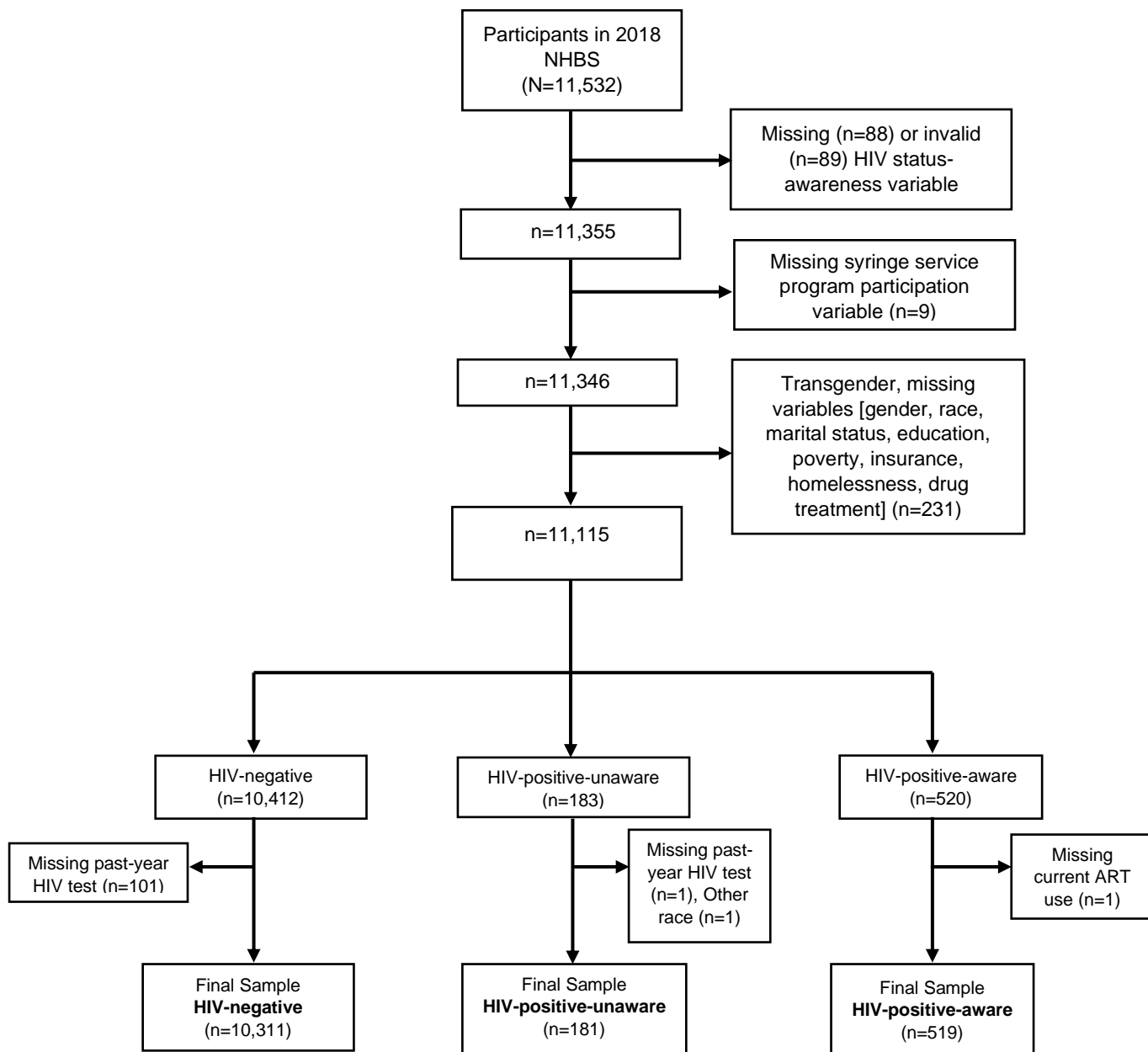


Past-year HIV testing, current antiretroviral therapy use, and participation in services for people who inject drugs



**Supplementary Figure S1.** Flowchart of selection of study population from the 2018 National HIV Behavioral Surveillance data. A total of 10,311 HIV-negative, 181 HIV-positive-unaware, and 519 HIV-positive-aware PWID were included in the current study.