

Supplementary information

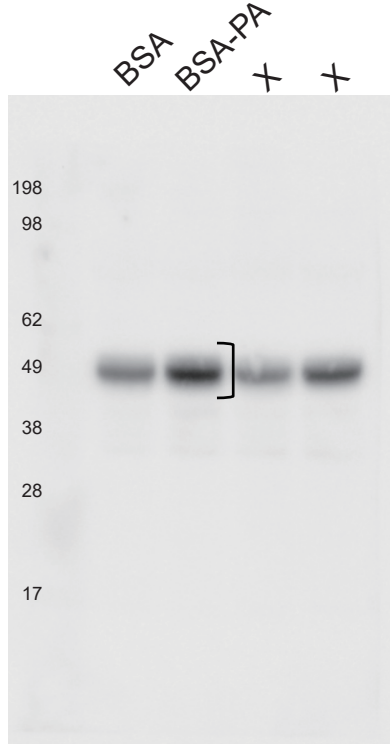
Palmitoyl-L-carnitine induces tau phosphorylation and mitochondrial dysfunction in neuronal cells

Gwangho Yoon, Min Kyoung Kam, Young Ho Koh, and Chulman Jo*

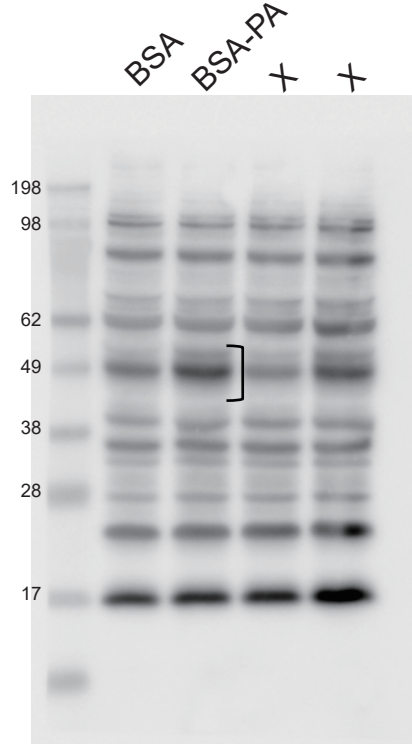
This S1 File contains uncropped full blots

A. Full scans of uncropped blots (For Fig 2)

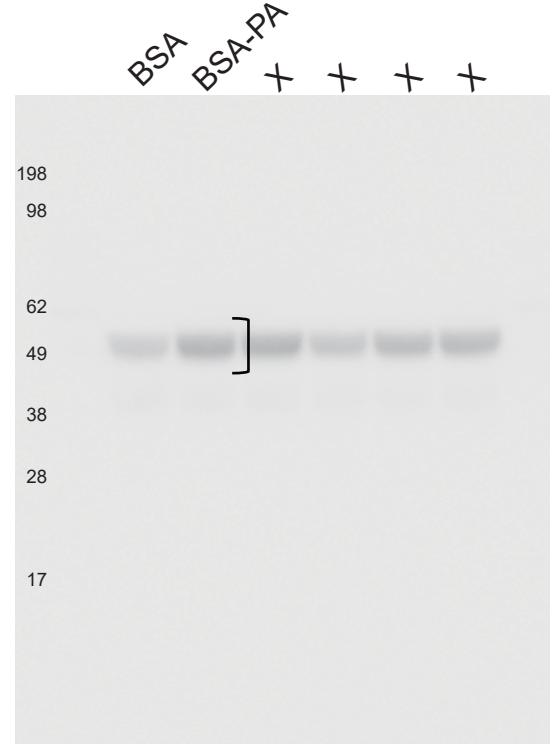
pTau (T181)



pTau (S262)

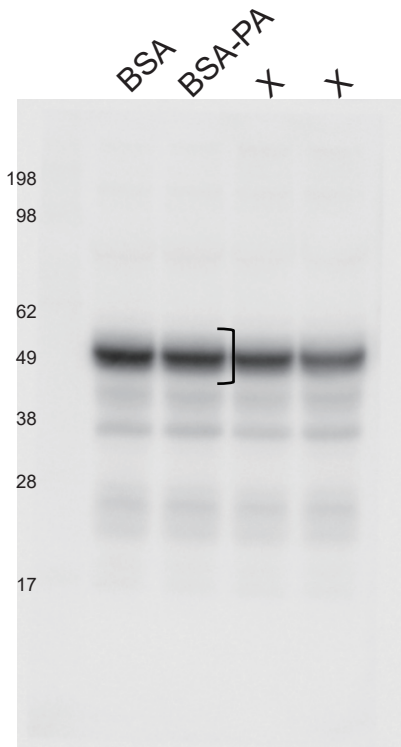


PHF-1

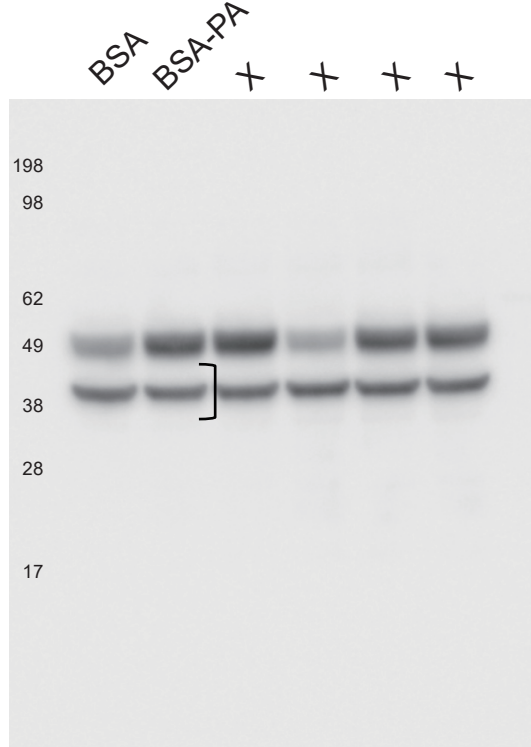


] Cropped region

Total tau



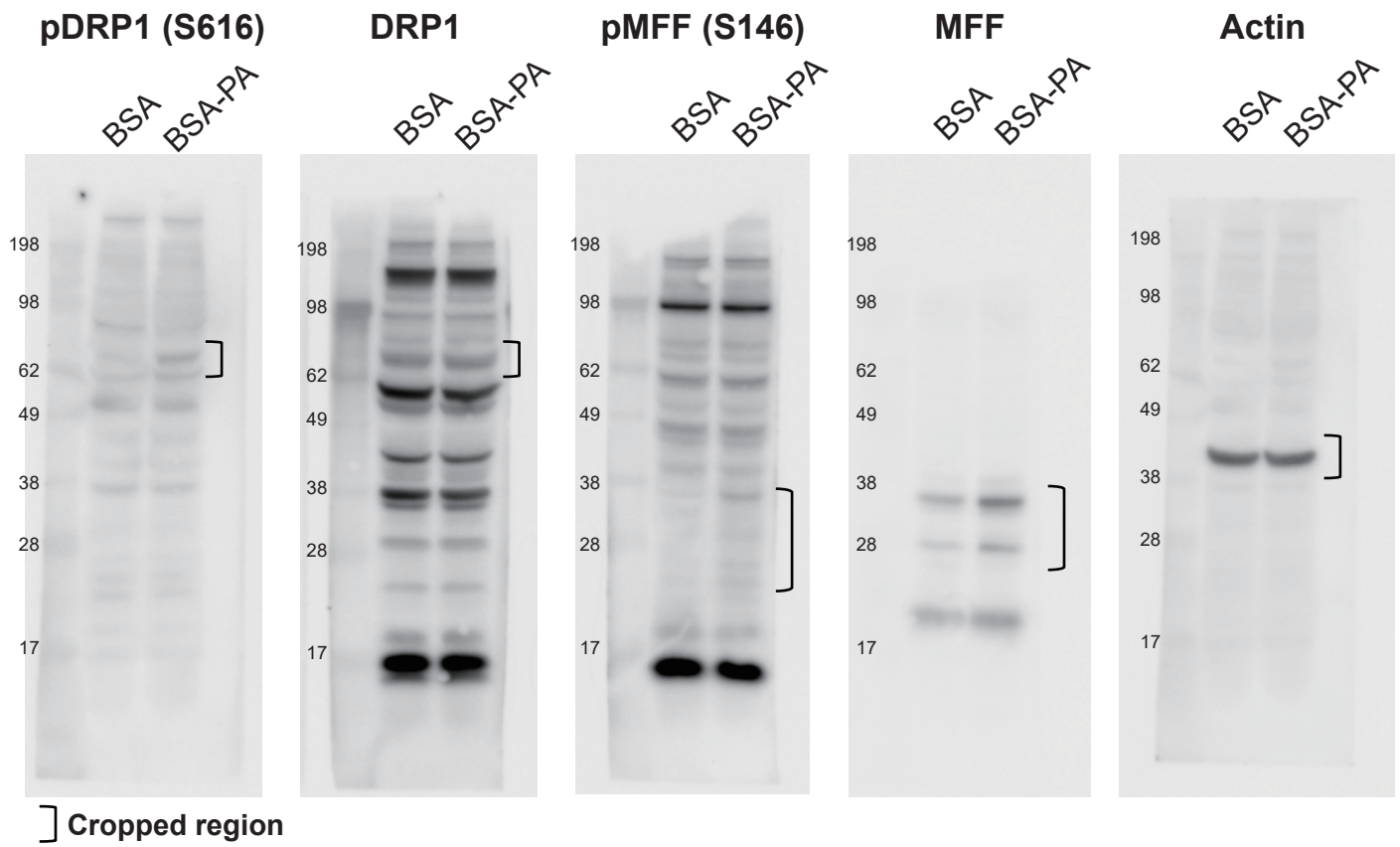
Actin



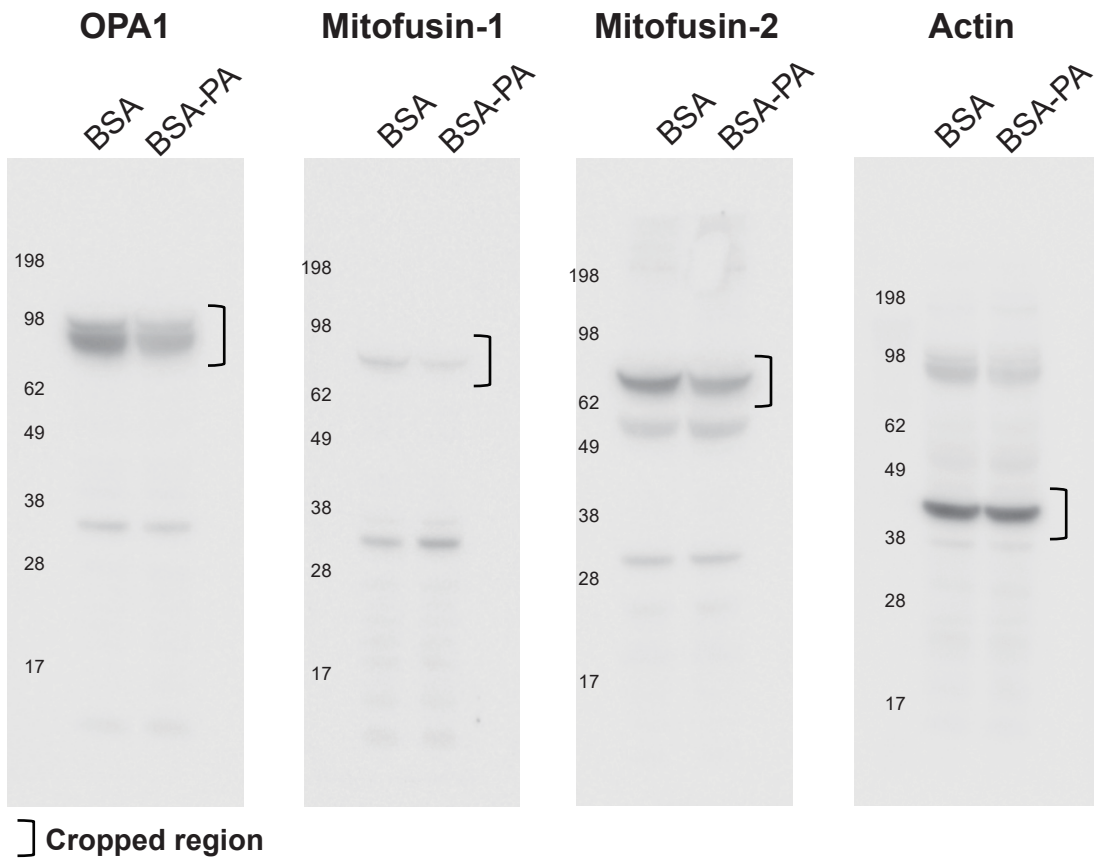
] Cropped region

B. Full scans of uncropped blots (For Fig 3)

For Fig3A

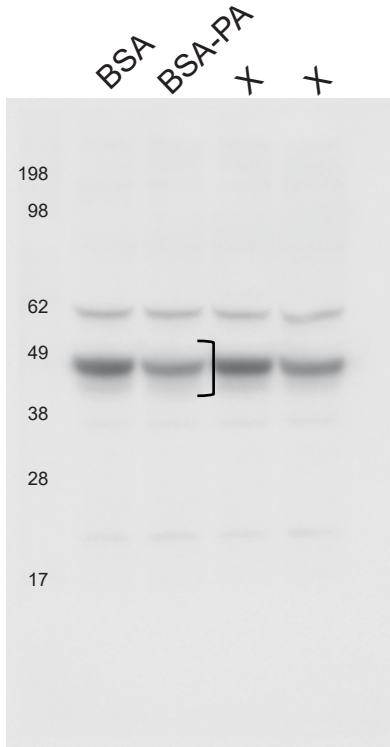


For Fig3C



C. Full scans of uncropped blots (For Fig 5A)

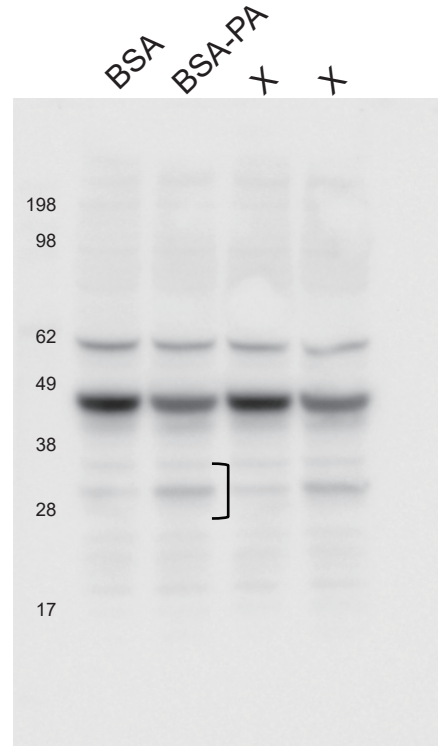
p-GSK-3 β (S9)



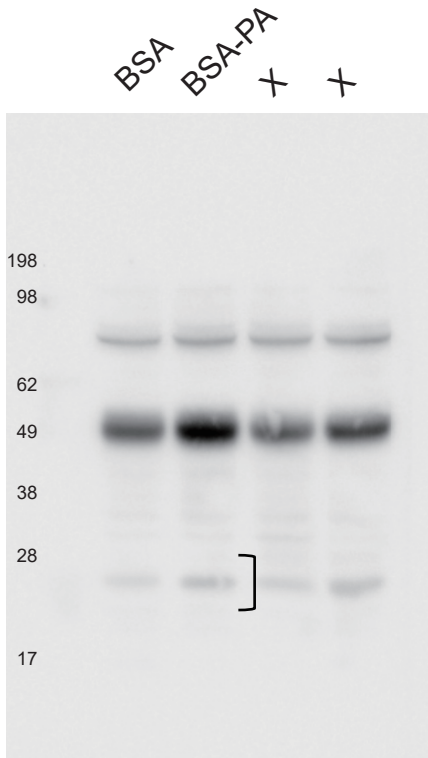
GSK-3 β



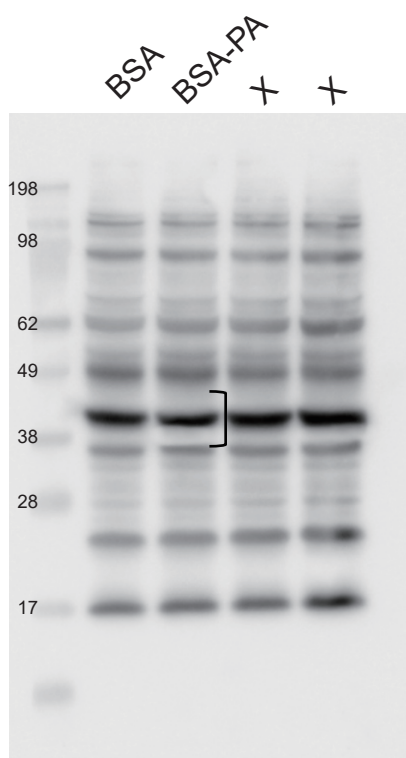
CDK5



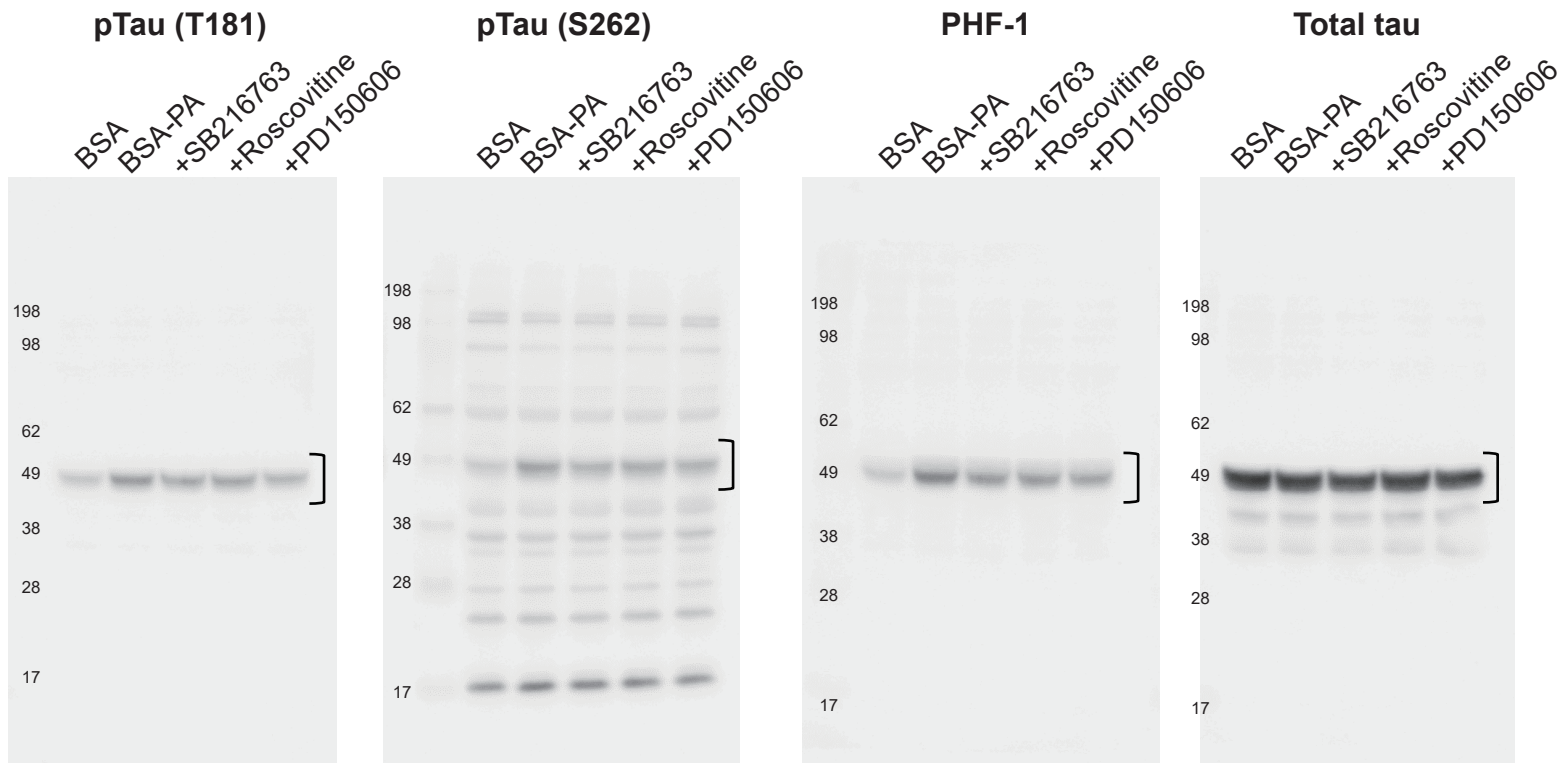
p25



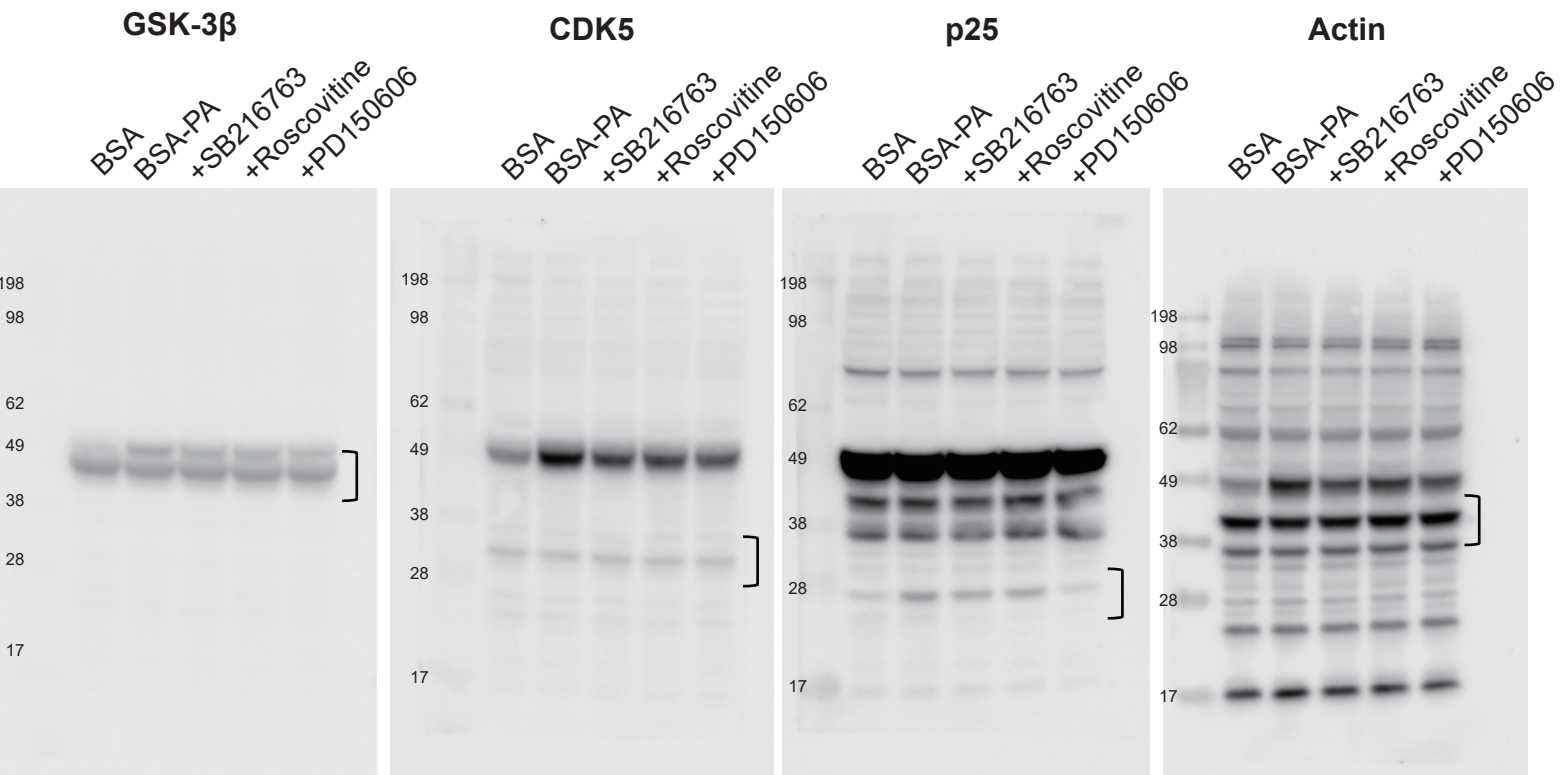
Actin



D. Full scans of uncropped blots (For Fig 5B)



Cropped region



Cropped region