

Short Communication

Aggregation of α -Synuclein in Lewy Bodies of Sporadic Parkinson's Disease and Dementia with Lewy Bodies

Minami Baba,* Shigeo Nakajo,[†] Pang-Hsien Tu,[‡]
Taisuke Tomita,* Kazuyasu Nakaya,[†]
Virginia M.-Y. Lee,[‡] John Q. Trojanowski,[‡] and
Takeshi Iwatsubo*

From the Department of Neuropathology and Neuroscience, Graduate School of Pharmaceutical Sciences, University of Tokyo, and the Laboratory of Biological Chemistry,[†] School of Pharmaceutical Sciences, Showa University, Tokyo, Japan, and the Center for Neurodegenerative Disease Research,[‡] Department of Pathology and Laboratory Medicine, University of Pennsylvania, Philadelphia, Pennsylvania*

Lewy bodies (LBs) are hallmark lesions of degenerating neurons in the brains of patients with Parkinson's disease (PD) and dementia with Lewy bodies (DLB). Recently, a point mutation in the gene encoding the presynaptic α -synuclein protein was identified in some autosomal-dominantly inherited familial PD pedigrees, and light microscopic studies demonstrated α -synuclein immunoreactivity in LBs of sporadic PD and DLB. To characterize α -synuclein in LBs, we raised monoclonal antibodies (MAbs) to LBs purified from DLB brains and obtained a MAb specific for α -synuclein that intensely labeled LBs. Light and electron microscopic immunocytochemical studies performed with this MAb as well as other antibodies to α - and β -synuclein showed that α -synuclein, but not β -synuclein, is a component of LBs in sporadic PD and DLB. Western blot analyses of highly purified LBs from DLB brains showed that full-length as well as partially truncated and insoluble aggregates of α -synuclein are deposited in LBs. Thus, these data strongly implicate α -synuclein in the formation of LBs and the selective degeneration of neurons in sporadic PD and DLB. (*Am J Pathol* 1998, 152:879–884)

Parkinson's disease (PD) is the most common neurodegenerative disorder affecting brainstem extrapyramidal neurons (eg, dopaminergic substantia nigra neurons) of middle-age individuals.¹ Spherical filamentous inclusions

known as Lewy bodies (LBs) form in perikarya of degenerating brainstem neurons, and these lesions are diagnostic of PD.^{2–4} However, LBs also are found in a subset of cortical neurons in a late-life neurodegenerative disorder known as dementia with LBs (DLB), the second most frequent dementia after Alzheimer's disease.^{5–7} Neurofilament subunits^{8–12} and ubiquitin (Ub)^{13–17} are implicated as major components of LBs in PD and DLB, but the precise building blocks of LBs still remain unclear. Recent studies showed that α -synuclein, a 140-amino-acid protein localized to presynaptic terminals,^{18,19} harbors an Ala to Thr substitution at position 53 (A53T) due to a missense mutation of the α -synuclein gene in four pedigrees with autosomal-dominantly inherited familial PD.²⁰ Furthermore, immunoreactive α -synuclein has been demonstrated by light microscopy in LBs of sporadic PD and DLB.²¹

To demonstrate unequivocally that α -synuclein is the building block of LBs, we have used two complementary strategies. In the first, we have raised monoclonal antibodies (MAbs) to highly purified LBs and obtained a MAb specific to α -synuclein. In the second, we use light and electron microscopic immunocytochemical as well as biochemical studies to examine isolated LBs and demonstrate that full-length, partially truncated, and insoluble α -synuclein is incorporated into LBs of sporadic PD and DLB. Thus, in addition to the A53T α -synuclein mutation in familial PD, alterations in the biophysical properties of

Supported by grants from the Ministry of Health and Welfare, the Ministry of Education, Science, Culture, and Sports, and CREST of Japan Science and Technology Corp., Japan, and grants from the National Institutes of Health.

Accepted for publication January 30, 1998.

Address reprint requests to Dr. Iwatsubo, Department of Neuropathology and Neuroscience, Graduate School of Pharmaceutical Sciences, University of Tokyo, 7-3-1 Hongo Bunkyo Tokyo 113-0033, Japan. E-mail: iwatsubo@mol.f.u-tokyo.ac.jp.

Alternatively, address reprint requests to Drs. Virginia M.-Y. Lee or John Q. Trojanowski, Department of Pathology and Laboratory Medicine, University of Pennsylvania, Maloney 3rd Floor, 3600 Spruce Street, Philadelphia, PA 19104-4283. E-mail: vmylee@mail.med.upenn.edu or trojanow@mail.med.upenn.edu.

wild-type α -synuclein may play a mechanistic role in the formation of LBs and the degeneration of affected neurons in sporadic PD and DLB.

Materials and Methods

Cases

Brains were obtained at autopsy from seven patients with PD (three ethanol fixed and four formalin fixed) and nine patients with DLB (six ethanol fixed and three formalin fixed) diagnosed according to published criteria.⁵⁻⁷ Sections from midbrains were examined in all cases, and sections from cingulate or medial temporal cortices were examined in the DLB cases. Fixation of some brains in 70% ethanol with 150 mmol/L NaCl was performed as described,⁹ whereas other brains were fixed in 10% formalin. Frozen cerebral cortices from four DLB cases were used for the isolation of LBs.

Purification of LBs and Synucleins

LBs were isolated and purified by sucrose density gradient centrifugation followed by fluorescence-activated particle sorting as previously described,¹⁷ except that detergent treatment after cell sorting was omitted. Human α - and β -synuclein proteins were purified from the soluble, heat-stable fraction of homogenates of frozen human cerebral cortex as described,²²⁻²⁵ except that α - and β -synucleins were separately recovered on a DEAE-cellulose column.

Antibodies

Here, MAbs to LB immunogens were generated using $\sim 3 \times 10^6$ LBs purified from DLB cortices, and hybridoma supernatants were screened by immunostaining unfixed smears of the post-sucrose fractions of isolated LBs as described,¹⁷ except that the immunogens were disrupted by repeated ultrasonication in 0.5 ml of 50 mmol/L Tris-buffered saline (pH 7.6) without denaturation by formic acid. The specificity of the MAbs were further characterized by immunoblot analyses using a heat-stable, high-salt extractable fraction from homogenates of human brain (see below). For the production of polyclonal antibodies to α - and β -synuclein, we used synthetic synuclein peptides as immunogens, and these peptides included nonhomologous amino acid sequences in α - and β -synuclein that were well conserved in the rat and human forms of these proteins (93.8% for α -synuclein and 100% for β -synuclein). The amino termini of each of the peptides were conjugated to keyhole limpet hemocyanin via a cysteine residue for use as immunogens in rabbits to generate antisera 253 and 259 as described,²²⁻²⁵ whereas antiserum 77 was raised against purified bovine PNP14 (β -synuclein) as described.²²⁻²⁵

Immunoblot Analyses

Purified human α - and β -synuclein proteins (50 ng for MAb LB509 and antisera 77 and 259 and 100 ng for antiserum 253) were separated by sodium dodecyl sulfate polyacrylamide gel electrophoresis (SDS-PAGE) using a 13% gel, transferred to a nitrocellulose membrane, incubated with mouse MAb LB509 (culture supernatant, 1:10) or rabbit antisera 77 (1:2000), 259 (1:1500), and 253 (1:1500), respectively, and visualized by enhanced chemiluminescence as described.²²⁻²⁵ The specificity of both the MAbs and polyclonal antibodies were further assessed using a heat-stable soluble fraction (100,000 \times g) of human cingulate gyrus homogenized in 1.5 vol of a buffer containing 0.75 mol/L NaCl, 5 mmol/L MgCl₂, 5 mmol/L dithiothreitol, 0.1 mol/L 4-morpholineethanesulfonic acid, pH 7.0, and a cocktail of protease inhibitors as well as purified human α - and β -synucleins separately recovered on a DEAE-cellulose column. For immunoblot analysis of purified LBs, approximately 200,000 purified LBs were solubilized in 70% formic acid, desiccated, resolubilized in SDS sample buffer, separated by SDS-PAGE, transferred to a nitrocellulose membrane, and probed with LB509.

Immunocytochemistry and Immunoelectron Microscopy

Paraffin-embedded sections were immunostained with the anti-synuclein or anti-Ub antibodies, (diluted at 1:1000 for polyclonal antibodies to synucleins, 1:1~100 for the LB509 MAb supernatant, and 1:400 for anti-Ub antibodies) by a standard avidin-biotin complex method using 3,3'-diaminobenzidine as chromogen and lightly counterstained with hematoxylin.¹⁷ Double-label confocal microscopy with anti-tau (MAb C5, gift of Dr. Y. Ihara) and anti- α -synuclein (259) antibodies was performed as described.²⁶ Immunoelectron microscopic studies were performed using the immunoperoxidase method,¹³ and the immunogold method was used on isolated LBs.¹⁷

Results

A Monoclonal Antibody (LB509) Raised against Purified LBs Specifically Recognizes Human α -Synuclein

Among the MAbs we raised to LBs purified from DLB brains, we identified one α -synuclein-specific MAb (clone LB509) that intensely stained numerous intraneuronal LBs throughout the substantia nigra (Figure 1A) and neocortex (Figure 1B) by immunohistochemistry performed on tissue sections from the postmortem brains of sporadic PD or DLB patients. LB509 stained LBs equally well in brains fixed with 70% ethanol or 10% formalin, and it also stained many LBs in unfixed smears of these isolated LBs (Figure 1C). LB509 specifically reacted with an ~ 18 -kd polypeptide in the heat-stable soluble fraction of human cingulate gyrus

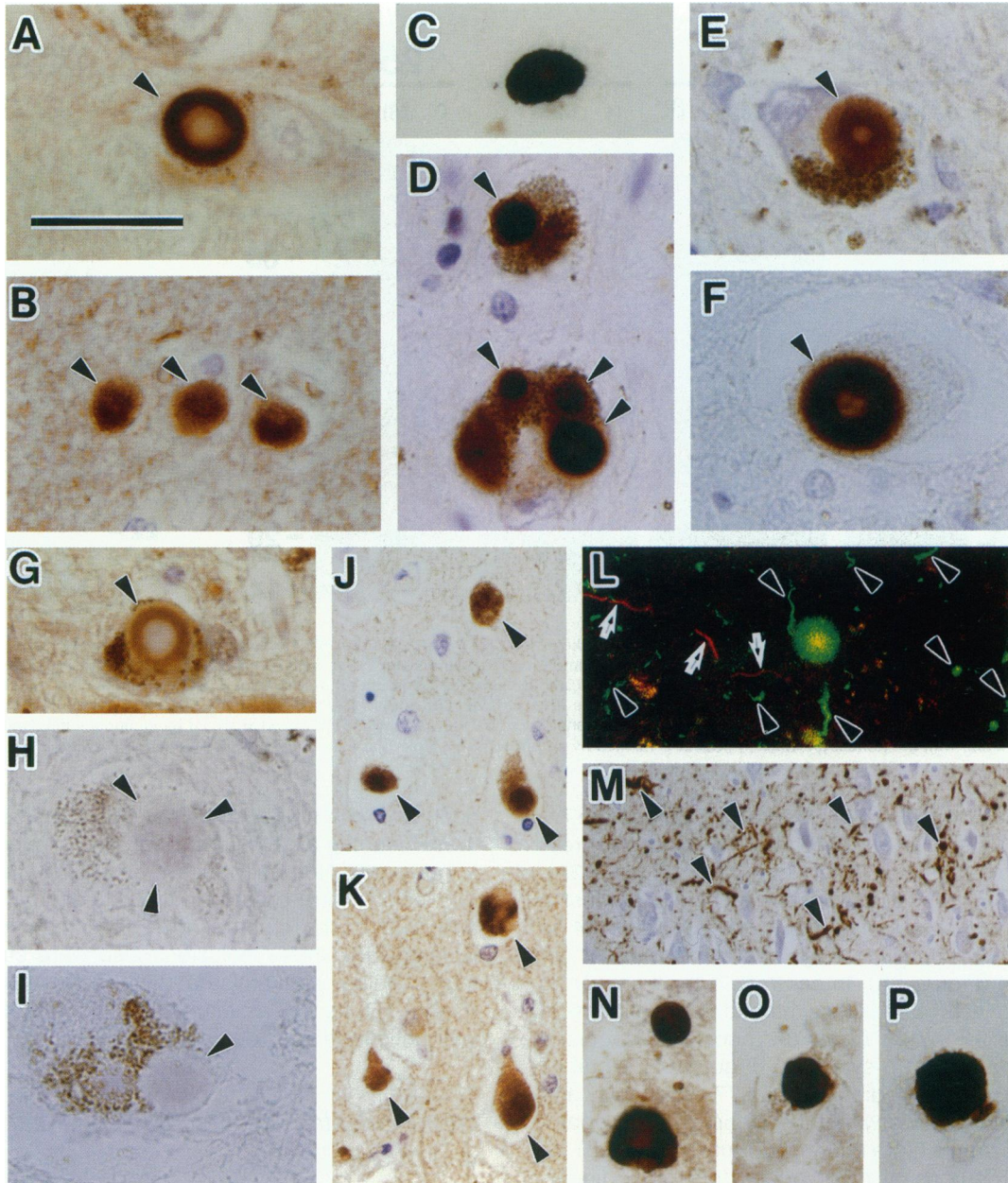


Figure 1. Light microscopic immunohistochemistry of LBs. Brainstem LBs in pigmented neurons of the substantia nigra (A, D, E, and G to I) as well as in neurons of the Edinger-Westphal nucleus (F) and LBs in neurons of the cingulate cortex (B, J, and K) are immunostained with MAb LB509 (A and B) and antisera 259 (D, F, and J) and 77 (E) as well as with anti-ubiquitin (Ub) antibodies (G and K). However, LBs are not stained by antiserum 259 after adsorption with its corresponding peptide immunogen (H) or by antiserum 253 to β -synuclein (I). **Arrowheads** indicate immunostained (A, B, D to G, J, and K) and unstained (H and I) LBs. Temporal DLB neocortex (L) double labeled with anti-tau (C5) and anti- α -synuclein antibodies (259) and the CA2/3 region of the hippocampus (M) of a DLB brain immunostained with antiserum 259 show an α -synuclein-positive LB (large round green fluorescent profile in L) as well as α -synuclein-positive abnormal neurites (green fluorescent profiles identified by arrowheads in L; brown profiles identified by **arrowheads** in M) that are distinct from tau-positive neuropil threads (red fluorescent profiles identified by **arrows** in L). Tissue fixation in B, D, and F to L was with ethanol and in A, E, G, and M with formalin. Unfixed, isolated cortical LBs were immunolabeled with MAb LB509 (C), antisera 259 (N) and 77 (O), and anti-Ub (P). Scale bar in A is equivalent to 30 μ m in A to I and N to P, 60 μ m in J to L, and 120 μ m in M.

on Western blots (see Figure 2B). This protein was shown to be α -synuclein by demonstrating that LB509 specifically reacted with purified human α -synuclein, which migrated at \sim 18 kd, but not with β -synuclein (also known as PNP14), which ran with a slightly slower mobility (Figure 2A).²²⁻²⁵

Antibodies to α -Synuclein, but Not to β -Synuclein, Immunolabel LBs

To further confirm the presence of α -synuclein in LBs, we raised antibodies to synthetic synuclein peptides or purified synuclein proteins and examined the ability of

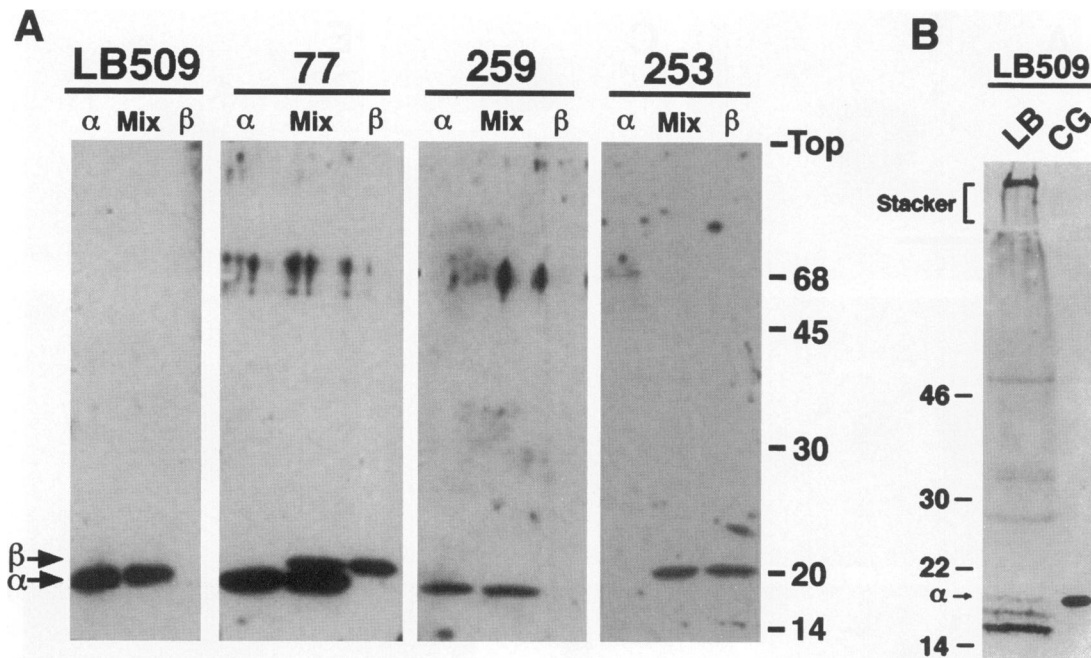


Figure 2. A: Characterization of the anti-LB and anti-synuclein antibodies. MAb LB509 and antiserum 259 specifically reacted with purified human α -synuclein migrating at ~ 18 kd, but never cross-reacted with β -synuclein. Antiserum 77 reacted with α -synuclein as well as with β -synuclein, the latter migrating at a slightly slower position compared with α -synuclein, and antiserum 253 specifically recognized β -synuclein. α , α -synuclein; β , β -synuclein, Mix, mixture of α -synuclein and β -synuclein. B: Western blot analysis of purified LBs. Purified LBs extracted with 70% formic acid (LB; left lane), together with the heat-stable, high-salt extractable fraction from a normal human cingulate gyrus (CG; right lane), were fractionated by SDS-PAGE and analyzed by immunoblotting with MAb LB509. A band co-migrating with the normal α -synuclein protein is marked by an arrow ($\alpha \rightarrow$). Molecular mass standards are shown in kilodaltons.

these antisera to stain LBs. For example, antiserum 77, which was raised to purified bovine β -synuclein, recognized both human α - and β -synucleins (Figure 2A), whereas antiserum 259, which was raised against a synthetic peptide corresponding to residues 104 to 119 of rat α -synuclein, recognized human α - but not β -synuclein (Figure 2A). In contrast, a third antiserum (253), which was raised to a synthetic peptide identical to residues 91 to 105 of rat β -synuclein, recognized only purified human β -synuclein (Figure 2A). Notably, just like LB509, antibodies 259 and 77 specifically and intensely labeled LBs within the cytoplasm of dopaminergic substantia nigra neurons (Figure 1, D and E), as well as in neurons of other nuclei (eg, the Edinger-Westphal nucleus; Figure 1F). The α -synuclein immunoreactivity in brainstem LBs was more intense than that obtained using anti-Ub antibodies (Figure 1G). Adsorption of antiserum 259 with its peptide immunogen completely abolished LB staining (Figure 1H), and the β -synuclein-specific antiserum (253) never immunolabeled LBs (Figure 1I). Antisera 259 and 77 also immunolabeled cortical LBs (Figure 1J) as strongly and frequently as anti-Ub antibodies (Figure 1K). Notably, τ -positive neurofibrillary tangles and neuropil threads in some of these sections were never labeled with the anti-synuclein antibodies in double-label confocal microscopy studies (Figure 1L). However, α -synuclein-positive neurites (which were distinct from τ -positive neuropil threads) were found in regions of DLB cortex showing severe neuronal loss and numerous LBs (Figure 1L). Although hitherto unrecognized in DLB cortex, these abnormal processes closely resembled CA2/3

neurites in the hippocampus of DLB patients,^{27,28} and these neurites also were strongly α -synuclein positive (Figure 1M). Notably, these α -synuclein-labeled neuritic lesions were present in the brains of all of the PD and DLB cases studied here. In smears of unfixed isolated LBs, these inclusions also were strongly immunolabeled with antisera 259 (Figure 1N) and 77 (Figure 1O) as well as with anti-Ub (Figure 1P), but not with antiserum 253 (data not shown).

Immunoelectron Microscopic Localization of α -Synuclein in LBs

To characterize the ultrastructural localization of α -synuclein immunoreactivity in LBs, we performed immunoelectron microscopy with antiserum 259. The peripheral portions of brainstem LBs were immunolabeled with antiserum 259 (Figure 3A), which primarily decorated filaments and associated granular material in these inclusions (Figure 3B, arrowheads). Unfixed cortical LBs also were examined by an immunogold immunoelectron microscopic technique, and the gold particles localized to amorphous material that often was associated with the filaments in LBs (Figure 3C, arrowheads).

Immunoblot Analysis of α -Synuclein in Purified LBs

To biochemically characterize the α -synuclein in LBs, we performed Western blot analyses on more highly purified,

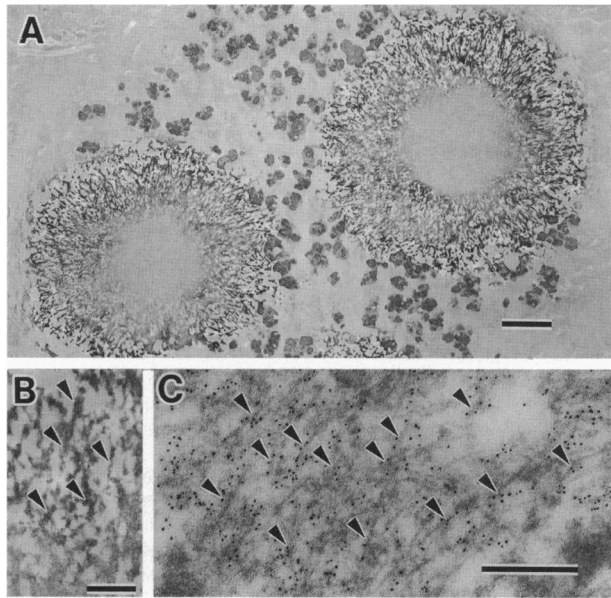


Figure 3. Immunoelectron microscopy of LBs. **A:** Two brainstem LBs immunolabeled with antiserum 259 and visualized by the immunoperoxidase method. **B:** A high-power view of the periphery of a LB in **A**. **C:** Immunogold labeling of an unfixed, isolated cortical LB with antiserum 259. **Arrows in B and C** indicate α -synuclein immunoreactivity associated with LB filaments. Scale bars, 2 μ m (**A**), 500 nm (**B**), and 200 nm (**C**).

formic-acid-treated LBs isolated from DLB cortex (Figure 2B). LB509 labeled an immunoband with a molecular weight similar to normal human α -synuclein (Figure 2B, arrow), as well as 14- to 16-kd immunobands (Figure 2B), consistent with partially truncated forms of α -synuclein. Additionally, several other immunostained bands migrating at 25 to 50 kd as well as higher molecular weight α -synuclein-immunoreactive aggregates, and labeled material that did not enter the stacking gel, also were detected by LB509 (Figure 2B). Similar protein bands also were detected in Western blots of isolated LBs probed with antiserum 259 (data not shown).

Discussion

Taken together, the data presented here show that α -synuclein is an integral component of both brainstem and cortical LBs in patients with sporadic LB disorders. Our findings significantly extended previously published light microscopic observations²¹ by 1) raising a MAbs against purified LBs that specifically recognized α -synuclein, 2) demonstrating α -synuclein in LBs stained with α -synuclein-specific antibodies at the light and ultra-structural level, and 3) detecting full-length and altered α -synuclein in highly purified LBs by Western blots. In the brainstem LBs, the immunoreactions for α -synuclein were predominantly observed in the peripheral portion; however, it remains possible that the core portions of brainstem LBs contain some α -synuclein because the high density of LB cores often prevents the penetration of antibodies into this region.²⁹ Notably, our biochemical analysis showed that full-length and partially truncated forms of α -synuclein, as well as high molecular weight

aggregates, are present in LBs recovered from the insoluble fraction of DLB brains, although the possibility that some of the truncation occurred postmortem during the purification of LBs cannot be completely excluded. These data suggest that the mechanisms leading to the selective incorporation of α -synuclein into LBs probably involve alterations in the metabolism of this molecule that render it insoluble and prone to aggregate. Indeed, we have recently obtained preliminary data suggesting that there is a shift of α -synuclein from a soluble to an insoluble pool in the cortex of DLB brains (P.-H. Tu, M. Baba, T. Iwatsubo, J. Q. Trojanowski and V. M.-Y. Lee, unpublished observation). Thus, wild-type α -synuclein probably plays a role in the pathogenesis of sporadic PD and DLB, whereas a mutation in the α -synuclein gene in familial PD results in an A53T substitution in α -synuclein that may augment this process.

Although the significance of this selective deposition of α -synuclein in LBs is unclear, α -synuclein is normally transported to presynaptic termini^{18,19} where it is thought to play a role in learning or neuronal plasticity.³⁰ Furthermore, α -synuclein is thought to lack significant secondary structure, but it may interact with other proteins.³¹⁻³⁴ Thus, a mutation in α -synuclein in familial PD, or the aberrant interaction of altered wild-type α -synuclein with other axonal proteins (eg, neurofilament subunits) in sporadic PD or DLB may lead to the precipitation of α -synuclein with other proteins in filamentous, insoluble aggregates that become ubiquitinated and form LBs in these disorders. The long-term consequences of these aggregates could be the disruption of neuronal functions leading to the death of affected neurons. Furthermore, mutant human α -synuclein with the A53T substitution identified in familial PD is expected to acquire a higher propensity to self-aggregate, or to lose its ability to interact normally with other proteins,³¹ and this could augment the pathological processes outlined above. These speculations notwithstanding, the present data strongly argue that additional investigation into the role of α -synuclein in LB formation should facilitate understanding of the pathogenesis and biological significance of LBs in PD and DLB, as well as the development of effective therapeutic strategies for these common, yet devastating neurodegenerative disorders.

Acknowledgments

We thank Drs. D.W. Dickson and D.M.A. Mann for providing some of the frozen DLB brain tissues used in this study and Ms. S. Leight for providing invaluable assistance with the production of LB509.

References

1. Fahn S: Parkinsonism. Merritt's Textbook of Neurology, ed 9. Edited by Rowland LP. Baltimore, Williams & Wilkins, 1995, pp 713-730
2. Lewy FH: Paralysis Agitans. I. Pathologische Anatomie. In *Handbuch der Neurologie*. Edited by M. Lewandowski Berlin, Springer, 1912, pp 920-933
3. Forno LS: Neuropathology of Parkinson's disease. *J Neuropathol Exp Neurol* 1996, 55:259-272

4. Pollanen MS, Dickson DW, Bergeron C: Pathology and biology of the Lewy body. *J Neuropathol Exp Neurol* 1993, 52:183-191
5. Dickson DW, Davies P, Mayeux R, Crystal H, Horoupian DS, Thompson A, Goldman JE: Diffuse Lewy body disease: neuropathological and biochemical studies of six patients. *Acta Neuropathol* 1987, 75:8-15
6. Trojanowski JQ, Schmidt ML, Shin RW, Bramblett GT, Rao D, Lee VM-Y: Altered tau and neurofilament proteins in neurodegenerative diseases: diagnostic implications for Alzheimer's and Lewy body dementias. *Brain Pathol* 1993, 3:45-54
7. McKeith IG, Galasko D, Kosaka K, Perry EK, Dickson DW, Hansen LA, Salmon DP, Lowe J, Mirra SS, Byrne EJ, Lennox G, Quinn NP, Edwardson JA, Ince PG, Bergeron C, Burns A, Miller BL, Lovestone S, Collerton D, Jansen EN, Ballard C, de Vos RA, Wilcock GK, Jellinger KA, Perry RH: Consensus guidelines for the clinical and pathologic diagnosis of dementia with Lewy bodies (DLB): report of the Consortium on DLB International Workshop. *Neurology* 1996, 47:1113-1124
8. Goldman JE, Yen S-H, Chiu F-C, Peress NS: Lewy bodies of Parkinson's disease contain neurofilament antigens. *Science* 1983, 221:1082-1084
9. Schmidt ML, Murray J, Lee VM-Y, Hill WD, Wertkin A, Trojanowski JQ: Epitope map of neurofilament protein domains on cortical and peripheral nervous system Lewy bodies. *Am J Pathol* 1991, 139:53-65
10. Pollanen MS, Bergeron C, Weyer L: Detergent-insoluble cortical Lewy body fibrils share epitopes with neurofilament and tau. *J Neurochem* 1992, 58:1953-1956
11. Pollanen MS, Bergeron C, Weyer L: Deposition of detergent-resistant neurofilaments into Lewy body fibrils. *Brain Res* 1993, 603:121-124
12. Pollanen MS, Bergeron C, Weyer L: Characterization of a shared epitope in cortical Lewy body fibrils and Alzheimer paired helical filaments. *Acta Neuropathol* 1994, 88:1-6
13. Kuzuhara S, Mori H, Izumiyama N, Yoshimura M, Ihara Y: Lewy bodies are ubiquitinated: a light and electron microscopic immunocytochemical study. *Acta Neuropathol* 1988, 75:345-353
14. Galloway PG, Grundke-Iqbal I, Iqbal K, Perry G: Lewy bodies contain epitopes both shared and distinct from Alzheimer neurofibrillary tangles. *J Neuropathol Exp Neurol* 1988, 47:654-663
15. Love S, Saitoh T, Quijada S, Cole GM, Terry RD: Alz-50, ubiquitin and tau immunoreactivity of neurofibrillary tangles, Pick bodies and Lewy bodies. *J Neuropathol Exp Neurol* 1988, 47:393-405
16. Manetto V, Perry G, Tabaton M, Mulvihill P, Fried VA, Smith HT, Gambetti P, Autilio-Gambetti L: Ubiquitin is associated with abnormal cytoplasmic filaments characteristic of neurodegenerative diseases. *Proc Natl Acad Sci USA* 1988, 85:4501-4505
17. Iwatsubo T, Yamaguchi H, Fujimuro M, Yokosawa H, Ihara Y, Trojanowski JQ, Lee VM-Y: Purification and characterization of Lewy bodies from the brains of patients with diffuse Lewy body disease. *Am J Pathol* 1996, 148:1517-1529
18. Jakes R, Spillantini MG, Goedert M: Identification of two distinct synucleins from human brain. *FEBS Lett* 1994, 345:27-32
19. Iwai A, Masliah E, Yoshimoto M, Ge N, Flanagan L, de Silva HA, Kittel A, Saitoh T: The precursor protein of non-A β component of Alzheimer's disease amyloid is a presynaptic protein of the central nervous system. *Neuron* 1995, 14:467-475
20. Polymeropoulos MH, Lavedan C, Leroy E, Ide SE, Dehejia A, Dutra A, Pike B, Root H, Rubenstein J, Boyer R, Stenroos ES, Chandrasekharappa S, Athanassiadou A, Papapetropoulos T, Johnson WG, Lazzarini AM, Duvoisin RC, Di Iorio G, Golbe LI, Nussbaum RL: Mutation in the α -synuclein gene identified in families with Parkinson's disease. *Science* 1997, 276:2045-2047
21. Spillantini MG, Schmidt ML, Lee VM-Y, Trojanowski JQ, Jakes R, Goedert M: α -Synuclein in Lewy bodies. *Nature* 1997, 388:839-840
22. Nakajo S, Omata K, Aiuchi T, Shibayama T, Okahashi I, Ochiai H, Nakai Y, Nakaya K, Nakamura Y: Purification and characterization of a novel brain-specific 14-kd protein. *J Neurochem* 1990, 55:2031-2038
23. Nakajo S, Tsukada K, Omata K, Nakamura Y, Nakaya K: A new brain-specific 14-kd protein is a phosphoprotein: its complete amino acid sequence and evidence for phosphorylation. *Eur J Biochem* 1993, 217:1057-1063
24. Shibayama-Imazu T, Okahashi I, Omata K, Nakajo S, Ochiai H, Nakai Y, Hama T, Nakamura Y, Nakaya K: Cell and tissue distribution and developmental change of neuron specific 14 kd protein (phosphoneuroprotein 14). *Brain Res* 1993, 622:17-25
25. Nakajo S, Tsukada K, Kameyama H, Furuyama Y, Nakaya K: Distribution of phosphoneuroprotein 14 (PNP 14) in vertebrates: its levels as determined by enzyme immunoassay. *Brain Res* 1996, 741:180-184
26. Iwatsubo T, Hasegawa M, Esaki Y, Ihara Y: Lack of ubiquitin immunoreactivities at both ends of neuropil threads: possible bidirectional growth of neuropil threads. *Am J Pathol* 1992, 140:277-282
27. Dickson DW, Ruan D, Crystal H, Mark MH, Davies P, Kress Y, Yen S-H: Hippocampal degeneration differentiates diffuse Lewy body disease (DLBD) from Alzheimer's disease: light and electron microscopic immunocytochemistry of CA2-3 neurites specific to DLBD. *Neurology* 1991, 41:1402-1409
28. Dickson DW, Schmidt ML, Lee VM-Y, Zhao ML, Yen S-H, Trojanowski JQ: Immunoreactivity profile of hippocampal CA2/3 neurites in diffuse Lewy body disease. *Acta Neuropathol* 1994, 87:269-276
29. Galloway PG, Mulvihill O, Perry G: Filaments of Lewy bodies contain insoluble cytoskeletal elements. *Am J Pathol* 1992, 140:809-822
30. George JM, Jin H, Woods WS, Clayton DF: Characterization of a novel protein regulated during the critical period for song learning in the zebra finch. *Neuron* 1995, 15:361-372
31. Goedert M: Familial Parkinson's disease: the awakening of α -synuclein. *Nature* 1997, 388:232-233
32. Jensen PH, Hojrup P, Hager H, Nielsen MS, Jacobsen L, Olesen OF, Gliemann J, Jakes R: Binding of A β to α - and β -synucleins: identification of segments in α -synuclein/NAC precursor that bind A β and NAC. *Biochem J* 1997, 32:539-546
33. Yoshimoto M, Iwai A, Kang D, Otero DA, Xia Y, Saitoh T: NACP, the precursor protein of the non-amyloid β /A4 protein (A β) component of Alzheimer disease amyloid, binds A β , and stimulates A β aggregation. *Proc Natl Acad Sci USA* 1995, 92:9141-9145
34. Weinreb PH, Zhen W, Poon AW, Conway KA, Lansbury PT Jr: NACP, a protein implicated in Alzheimer's disease and learning, is natively unfolded. *Biochemistry* 1996, 35:13709-13715