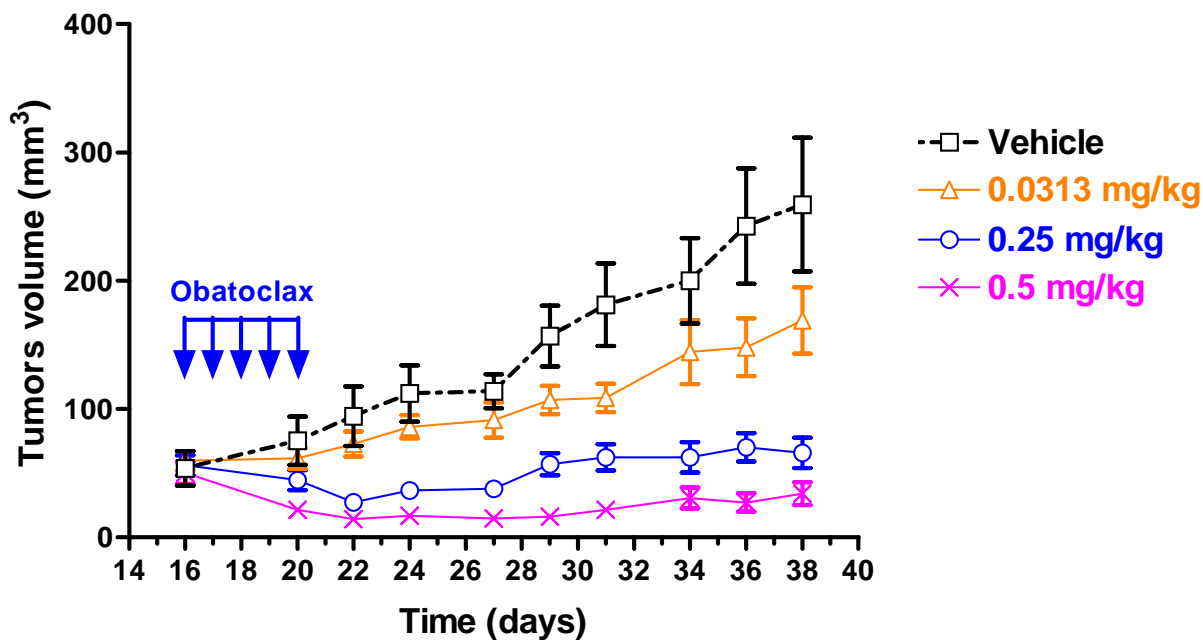


**A****B**

Tumor Cells	Mouse Strain	Treatment				
		Drug	Dose (mg/kg)	Death	Weight Change	T/C
Cervical carcinoma (C33A)	CB17 SCID/SCID	Cisplatin	3.5	0/10	-18%	38%
		Obatoclox	2	0/10	7%	11%
Prostate carcinoma (PC3)	CB17 SCID/SCID	Cisplatin	3.5	2/10	-18%	15%
		Obatoclox	2	0/10	10%	28%
Colon Carcinoma (SW480)	CB17 SCID/SCID	Cisplatin	3.5	2/10	-23%	75%
		Obatoclox	2	0/10	3%	35%
Mammary carcinoma (4T1)	Balb/c regular	Cisplatin	3.5	0/10	-1%	55%
		Obatoclox	2	0/10	1%	42%