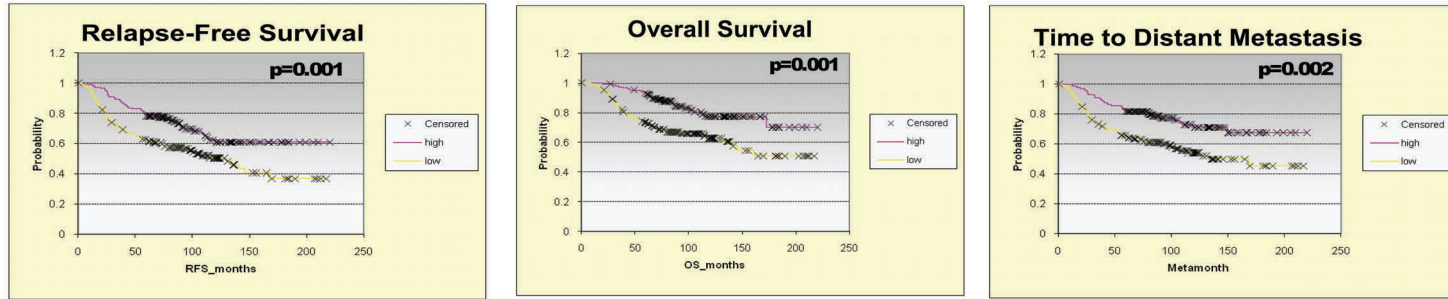


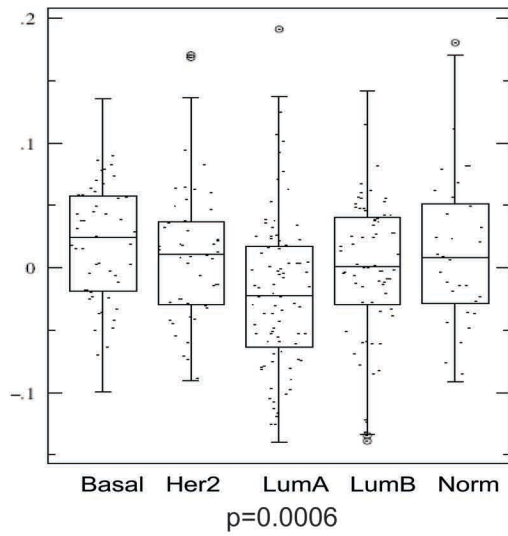
Lung Metastasis Gene List in NKI295
(*van't Veer et al. Nature.2002 415:530-6*)

A.

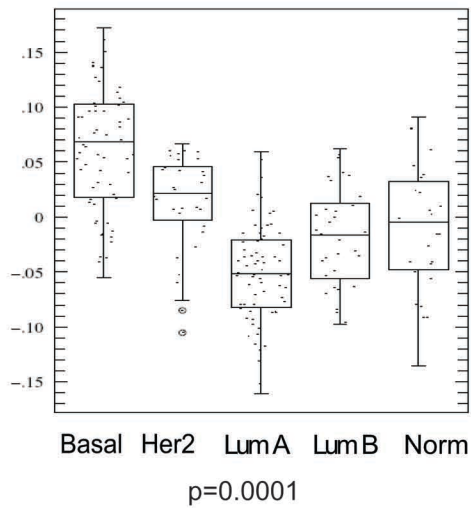


B.

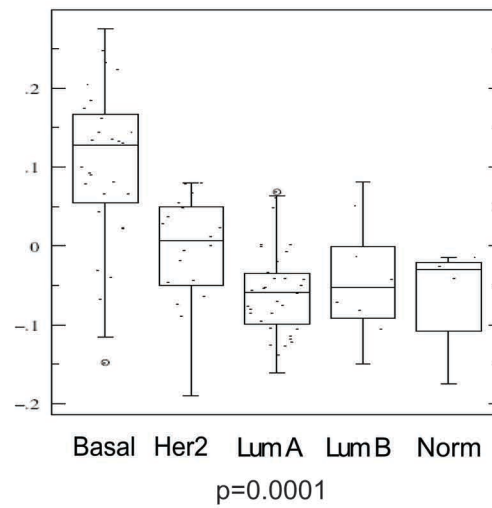
WNT Signature Gene List in NKI295
(*van't Veer et al. Nature.2002 415:530-6*)



WNT Signature Gene List in UNC 232
(*Herschkowitz et al. Genome Biol.2007 8(5):R76.*)

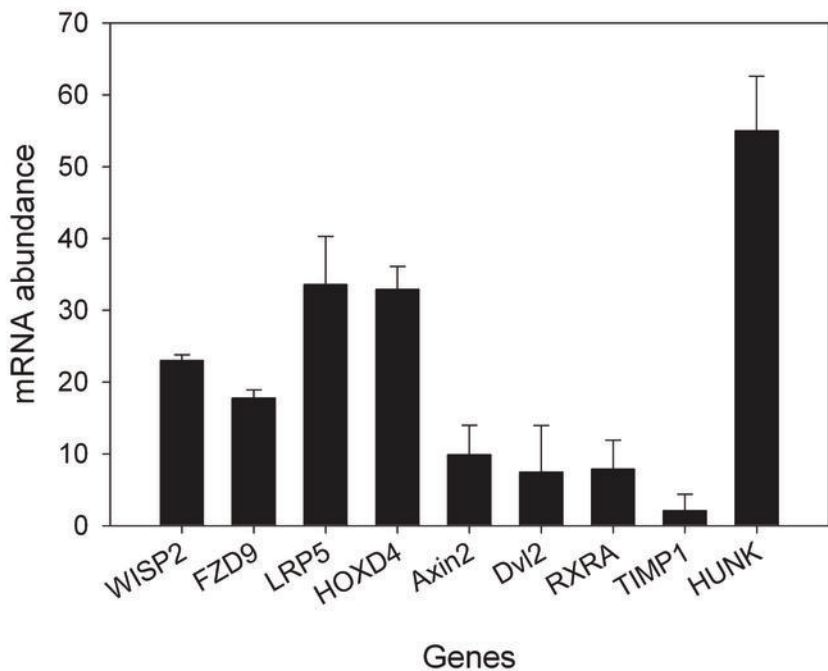


WNT Signature Gene List in UNC 12
(*Hu et al. BMC Genomics 2006 Apr 27;7:96.*)

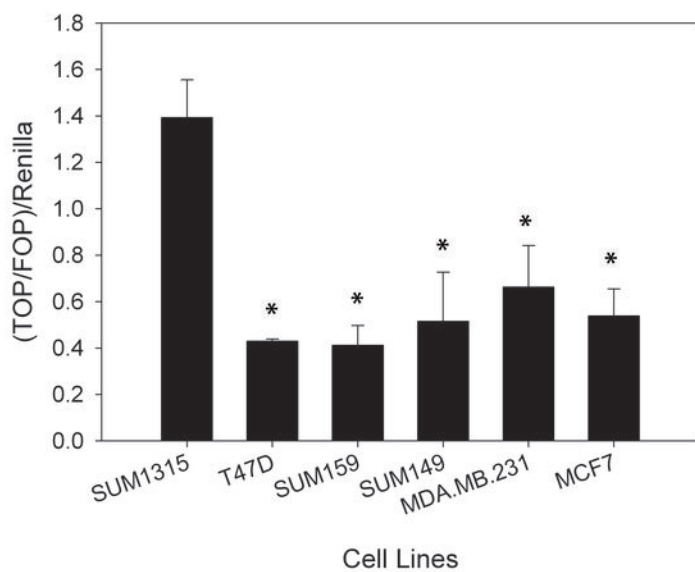


Supplemental Figure 2: Validation of Wnt genes and activity from microarray

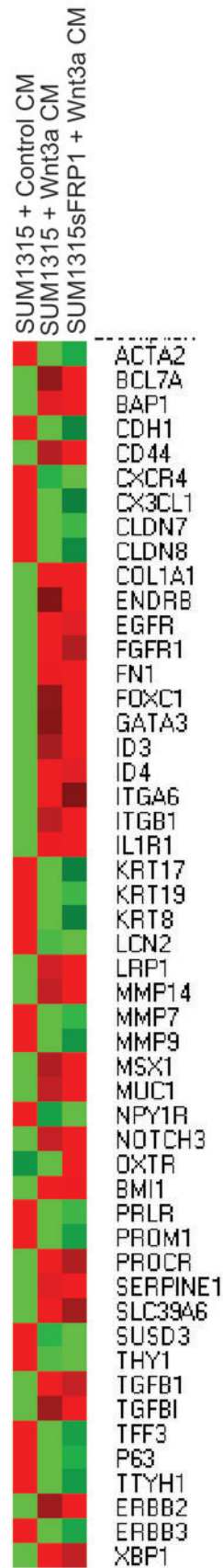
A

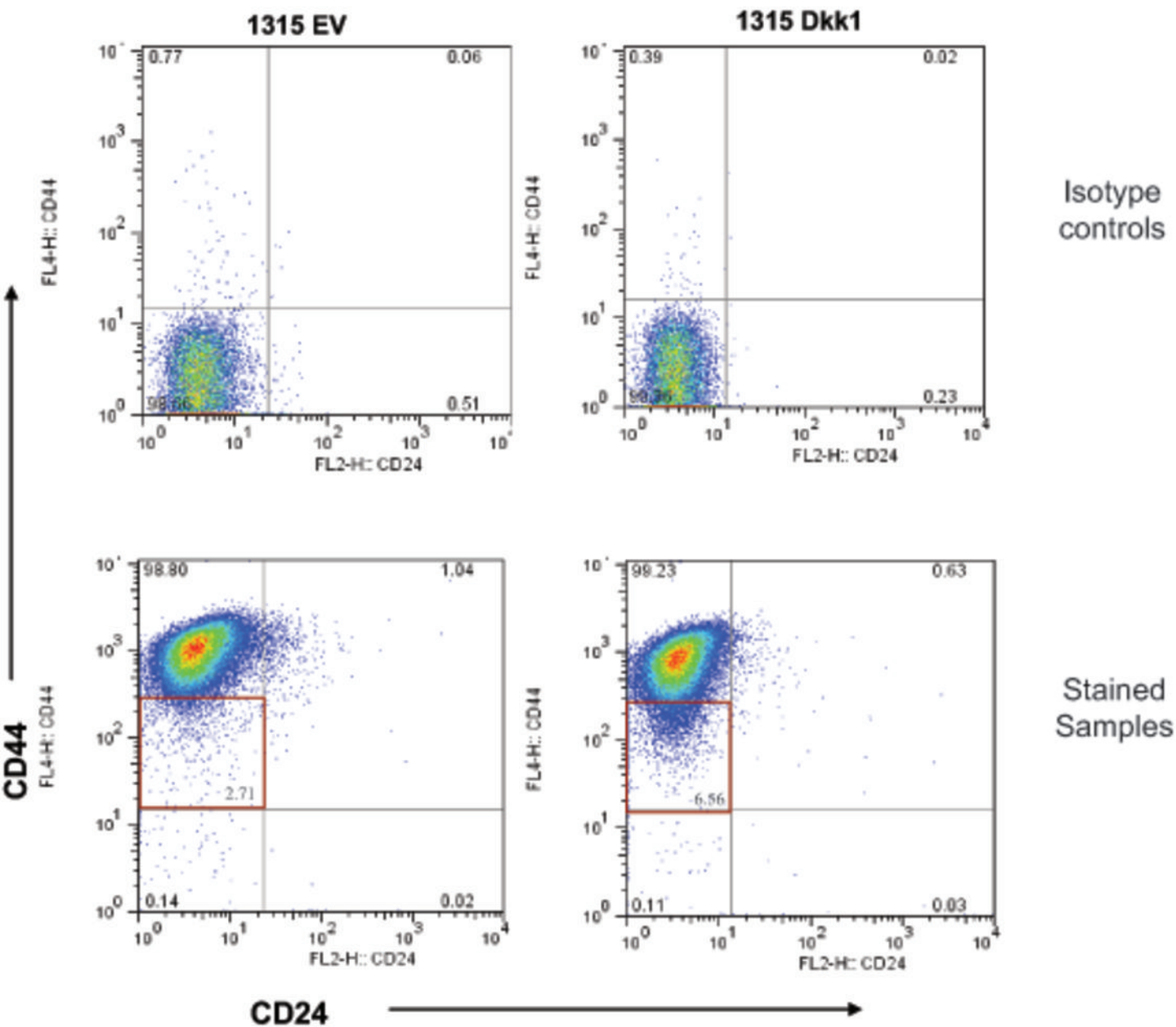


B



Supplemental Figure 4





Supplementary Table 1: Microarray Data

GenBank ID	T-Test	Lung Normal Fold Change		Gene Name	Description
NM_000558	7.22E-08	7.13E+00	7.13E+00	HBA1	Hemoglobin, alpha 1
NM_000429	1.50E-07	5.83E+00	5.83E+00	MAT1A	Methionine adenosyltransferase I, alpha
D25266	3.98E-06	5.00E+00	5.00E+00		HUMRES413 Homo sapiens cDNA
NM_004181	3.95E-06	4.86E+00	4.86E+00	UCHL1	Ubiquitin carboxyl-terminal esterase L1 (ubiquitin thiolesterase)
NM_031219	3.61E-06	4.73E+00	4.73E+00	MGC12904	Hypothetical protein MGC12904
NM_018670	2.57E-07	4.70E+00	4.70E+00	IR1899308	mesoderm posterior 1 homolog (mouse)
NM_032982	0.00168	4.557	4.557	CASP2	Caspase 2, apoptosis-related cysteine protease
NM_000900	2.74E-06	4.47E+00	4.47E+00	MGP	Matrix Gla protein
NM_000542	1.86E-06	4.29E+00	4.29E+00	SFTPB	Surfactant, pulmonary-associated protein B
NM_003083	5.25E-07	4.26E+00	4.26E+00	SNAPC2	Small nuclear RNA activating complex, polypeptide 2, 45kD
NM_002072	2.28E-06	4.14E+00	4.14E+00	GNAQ	Guanine nucleotide binding protein (G protein), q polypeptide
AK055576	5.06E-07	4.11E+00	4.11E+00	MPN	Marapsin
NM_005786	7.68E-06	4.09E+00	4.09E+00	SDCCAG33	Serologically defined colon cancer antigen 33
NM_003759	0.00382	4.038	4.038	SLC4A4	Solute carrier family 4, sodium bicarbonate cotransporter, member 4
NM_001215	6.92E-06	4.02E+00	4.02E+00	CA6	Carbonic anhydrase VI
NM_030570	1.96E-07	3.93E+00	3.93E+00	MGC10902	uroplakin 3b
L17326	3.35E-07	3.88E+00	3.88E+00	1F6	1f6 protein
AB051550	0.00682	3.733	3.733	KIAA1763	contactin associated protein like 4
AF401315	6.58E-08	3.66E+00	3.66E+00	KCTD13	Homo sapiens polymerase delta-interacting protein 1 mRNA,
AK025774	5.38E-05	3.65E+00	3.65E+00	VPS35	Vacuolar protein sorting 35 (yeast)
NM_012162	3.04E-07	3.50E+00	3.50E+00	FBXL6	F-box and leucine-rich repeat protein 6
NM_001424	2.58E-06	3.49E+00	3.49E+00	EMP2	Epithelial membrane protein 2
NM_001008	0.000433	3.464	3.464	RPS4Y	Ribosomal protein S4, Y-linked
NM_001454	0.00162	3.373	3.373	FOXJ1	Forkhead box J1
NM_021226	3.02E-06	3.33E+00	3.33E+00	LOC58504	rho gtpase activating protein 22
U38654	3.03E-06	3.27E+00	3.27E+00	RAB27A	RAB27A, member RAS oncogene family
NM_000239	2.80E-06	3.27E+00	3.27E+00	LYZ	Lysozyme (renal amyloidosis)
NM_025203	1.78E-06	3.27E+00	3.27E+00	FLJ21945	Hypothetical protein FLJ21945
NM_033506	2.91E-07	3.21E+00	3.21E+00	FBXO24	F-box only protein 24
BC013885	2.55E-05	3.14E+00	3.14E+00	EPB41L1	erythrocyte membrane protein band 4.1-like 1
AL162069	0.0188	3.121	3.121	LOC144501	hypothetical protein loc144501
NM_025217	5.67E-07	3.12E+00	3.12E+00	ULBP2	UL16 binding protein 2
AJ007557	2.06E-05	3.11E+00	3.11E+00	KCNJ13	Potassium inwardly-rectifying channel, subfamily J, member 13
NM_017980	1.36E-05	3.04E+00	3.04E+00	FLJ10044	lim and senescent cell antigen-like domains 2

NM_021944	0.00415	2.972	2.972 FLJ12154	Hypothetical protein FLJ12154
NM_024712	3.86E-06	2.97E+00	2.97E+00 ELMO3	Engulfment and cell motility 3 (ced-12 homolog, <i>C. elegans</i>)
BC016979	9.02E-05	2.95E+00	2.95E+00 LOC54550	Hypothetical protein
NM_001136	5.82E-07	2.94E+00	2.94E+00 AGER	Advanced glycosylation end product-specific receptor
NM_000366	0.001	2.848	2.848 TPM1	Tropomyosin 1 (alpha)
AW841753	0.00209	2.836	2.836	zymogen granule protein 16
NM_004863	0.00169	2.836	2.836 SPTLC2	Serine palmitoyltransferase, long chain base subunit 2
BE961032	1.71E-05	2.80E+00	2.80E+00 COX6A1	Human DNA sequence from BAC 15E1 on chromosome 12.
NM_003874	1.83E-05	2.75E+00	2.75E+00 CD84	CD84 antigen (leukocyte antigen)
NM_016579	4.17E-05	2.73E+00	2.73E+00 8D6A	8D6 antigen
AK001143	0.000223	2.718	2.718 LOC220906	Homo sapiens cDNA FLJ10281 fis, clone HEMBB1001289
NM_000177	7.32E-05	2.70E+00	2.70E+00 GSN	Gelsolin (amyloidosis, Finnish type)
AK021542	0.0002	2.671	2.671	fij41170 protein
NM_001888	0.00319	2.622	2.622 CRYM	Crystallin, mu
NM_001900	6.72E-05	2.61E+00	2.61E+00 CST5	Cystatin D
AK024465	2.35E-06	2.59E+00	2.59E+00 FLJ00058	guanine nucleotide binding protein (g protein), gamma 7
AK027362	0.00168	2.571	2.571 FLJ20727	ubiquitin specific peptidase 47
U92980	0.000241	2.568	2.568 DT1P1A10	Hypothetical protein DT1P1A10
NM_001216	5.51E-06	2.56E+00	2.56E+00 CA9	Carbonic anhydrase IX
NM_016369	4.17E-05	2.55E+00	2.55E+00 CLDN18	Claudin 18
AB067498	0.000305	2.536	2.536 KIAA1911	establishment of cohesin 1 homolog 1 (<i>s.cerevisiae</i>)
NM_003926	2.16E-05	2.52E+00	2.52E+00 MBD3	Methyl-CpG binding domain protein 3
AB040976	5.76E-05	2.52E+00	2.52E+00 KIAA1543	KIAA1543 protein
M80899	0.000239	2.514	2.514 AHNAK	AHNAK nucleoprotein (desmoyokin)
AB014574	9.88E-05	2.50E+00	2.50E+00 KIAA0674	KIAA0674 protein
AK055309	0.019	2.499	2.499 ZNF285	zinc finger protein 285
NM_017986	0.00544	2.449	2.449 FLJ10060	g protein-coupled receptor 172b
NM_033158	0.000163	2.415	2.415 HYAL2	Hyaluronoglucosaminidase 2
NM_014291	0.000624	2.408	2.408 GCAT	Glycine C-acetyltransferase (2-amino-3-ketobutyrate coenzyme A ligase)
AK055994	0.0482	2.404	2.404 FLJ25084	skin aspartic protease
NM_002307	3.92E-05	2.39E+00	2.39E+00 LGALS7	Lectin, galactoside-binding, soluble, 7 (galectin 7)
AB033048	0.000223	2.371	2.371 PPP1R9A	Protein phosphatase 1, regulatory (inhibitor) subunit 9A
AK027598	1.84E-05	2.36E+00	2.36E+00 ATP10D	ATPase, Class V, type 10D
NM_000190	5.59E-06	2.35E+00	2.35E+00 HMBS	Hydroxymethylbilane synthase
AB038651	3.64E-05	2.35E+00	2.35E+00 LOC57106	K562 cell-derived leucine-zipper-like protein 1
NM_015994	6.72E-05	2.33E+00	2.33E+00 ATP6M	ATPase, H ⁺ transporting, lysosomal (vacuolar proton pump)
AB051558	0.00662	2.317	2.317 KIAA1771	dedicator of cytokinesis 7

AK057870	2.20E-05	2.31E+00	2.31E+00	WBSCR16	williams-beuren syndrome chromosome region 16
NM_014564	1.51E-05	2.31E+00	2.31E+00	LHX3	LIM homeobox protein 3
NM_053049	0.000833	2.305	2.305	SPC	Stresscopin
NM_002758	0.0122	2.301	2.301	MAP2K6	Mitogen-activated protein kinase kinase 6
NM_003417	0.0205	2.284	2.284	ZNF264	Zinc finger protein 264
NM_014427	0.00683	2.274	2.274	CPNE7	Copine VII
NM_005556	0.00941	2.269	2.269	KRT7	Keratin 7
NM_002957	0.0136	2.26	2.26	RXRA	Retinoid X receptor, alpha
AK025225	1.15E-05	2.25E+00	2.25E+00		neuronal guanine nucleotide exchange factor
NM_000484	2.39E-05	2.23E+00	2.23E+00	APP	Amyloid beta (A4) precursor protein (protease nexin-II, Alzheimer disease)
AB037745	0.000123	2.217	2.217	KIAA1324	KIAA1324 protein
AB067524	7.57E-05	2.22E+00	2.22E+00	KIAA1937	forkhead-associated (fha) phosphopeptide binding domain 1
NM_003791	0.000717	2.164	2.164	MBTPS1	Membrane-bound transcription factor protease, site 1
AB046822	0.0285	2.161	2.161	KIAA1602	KIAA1602 protein
NM_006987	0.00264	2.148	2.148	RPH3AL	Rabphilin 3A-like (without C2 domains)
NM_001687	2.77E-05	2.15E+00	2.15E+00	ATP5D	ATP synthase, H ⁺ transporting, mitochondrial F1 complex, delta subunit
Y10520	2.96E-05	2.14E+00	2.14E+00	HLA-C	H.sapiens mRNA for HLA-C alpha chain (Cw*1701)
AB051470	0.00439	2.132	2.132	KIAA1683	KIAA1683 protein
NM_018106	0.000972	2.125	2.125	FLJ10479	zinc finger, dhhc-type containing 4
NM_006713	0.0148	2.121	2.121	PC4	Activated RNA polymerase II transcription cofactor 4
L21934	0.00485	2.117	2.117	SOAT1	Sterol O-acyltransferase (acyl-Coenzyme A: cholesterol acyltransferase) 1
NM_032995	0.000142	2.109	2.109	ARHGEF4	Rho guanine nucleotide exchange factor (GEF) 4
BC007537	0.00146	2.096	2.096	CSRP2BP	CSRP2 binding protein
BC017280	0.0315	2.096	2.096	TTS-2.2	Transport-secretion protein 2.2,
NM_005539	1.80E-05	2.09E+00	2.09E+00	INPP5A	Inositol polyphosphate-5-phosphatase, 40kD
AF352051	5.94E-05	2.09E+00	2.09E+00	RBBP6	Retinoblastoma binding protein 6
NM_016370	0.0208	2.084	2.084	RAB9L	RAB9-like protein
AF116682	0.0014	2.083	2.083	PRO2013	Hypothetical protein PRO2013
NM_020995	0.000182	2.081	2.081	HPR	Haptoglobin-related protein
NM_005712	4.00E-05	2.07E+00	2.07E+00	HHLA1	HERV-H LTR-associating 1
NM_019056	0.00473	2.052	2.052	P17.3	Neuronal protein 17.3
NM_004684	0.000194	2.048	2.048	SPARCL1	SPARC-like 1 (mast9, hevin)
BC007899	5.80E-05	2.05E+00	2.05E+00	LOC148898	Homo sapiens, clone IMAGE:4298026, mRNA, partial cds
AK058044	0.000873	2.032	2.032	C14orf50	Homo sapiens cDNA FLJ25315 fis, clone TST00114
L13283	0.00295	2.031	2.031	MUC7	mucin 7, salivary
NM_013230	0.00129	2.025	2.025	CD24	CD24 antigen (small cell lung carcinoma cluster 4 antigen)
NM_019103	0.0409	2.019	2.019	LOC55954	zinc finger, matrin type 5

AB011116	0.00919	2.01	2.01 KIAA0544	mahuginin, ring finger 1
AF020089	6.60E-05	2.01E+00	2.01E+00 STK29	Serine/threonine kinase 29
BC015858	1.85E-05	2.00E+00	2.00E+00 ZNF37A	Zinc finger protein 37a (KOX 21)
NM_000355	0.00195	2.003	2.003 TCN2	Transcobalamin II; macrocytic anemia
NM_005296	0.0166	1.997	1.997 GPR23	G protein-coupled receptor 23
NM_004381	0.015	1.984	1.984 CREBL1	CAMP responsive element binding protein-like 1
AY014272	0.0271	1.971	1.971 FKSG30	actin-like protein
AJ005866	0.00201	1.968	1.968 SQV7L	Nucleotide-sugar transporter similar to <i>C. elegans</i> sqv-7
AK056006	0.0205	1.967	1.967 LOC148206	zinc finger protein 714
NM_000274	0.000347	1.962	1.962 OAT	Ornithine aminotransferase (gyrate atrophy)
NM_030813	0.00906	1.957	1.957 SKD3	Suppressor of potassium transport defect 3
NM_006453	0.0037	1.952	1.952 TBL3	Transducin (beta)-like 3
AK056173	0.000999	1.941	1.941 FLJ38753	kelch domain containing 7a
NM_024675	0.0394	1.94	1.94 FLJ21816	hypothetical protein flj21816
AK002044	0.0239	1.938	1.938 SLC39A3	solute carrier family 39 (zinc transporter), member 3
AK054728	0.0109	1.924	1.924 CALCB	Calcitonin-related polypeptide, beta
AL390158	6.46E-05	1.92E+00	1.92E+00 DKFZp761G2	ataxin 7-like 3
NM_001678	0.00977	1.923	1.923 ATP1B2	ATPase, Na ⁺ /K ⁺ transporting, beta 2 polypeptide
NM_003355	0.00408	1.916	1.916 UCP2	Uncoupling protein 2 (mitochondrial, proton carrier)
NM_013392	0.000384	1.914	1.914 NRBP	Nuclear receptor binding protein
NM_022343	0.00126	1.913	1.913 LOC64148	17kD fetal brain protein
NM_000883	0.0384	1.901	1.901 IMPDH1	IMP (inosine monophosphate) dehydrogenase 1
NM_001037	0.00809	1.896	1.896 SCN1B	Sodium channel, voltage-gated, type I, beta polypeptide
NM_006650	0.00482	1.895	1.895 CPLX2	Complexin 2
AK054643	0.00617	1.888	1.888 MGC45873	sterile alpha motif domain containing 11
NM_024123	0.0199	1.887	1.887 G6E	Putative Ly-6 superfamily member
NM_015959	0.00151	1.882	1.882 LOC51075	CGI-31 protein
AK001064	0.00264	1.881	1.881 DKFZp434P0	Homo sapiens cDNA FLJ10202 fis, clone HEMBA1004929
AF161369	0.00967	1.875	1.875	bromodomain containing 4
AK057708	0.00709	1.87	1.87 NLVCF	Nuclear localization signal deleted in velocardiofacial syndrome
NM_006842	0.0202	1.867	1.867 SF3B2	Splicing factor 3b, subunit 2, 145kD
NM_015658	0.00252	1.852	1.852 DKFZP564C1	nucleolar complex associated 2 homolog (<i>s. cerevisiae</i>)
NM_006925	5.19E-05	1.85E+00	1.85E+00 SFRS5	Splicing factor, arginine/serine-rich 5
NM_001176	0.00567	1.848	1.848 ARHGDI3	Rho GDP dissociation inhibitor (GDI) gamma
NM_006851	0.0204	1.836	1.836 RTVP1	Glioma pathogenesis-related protein
NM_012385	0.00167	1.835	1.835 P8	P8 protein (candidate of metastasis 1)
NM_001134	0.00146	1.821	1.821 AFP	Alpha-fetoprotein

NM_005607	0.00157	1.819	1.819	PTK2	PTK2 protein tyrosine kinase 2
NM_024893	0.00444	1.817	1.817	C20orf39	chromosome 20 open reading frame 39
AK025348	0.00122	1.811	1.811	THRAP2	thyroid hormone receptor associated protein 2
NM_004847	0.00176	1.811	1.811	AIF1	Allograft inflammatory factor 1
NM_006875	0.00688	1.808	1.808	PIM2	Pim-2 oncogene
NM_002147	0.00455	1.807	1.807	HOXB5	Homeo box B5
AK023855	0.00226	1.806	1.806		paired box gene 8
NM_005969	0.00599	1.8	1.8	NAP1L4	Nucleosome assembly protein 1-like 4
AF268897	0.00143	1.795	1.795	KCNC2; KV3.	Homo sapiens voltage gated potassium channel Kv3.2a mRNA,
AK001603	0.0143	1.795	1.795	GTPBP5	GTP binding protein 5 (putative)
BC016964	0.0264	1.795	1.795	MGC21621	Homo sapiens, clone MGC:21621 IMAGE:4181577, mRNA,
NM_023076	0.00262	1.79	1.79	FLJ23360	Hypothetical protein FLJ23360
NM_014178	0.0495	1.782	1.782	HSPC156	syntaxin binding protein 6 (amisyn)
NM_018983	0.00225	1.779	1.779	NOLA1	Nucleolar protein family A, member 1 (H/ACA small nucleolar RNPs)
NM_021818	0.0112	1.775	1.775	WW45	WW Domain-Containing Gene
NM_025107	0.0159	1.768	1.768	FLJ21269	myc target 1
NM_003881	0.0172	1.767	1.767	WISP2	WNT1 inducible signaling pathway protein 2
NM_033343	9.94E-05	1.77E+00	1.77E+00	LHX4	LIM homeobox protein 4
NM_002537	0.0215	1.765	1.765	OAZ2	Ornithine decarboxylase antizyme 2
NM_014369	0.000361	1.762	1.762	PTPN18	Protein tyrosine phosphatase, non-receptor type 18 (brain-derived)
NM_004239	0.0213	1.76	1.76	TRIP11	Thyroid hormone receptor interactor 11
AK054637	0.00415	1.752	1.752	LOC149773	Homo sapiens cDNA FLJ30075 fis, clone BGGI11000285
NM_031211	0.00199	1.749	1.749	LAT1-3TM	LAT1-3TM protein
NM_001311	0.0139	1.747	1.747	ENSG000001	CYSTEINE-RICH PROTEIN 1 (CYSTEINE-RICH INTESTINAL PROTEIN) (CRIP)
NM_017606	0.00812	1.745	1.745	DKFZp434K1	Hypothetical protein DKFZp434K1210
NM_153255	0.0453	1.74	1.74	ENSG000001	DNA REPLICATION LICENSING FACTOR
NM_032483	0.0424	1.737	1.737	HTPAP	HTPAP protein
AB058739	0.000796	1.734	1.734	KIAA1836	KIAA1836 protein
NM_019018	0.00098	1.733	1.733	FLJ11127	family with sequence similarity 105, member a
NM_030930	0.00246	1.73	1.73	UNC93B1	Unc-93 homolog B1 (C. elegans)
NM_002488	0.0487	1.728	1.728	NDUFA2	NADH dehydrogenase (ubiquinone) 1 alpha subcomplex, 2 (8kD, B8)
NM_014935	0.0115	1.716	1.716	PEPP3	Phosphoinositol 3-phosphate-binding protein-2
AB037764	0.0045	1.712	1.712	FLJ10876	rest corepressor 3
AF332229	0.00859	1.708	1.708	GOLGA2LY	Golgi autoantigen golgin subfamily a2-like
NM_052858	0.00731	1.708	1.708	LOC91862	Similar to RIKEN cDNA 1810006A16 gene
NM_001909	0.000775	1.706	1.706	CTSD	Cathepsin D (lysosomal aspartyl protease)
NM_003144	0.00608	1.705	1.705	SSR1	Signal sequence receptor, alpha (translocon-associated protein alpha)

AK056832	0.0123	1.7	1.7	vacuolar protein sorting 53 (yeast)
NM_001927	0.0151	1.7	1.7 DES	Desmin
AB046771	0.00115	1.699	1.699 FLJ10652	Homo sapiens mRNA for KIAA1551 protein, partial cds
AL080151	0.0202	1.699	1.699 LOC196993	Homo sapiens mRNA; cDNA DKFZp434D024 (from clone DKFZp434D024)
NM_031919	0.00421	1.696	1.696 CSDUFD1	Cystatin and DUF19 domain containing 1
NM_007007	0.00818	1.695	1.695 CPSF6	Cleavage and polyadenylation specific factor 6, 68kD subunit
NM_080426	0.000611	1.695	1.695 ENSG000001	GUANINE NUCLEOTIDE-BINDING PROTEIN G(S), ALPHA SUBUNIT
NM_024297	0.0233	1.694	1.694 MGC2941	phd finger protein 23
NM_016108	0.00124	1.686	1.686 AIG-1	Androgen induced protein
AL050090	0.00147	1.683	1.683 DKFZP586F1	myosin viia and rab interacting protein
AK027222	0.0049	1.681	1.681 A1BG	Alpha-1-B glycoprotein
NM_024768	0.0469	1.676	1.676 FLJ12057	coiled-coil domain containing 48
AB007932	0.00143	1.668	1.668 PLXNA2	Plexin A2
NM_004938	0.0347	1.668	1.668 DAPK1	Death-associated protein kinase 1
NM_014654	0.019	1.664	1.664 SDC3	Syndecan 3 (N-syndecan)
NM_024578	0.00624	1.664	1.664 FLJ22709	hypothetical protein flj22709
NM_005728	0.0226	1.663	1.663 ENDOGL2	Endonuclease G-like 2
NM_032593	0.000548	1.663	1.663 HIT-17	PKCI-1-related HIT protein
NM_021242	0.000444	1.659	1.659 STRAIT11499	mid1 interacting protein 1 (gastrulation specific g12-like (zebrafish))
NM_015646	0.00648	1.658	1.658 RAP1B	RAP1B, member of RAS oncogene family
NM_000830	0.00276	1.653	1.653 GRIK1	Glutamate receptor, ionotropic, kainate 1
NM_001651	0.00761	1.652	1.652 AQP5	Aquaporin 5
AK056680	0.000219	1.651	1.651	similar to myosin regulatory light chain-like
NM_005491	0.0193	1.649	1.649 CXorf6	Chromosome X open reading frame 6
AB051478	0.00813	1.648	1.648 KIAA1691	tweety homolog 3 (drosophila)
NM_001120	0.0127	1.648	1.648 TETRAN	Tetracycline transporter-like protein
AB002364	0.0473	1.642	1.642 ADAMTS3	A disintegrin-like and metalloprotease (reprolysin type) with thrombospondin
NM_006639	0.0247	1.641	1.641 CYSLT1	Cysteinyl leukotriene receptor 1
NM_014578	0.0104	1.641	1.641 ARHD	Ras homolog gene family, member D
D87011	0.00348	1.638	1.638 3'OY11.1	suppressor of hairy wing homolog 1 (drosophila)
NM_001769	0.000484	1.637	1.637 CD9	CD9 antigen (p24)
AB033036	0.015	1.635	1.635 KIAA1210	KIAA1210 protein
NM_080753	0.00487	1.633	1.633 ENSG000001	PUTATIVE PROTEASE INHIBITOR WAP10 PRECURSOR.
NM_080818	0.000564	1.631	1.631 ENSG000001	G PROTEIN-COUPLED RECEPTOR 80; G PROTEIN-COUPLED RECEPTOR
NM_007102	0.0252	1.628	1.628 GUCA2B	Guanylate cyclase activator 2B (uroguanylin)
AK057888	0.0025	1.627	1.627 LOC286090	Homo sapiens cDNA FLJ25159 fis, clone CBR08036
NM_003001	0.045	1.622	1.622 SDHC	Succinate dehydrogenase complex, subunit C, integral membrane protein,

AF435925	0.0328	1.621	1.621 VLGR1	Very large G protein-coupled receptor 1
NM_012326	0.000267	1.621	1.621 MAPRE3	Microtubule-associated protein, RP/EB family, member 3
NM_014030	0.0239	1.62	1.62 GIT1	G protein-coupled receptor kinase-interactor 1
NM_033030	0.0159	1.618	1.618 BOLL	Bol, boule-like (Drosophila)
NM_001287	0.00134	1.616	1.616 CLCN7	Chloride channel 7
AB014520	0.000651	1.611	1.611 KIAA0620	plexin d1
NM_022371	0.0323	1.61	1.61 ADIR	ATP-dependant interferon responsive
NM_024949	0.0254	1.61	1.61 FLJ22029	ww, c2 and coiled-coil domain containing 2
AB053316	0.00111	1.609	1.609 ALS2CR15	amyotrophic lateral sclerosis 2 (juvenile) c'some region, candidate 14
NM_005935	0.00283	1.609	1.609 MLLT2	Myeloid/lymphoid or mixed-lineage leukemia (trithorax homolog, Drosophila)
AK024332	0.00128	1.608	1.608 PDE7A	phosphodiesterase 7a
BC012899	0.00599	1.608	1.608 NEU4	sialidase 4
NM_015396	0.00164	1.607	1.607 DKFZP434A0	armadillo repeat containing 8
X83412	0.0484	1.605	1.605 HAB1	B1 for mucin
NM_004555	0.00343	1.604	1.604 NFATC3	Nuclear factor of activated T-cells, cytoplasmic, calcineurin-dependent 3
NM_152437	0.0445	1.599	1.599 ENSG000001	ZINC FINGER
NM_005199	0.0157	1.598	1.598 CHRNG	Cholinergic receptor, nicotinic, gamma polypeptide
NM_002937	0.00757	1.597	1.597 RNASE4	Ribonuclease, RNase A family, 4
NM_014446	0.0195	1.596	1.596 MIBP	Muscle-specific beta 1 integrin binding protein
NM_022034	0.0195	1.596	1.596 ERG-1	Estrogen regulated gene 1
NM_003508	0.0015	1.595	1.595 FZD9	Frizzled homolog 9 (Drosophila)
AL137262	0.00643	1.593	1.593 TNIP2	tnfaip3 interacting protein 2
BC014111	0.021	1.593	1.593 LOC115704	ecotropic viral integration site 5-like
AF293337	0.00911	1.591	1.591 NBC4	Sodium bicarbonate transporter 4
AC008050	0.0277	1.589	1.589	estrogen related receptor beta
NM_000020	0.0161	1.589	1.589 ACVRL1	Activin A receptor type II-like 1
NM_005283	0.0133	1.589	1.589 CCXCR1	Chemokine (C motif) XC receptor 1
NM_006764	0.00112	1.589	1.589 IFRD2	Interferon-related developmental regulator 2
NM_032854	0.000133	1.589	1.589 FLJ14871	Hypothetical protein FLJ14871
NM_003712	0.000346	1.588	1.588 PPAP2C	Phosphatidic acid phosphatase type 2C
AK025174	0.00328	1.586	1.586 GSDML	gasdermin-like
NM_032261	0.0343	1.584	1.584 DKFZp434N0	Hypothetical protein DKFZp434N0650
AL049337	0.0176	1.583	1.583	sry (sex determining region y)-box 5
BC009447	0.0198	1.581	1.581 MGC15887	Homo sapiens, clone MGC:15887 IMAGE:3530481, mRNA, complete cds
AL137589	0.0408	1.574	1.574 DKFZP434K0	f-box and leucine-rich repeat protein 19
AF249277	0.0119	1.573	1.573 LOC283687	Homo sapiens cervical cancer suppressor-1 mRNA, complete cds
NM_024888	0.0266	1.572	1.572 FLJ11535	plasticity-related gene 2

NM_003820	0.0165	1.569	1.569 TNFRSF14	Tumor necrosis factor receptor superfamily, member 14 (herpesvirus entry i
AL030997	0.00225	1.568	1.568	spanx-n3 protein
AL109674	0.0073	1.568	1.568 RASGRF1	ras protein-specific guanine nucleotide-releasing factor 1
AK024937	0.0389	1.567	1.567	smad specific e3 ubiquitin protein ligase 1
X52015	0.00154	1.567	1.567 IL1RN	Interleukin 1 receptor antagonist
AB040893	0.0203	1.565	1.565 KIAA1460	trinucleotide repeat containing 6a
NM_001267	0.0092	1.565	1.565 CHAD	Chondroadherin
NM_004073	0.00283	1.565	1.565 CNK	Cytokine-inducible kinase
NM_007210	0.0235	1.565	1.565 GALNT6	UDP-N-acetyl-alpha-D-galactosamine:polypeptide N-acetylgalactosaminyltr
NM_032374	0.00123	1.565	1.565 MGC2562	Hypothetical protein MGC2562
AB051514	0.00238	1.564	1.564 KIAA1727	KIAA1727 protein
NM_012093	0.000891	1.564	1.564 AK5	Adenylate kinase 5
NM_012268	0.00776	1.564	1.564 HU-K4	Similar to vaccinia virus HindIII K4L ORF
AL121916	0.00363	1.563	1.563	ribosomal protein l7a-like 2
NM_000774	0.00989	1.563	1.563 CYP2F1	Cytochrome P450, subfamily IIF, polypeptide 1
NM_006271	0.0422	1.563	1.563 S100A1	S100 calcium binding protein A1
NM_002292	0.00765	1.562	1.562 LAMB2	Laminin, beta 2 (laminin S)
NM_004923	0.0266	1.559	1.559 MTL5	Metallothionein-like 5, testis-specific (tesmin)
BC010012	0.0211	1.558	1.558 WBP1	WW domain binding protein 1
NM_022124	0.000797	1.556	1.556 CDH23	Cadherin related 23
AF217994	0.00632	1.553	1.553 OPLAH	5-oxoprolinase (ATP-hydrolysing)
NM_032756	0.00312	1.553	1.553 MGC15668	glyoxalase domain containing 1
NM_004375	0.0315	1.552	1.552 COX11	COX11 homolog, cytochrome c oxidase assembly protein (yeast)
NM_014586	0.0351	1.551	1.551 HUNK	Hormonally upregulated Neu-associated kinase
BC015210	0.0331	1.55	1.55 LOC132200	chromosome 3 open reading frame 49
AK057627	0.00111	1.548	1.548	Homo sapiens cDNA FLJ33065 fis, clone TRACH2000081
NM_017600	0.00129	1.545	1.545 DKFZp434MC	golgi autoantigen, golgin subfamily a, 2-like 1
BC001233	0.00322	1.544	1.544 KIAA0092	centrosomal protein 57kda
NM_022060	0.00668	1.543	1.543 FLJ12816	abhydrolase domain containing 4
AK055367	0.00689	1.542	1.542 MGC9912	Similar to RIKEN cDNA 4930578F06 gene
NM_014033	0.0208	1.542	1.542 DKFZP586A0	methyltransferase like 7a
NM_004327	0.0369	1.541	1.541 BCR	Breakpoint cluster region
AK024422	0.0109	1.539	1.539 FLJ23209	pdz domain containing 7
NM_007326	0.000702	1.539	1.539 DIA1	Diaphorase (NADH) (cytochrome b-5 reductase)
NM_015670	0.00108	1.537	1.537 SENP3	Sentrin/SUMO-specific protease 3
NM_033194	0.00724	1.536	1.536 HspB9	Small heat shock protein B9
AL133573	0.00535	1.535	1.535 RHBDL4	rhomboid, veinlet-like 3 (drosophila)

NM_014715	0.0322	1.534	1.534 KIAA0712	rho gtpase-activating protein
AK054774	0.011	1.532	1.532	t-cell lymphoma breakpoint associated target 1
AL162053	0.0487	1.532	1.532 FBXO3	f-box protein 3
NM_000404	0.0204	1.532	1.532 GLB1	Galactosidase, beta 1
BC010637	0.00231	1.531	1.531 C20orf64	tp53 regulating kinase
NM_023918	0.0477	1.531	1.531 TAS2R8	Taste receptor, type 2, member 8
AK026759	0.000482	1.529	1.529 LOC143188	Homo sapiens cDNA: FLJ23106 fis, clone LNG07680
Z37994	0.0412	1.528	1.528 CTNNA1	Catenin (cadherin-associated protein), alpha pseudogene 1
NM_032823	0.00175	1.526	1.526 FLJ14675	Hypothetical protein FLJ14675
AK023824	0.0105	1.525	1.525 KIAA0809	rad54-like 2 (s. cerevisiae)
NM_002860	0.0497	1.525	1.525 PYCS	Pyrroline-5-carboxylate synthetase (glutamate gamma-semialdehyde synthase)
NM_005438	0.0132	1.525	1.525 FOSL1	FOS-like antigen 1
NM_003510	0.0283	1.524	1.524 H2AFD	H2A histone family, member D
AB051520	0.0105	1.523	1.523 KIAA1733	KIAA1733 protein
NM_012373	0.0359	1.523	1.523 OR3A3	Olfactory receptor, family 3, subfamily A, member 3
AB023210	0.0095	1.521	1.521 KIAA0993	wd repeat and fyve domain containing 3
NM_006426	0.0239	1.521	1.521 DPYSL4	Dihydropyrimidinase-like 4
NM_005679	0.0172	1.52	1.52 TAF1C	TATA box binding protein (TBP)-associated factor, RNA polymerase I, C, 1
NM_032412	0.0188	1.519	1.519 ORF1-FL49	Putative nuclear protein ORF1-FL49
AB028978	0.0332	1.518	1.518 KIAA1055	tbc1 domain family member 2b
NM_003614	0.0395	1.517	1.517 GALR3	Galanin receptor 3
NM_004122	0.0226	1.517	1.517 GHSR	Growth hormone secretagogue receptor
NM_017429	0.0234	1.514	1.514 BCDO	Beta-carotene 15, 15'-dioxygenase
NM_052887	0.0138	1.513	1.513 TIRAP	Toll-interleukin 1 receptor (TIR) domain-containing adapter protein
NM_021728	0.0332	1.511	1.511 OTX2	Orthodenticle homolog 2 (Drosophila)
NM_021934	0.0393	1.511	1.511 FLJ11773	Hypothetical protein FLJ11773
AK055711	0.0014	1.51	1.51 SFXN2	sideroflexin 2
AK022110	0.0196	1.509	1.509	nudix (nucleoside diphosphate linked moiety x)-type motif 4
AB014562	0.0228	1.505	1.505 KIAA0662	phd finger protein 2
NM_052961	0.0131	1.505	1.505 SLC26A8	Solute carrier family 26, member 8
AK027242, NM_000772	0.0134	1.504	1.504	amyloid beta (a4) precursor protein (peptidase nexin-ii, alzheimer disease)
NM_000772	0.00836	1.503	1.503 CYP2C18	Cytochrome P450, subfamily IIC (mephenytoin 4-hydroxylase), polypeptide
NM_016564	0.0104	1.5	1.5 BM88	BM88 antigen
NM_006336	0.0313	1.499	1.499 ZYG	ZYG homolog
NM_021977	0.0344	1.498	1.498 SLC22A3	Solute carrier family 22 (extraneuronal monoamine transporter), member 3
AB011157	0.0183	1.497	1.497 KIAA0585	Phosphatidylserine receptor
AK023825	0.049	1.497	1.497 C21orf91	Chromosome 21 open reading frame 91

NM_012319	0.0221	1.497	1.497 LIV-1	LIV-1 protein, estrogen regulated
BC004925	0.0422	1.496	1.496 GPRC5C	g protein-coupled receptor, family c, group 5, member c
NM_002046	0.00151	1.496	1.496 GAPD	Glyceraldehyde-3-phosphate dehydrogenase
NM_016645	0.00332	1.496	1.496 NEUGRIN	Mesenchymal stem cell protein DSC92
NM_022897	0.037	1.494	1.494 RANBP17	RAN binding protein 17
NM_003433	0.0265	1.493	1.493 ZNF132	Zinc finger protein 132 (clone pHZ-12)
NM_006076	0.00224	1.491	1.491 RAB-R	Rev/Rex activation domain binding protein-related
AB058781	0.0499	1.49	1.49 KIAA1878	microtubule associated protein 6
NM_145263	0.0171	1.489	1.489 ENSG000001	LOC132671. [Source:RefSeq;Acc:NM_145263]
AK025636	0.00271	1.488	1.488 ANKRD15	ankyrin repeat domain 15
AK056154	0.0224	1.488	1.488	Homo sapiens cDNA FLJ31592 fis, clone NT2RI2002447
NM_030974	0.0148	1.488	1.488 DKFZP434N1	shank-associated rh domain interactor
BC000085	0.00908	1.484	1.484 RPS15	Ribosomal protein S15
NM_006302	0.0377	1.483	1.483 GCS1	Glucosidase I
AK000782	0.0471	1.482	1.482 ARGBP2	sorbin and sh3 domain containing 2
NM_000835	0.00277	1.48	1.48 GRIN2C	Glutamate receptor, ionotropic, N-methyl D-aspartate 2C
Y11142	0.00895	1.48	1.48 EAN57	Hypothetical protein
AK056859	0.0312	1.478	1.478 RAR2A	SOCS box containing protein RAR2A
NM_001306	0.00708	1.478	1.478 CLDN3	Claudin 3
NM_024085	0.00148	1.478	1.478 FLJ22169	atg9 autophagy related 9 homolog a (s. cerevisiae)
NM_033118	0.0027	1.477	1.477 MYLK2	Myosin light chain kinase 2, skeletal muscle
NM_024758	0.0311	1.476	1.476 FLJ23384	Agmatinase
AK025181	0.0214	1.475	1.475 LOC91464	rax-like homeobox
NM_014356	0.00489	1.475	1.475 HGC6.2	HGC6.2 protein
AL050137	0.0313	1.474	1.474 DKFZP586L1	olfactomedin-like 2b
AF229803	0.0169	1.473	1.473	Homo sapiens endozepine-like protein type 1 mutant mRNA, complete cds
NM_001749	0.0168	1.472	1.472 CAPNS1	Calpain, small subunit 1
AK054814	0.0378	1.471	1.471 MEIS3	Meis1, myeloid ecotropic viral integration site 1 homolog 3 (mouse)
NM_001273	0.0128	1.47	1.47 CHD4	Chromodomain helicase DNA binding protein 4
NM_032410	0.0242	1.469	1.469 HOOK3	Hook3 protein
NM_006458	0.0201	1.467	1.467 TRIM3	Tripartite motif-containing 3
NM_004455	0.00298	1.466	1.466 EXTL1	Exostoses (multiple)-like 1
AK026710	0.0391	1.465	1.465 KIAA1228	family with sequence similarity 62 (c2 domain containing) member b
NM_002541	0.0104	1.465	1.465 OGDH	Oxoglutarate (alpha-ketoglutarate) dehydrogenase (lipoamide)
NM_004031	0.0173	1.465	1.465 IRF7	Interferon regulatory factor 7
AK057278	0.00121	1.462	1.462 CNTN4	Contactin 4
NM_001255	0.000991	1.46	1.46 CDC20	CDC20 cell division cycle 20 homolog (S. cerevisiae)

NM_005828	0.0138	1.459	1.459 HAN11	WD-repeat protein
NM_022836	0.0018	1.459	1.459 DCLRE1B	DNA cross-link repair 1B (PSO2 homolog, <i>S. cerevisiae</i>)
AB046833	0.0215	1.458	1.458 KIAA1613	solute carrier family 7 (cationic amino acid transporter, y+ system, member
NM_032039	0.0122	1.458	1.458 DKFZP761DC	chromosome 16 open reading frame 9
NM_000237	0.0226	1.457	1.457 LPL	Lipoprotein lipase
NM_014021	0.00451	1.457	1.457 KIAA0923	KIAA0923 protein
NM_024095	0.0423	1.457	1.457 MGC5540	ankyrin repeat and socs box-containing 8
AK055229	0.00997	1.456	1.456 GPR12	g protein-coupled receptor 12
NM_001760	0.00539	1.456	1.456 CCND3	Cyclin D3
NM_004433	0.02	1.456	1.456 ELF3	E74-like factor 3 (ets domain transcription factor, epithelial-specific)
AK024492	0.0121	1.455	1.455 MGC2555	zinc finger protein 503
BE884686	0.00522	1.454	1.454 LTB4DH	ESTs, Highly similar to LB4D_HUMAN NADP-DEPENDENT LEUKOTRIEN
NM_004315	0.00821	1.454	1.454 ASAH	N-acylsphingosine amidohydrolase (acid ceramidase)
NM_022740	0.0277	1.453	1.453 HIPK2	Homeodomain interacting protein kinase 2
NM_005154	0.0344	1.45	1.45 USP8	Ubiquitin specific protease 8
NM_018447	0.00829	1.45	1.45 LOC55831	30 kDa protein
NM_053043	0.00146	1.448	1.448 MGC20460	proline rich 8
AK025953	0.0426	1.447	1.447	myosin, light polypeptide kinase
NM_012122	0.034	1.444	1.444 CES3	Carboxylesterase 3 (brain)
BE379813	0.00157	1.443	1.443 LOC55864	Uncharacterized gastric protein YC11P
AK021608	0.0253	1.441	1.441 FLJ22405	chromosome 3 open reading frame 29
BC008248	0.0239	1.441	1.441	Homo sapiens, clone IMAGE:3874689, mRNA, partial cds
NM_004229	0.0165	1.441	1.441 CRSP2	Cofactor required for Sp1 transcriptional activation, subunit 2 (150kD)
NM_020657	0.00299	1.441	1.441 ZNF304	Zinc finger protein 304
NM_014977	0.000566	1.44	1.44 KIAA0670	apoptotic chromatin condensation inducer 1
NM_018373	0.0365	1.44	1.44 FLJ11271	synaptojanin 2 binding protein
NM_024779	0.0029	1.44	1.44 FLJ22055	phosphatidylinositol-4-phosphate 5-kinase, type ii, gamma
NM_032507	0.0437	1.439	1.439 HUCEP-4	Cerebral protein-4
NM_021081	0.0372	1.438	1.438 GHRH	Growth hormone releasing hormone
AF234255	0.0327	1.437	1.437 IGLJ3	Homo sapiens clone KM36 immunoglobulin light chain variable region mRN
NM_003019	0.0102	1.437	1.437 SFTPD	Surfactant, pulmonary-associated protein D
AK026652	0.00662	1.436	1.436 hPAD-colony	Peptidylarginine deiminase type I
BC011864	0.00878	1.436	1.436 MYCL1	v-myc myelocytomatosis viral oncogene homolog 1, lung carcinoma derivec
NM_005471	0.0457	1.436	1.436 GNPI	Glucosamine-6-phosphate isomerase
NM_032346	0.00463	1.435	1.435 MGC13096	Hypothetical protein MGC13096
U53442	0.0309	1.434	1.434 MAPK11	Mitogen-activated protein kinase 11
AK055312	0.00237	1.432	1.432 STRN4	striatin, calmodulin binding protein 4

AB033066	0.0407	1.431	1.431 KIAA1240	KIAA1240 protein
AB069698	0.00571	1.431	1.431 ADAMTS13	A disintegrin-like and metalloprotease (reprolysin type) with thrombospondin
NM_032566	0.00492	1.431	1.431 ECG2	Esophagus cancer-related gene-2
BC010642	0.00306	1.43	1.43 ZNF22	Zinc finger protein 22 (KOX 15)
NM_001501	0.0116	1.429	1.429 GNRH2	Gonadotropin-releasing hormone 2
NM_006195	0.0115	1.427	1.427 PBX3	Pre-B-cell leukemia transcription factor 3
AB046773	0.00149	1.426	1.426 KIAA1553	KIAA1553 protein
AK000803	0.0487	1.426	1.426 LOC90624	Homo sapiens cDNA FLJ20796 fis, clone COL00301
BC011693	0.0135	1.425	1.425 LOC169611	olfactomedin-like 2a
NM_020147	0.00174	1.425	1.425 LOC56906	thap domain containing 10
AK000795	0.0177	1.424	1.424	phosphodiesterase 3a, cgmp-inhibited
AK057021	0.0094	1.424	1.424 MGC5139	Hypothetical protein MGC5139
AL353933	0.0116	1.424	1.424 DKFZp761G0	solute carrier family 22 (organic cation transporter), member 15
NM_031897	0.0073	1.424	1.424 CACNG6	Calcium channel, voltage-dependent, gamma subunit 6
AF333077	0.00189	1.423	1.423 FKSG39	Homo sapiens FKSG39 (FKSG39) mRNA, complete cds
NM_001415	0.0186	1.423	1.423 EIF2S3	Eukaryotic translation initiation factor 2, subunit 3 (gamma, 52kD)
NM_014009	0.00136	1.422	1.422 IPEX	Immune dysregulation, polyendocrinopathy, enteropathy, X-linked
NM_022338	0.00964	1.422	1.422 C11orf24	Chromosome 11 open reading frame 24
NM_019089	0.0277	1.421	1.421 HES2	Hairy and enhancer of split (Drosophila) homolog 2
AK054580	0.00611	1.42	1.42 FBXW2	f-box and wd-40 domain protein 2
AK056666	0.0412	1.42	1.42 ZNF488	zinc finger protein 488
NM_006865	0.0057	1.42	1.42 LILRA3	Leukocyte immunoglobulin-like receptor, subfamily A (without TM domain),
NM_030936	0.0126	1.42	1.42 DKFZP434C1	Hypothetical protein DKFZp434C135
NM_002861	0.0152	1.419	1.419 PCYT2	Phosphate cytidyltransferase 2, ethanolamine
NM_020179	0.0278	1.419	1.419 FN5	FN5 protein
NM_022471	0.0229	1.419	1.419 FLJ13057	germ cell-less homolog 1 (drosophila)-like
NM_033128	0.0435	1.419	1.419 SCIN	Scinderin
AK056562	0.0188	1.416	1.416 EBNA1BP2	EBNA1 binding protein 2
AK056751	0.0194	1.416	1.416 MGC20446	cytochrome b, ascorbate dependent 3
NM_033297	0.018	1.413	1.413 RNO2	Leucine-rich-repeat protein
NM_001824	0.00154	1.412	1.412 CKM	Creatine kinase, muscle
NM_004827	0.0354	1.412	1.412 ABCG2	ATP-binding cassette, sub-family G (WHITE), member 2
NM_016161	0.0454	1.412	1.412 LOC51146	Alpha-1,4-N-acetylglucosaminyltransferase
NM_006227	0.00613	1.411	1.411 PLTP	Phospholipid transfer protein
AK056372	0.0411	1.409	1.409 FLJ31810	leucine rich repeat neuronal 6c
AL121980	0.0218	1.409	1.409	high-mobility group box 4
AL133632	0.0485	1.409	1.409 DKFZp434E1	similar to hypothetical protein

NM_000704	0.0229	1.409	1.409 ATP4A	ATPase, H+/K+ exchanging, alpha polypeptide
AJ132194	0.0235	1.408	1.408 OR2N1P	Olfactory receptor, family 2, subfamily N, member 1 pseudogene
NM_001384	0.0031	1.408	1.408 DPH2L2	Diphtheria toxin resistance protein required for diphthamide biosynthesis-like
NM_014621	0.0243	1.408	1.408 HOXD4	Homeo box D4
AB037826	0.0194	1.407	1.407 KIAA1405	kinesin family member 17
NM_031918	0.017	1.407	1.407 KLF16	Kruppel-like factor 16
BC015904	0.042	1.405	1.405 MRPL10	Mitochondrial ribosomal protein L10
NM_016188	0.0123	1.405	1.405 ACTL6	Actin-like 6
NM_024956	0.0493	1.404	1.404 FLJ23375	transmembrane protein 62
NM_012480	0.0475	1.403	1.403 ZNF73	Zinc finger protein 73 (Cos12)
NM_014617	0.0067	1.403	1.403 CRYGA	Crystallin, gamma A
AJ420467	0.00273	1.401	1.401 PAPP	pregnancy-associated plasma protein a, pappalysin 1
NM_022375	0.00654	1.401	1.401 OCLM	Oculomedin
AK056596	0.0325	0.714	-1.400560224 ZFP90	zinc finger protein 90 homolog (mouse)
D28588	0.00848	0.714	-1.400560224 SP2	Sp2 transcription factor
NM_017914	0.0177	0.708	-1.412429379 FLJ20640	Hypothetical protein FLJ20640
NM_004904	0.0106	0.707	-1.414427157 H_GS165L15	CAMP response element-binding protein CRE-BPa
AF332558	0.000709	0.706	-1.416430595 BBC3	Bcl-2 binding component 3
BC009627	0.038	0.706	-1.416430595 PYM	within bgcn homolog (drosophila)
AL049998	0.0175	0.705	-1.418439716 PIK3C2A	phosphoinositide-3-kinase, class 2, alpha polypeptide
AK057668	0.042	0.703	-1.422475107	aryl hydrocarbon receptor
NM_015626	0.00646	0.703	-1.422475107 WSB1	SOCS box-containing WD protein SWiP-1
NM_145040	0.00932	0.7	-1.428571429 ENSG000001	PROTEIN KINASE C, DELTA BINDING PROTEIN. [Source:RefSeq;Acc:NM
AK055219	0.0329	0.699	-1.430615165 LOC148137	Homo sapiens cDNA FLJ30657 fis, clone DFNES2000335
NM_005998	0.00726	0.698	-1.432664756 CCT3	Chaperonin containing TCP1, subunit 3 (gamma)
AK055198	0.0178	0.696	-1.436781609 LOC286075	zinc finger protein 707
NM_022903	0.0486	0.696	-1.436781609 FLJ12800	Hypothetical protein FLJ12800
AK056809	0.0324	0.695	-1.438848921 LOC116064	leucine rich repeat containing 58
AL353946	0.0453	0.694	-1.44092219	hypothetical protein dkfzp761i2114
AK057062	0.0315	0.692	-1.445086705 BID	bh3 interacting domain death agonist
BC011630	0.00515	0.692	-1.445086705 LOC170394	pwwp domain containing 2
NM_001383	0.0348	0.692	-1.445086705 DPH2L1	Diphtheria toxin resistance protein required for diphthamide biosynthesis-like
NM_004186	0.0121	0.691	-1.447178003 SEMA3F	Sema domain, immunoglobulin domain (Ig), short basic domain, secreted, (
NM_017971	0.0382	0.691	-1.447178003 MRPL20	Mitochondrial ribosomal protein L20
NM_000363	0.0281	0.69	-1.449275362 TNNI3	Troponin I, cardiac
NM_001374	0.0108	0.69	-1.449275362 DNASE1L2	Deoxyribonuclease I-like 2
AL137312	0.0355	0.688	-1.453488372 ACP33	spastic paraplegia 21 (autosomal recessive, mast syndrome)

NM_000805	0.0115	0.687	-1.455604076	GAS	Gastrin
NM_005442	0.0479	0.687	-1.455604076	EOMES	Eomesodermin homolog (Xenopus laevis)
NM_018896	0.00181	0.685	-1.459854015	CACNA1G	Calcium channel, voltage-dependent, alpha 1G subunit
AK024514	0.00855	0.683	-1.464128843	JJAZ1	suppressor of zeste 12 homolog (drosophila)
NM_005386	0.000492	0.683	-1.464128843	NNAT	Neuronatin
Y10183	0.00643	0.682	-1.46627566	ALCAM	Activated leucocyte cell adhesion molecule
AK055864	0.0101	0.681	-1.468428781	HSD-3.1	spermatogenesis associated 7
NM_025080	0.000531	0.681	-1.468428781	FLJ22316	asparaginase like 1
AB011106	0.0295	0.679	-1.47275405	KIAA0534	attractin-like 1
NM_014788	0.0118	0.679	-1.47275405	TRIM14	Tripartite motif-containing 14
NM_002947	0.0203	0.678	-1.474926254	RPA3	Replication protein A3 (14kD)
NM_015629	0.0163	0.678	-1.474926254	PRPF31	PRP31 pre-mRNA processing factor 31 homolog (yeast)
BC011028	0.0282	0.677	-1.477104874	TBX5	t-box 5
AK058144	0.0428	0.674	-1.483679525	FLJ25415	Homo sapiens cDNA FLJ25415 fis, clone TST03443
NM_053276	0.028	0.674	-1.483679525	VIT	Homo sapiens vitrin (VIT), mRNA
D63480	0.00393	0.673	-1.485884101	KIAA0146	KIAA0146 protein
NM_003104	0.0103	0.672	-1.488095238	SORD	Sorbitol dehydrogenase
NM_024570	0.013	0.672	-1.488095238	FLJ11712	deleted in leukemia 8 protein
NM_002948	0.0196	0.671	-1.490312966	RPL15	Ribosomal protein L15
AL117234	0.0331	0.67	-1.492537313	MCF2	MCF.2 cell line derived transforming sequence
D30612	0.0395	0.668	-1.497005988	ZNF282	Zinc finger protein 282
NM_006666	0.0143	0.668	-1.497005988	RUVBL2	RuvB-like 2 (E. coli)
AB011180	0.0211	0.667	-1.499250375	KIAA0608	tbc1 domain family member 12
AF247704	0.0389	0.667	-1.499250375	NKX3A	NK3 transcription factor homolog A (Drosophila)
AK058098	0.0176	0.666	-1.501501502	FLJ25369	Homo sapiens cDNA FLJ25369 fis, clone TST01830
BC009491	0.0381	0.664	-1.506024096	KIF1A	kinesin family member 1a
NM_001750	0.0239	0.657	-1.522070015	CAST	Calpastatin
NM_019100	0.0317	0.654	-1.529051988	DMAP1	DNA methyltransferase 1-associated protein 1
NM_002268	0.0487	0.653	-1.531393568	KPNA4	Karyopherin alpha 4 (importin alpha 3)
NM_006236	0.0356	0.653	-1.531393568	POU3F3	POU domain, class 3, transcription factor 3
NM_017987	0.0165	0.653	-1.531393568	Rabip4R	Run- and FYVE-domain containing protein
NM_024512	0.00777	0.653	-1.531393568	LRRC2	Leucine-rich repeat-containing 2
BC018028	0.0189	0.651	-1.53609831	MDS009	dtw domain containing 1
AB002363	0.0478	0.65	-1.538461538	KIAA0365	KIAA0365 gene product
NM_022568	0.0353	0.645	-1.550387597	ALDH8A1	Aldehyde dehydrogenase 8 family, member A1
NM_002453	0.0105	0.643	-1.555209953	MTIF2	Mitochondrial translational initiation factor 2
NM_001977	0.0217	0.642	-1.557632399	ENPEP	Glutamyl aminopeptidase (aminopeptidase A)

NM_005558	0.00498	0.641	-1.560062402	LAD1	Ladinin 1
NM_007171	0.0141	0.641	-1.560062402	POMT1	Protein-O-mannosyltransferase 1
NM_002964	0.036	0.64	-1.5625	S100A8	S100 calcium binding protein A8 (calgranulin A)
BG535392	0.0446	0.639	-1.564945227	IGKV1-13	Immunoglobulin kappa variable 1-13
AF174394	0.0259	0.638	-1.567398119		apoptotoc-related protein pcar
NM_024423	0.0179	0.638	-1.567398119	DSC3	Desmocollin 3
NM_007373	0.0437	0.637	-1.569858713	SHOC2	Soc-2 suppressor of clear homolog (C. elegans)
NM_170783	0.00799	0.637	-1.569858713	ENSG000000	ZINC RIBBON DOMAIN CONTAINING, 1; TRANSCRIPTION-ASSOCIATE
NM_000971	0.000951	0.636	-1.572327044	RPL7	Ribosomal protein L7
NM_018075	0.039	0.636	-1.572327044	FLJ10375	transmembrane protein 16k
NM_000748	0.0011	0.635	-1.57480315	CHRNB2	Cholinergic receptor, nicotinic, beta polypeptide 2 (neuronal)
NM_004379	0.0351	0.635	-1.57480315	CREB1	CAMP responsive element binding protein 1
U63332	0.0282	0.634	-1.577287066		Human super cysteine rich protein mRNA, partial cds
NM_139281	0.0475	0.633	-1.579778831	TA-WDRP	T-CELL ACTIVATION WD REPEAT PROTEIN; SIMILAR TO SD06427P. [S
NM_004131	0.00435	0.632	-1.582278481	GZMB	Granzyme B (granzyme 2, cytotoxic T-lymphocyte-associated serine estera
AK027135	0.0121	0.627	-1.594896332	LOC283970	Homo sapiens cDNA: FLJ23482 fis, clone KAIA03142
NM_003021	0.0382	0.627	-1.594896332	SGT	Small glutamine-rich tetratricopeptide repeat (TPR)-containing
NM_000121	0.0197	0.626	-1.597444089	EPOR	Erythropoietin receptor
AK057913	0.039	0.622	-1.607717042	USP54	Homo sapiens cDNA FLJ25184 fis, clone CBR09423
NM_006739	0.013	0.621	-1.610305958	MCM5	MCM5 minichromosome maintenance deficient 5, cell division cycle 46 (S. c
NM_001735	0.0303	0.619	-1.615508885	C5	Complement component 5
NM_003860	0.046	0.618	-1.618122977	BCRP1	Breakpoint cluster region protein, uterine leiomyoma, 1; barrier to autointegi
AK002036	0.0293	0.617	-1.620745543		torsin a interacting protein 2
NM_003574	0.00416	0.616	-1.623376623	VAPA	VAMP (vesicle-associated membrane protein)-associated protein A (33kD)
AL137551	0.00245	0.615	-1.62601626	C10orf39	chromosome 10 open reading frame 39
NM_004767	0.0295	0.613	-1.63132137	ET(B)R-LP-2	Endothelin type b receptor-like protein 2
NM_005383	0.016	0.611	-1.636661211	NEU2	Sialidase 2 (cytosolic sialidase)
NM_016232	0.0208	0.61	-1.639344262	IL1RL1	Interleukin 1 receptor-like 1
NM_020999	0.0381	0.608	-1.644736842	NEUROG3	Neurogenin 3
AK057684	0.0233	0.607	-1.647446458	SF3B1	splicing factor 3b, subunit 1, 155kda
NM_015456	0.0106	0.606	-1.650165017	DKFZP586B0	cofactor of brca1
NM_016220	0.0158	0.606	-1.650165017	ZFD25	Zinc finger protein (ZFD25)
NM_003900	0.00755	0.604	-1.655629139	SQSTM1	Sequestosome 1
NM_006024	0.0198	0.602	-1.661129568	TAX1BP1	Tax1 (human T-cell leukemia virus type I) binding protein 1
BC004930	0.0104	0.601	-1.663893511	FLJ21941	zinc finger protein 614
NM_000767	0.0175	0.601	-1.663893511	CYP2B6	Cytochrome P450, subfamily IIB (phenobarbital-inducible), polypeptide 6
NM_004727	0.00106	0.6	-1.666666667	SLC24A1	Solute carrier family 24 (sodium/potassium/calcium exchanger), member 1

BC011721	0.00552	0.598	-1.672240803	TUBA2	Tubulin, alpha 2
NM_005431	0.00296	0.598	-1.672240803	XRCC2	X-ray repair complementing defective repair in Chinese hamster cells 2
NM_005057	0.0142	0.597	-1.675041876	RBBP5	Retinoblastoma binding protein 5
NM_002335	0.0457	0.596	-1.677852349	LRP5	Low density lipoprotein receptor-related protein 5
BC014255	0.0241	0.593	-1.686340641		hypothetical protein flj14346
NM_007107	0.0366	0.592	-1.689189189	SSR3	Signal sequence receptor, gamma (translocon-associated protein gamma)
NM_018458	0.0325	0.59	-1.694915254	BM042	Uncharacterized bone marrow protein BM042
NM_006688	0.00165	0.589	-1.697792869	CRF	C1q-related factor
NM_001934	0.0449	0.588	-1.700680272	DLX4	Distal-less homeobox 4
AK055809	0.00464	0.587	-1.703577513	LOC148709	Homo sapiens cDNA FLJ31247 fis, clone KIDNE2005296, weakly similar to
AK054999	0.000623	0.586	-1.706484642		Homo sapiens cDNA FLJ30437 fis, clone BRACE2009045
NM_003811	0.0408	0.586	-1.706484642	TNFSF9	Tumor necrosis factor (ligand) superfamily, member 9
NM_023005	0.0379	0.584	-1.712328767	BAZ1B	Bromodomain adjacent to zinc finger domain, 1B
NM_003665	0.0377	0.583	-1.715265866	FCN3	Ficolin (collagen/fibrinogen domain containing) 3 (Hakata antigen)
NM_009587	0.0487	0.582	-1.718213058	LGALS9	Lectin, galactoside-binding, soluble, 9 (galectin 9)
AK026902	0.00637	0.581	-1.721170396	GNA13	guanine nucleotide binding protein (g protein), alpha 13
AK055476	0.00494	0.581	-1.721170396	ARHGEF7	rho guanine nucleotide exchange factor (gef) 7
NM_002031	0.0322	0.58	-1.724137931	FRK	Fyn-related kinase
NM_001628	0.00349	0.577	-1.733102253	AKR1B1	Aldo-keto reductase family 1, member B1 (aldose reductase)
NM_006516	0.0474	0.575	-1.739130435	SLC2A1	Solute carrier family 2 (facilitated glucose transporter), member 1
NM_014751	0.0169	0.575	-1.739130435	KIAA0429	metastasis suppressor 1
AK055991	0.0473	0.572	-1.748251748	LAMR1	Laminin receptor 1 (67kD, ribosomal protein SA)
AB018297	0.00226	0.571	-1.751313485	KIAA0754	microtubule-actin crosslinking factor 1
NM_002952	0.0323	0.571	-1.751313485	RPS2	Ribosomal protein S2
AK024302	0.0121	0.57	-1.754385965	OCIA	ocia domain containing 1
NM_012096	0.00373	0.57	-1.754385965	APPL	Adaptor protein containing pH domain, PTB domain and leucine zipper motif
NM_003166	0.00498	0.567	-1.76366843	SULT1A3	Sulfotransferase family, cytosolic, 1A, phenol-preferring, member 3
AJ237663	0.00385	0.566	-1.766784452	C10orf71	Homo sapiens ORF1
AL050349	0.00578	0.566	-1.766784452		chromatin modifying protein 4b
NM_006294	0.0324	0.564	-1.773049645	UQCRB	Ubiquinol-cytochrome c reductase binding protein
NM_017823	0.013	0.562	-1.779359431	FLJ20442	dual specificity phosphatase 23
NM_004311	0.00474	0.56	-1.785714286	ARL3	ADP-ribosylation factor-like 3
NM_014750	0.0165	0.557	-1.795332136	KIAA0008	discs, large homolog 7 (drosophila)
NM_004363	0.0469	0.556	-1.798561151	CEACAM5	Carcinoembryonic antigen-related cell adhesion molecule 5
AB011137	0.00125	0.554	-1.805054152	KIAA0565	KIAA0565 gene product
NM_006780	0.0293	0.554	-1.805054152	SMA3	SMA3
NM_000394	0.0376	0.553	-1.808318264	CRYAA	Crystallin, alpha A

AL137663	0.0453	0.551	-1.814882033	PHLDB2	pleckstrin homology-like domain, family b, member 2
NM_014754	0.0328	0.551	-1.814882033	PTDSS1	phosphatidylserine synthase 1
NM_006607	0.0365	0.548	-1.824817518	PTTG2	PITUITARY TUMOR-TRANSFORMING 2. [Source:RefSeq;Acc:NM_006607
NM_006869	0.0338	0.547	-1.828153565	CENTA1	Centaurin, alpha 1
AB011128	0.0301	0.544	-1.838235294	KIAA0556	KIAA0556 protein
NM_022828	0.04	0.544	-1.838235294	FLJ21940	yth domain containing 2
AK022100	0.00264	0.542	-1.84501845	KIAA0256	Homo sapiens cDNA FLJ12038 fis, clone HEMBB1001922
AK056682	0.0402	0.541	-1.848428835		chromosome 1 open reading frame 160
X83301	0.00109	0.541	-1.848428835	SMA5	SMA5
NM_001033	0.00125	0.537	-1.862197393	RRM1	Ribonucleotide reductase M1 polypeptide
NM_000158	0.0257	0.534	-1.872659176	GBE1	Glucan (1,4-alpha-), branching enzyme 1 (glycogen branching enzyme, Anc
NM_013338	0.019	0.534	-1.872659176	ALG5	Alg5, S. cerevisiae, homolog of
AB058689	0.0035	0.533	-1.876172608	KIAA1786	KIAA1786 protein
BC013155	0.00649	0.532	-1.879699248	CRYZL1	crystallin, zeta (quinone reductase)-like 1
NM_007350	0.000458	0.53	-1.886792453	ENSG000001	PLECKSTRIN HOMOLOGY-LIKE DOMAIN, FAMILY A, MEMBER 1; PQ-R
NM_001428	0.00499	0.529	-1.890359168	ENO1	Enolase 1, (alpha)
NM_021210	0.0357	0.529	-1.890359168	MUM2	MUM2 protein
NM_017512	0.0128	0.526	-1.901140684	HSRTSBETA	RTS beta protein
AK054575	0.04	0.524	-1.908396947		adenosylmethionine decarboxylase 1
NM_017711	0.0381	0.524	-1.908396947	FLJ20207	glycerophosphodiester phosphodiesterase domain containing 2
NM_017701	0.022	0.523	-1.912045889	ARHGAP8	Rho GTPase activating protein 8
NM_030979	0.049	0.522	-1.915708812	PABPC3	Poly(A) binding protein, cytoplasmic 3
NM_002816	0.0411	0.521	-1.919385797	PSMD12	Proteasome (prosome, macropain) 26S subunit, non-ATPase, 12
AB020694	0.013	0.52	-1.923076923	KIAA0887	ubx domain containing 8
NM_020410	0.00112	0.52	-1.923076923	CGI-152	atpase type 13a1
NM_003787	0.0245	0.517	-1.934235977	NOL4	Nucleolar protein 4
NM_014463	0.0397	0.517	-1.934235977	LSM3	Lsm3 protein
NM_144963	0.00673	0.517	-1.934235977	ENSG000001	UNKNOWN
AK022122	0.000165	0.515	-1.941747573	MTBP	Mdm2, transformed 3T3 cell double minute 2, p53 binding protein (mouse) l
AK055590	0.0161	0.515	-1.941747573	LOC376693	Homo sapiens cDNA FLJ31028 fis, clone HLUNG2000570, weakly similar t
NM_014862	0.0219	0.514	-1.945525292	ARNT2	Aryl-hydrocarbon receptor nuclear translocator 2
NM_000029	0.00684	0.512	-1.953125	AGT	Angiotensinogen (serine (or cysteine) proteinase inhibitor, clade A (alpha-1
NM_004134	0.01	0.511	-1.956947162	HSPA9B	Heat shock 70kD protein 9B (mortalin-2)
NM_021074	0.00565	0.511	-1.956947162	NDUFV2	NADH dehydrogenase (ubiquinone) flavoprotein 2 (24kD)
NM_005603	0.0164	0.509	-1.964636542	ATP8B1	ATPase, Class I, type 8B, member 1
NM_013291	0.0312	0.508	-1.968503937	CPSF1	Cleavage and polyadenylation specific factor 1, 160kD subunit
NM_006501	0.00231	0.506	-1.976284585	MOBP	Myelin-associated oligodendrocyte basic protein

BC002828	0.0148	0.504	-1.984126984	HSU84971	fetal hypothetical protein
NM_032133	0.00397	0.504	-1.984126984	DKFZP434N1	mycbp associated protein
AK026955	0.00256	0.503	-1.988071571	DKFZp547E0	rhomboid domain containing 1
AK022806	0.0182	0.501	-1.996007984	LOC340281	Homo sapiens cDNA FLJ31922 fis, clone NT2RP7005219
AK027745	0.0259	0.501	-1.996007984	WDR21	wd repeat domain 21a
NM_006089	0.00185	0.501	-1.996007984	SCML2	Sex comb on midleg-like 2 (Drosophila)
NM_018291	0.0457	0.495	-2.02020202	FLJ10986	hypothetical protein flj10986
NM_020665	0.0342	0.494	-2.024291498	NX-17	Kidney-specific membrane protein
NM_015718	0.0334	0.492	-2.032520325	NOX3	NADPH oxidase 3
NM_021806	0.0161	0.492	-2.032520325		2.19 2.19 gene
NM_001416	0.045	0.491	-2.036659878	EIF4A1	Eukaryotic translation initiation factor 4A, isoform 1
NM_015414	0.00535	0.488	-2.049180328	RPL36	Ribosomal protein L36
AL359591	0.0115	0.487	-2.05338809	DKFZp762O0	transmembrane protein 55a
NM_024526	0.00624	0.484	-2.066115702	FLJ21522	eps8-like 3
AK024172	0.00373	0.481	-2.079002079	UBE2I	Ubiquitin-conjugating enzyme E2I (UBC9 homolog, yeast)
NM_030819	0.0151	0.48	-2.083333333	MGC11335	Hypothetical protein MGC11335
NM_017677	0.0164	0.479	-2.087682672	FLJ20126	myotubularin related protein 8
NM_016587	0.0416	0.475	-2.105263158	CBX3	Chromobox homolog 3 (HP1 gamma homolog, Drosophila)
NM_000365	0.00684	0.471	-2.123142251	TPI1	Triosephosphate isomerase 1
NM_005504	0.033	0.471	-2.123142251	BCAT1	Branched chain aminotransferase 1, cytosolic
NM_031278	0.0345	0.47	-2.127659574	TDRD1	Tudor domain containing 1
AF006199	0.00878	0.468	-2.136752137	FLJ90396	Homo sapiens leukemia susceptibility mRNA, 3' region
NM_033301	0.0103	0.463	-2.159827214	RPL8	Ribosomal protein L8
NM_000269	0.0357	0.461	-2.169197397	NME1	Non-metastatic cells 1, protein (NM23A) expressed in
NM_014228	0.0115	0.459	-2.178649237	SLC6A7	Solute carrier family 6 (neurotransmitter transporter, L-proline), member 7
NM_016126	0.0338	0.459	-2.178649237	LOC51668	HSPCO34 protein
NM_016042	0.00438	0.457	-2.188183807	RRP40	Exosome component Rrp40
M37712	0.00829	0.456	-2.192982456	CDC2L2	Cell division cycle 2-like 2
NM_005326	0.0216	0.455	-2.197802198	HAGH	Hydroxyacyl glutathione hydrolase
NM_016167	0.0238	0.454	-2.202643172	RARG-1	Retinoic acid repressible protein
NM_024894	0.00266	0.454	-2.202643172	FLJ14075	nucleolar protein 10
NM_000238	0.0393	0.452	-2.212389381	KCNH2	Potassium voltage-gated channel, subfamily H (eag-related), member 2
NM_000988	0.0107	0.452	-2.212389381	RPL27	Ribosomal protein L27
AK024871	0.0139	0.45	-2.222222222	APBB2	amyloid beta (a4) precursor protein-binding, family b, member 2 (fe65-like)
BC006279	0.0251	0.449	-2.227171492	LOC199692	zinc finger protein 627
NM_031432	0.0122	0.448	-2.232142857	UCK1	Uridine-cytidine kinase 1
AK000637	0.0259	0.447	-2.237136465	HSPC043	chromosome 9 open reading frame 71

NM_001090	0.000972	0.447	-2.237136465	ABCF1	ATP-binding cassette, sub-family F (GCN20), member 1
NM_152398	0.0122	0.447	-2.237136465	MGC45416	SIMILAR TO EVIDENCE:NAS
AK026914	0.000611	0.444	-2.252252252		snf1-like kinase 2
NM_000992	0.0117	0.439	-2.277904328	RPL29	Ribosomal protein L29
BC012928	0.0104	0.435	-2.298850575	C6orf150	chromosome 6 open reading frame 150
AK022023	0.000392	0.433	-2.309468822	KIAA0889	Homo sapiens cDNA FLJ11961 fis, clone HEMBB1001020, highly similar to
NM_032351	0.00245	0.43	-2.325581395	MRPL45	Mitochondrial ribosomal protein L45
AK025943	0.00215	0.429	-2.331002331	KIAA2002	Homo sapiens cDNA: FLJ22290 fis, clone HRC04405
AK055254	0.0132	0.427	-2.341920375		Homo sapiens cDNA FLJ30692 fis, clone FCBBF2000677
NM_032385	0.00831	0.427	-2.341920375	C5orf4	Chromosome 5 open reading frame 4
NM_000999	0.00529	0.424	-2.358490566	RPL38	Ribosomal protein L38
NM_006457	0.000669	0.422	-2.369668246	LIM	LIM protein (similar to rat protein kinase C-binding enigma)
NM_017493	0.0286	0.421	-2.375296912	HSN1	Hin-1
NM_014300	0.00643	0.42	-2.380952381	SPC18	Signal peptidase complex (18kD)
NM_013264	0.0026	0.419	-2.386634845	GRTH	Gonadotropin-regulated testicular RNA helicase
NM_021094	0.0379	0.415	-2.409638554	SLC21A3	Solute carrier family 21 (organic anion transporter), member 3
BC016509	0.0183	0.414	-2.415458937	SCAMP-4	Secretory carrier membrane protein 4
BC009980	0.00245	0.408	-2.450980392	LOC113730	kelch domain containing 7b
AL080220	0.0159	0.407	-2.457002457	DKFZP586P0123	DKFZP586P0123 protein
NM_000405	0.0279	0.406	-2.463054187	GM2A	GM2 ganglioside activator protein
NM_003217	0.00496	0.406	-2.463054187	TEGT	Testis enhanced gene transcript (BAX inhibitor 1)
NM_004939	0.0451	0.404	-2.475247525	DDX1	DEAD/H (Asp-Glu-Ala-Asp/His) box polypeptide 1
NM_005859	0.00182	0.404	-2.475247525	PURA	Purine-rich element binding protein A
NM_002790	0.00425	0.402	-2.487562189	PSMA5	Proteasome (prosome, macropain) subunit, alpha type, 5
AK057950	0.0383	0.399	-2.506265664	FLJ30596	Homo sapiens cDNA FLJ25221 fis, clone STM00723
NM_025144	0.00995	0.399	-2.506265664	FLJ22670	kiaa1527 protein
NM_019598	0.0267	0.397	-2.518891688	KLK12	Homo sapiens kallikrein 12 (KLK12), mRNA
NM_020232	0.0182	0.394	-2.538071066	MDS003	tumor necrosis factor superfamily, member 5-induced protein 1
Z80777	0.0465	0.393	-2.544529262	H2AFKP	H2A histone family, member K, pseudogene
NM_021246	0.00844	0.392	-2.551020408	MEGT1	Megakaryocyte-enhanced gene transcript 1 protein
NM_003536	0.00397	0.39	-2.564102564	H3FK	H3 histone family, member K
NM_004234	0.00167	0.39	-2.564102564	ZFP93	Zinc finger protein 93 homolog (mouse)
AF067801	0.0455	0.389	-2.570694087	HDCGC21P	Hypothetical protein HDCGC21P
AK055523	0.0252	0.389	-2.570694087	SLC2A11	Solute carrier family 2 (facilitated glucose transporter), member 11
AF090094	0.0295	0.386	-2.590673575	OAZ1	Ornithine decarboxylase antizyme 1
AK055800	0.00324	0.385	-2.597402597	MGC49942	Homo sapiens cDNA FLJ31238 fis, clone KIDNE2004864
AK054816	0.0378	0.383	-2.610966057	FTH1	Ferritin, heavy polypeptide 1

NM_002512	0.0226	0.383	-2.610966057	NME2	Non-metastatic cells 2, protein (NM23B) expressed in
AK057209	0.0047	0.382	-2.617801047	MGC4728	similar to hypothetical protein flj23233
NM_022135	0.0211	0.382	-2.617801047	POP2	Popeye protein 2
NM_002439	0.00106	0.381	-2.624671916	MSH3	MutS homolog 3 (E. coli)
NM_004964	0.0103	0.377	-2.652519894	HDAC1	Histone deacetylase 1
BC015213	0.00278	0.372	-2.688172043		flj37035 protein
NM_001499	0.00958	0.372	-2.688172043	GLE1L	GLE1 RNA export mediator-like (yeast)
NM_003380	0.0139	0.372	-2.688172043	VIM	Vimentin
NM_021029	0.0357	0.372	-2.688172043	RPL36A	Ribosomal protein L36a
NM_000942	0.0144	0.371	-2.69541779	PPIB	Peptidylprolyl isomerase B (cyclophilin B)
BC009198	0.0409	0.368	-2.717391304		family with sequence similarity 89, member a
NM_013438	0.0064	0.367	-2.72479564	UBQLN1	Ubiquilin 1
NM_032121	0.0123	0.366	-2.732240437	DKFZp564K1	implantation-associated protein
NM_004995	0.00247	0.362	-2.762430939	MMP14	Matrix metalloproteinase 14 (membrane-inserted)
NM_032414	0.000814	0.36	-2.777777778	PROK1	Prokineticin 1 precursor
NM_003254	0.00842	0.359	-2.78551532	TIMP1	Tissue inhibitor of metalloproteinase 1 (erythroid potentiating activity, collag
BF541376	0.00443	0.356	-2.808988764		ESTs, Weakly similar to FRHUL ferritin light chain [H.sapiens]
AK056357	0.00393	0.352	-2.840909091	FLJ31795	coiled-coil domain containing 43
NM_001724	0.0264	0.35	-2.857142857	BPGM	2,3-bisphosphoglycerate mutase
NM_005268	0.023	0.347	-2.88184438	GJB5	Gap junction protein, beta 5 (connexin 31.1)
NM_014694	0.0353	0.344	-2.906976744	KIAA0605	adamts-like 2
NM_054110	0.0104	0.343	-2.915451895	GALNTL2	Homo sapiens, Similar to RIKEN cDNA 4631401E18 gene, clone MGC:173
NM_004046	0.0492	0.341	-2.93255132	ENSG000001	ATP SYNTHASE ALPHA CHAIN, MITOCHONDRIAL PRECURSOR (EC 3.
NM_006985	0.00992	0.341	-2.93255132	NPIP	Nuclear pore complex interacting protein
AK024516	0.000179	0.336	-2.976190476	PSIP1	pc4 and sfrs1 interacting protein 1
AK023323	0.0388	0.332	-3.012048193	DHRS6	Homo sapiens cDNA FLJ13261 fis, clone OVARC1000885, weakly similar t
NM_001912	0.0181	0.327	-3.058103976	CTSL	Cathepsin L
D86358	0.0444	0.323	-3.095975232	SIGLEC6	Sialic acid binding Ig-like lectin 6
NM_017840	0.00325	0.322	-3.105590062	MRPL16	Mitochondrial ribosomal protein L16
NM_005147	0.0163	0.317	-3.154574132	DNAJA3	DnaJ (Hsp40) homolog, subfamily A, member 3
NM_005953	0.0327	0.315	-3.174603175	ENSG000001	METALLOTHIONEIN-II (MT-II) (METALLOTHIONEIN 2A). [Source:SWISSF
NM_021104	0.0141	0.315	-3.174603175	RPL41	Ribosomal protein L41
AK021571	0.00285	0.314	-3.184713376	RPL35A	ribosomal protein l35a
J05582	0.0232	0.309	-3.236245955	MUC1	Mucin 1, transmembrane
NM_007262	0.029	0.307	-3.25732899	DJ-1	RNA-binding protein regulatory subunit
AF273048	0.00774	0.304	-3.289473684	SLK	Homo sapiens CTCL tumor antigen se20-9 mRNA, complete cds
NM_001908	0.00809	0.304	-3.289473684	CTSB	Cathepsin B

AK055139	0.0125	0.302	-3.311258278	PTK2; FAK; F	ptk2 protein tyrosine kinase 2
NM_006896	0.00532	0.3	-3.333333333	HOXA7	Homeo box A7
AB033079	0.0261	0.299	-3.344481605	KIAA1253	serine incorporator 1
NM_005388	0.0467	0.299	-3.344481605	PDCL	Phosducin-like
BC001131	0.00273	0.294	-3.401360544	H2BFA	H2B histone family, member A
Z82188	0.0231	0.294	-3.401360544		Human DNA sequence from clone RP1-151B14 on chromosome 22 Contain
NM_001961	0.0413	0.292	-3.424657534	EEF2	Eukaryotic translation elongation factor 2
NM_014077	0.00754	0.292	-3.424657534	DKFZP586O	family with sequence similarity 32, member a
S69284	0.0418	0.292	-3.424657534	TCR alpha	Homo sapiens T-cell receptor alpha chain (TCR alpha) mRNA, partial cds
AK056063	0.0112	0.291	-3.436426117	LOC146443	Homo sapiens cDNA FLJ31501 fis, clone NT2NE2005537
NM_003851	0.00433	0.29	-3.448275862	CREG	Cellular repressor of E1A-stimulated genes
NM_023036	0.0117	0.288	-3.472222222	DNAI2	Dynein intermediate chain 2
AB040897	0.0365	0.285	-3.50877193	KIAA1464	ran binding protein 10
AK057567	0.0169	0.281	-3.558718861	AP4B1	adaptor-related protein complex 4, beta 1 subunit
NM_001030	0.0148	0.28	-3.571428571	RPS27	Ribosomal protein S27 (metalloprotein 1)
AK023419	0.00962	0.278	-3.597122302	RPL37A	Ribosomal protein L37a
NM_000884	0.0104	0.272	-3.676470588	IMPDH2	IMP (inosine monophosphate) dehydrogenase 2
BC014951	0.0196	0.27	-3.703703704	C20orf107; d	chromosome 20 open reading frame 107
NM_005433	0.0169	0.27	-3.703703704	YES1	V-yes-1 Yamaguchi sarcoma viral oncogene homolog 1
AK056182	0.0314	0.268	-3.731343284		kelch repeat and btb (poz) domain containing 7
AK057966	0.0232	0.255	-3.921568627	LOC152185	coiled-coil domain containing 52
U81001	0.00817	0.254	-3.937007874	SNURF	SNRPN upstream reading frame
NM_003455	0.00338	0.253	-3.95256917	ZNF202	Zinc finger protein 202
NM_022784	0.00705	0.253	-3.95256917	FLJ12476	iq motif containing h
NM_016224	0.0414	0.252	-3.968253968	SNX9	Sorting nexin 9
AK057933	0.0463	0.251	-3.984063745		Homo sapiens, clone IMAGE:3460539, mRNA, partial cds
AF090097	0.0166	0.246	-4.06504065		Homo sapiens clone IMAGE 25997
NM_006330	0.0444	0.244	-4.098360656	LYPLA1	Lysophospholipase I
NM_032330	0.00858	0.235	-4.255319149	MGC12536	calpain, small subunit 2
AC007785	0.00215	0.228	-4.385964912		Homo sapiens chromosome 19, BAC 282485 (CIT-B-344H19)
NM_021631	0.0115	0.223	-4.484304933	FKSG2	Apoptosis inhibitor
NM_002658	0.0142	0.219	-4.566210046	PLAU	Plasminogen activator, urokinase
NM_005499	0.0092	0.213	-4.694835681	UBA2	SUMO-1 activating enzyme subunit 2
AK026158	0.0189	0.21	-4.761904762	LOC348938	ichthyin protein
BE884585	0.0115	0.21	-4.761904762		TCR eta
NM_014671	0.0345	0.21	-4.761904762	KIAA0010	Ubiquitin-protein isopeptide ligase (E3)
NM_014363	0.00186	0.205	-4.87804878	SACS	Spastic ataxia of Charlevoix-Saguenay (sacsin)

NM_014216	0.0188	0.195	-5.128205128	ITPK1	Inositol 1,3,4-triphosphate 5/6 kinase
NM_014000	0.0371	0.194	-5.154639175	VCL	Vinculin
NM_000100	0.0298	0.179	-5.586592179	CSTB	Cystatin B (stefin B)
NM_016565	0.0467	0.173	-5.780346821	LOC51287	coiled-coil-helix-coiled-coil-helix domain containing 8
AK021981	0.0379	0.159	-6.289308176		zinc finger rna binding protein
NM_003330	0.0047	0.138	-7.246376812	TXNRD1	Thioredoxin reductase 1
NM_003720	0.012	0.128	-7.8125	DSCR2	Down syndrome critical region gene 2
NM_015702	0.0143	0.11	-9.090909091	CL25022	Hypothetical protein
AK026463	0.0221	0.0666	-15.01501502	B2M	Beta-2-microglobulin
AK056959	0.0453	0.0625	-16	THAP6	thap domain containing 6

Supplementary Table 2: Gene Ontology Classification of differentially expressed genes

Data tabulated using DAVID (Database for Annotation Visualization and Integrated Discovery)

	Enrichment Score	# genes
<i>Metabolism</i>	1.91	376
<i>Development</i>	1.33	153
<i>Cell Death</i>	1.52	45
<i>Translation</i>	1.71	35
<i>Differentiation</i>	1.27	87

Supplementary Table 3: Wnt Genes Identified in Lung Metastasis Signature

Gene	Fold Change	p-value significant?
LRP5	-1.68	yes
FZD9	1.59	yes
WISP2	1.77	yes
HOXA7	-3.33	yes
HOXD4	1.41	yes
HOXB5	1.81	yes
GNAQ	4.14	yes
HDAC1	-2.65	yes
CDH23	1.56	yes
NFATC3	1.6	yes
CCND3	1.46	yes
MYCL1	1.44	yes
ACVRL1	1.59	yes
Axin2	1.4	no
Dvl2	1.89	no
NFATC1	1.44	no
CREB1	-1.57	no
Wnt7a	-1.43	no
CD24	2.03	no
EN1	1.67	no
MUC1	-3.24	no

Supplemental Table 4: Differentiation Array Gene List and References				
Lineage	Gene Symbol	Refseq #	Official Full Name	Reference
	ACTG2	NM_001615	Actin, gamma 2, smooth muscle, enteric	
Both*	ATF3	NM_001674	Activating transcription factor 3	Oncomine
Luminal*	BCL7A	NM_020993	B-cell CLL/lymphoma 7A	Oncomine
Basal*	BAP1	NM_004656	BRCA1 associated protein-1 (ubiquitin carboxy-terminal hydrolase)	Oncomine
Basal	BTG2	NM_006763	BTG family, member 2	Shipitsin et al <i>Cancer Cell</i> 2007
Luminal	CDH1	NM_004360	Cadherin 1, type 1, E-cadherin (epithelial)	Gudjonsson et al <i>Genes Dev</i> 2002
Neither	CDH2	NM_001792	Cadherin 2, type 1, N-cadherin (neuronal)	Jones et al <i>Cancer Res</i> 2004
Basal	CDH3	NM_001793	Cadherin 3, type 1, P-cadherin (placental)	Rasbridge et al <i>J of Pathol</i> 1992
Luminal	CD24	NM_013230	CD24 molecule	Jones et al <i>Cancer Res</i> 2004
Stem	CD44	NM_000610	CD44 molecule (Indian blood group)	Shipitsin et al <i>Cancer Cell</i> 2007
Stem	CXCR4	NM_003467	Chemokine (C-X-C motif) receptor 4	Shen KC et al <i>Br Ca Res Treat</i> 2006
Luminal	CX3CL1	NM_002996	Chemokine (C-X3-C motif) ligand 1	Jones et al <i>Cancer Res</i> 2004
Stem	CHRD	NM_003741	Chordin	Shipitsin et al <i>Cancer Cell</i> 2007
Luminal	CLDN1	NM_021101	Claudin 1	Gudjonsson et al <i>Genes Dev</i> 2002
Luminal	CLDN7	NM_001307	Claudin 7	Blackman et al <i>Br Ca Res</i> 2005
Luminal*	CLDN8	NM_199328	Claudin 8	Oncomine
Basal	COL1A1	NM_000088	Collagen, type I, alpha 1	Jones et al <i>Cancer Res</i> 2004
Stem/Basal	EDNRB	NM_000115	Endothelin receptor type B	Shipitsin et al <i>Cancer Cell</i> 2007
Basal	EGFR	NM_005228	Epidermal growth factor receptor (erythroblastic leukemia viral (v-erb-b) oncogene homolog, avian)	Monaghan et al <i>Epithelial Cell Biol</i> 1995
Luminal	ESR1	NM_000125	Estrogen receptor 1	Shipitsin et al <i>Cancer Cell</i> 2007
Basal	FGFR1	NM_015850	Fibroblast growth factor receptor 1	Shipitsin et al <i>Cancer Cell</i> 2007
Basal/TGFb	FN1	NM_002026	Fibronectin 1	Shipitsin et al <i>Cancer Cell</i> 2007
Luminal	FOXA1	NM_004496	Forkhead box A1	Shipitsin et al <i>Cancer Cell</i> 2007
Basal	FOXC1	NM_001453	Forkhead box C1	Oncomine
Stem	FZD7	NM_003507	Frizzled homolog 7 (Drosophila)	Assou et al <i>Stem Cells</i> 2007
Stem*	FZD9	NM_003508	Frizzled homolog 9 (Drosophila)	Oncomine
Luminal	GATA3	NM_002051	GATA binding protein 3	Shipitsin et al <i>Cancer Cell</i> 2007
Stem	HOXB5	NM_002147	Homeobox B5	Phinney et al <i>Biochem Biophys Res</i> 2005
Stem	ID1	NM_002165	Inhibitor of DNA binding 1, dominant negative helix-loop-helix protein	Perry et al <i>Blood</i> 2007
Stem	ID3	NM_002167	Inhibitor of DNA binding 3, dominant negative helix-loop-helix protein	Shipitsin et al <i>Cancer Cell</i> 2007
Stem	ID4	NM_001546	Inhibitor of DNA binding 4, dominant negative helix-loop-helix protein	Shipitsin et al <i>Cancer Cell</i> 2007
Stem/Basal	IGFBP7	NM_001553	Insulin-like growth factor binding protein 7	Shipitsin et al <i>Cancer Cell</i> 2007
Basal	ITGA6	NM_000210	Integrin, alpha 6	Jones et al <i>Cancer Res</i> 2004
Basal	ITGB1	NM_002211	Integrin, beta 1 (fibronectin receptor, beta polypeptide, antigen CD29 includes MDF2, MSK12)	Shipitsin et al <i>Cancer Cell</i> 2007
Luminal	ITGB4	NM_000213	Integrin, beta 4	Lu S et al <i>Clin Can Res</i> 2008
Stem	IL1R1	NM_000877	Interleukin 1 receptor, type I	Shipitsin et al <i>Cancer Cell</i> 2007
Luminal	JUP	NM_002230	Junction plakoglobin	Shipitsin et al <i>Cancer Cell</i> 2007

Basal	KRT14	NM_000526	Keratin 14	Gudjonsson et al <i>Genes Dev</i> 2002
Basal	KRT17	NM_000422	Keratin 17	Shipitsin et al <i>Cancer Cell</i> 2007
Stem	KRT19	NM_002276	Keratin 19	Gudjonsson et al <i>Genes Dev</i> 2002
Luminal	KRT18	NM_000224	Keratin 18	Jones et al <i>Cancer Res</i> 2004
Basal	KRT5	NM_000424	Keratin 5	Bocker W et al <i>Vir Arch A Pathol Anat</i> 1992
Luminal	KRT8	NM_002273	Keratin 8	Shipitsin et al <i>Cancer Cell</i> 2007
Basal	LCN2	NM_005564	Lipocalin 2	Shipitsin et al <i>Cancer Cell</i> 2007
Stem	LRP1	NM_002332	Low density lipoprotein-related protein 1 (alpha-2-macroglobulin receptor)	Shipitsin et al <i>Cancer Cell</i> 2007
Stem	MMP14	NM_004995	Matrix metalloproteinase 14 (membrane-inserted)	Shipitsin et al <i>Cancer Cell</i> 2007
Luminal	MMP7	NM_002423	Matrix metalloproteinase 7 (matrilysin, uterine)	Shipitsin et al <i>Cancer Cell</i> 2007
Basal	MMP9	NM_004994	Matrix metalloproteinase 9 (gelatinase B, 92kDa gelatinase, 92kDa type IV collagenase)	Shipitsin et al <i>Cancer Cell</i> 2007
Basal	CALLA	NM_000902	Membrane metallo-endopeptidase	Gudjonsson et al <i>Genes Dev</i> 2002
Stem	MSX1	NM_002448	Msh homeobox 1	Shipitsin et al <i>Cancer Cell</i> 2007
Luminal	MUC1	NM_001018016	Mucin 1, cell surface associated	Gudjonsson et al <i>Genes Dev</i> 2002
Basal*	NPY1R	NM_000909	Neuropeptide Y receptor Y1	Oncomine
Stem	NOTCH1	NM_017617	Notch homolog 1, translocation-associated (Drosophila)	Shipitsin et al <i>Cancer Cell</i> 2007
Stem	NOTCH3	NM_000435	Notch homolog 3 (Drosophila)	Sansone et al <i>Stem Cells</i> 2007
Basal	OXTR	NM_000916	Oxytocin receptor	Bussolati et al <i>Am J Pathol</i> 1996
Stem	BMI1	NM_005180	BMI1 polycomb ring finger oncogene	Liu et al <i>Cancer Res</i> 2006
Luminal	PGR	NM_000926	Progesterone receptor	Kariagina A et al <i>Endocrinology</i> 2007
Luminal	PRLR	NM_000949	Prolactin receptor	Gill S et al <i>J Clin Pathol</i> 2001
Luminal	PROM1	NM_006017	Prominin 1	Sleeman et al <i>JCB</i> 2006
Stem	PROCR	NM_006404	Protein C receptor, endothelial (EPCR)	Shipitsin et al <i>Cancer Cell</i> 2007
Basal*	PCDH8	NM_002590	Protocadherin 8	Oncomine
Basal	MYLK	NM_053025	Myosin light chain kinase	Jones et al <i>Cancer Res</i> 2004
stem	CDKN1A	NM_000389	Cyclin-dependent kinase inhibitor 1A (p21, Cip1)	Shipitsin et al <i>Cancer Cell</i> 2007
Luminal	SFRP1	NM_003012	Secreted frizzled-related protein 1	Shipitsin et al <i>Cancer Cell</i> 2007
Stem/Basal	SPARC	NM_003118	Secreted protein, acidic, cysteine-rich (osteonectin)	Shipitsin et al <i>Cancer Cell</i> 2007
Stem	SERPINE1	NM_000602	Serpin peptidase inhibitor, clade E (nexin, plasminogen activator inhibitor type 1), member 1	Shipitsin et al <i>Cancer Cell</i> 2007
Luminal *	SLC39A6	NM_012319	Solute carrier family 39 (zinc transporter), member 6	Dressman et al <i>Pharmacogenomics</i> 2001
Luminal	SUSD3	NM_145006	Sushi domain containing 3	Oncomine
Basal/TGFb	THSD1	NM_199263	Thrombospondin, type I, domain containing 1	Shipitsin et al <i>Cancer Cell</i> 2007
Basal	THY1	NM_006288	Thy-1 cell surface antigen	Gudjonsson et al <i>Genes Dev</i> 2002
Basal	TIMP1	NM_003254	TIMP metalloproteinase inhibitor 1	Jones et al <i>Cancer Res</i> 2004
Stem/TGFb	TGFB1	NM_000660	Transforming growth factor, beta 1	Shipitsin et al <i>Cancer Cell</i> 2007
Stem/TGFb	TGFB3	NM_003239	Transforming growth factor, beta 3	Shipitsin et al <i>Cancer Cell</i> 2007
Stem/TGFb	TGFBI	NM_000358	Transforming growth factor, beta-induced, 68kDa	Shipitsin et al <i>Cancer Cell</i> 2007
Stem/TGFb	TAGLN	NM_003186	Transgelin	Shipitsin et al <i>Cancer Cell</i> 2007
Luminal	TFF3	NM_003226	Trefoil factor 3 (intestinal)	Shipitsin et al <i>Cancer Cell</i> 2007
Luminal	TTYH1	NM_020659	Tweety homolog 1 (Drosophila)	Oncomine

Luminal	ERBB2	NM_004448	V-erb-b2 erythroblastic leukemia viral oncogene homolog 2, neuro/glioblastoma derived oncogene homolog (avian)	Shipitsin et al <i>Cancer Cell</i> 2007
Luminal	ERBB3	NM_001982	V-erb-b2 erythroblastic leukemia viral oncogene homolog 3 (avian)	Jones et al <i>Cancer Res</i> 2004
Luminal*	MYB	NM_005375	V-myb myeloblastosis viral oncogene homolog (avian)	Drabsch et al <i>PNAS</i> 2007
Basal	VIM	NM_003380	Vimentin	Shipitsin et al <i>Cancer Cell</i> 2007
Luminal	XBP1	NM_005080	X-box binding protein 1	Shipitsin et al <i>Cancer Cell</i> 2007
Basal	TP63	NM_003722	Tumor protein p63	Reis-Filho et al <i>Cancer</i> 2003
Luminal/Stem	EPCAM	NM_002354	Epithelial cell adhesion molecule	Gudjonsson et al <i>Genes Dev</i> 2002

* Expression associated with tumor subtypes (luminal or basal) as not examined in normal cells

Oncomine = genes selected from the correlation gene lists with statistical significance for basal or ER+ luminal tumor subtypes

Supplementary Table 5: Primer sequences used for Quantitative Real Time PCR

Gene		Sequence	Reference
sFRP1	F	ATG CAG TTC TTC GGC TTC TAC T	
	R	AGG GAG GAC ACA CCG TTG TG	
Lrp6	F	CCC ATG CCC CTG GTT CTA CT	
	R	CCA AGC CAC AGG GAT ACA GT	
Slug	F	GCA TTT CTT CAC TCC GAA GC	
	R	TGA ATT CCA TGC TCT TGC AG	
Twist	F	GGA GTC CGC AGT CTT ACG AG	Yang et al; Cell 2004 (Ref #47)
	R	TCT GGA GGA CCT GGT AGA GG	Yang et al; Cell 2004 (Ref #47)
WISP2	F	ATA TTA ACA CGC TGC CTG GTC	
	R	TGT GTG CCT TCT GTT CAT CCT	
FZD9	F	TCA AGG TCA GGC AAG TGA GCA	
	R	AGC TTC CAG AGG AAC GCA ACA	
Lrp5	F	CTC CCT CGA GAC CAA TAA CAA C	
	R	GTG AGT AGA GGG CAC TCA GGA T	
HOXD4	F	AAC ACT AAA GGC AGG TCA TCG T	
	R	GGG TCC CCA CTT CTA TAA GGT C	
GAPDH	F	GAG TCA ACG GAT TTG GTC GT	
	R	GAC AAG CTT CCC GTT CTC AG	
Axin 2	F	ACA TGA TGG AAT CAA TCT GCT G	
	R	ATC AAG ACG GTG CTT ACC TGT T	
RXRA	F	TTA AGA TGC TTT GGA GCA GAC A	
	R	CGA AGC TTT CAC CTC AAT CTC T	
TIMP1	F	ATA CTT CCA CAG GTC CCA CAA C	
	R	AGC CAA CAG TGT AGG TCT TGG T	
HUNK	F	GGC AAA GTG CCC TGT AAT GT	
	R	AGC AGA GGC TGT CCT GGA T	
DVL2	F	GCC TTT TTG GGG GTT AAA ATA G	
	R	TAA CTG GAG GAG GAG GTC ACA T	
DKK1	F	CAT CAG ACT GTG CCT CAG GA	
	R	CCA CAG TAA CAA CGC TGG AA	