

SUPPLEMENTARY MATERIALS

Variations in the Progranulin Gene Affect Global Gene Expression in Frontotemporal Lobar Degeneration

Supplementary Table 1. Transcripts showing differential expression in FTL-D-U compared to normal controls.

ID	P.Value	FC (Dis/Norm)	Gene Symbol	Gene Name
209292_at	4.36E-06	4.5806	ID4	INHIBITOR OF DNA BINDING 4, DOMINANT NEGATIVE HELIX-LOOP-HELIX PROTEIN
204719_at	1.36E-05	4.5518	ABCA8	ATP-BINDING CASSETTE, SUB-FAMILY A (ABC1), MEMBER 8
221841_s_at	1.92E-05	4.2471	KLF4	KRUPPEL-LIKE FACTOR 4 (GUT)
206101_at	4.23E-04	4.1557	ECM2	EXTRACELLULAR MATRIX PROTEIN 2, FEMALE ORGAN AND ADIPOCYTE SPECIFIC
209047_at	3.76E-04	4.1472	AQP1	AQUAPORIN 1 (COLTON BLOOD GROUP)
205856_at	4.33E-04	4.0672	SLC14A1	SOLUTE CARRIER FAMILY 14 (UREA TRANSPORTER), MEMBER 1 (KIDD BLOOD GROU...
208451_s_at	3.50E-05	4.0529	C4A/C4B	COMPLEMENT COMPONENT 4A (RODGERS BLOOD GROUP)
205907_s_at	4.59E-04	4.0307	OMD	OSTEOMODULIN
211896_s_at	1.05E-04	3.8509	DCN	DECORIN
205608_s_at	2.47E-06	3.6276	ANGPT1	ANGIOPOIETIN 1
209335_at	5.73E-04	3.4846	DCN	DECORIN
214428_x_at	1.81E-04	3.3938	C4A/C4B	COMPLEMENT COMPONENT 4A (RODGERS BLOOD GROUP)
211813_x_at	2.04E-04	3.1688	DCN	DECORIN
207542_s_at	3.87E-04	3.1580	AQP1	AQUAPORIN 1 (COLTON BLOOD GROUP)
218418_s_at	1.36E-05	3.1493	ANKRD25	ANKYRIN REPEAT DOMAIN 25
204457_s_at	9.84E-04	3.1478	GAS1	GROWTH ARREST-SPECIFIC 1
201893_x_at	2.23E-04	3.1145	DCN	DECORIN
217678_at	4.70E-04	3.0599	SLC7A11	SOLUTE CARRIER FAMILY 7, (CATIONIC AMINO ACID TRANSPORTER, Y+ SYSTEM) ...
213110_s_at	5.25E-05	3.0167	COL4A5	COLLAGEN, TYPE IV, ALPHA 5 (ALPORT SYNDROME)
213592_at	8.44E-04	3.0154	AGTRL1	ANGIOTENSIN II RECEPTOR-LIKE 1
215646_s_at	7.38E-06	2.9871	CSPG2	CHONDROITIN SULFATE PROTEOGLYCAN 2 (VERSICAN)
203042_at	3.14E-05	2.9759	LAMP2	LYSOSOMAL-ASSOCIATED MEMBRANE PROTEIN 2
218901_at	2.09E-04	2.9630	PLSCR4	PHOSPHOLIPID SCRAMBLASE 4
218162_at	2.71E-04	2.9477	OLFML3	OLFACTOMEDIN-LIKE 3
218236_s_at	1.26E-04	2.9247	PRKD3	PROTEIN KINASE D3
211571_s_at	1.78E-05	2.9168	CSPG2	CHONDROITIN SULFATE PROTEOGLYCAN 2 (VERSICAN)
201525_at	2.92E-07	2.9138	APOD	APOLIPOPROTEIN D
203799_at	4.62E-05	2.8994	CD302	CD302 ANTIGEN
201427_s_at	1.56E-04	2.8754	SEPP1	SELENOPROTEIN P, PLASMA, 1
211538_s_at	1.60E-04	2.8710	HSPA2	HEAT SHOCK 70KDA PROTEIN 2
213388_at	8.74E-05	2.8569	PDE4DIP	PHOSPHODIESTERASE 4D INTERACTING PROTEIN (MYOMEGALIN)
210473_s_at	3.93E-05	2.8472	GPR125	G PROTEIN-COUPLED RECEPTOR 125
221731_x_at	7.29E-05	2.7808	CSPG2	CHONDROITIN SULFATE PROTEOGLYCAN 2 (VERSICAN)
204963_at	3.82E-05	2.7622	SSPN	SARCOSPAN (KRAS ONCOGENE-ASSOCIATED GENE)
204620_s_at	7.32E-05	2.7428	CSPG2	CHONDROITIN SULFATE PROTEOGLYCAN 2 (VERSICAN)
209988_s_at	6.47E-04	2.7323	ASCL1	ACHAETE-SCUTE COMPLEX-LIKE 1 (DROSOPHILA)

204223_at	2.08E-04	2.7064	PRELP	PROLINE/ARGININE-RICH END LEUCINE-RICH REPEAT PROTEIN
209369_at	4.93E-04	2.7027	ANXA3	ANNEXIN A3
206100_at	8.47E-04	2.6914	CPM	CARBOXYPEPTIDASE M
213397_x_at	1.26E-04	2.6885	RNASE4	RIBONUCLEASE, RNASE A FAMILY, 4
202295_s_at	4.36E-05	2.6862	CTSH	CATHEPSIN H
203041_s_at	1.26E-04	2.6765	LAMP2	LYSOSOMAL-ASSOCIATED MEMBRANE PROTEIN 2
200665_s_at	1.73E-04	2.6635	SPARC	SECRETED PROTEIN, ACIDIC, CYSTEINE-RICH (OSTEONECTIN)
218706_s_at	2.94E-04	2.6610	GRAMD3	GRAM DOMAIN CONTAINING 3
204731_at	2.82E-04	2.6556	TGFBR3	TRANSFORMING GROWTH FACTOR, BETA RECEPTOR III (BETAGLYCAN, 300KDA)
205932_s_at	3.70E-04	2.6328	MSX1	MSH HOMEBOX HOMOLOG 1 (DROSOPHILA)
204273_at	7.15E-04	2.6075	EDNRB	ENDOTHELIN RECEPTOR TYPE B
213056_at	3.40E-04	2.5928	FRMD4B	FERM DOMAIN CONTAINING 4B
212077_at	7.10E-04	2.5917	CALD1	CALDESMON 1
205577_at	5.11E-05	2.5914	PYGM	PHOSPHORYLASE, GLYCOGEN; MUSCLE (MCARDLE SYNDROME, GLYCOGEN STORAGE DI...
210906_x_at	1.11E-04	2.5777	AQP4	AQUAPORIN 4
202085_at	7.75E-05	2.5525	TJP2	TIGHT JUNCTION PROTEIN 2 (ZONA OCCLUDENS 2)
205173_x_at	1.96E-04	2.5469	CD58	CD58 ANTIGEN, (LYMPHOCYTE FUNCTION-ASSOCIATED ANTIGEN 3)
201792_at	5.05E-04	2.5425	AEBP1	AE BINDING PROTEIN 1
211986_at	5.28E-04	2.5188	AHNAK	AHNAK NUCLEOPROTEIN (DESMOYOKIN)
209108_at	2.49E-05	2.5187	TSPAN6	TETRASPANIN 6
219167_at	3.31E-04	2.5041	RASL12	RAS-LIKE, FAMILY 12
203903_s_at	6.21E-05	2.5016	HEPH	HEPHAESTIN
209154_at	5.21E-05	2.4842	TAX1BP3	TAX1 (HUMAN T-CELL LEUKEMIA VIRUS TYPE I) BINDING PROTEIN 3
201667_at	2.12E-04	2.4832	GJA1	GAP JUNCTION PROTEIN, ALPHA 1, 43KDA (CONNEXIN 43)
205316_at	6.14E-04	2.4658	SLC15A2	SOLUTE CARRIER FAMILY 15 (H+/PEPTIDE TRANSPORTER), MEMBER 2
221950_at	7.40E-05	2.4650	EMX2	EMPTY SPIRACLES HOMOLOG 2 (DROSOPHILA)
213075_at	2.81E-04	2.4551	OLFML2A	OLFACTOMEDIN-LIKE 2A
209987_s_at	7.77E-04	2.4464	ASCL1	ACHAETE-SCUTE COMPLEX-LIKE 1 (DROSOPHILA)
209348_s_at	2.68E-05	2.4430	MAF	V-MAF MUSCULOAPONEUROTIC FIBROSARCOMA ONCOGENE HOMOLOG (AVIAN)
204619_s_at	3.57E-04	2.4001	CSPG2	CHONDROITIN SULFATE PROTEOGLYCAN 2 (VERSICAN)
201753_s_at	8.62E-04	2.3951	ADD3	ADDUCIN 3 (GAMMA)
214203_s_at	8.81E-05	2.3739	PRODH	PROLINE DEHYDROGENASE (OXIDASE) 1
221024_s_at	2.94E-04	2.3709	SLC2A10	SOLUTE CARRIER FAMILY 2 (FACILITATED GLUCOSE TRANSPORTER), MEMBER 10
209651_at	8.48E-04	2.3697	TGFB111	TRANSFORMING GROWTH FACTOR BETA 1 INDUCED TRANSCRIPT 1
211959_at	6.01E-04	2.3669	IGFBP5	INSULIN-LIKE GROWTH FACTOR BINDING PROTEIN 5
214129_at	9.25E-04	2.3597	PDE4DIP	PHOSPHODIESTERASE 4D INTERACTING PROTEIN (MYOMEGALIN)
211663_x_at	1.03E-05	2.3553	PTGDS	PROSTAGLANDIN D2 SYNTHASE 21KDA (BRAIN)
222240_s_at	1.20E-04	2.3300	ISYNA1	MYO-INOSITOL 1-PHOSPHATE SYNTHASE A1
208623_s_at	9.37E-05	2.3293	VIL2	VILLIN 2 (EZRIN)
204646_at	7.36E-04	2.3222	DPYD	DIHYDROPYRIMIDINE DEHYDROGENASE

212667_at	5.19E-04	2.3207	SPARC	SECRETED PROTEIN, ACIDIC, CYSTEINE-RICH (OSTEONECTIN)
211967_at	7.18E-04	2.3163	TMEM123	TRANSMEMBRANE PROTEIN 123
212522_at	4.78E-04	2.3104	PDE8A	PHOSPHODIESTERASE 8A
209656_s_at	2.02E-05	2.2966	TMEM47	TRANSMEMBRANE PROTEIN 47
205957_at	3.04E-05	2.2851	PLXNB3	PLEXIN B3
202036_s_at	6.91E-04	2.2730	SFRP1	SECRETED FRIZZLED-RELATED PROTEIN 1
204400_at	2.13E-04	2.2651	EFS	EMBRYONAL FYN-ASSOCIATED SUBSTRATE
205609_at	6.49E-04	2.2634	ANGPT1	ANGIOPOIETIN 1
203705_s_at	5.75E-04	2.2616	FZD7	FRIZZLED HOMOLOG 7 (DROSOPHILA)
202661_at	1.33E-04	2.2614	ITPR2	INOSITOL 1,4,5-TRIPHOSPHATE RECEPTOR, TYPE 2
215073_s_at	3.79E-04	2.2382	NR2F2	NUCLEAR RECEPTOR SUBFAMILY 2, GROUP F, MEMBER 2
212262_at	1.27E-04	2.2222	QKI	QUAKING HOMOLOG, KH DOMAIN RNA BINDING (MOUSE)
218304_s_at	4.89E-04	2.2150	OSBPL11	HYPOTHETICAL PROTEIN FLJ13164
214433_s_at	5.29E-04	2.2097	SELENBP1	SELENIUM BINDING PROTEIN 1
202724_s_at	4.60E-05	2.2094	FOXO1A	FORKHEAD BOX O1A (RHABDOMYOSARCOMA)
219895_at	1.69E-04	2.2044	FAM70A	FAMILY WITH SEQUENCE SIMILARITY 70, MEMBER A
213392_at	6.40E-05	2.1965	MGC35048	HYPOTHETICAL PROTEIN MGC35048
203295_s_at	1.61E-05	2.1918	ATP1A2	ATPASE, NA+/K+ TRANSPORTING, ALPHA 2 (+) POLYPEPTIDE
209341_s_at	2.61E-04	2.1860	IKBKB	INHIBITOR OF KAPPA LIGHT POLYPEPTIDE GENE ENHANCER IN B-CELLS, KINASE ...
219304_s_at	9.15E-04	2.1815	PDGFD	PLATELET DERIVED GROWTH FACTOR D
212698_s_at	3.94E-04	2.1793	10-Sep	SEPTIN 10
211726_s_at	6.54E-04	2.1768	FMO2	FLAVIN CONTAINING MONOOXYGENASE 2
205594_at	6.45E-04	2.1748	ZNF652	ZINC FINGER PROTEIN 652
221623_at	2.94E-04	2.1706	BCAN	BREVICAN
212096_s_at	5.32E-04	2.1677	MTUS1	MITOCHONDRIAL TUMOR SUPPRESSOR 1
203704_s_at	7.47E-04	2.1623	RREB1	RAS RESPONSIVE ELEMENT BINDING PROTEIN 1
201131_s_at	5.90E-04	2.1607	CDH1	CADHERIN 1, TYPE 1, E-CADHERIN (EPITHELIAL)
203723_at	7.26E-04	2.1577	ITPKB	INOSITOL 1,4,5-TRISPHOSPHATE 3-KINASE B
204112_s_at	2.52E-04	2.1496	HNMT	HISTAMINE N-METHYLTRANSFERASE
201752_s_at	8.87E-04	2.1444	ADD3	ADDUCIN 3 (GAMMA)
218816_at	4.08E-04	2.1386	LRRC1	LEUCINE RICH REPEAT CONTAINING 1
211317_s_at	3.33E-04	2.1307	CFLAR	CASP8 AND FADD-LIKE APOPTOSIS REGULATOR
200923_at	8.06E-04	2.1298	LGALS3BP	LECTIN, GALACTOSIDE-BINDING, SOLUBLE, 3 BINDING PROTEIN
203296_s_at	3.27E-05	2.1293	ATP1A2	ATPASE, NA+/K+ TRANSPORTING, ALPHA 2 (+) POLYPEPTIDE
212187_x_at	1.61E-05	2.1282	PTGDS	PROSTAGLANDIN D2 SYNTHASE 21KDA (BRAIN)
212397_at	9.82E-04	2.1245	RDX	RADIXIN
203501_at	4.18E-05	2.1236	PGCP	PLASMA GLUTAMATE CARBOXYPEPTIDASE
202173_s_at	6.28E-05	2.1180	ZNF161	ZINC FINGER PROTEIN 161
209684_at	7.72E-04	2.1153	RIN2	RAS AND RAB INTERACTOR 2
211748_x_at	1.43E-05	2.1109	PTGDS	PROSTAGLANDIN D2 SYNTHASE 21KDA (BRAIN)
204428_s_at	2.40E-04	2.0968	LCAT	LECITHIN-CHOLESTEROL ACYLTRANSFERASE
208430_s_at	2.46E-04	2.0922	DTNA	DYSTROBREVIN, ALPHA
208712_at	4.69E-04	2.0920	CCND1	CYCLIN D1

205882_x_at	7.15E-04	2.0911	ADD3	ADDUCIN 3 (GAMMA)
213069_at	2.22E-05	2.0835	HEG1	HEG HOMOLOG 1 (ZEBRAFISH)
218084_x_at	9.87E-04	2.0830	FXYD5	FXYD DOMAIN CONTAINING ION TRANSPORT REGULATOR 5
221748_s_at	3.25E-04	2.0803	TNS1	TENSIN 1
201034_at	8.27E-04	2.0770	ADD3	ADDUCIN 3 (GAMMA)
200821_at	1.45E-04	2.0762	LAMP2	LYSOSOMAL-ASSOCIATED MEMBRANE PROTEIN 2
212122_at	5.81E-04	2.0712	RHOQ	RAS HOMOLOG GENE FAMILY, MEMBER Q
202609_at	9.65E-04	2.0622	EPS8	EPIDERMAL GROWTH FACTOR RECEPTOR PATHWAY SUBSTRATE 8
208789_at	4.79E-04	2.0608	PTRF	POLYMERASE I AND TRANSCRIPT RELEASE FACTOR
201983_s_at	6.71E-04	2.0572	EGFR	EPIDERMAL GROWTH FACTOR RECEPTOR (ERYTHROBLASTIC LEUKEMIA VIRAL (V-ERB...
203845_at	9.27E-04	2.0518	PCAF	P300/CBP-ASSOCIATED FACTOR
218700_s_at	1.26E-05	2.0478	RAB7L1	RAB7, MEMBER RAS ONCOGENE FAMILY-LIKE 1
209496_at	2.73E-04	2.0476	RARRES2	RETINOIC ACID RECEPTOR RESPONDER (TAZAROTENE INDUCED) 2
206058_at	8.31E-04	2.0456	SLC6A12	SOLUTE CARRIER FAMILY 6 (NEUROTRANSMITTER TRANSPORTER, BETAINE/GABA), ...
209655_s_at	3.56E-05	2.0388	TMEM47	TRANSMEMBRANE PROTEIN 47
213578_at	1.87E-04	2.0356	BMPR1A	BONE MORPHOGENETIC PROTEIN RECEPTOR, TYPE IA
218454_at	3.34E-04	2.0247	FLJ22662	HYPOTHETICAL PROTEIN FLJ22662
203540_at	7.18E-04	2.0241	GFAP	GLIAL FIBRILLARY ACIDIC PROTEIN
203932_at	9.17E-04	2.0232	HLA-DMB	MAJOR HISTOCOMPATIBILITY COMPLEX, CLASS II, DM BETA
218248_at	9.16E-04	2.0185	FAM111A	FAMILY WITH SEQUENCE SIMILARITY 111, MEMBER A
208937_s_at	6.78E-04	2.0158	ID1	INHIBITOR OF DNA BINDING 1, DOMINANT NEGATIVE HELIX-LOOP-HELIX PROTEIN
211862_x_at	8.22E-04	2.0099	CFLAR	CASP8 AND FADD-LIKE APOPTOSIS REGULATOR
215807_s_at	2.71E-05	2.0045	PLXNB1	PLEXIN B1
213479_at	7.64E-04	0.1994	NPTX2	NEURONAL PENTRAXIN II
207768_at	5.95E-05	0.2053	EGR4	EARLY GROWTH RESPONSE 4
206115_at	2.67E-05	0.2189	EGR3	EARLY GROWTH RESPONSE 3
219697_at	3.09E-04	0.2375	HS3ST2	HEPARAN SULFATE (GLUCOSAMINE) 3-O-SULFOTRANSFERASE 2
216086_at	1.08E-04	0.2523	SV2C	SYNAPTIC VESICLE GLYCOPROTEIN 2C
211616_s_at	3.67E-04	0.2825	HTR2A	5-HYDROXYTRYPTAMINE (SEROTONIN) RECEPTOR 2A
218625_at	3.67E-04	0.3156	NRN1	NEURITIN 1
220794_at	1.34E-04	0.3343	GREM2	GREMLIN 2, CYSTEINE KNOT SUPERFAMILY, HOMOLOG (XENOPUS LAEVIS)
210090_at	9.41E-04	0.3535	ARC	ACTIVITY-REGULATED CYTOSKELETON-ASSOCIATED PROTEIN
207135_at	8.85E-04	0.3617	HTR2A	5-HYDROXYTRYPTAMINE (SEROTONIN) RECEPTOR 2A
205586_x_at	1.51E-04	0.3690	VGF	VGF NERVE GROWTH FACTOR INDUCIBLE
201693_s_at	9.81E-04	0.3815	EGR1	EARLY GROWTH RESPONSE 1
201694_s_at	4.98E-04	0.3888	EGR1	EARLY GROWTH RESPONSE 1
210227_at	1.49E-04	0.3997	DLGAP2	DISCS, LARGE (DROSOPHILA) HOMOLOG-ASSOCIATED PROTEIN 2
206161_s_at	5.14E-04	0.4151	SYT5	SYNAPTOTAGMIN V
204506_at	9.89E-04	0.4154	PPP3R1	PROTEIN PHOSPHATASE 3 (FORMERLY 2B), REGULATORY SUBUNIT B, 19KDA, ALPH...

205721_at	2.08E-06	0.4201	GFRA2	GDNF FAMILY RECEPTOR ALPHA 2
204945_at	6.75E-04	0.4223	PTPRN	PROTEIN TYROSINE PHOSPHATASE, RECEPTOR TYPE, N
207548_at	5.98E-04	0.4246	GRM7	GLUTAMATE RECEPTOR, METABOTROPIC 7
214078_at	1.63E-04	0.4254	PAK3	P21 (CDKN1A)-ACTIVATED KINASE 3
221874_at	1.89E-04	0.4309	KIAA1324	KIAA1324
59697_at	6.90E-05	0.4384	RAB15	RAB15, MEMBER RAS ONCOGENE FAMILY
205744_at	8.39E-04	0.4412	DOC2A	DOUBLE C2-LIKE DOMAINS, ALPHA
204592_at	3.64E-04	0.4499	DLG4	DISCS, LARGE HOMOLOG 4 (DROSOPHILA)
207869_s_at	2.45E-04	0.4503	CACNA1G	CALCIUM CHANNEL, VOLTAGE-DEPENDENT, ALPHA 1G SUBUNIT
220246_at	2.80E-04	0.4508	CAMK1D	CALCIUM/CALMODULIN-DEPENDENT PROTEIN KINASE ID
208359_s_at	2.22E-04	0.4508	KCNJ4	POTASSIUM INWARDLY-RECTIFYING CHANNEL, SUBFAMILY J, MEMBER 4
205738_s_at	8.10E-06	0.4518	FABP3	FATTY ACID BINDING PROTEIN 3, MUSCLE AND HEART (MAMMARY-DERIVED GROWTH...
212473_s_at	7.03E-04	0.4530	MICAL2	MICROTUBULE ASSOCIATED MONOOXYGENASE, CALPONIN AND LIM DOMAIN CONTAININ...
207767_s_at	4.60E-04	0.4570	EGR4	EARLY GROWTH RESPONSE 4
221810_at	2.52E-05	0.4595	RAB15	RAB15, MEMBER RAS ONCOGENE FAMILY
207035_at	3.41E-04	0.4605	SLC30A3	SOLUTE CARRIER FAMILY 30 (ZINC TRANSPORTER), MEMBER 3
206281_at	1.57E-04	0.4657	ADCYAP1	ADENYLATE CYCLASE ACTIVATING POLYPEPTIDE 1 (PITUITARY)
204513_s_at	9.65E-04	0.4757	ELMO1	ENGULFMENT AND CELL MOTILITY 1
204679_at	4.10E-04	0.4775	KCNK1	POTASSIUM CHANNEL, SUBFAMILY K, MEMBER 1
206322_at	4.76E-04	0.4781	SYN3	SYNAPSIN III
210380_s_at	8.06E-05	0.4799	CACNA1G	CALCIUM CHANNEL, VOLTAGE-DEPENDENT, ALPHA 1G SUBUNIT
219894_at	1.45E-04	0.4809	MAGEL2	MAGE-LIKE 2
202178_at	8.86E-04	0.4823	PRKCZ	PROTEIN KINASE C, ZETA
203911_at	4.95E-04	0.4841	RAP1GA1	RAP1, GTPASE ACTIVATING PROTEIN 1
215010_s_at	3.51E-04	0.4974	BRSK2	BR SERINE/THREONINE KINASE 2
212448_at	7.25E-05	0.4978	NEDD4L	NEURAL PRECURSOR CELL EXPRESSED, DEVELOPMENTALLY DOWN-REGULATED 4-LIKE
207693_at	9.09E-04	0.4997	CACNB4	CALCIUM CHANNEL, VOLTAGE-DEPENDENT, BETA 4 SUBUNIT

16 FTLD-U cases were compared to 8 normal controls on Affymetrix U133A microarrays. A statistical cutoff of $p < 0.001$ was used to identify genes with differential expression, which were then ranked based on fold change (FC, disease/normal). All genes with fold change > 2 , identified by GeneSymbol and name, are shown for frontal cortex samples.

Supplementary Table 2. Number of gene changes found in present study compared to previous microarray studies of human postmortem cortex samples in neurodegenerative disease.

Comparison Study	AD⁴⁶	sCJD⁴⁷	Prior FTLD-U⁵⁸	ALS (Cortex)⁴⁸
Upregulated probes in comparison study (% Total probes)	1572 (7.06%)	12 (0.05%)	60 (0.13%)	17 (0.09%)
Downregulated probes in comparison study (% Total probes)	1126 (5.05%)	275 (1.23%)	518 (1.10%)	40 (0.2%)
Upregulated probes in present study – All FTLD-U (% Total probes)	2289 (10.28%)	196 (0.88%)	321 (1.44%)	57 (0.29%)
Downregulated probes in present study – All FTLD-U (% Total probes)	2637 (11.84%)	74 (0.33%)	282 (1.27%)	210 (0.94%)
Upregulated probes in present study – GRN+ only (% Total probes)	3688 (16.56%)	507 (2.28%)	658 (2.95%)	579 (2.60%)
Downregulated probes in present study – GRN+ only (% Total probes)	3248 (14.58%)	688 (3.09%)	767 (3.44%)	732 (3.29%)
Number of samples	22 disease, 9 control	15 disease, 5 control	6 disease, 6 control	11 disease, 9 control
Study size	Larger than present	Comparable to present	Smaller than present	Comparable to present
Statistics, cutoffs used	Nominal P<0.05	FDR<5%, FC>2	Benjamini P<0.05, FC>2	Benjamini P<0.05, FC>2
Total probes on array	22,000+	22,000+	47,000+	19,431

Using the statistical conditions employed in the comparison study,^{46-48, 58} we reanalyzed our frontal cortex dataset. AD = Alzheimer's Disease. sCJD = sporadic Creutzfeldt-Jacob disease. ALS = amyotrophic lateral sclerosis. FDR = false discovery rate. FC = fold change. Benjamini = Benjamini-Hochberg correction for multiple hypothesis testing.

Supplementary Table 3. Transcripts showing differential expression in *GRN+* FTL-D-U compared to normal controls.

ID	P.Value	FC	Gene Symbol	Gene Name
204719_at	9.67E-05	6.3989	ABCA8	ATP-BINDING CASSETTE, SUB-FAMILY A (ABC1), MEMBER 8
205907_s_at	1.84E-04	6.0441	OMD	OSTEOMODULIN
221841_s_at	1.12E-04	5.6157	KLF4	KRUPPEL-LIKE FACTOR 4 (GUT)
211896_s_at	6.57E-05	5.3074	DCN	DECORIN
202409_at	2.05E-04	5.3061	C11ORF43	CHROMOSOME 11 OPEN READING FRAME 43
209335_at	2.45E-04	5.1019	DCN	DECORIN
209292_at	1.28E-04	5.0969	ID4	INHIBITOR OF DNA BINDING 4, DOMINANT NEGATIVE HELIX-LOOP-HELIX PROTEIN
206101_at	1.83E-04	5.0700	ECM2	EXTRACELLULAR MATRIX PROTEIN 2, FEMALE ORGAN AND ADIPOCYTE SPECIFIC
206373_at	8.05E-05	4.5235	ZIC1	ZIC FAMILY MEMBER 1 (ODD-PAIRED HOMOLOG, DROSOPHILA)
211742_s_at	8.28E-05	4.4841	EVI2B	ECOTROPIC VIRAL INTEGRATION SITE 2B
206100_at	3.58E-05	4.3504	CPM	CARBOXYPEPTIDASE M
204457_s_at	9.77E-04	4.2875	GAS1	GROWTH ARREST-SPECIFIC 1
211813_x_at	5.88E-05	4.2649	DCN	DECORIN
201893_x_at	3.97E-05	4.2531	DCN	DECORIN
213975_s_at	9.53E-04	4.2301	LILRB1/LYZ	LEUKOCYTE IMMUNOGLOBULIN-LIKE RECEPTOR, SUBFAMILY B; LYSOZYME (RENAL AMYLOIDOSIS)
205608_s_at	2.48E-07	4.2236	ANGPT1	ANGIOPOIETIN 1
218418_s_at	1.60E-06	4.2142	ANKRD25	ANKYRIN REPEAT DOMAIN 25
202403_s_at	4.28E-04	4.2031	COL1A2	COLLAGEN, TYPE I, ALPHA 2
208451_s_at	1.34E-04	4.1915	C4A/C4B	COMPLEMENT COMPONENT 4A (RODGERS BLOOD GROUP)
203042_at	2.14E-05	4.1637	LAMP2	LYSOSOMAL-ASSOCIATED MEMBRANE PROTEIN 2
203186_s_at	2.78E-04	4.1131	S100A4	S100 CALCIUM BINDING PROTEIN A4 (CALCIUM PROTEIN, CALVASCULIN, METASTA...
220467_at	2.76E-04	4.0945	FLJ21272	HYPOTHETICAL PROTEIN FLJ21272
213388_at	6.10E-05	4.0204	PDE4DIP	PHOSPHODIESTERASE 4D INTERACTING PROTEIN (MYOMEGALIN)
201427_s_at	1.72E-04	3.9315	SEPP1	SELENOPROTEIN P, PLASMA, 1
214428_x_at	1.51E-04	3.9157	C4A/C4B	COMPLEMENT COMPONENT 4A (RODGERS BLOOD GROUP)
204324_s_at	2.10E-04	3.8230	GOLPH4	GOLGI PHOSPHOPROTEIN 4
204223_at	1.41E-04	3.7802	PRELP	PROLINE/ARGININE-RICH END LEUCINE-RICH REPEAT PROTEIN
49452_at	1.90E-04	3.7720	ACACB	ACETYL-COENZYME A CARBOXYLASE BETA
209369_at	6.77E-04	3.6915	ANXA3	ANNEXIN A3
221731_x_at	4.13E-05	3.6023	CSPG2	CHONDROITIN SULFATE PROTEOGLYCAN 2 (VERSICAN)
213056_at	6.76E-05	3.5538	FRMD4B	FERM DOMAIN CONTAINING 4B
221698_s_at	6.88E-04	3.5378	CLEC7A	C-TYPE LECTIN DOMAIN FAMILY 7, MEMBER A
213592_at	3.73E-04	3.5042	AGTRL1	ANGIOTENSIN II RECEPTOR-LIKE 1
215646_s_at	4.06E-06	3.4957	CSPG2	CHONDROITIN SULFATE PROTEOGLYCAN 2 (VERSICAN)
201525_at	1.95E-06	3.4671	APOD	APOLIPOPROTEIN D
203799_at	2.25E-04	3.4349	CD302	CD302 ANTIGEN
206307_s_at	5.33E-04	3.4225	FOXD1	FORKHEAD BOX D1
217985_s_at	5.35E-05	3.4084	BAZ1A	BROMODOMAIN ADJACENT TO ZINC FINGER DOMAIN, 1A

201141_at	5.46E-04	3.4029	GPNMB	GLYCOPROTEIN (TRANSMEMBRANE) NMB
209987_s_at	8.27E-05	3.4005	ASCL1	ACHAETE-SCUTE COMPLEX-LIKE 1 (DROSOPHILA)
218236_s_at	3.73E-04	3.4001	PRKD3	PROTEIN KINASE D3
211571_s_at	7.67E-06	3.3984	CSPG2	CHONDROITIN SULFATE PROTEOGLYCAN 2 (VERSICAN)
218162_at	2.91E-04	3.3743	OLFML3	OLFACTOMEDIN-LIKE 3
204620_s_at	4.72E-05	3.3659	CSPG2	CHONDROITIN SULFATE PROTEOGLYCAN 2 (VERSICAN)
203041_s_at	4.64E-04	3.3586	LAMP2	LYSOSOMAL-ASSOCIATED MEMBRANE PROTEIN 2
201617_x_at	7.21E-04	3.3145	CALD1	CALDESMON 1
214129_at	4.19E-05	3.3064	PDE4DIP	PHOSPHODIESTERASE 4D INTERACTING PROTEIN (MYOMEGALIN)
222240_s_at	2.14E-05	3.2787	ISYNA1	MYO-INOSITOL 1-PHOSPHATE SYNTHASE A1
213158_at	9.53E-04	3.2720	NA	.CONSENSUS INCLUDES GB:AA045174 /FEA=EST /DB_XREF=GI:1523376 /DB_XREF=
206637_at	1.26E-04	3.2580	P2RY14	PURINERGIC RECEPTOR P2Y, G-PROTEIN COUPLED, 14
203706_s_at	2.33E-04	3.2489	FZD7	FRIZZLED HOMOLOG 7 (DROSOPHILA)
217678_at	8.91E-04	3.2444	SLC7A11	SOLUTE CARRIER FAMILY 7, (CATIONIC AMINO ACID TRANSPORTER, Y+ SYSTEM) ...
211986_at	3.30E-04	3.2028	AHNAK	AHNAK NUCLEOPROTEIN (DESMOYOKIN)
213156_at	4.82E-04	3.1907	NA	.CONSENSUS INCLUDES GB:BG251521 /FEA=EST /DB_XREF=GI:12761337 /DB_XREF
43427_at	1.06E-04	3.1877	ACACB	ACETYL-COENZYME A CARBOXYLASE BETA
205932_s_at	1.41E-04	3.1645	MSX1	MSH HOMEBOX HOMOLOG 1 (DROSOPHILA)
220170_at	9.85E-04	3.1603	FHL5	FOUR AND A HALF LIM DOMAINS 5
211726_s_at	1.08E-04	3.1500	FMO2	FLAVIN CONTAINING MONOOXYGENASE 2
209154_at	2.13E-05	3.1065	TAX1BP3	TAX1 (HUMAN T-CELL LEUKEMIA VIRUS TYPE I) BINDING PROTEIN 3
205173_x_at	3.38E-04	3.0995	CD58	CD58 ANTIGEN, (LYMPHOCYTE FUNCTION-ASSOCIATED ANTIGEN 3)
204646_at	8.80E-04	3.0937	DPYD	DIHYDROPYRIMIDINE DEHYDROGENASE
208965_s_at	7.91E-04	3.0627	IFI16	INTERFERON, GAMMA-INDUCIBLE PROTEIN 16
201280_s_at	4.33E-04	3.0537	DAB2	DISABLED HOMOLOG 2, MITOGEN-RESPONSIVE PHOSPHOPROTEIN (DROSOPHILA)
219167_at	3.79E-04	3.0335	RASL12	RAS-LIKE, FAMILY 12
211959_at	7.79E-04	3.0239	IGFBP5	INSULIN-LIKE GROWTH FACTOR BINDING PROTEIN 5
219602_s_at	9.93E-04	3.0221	FAM38B	FAMILY WITH SEQUENCE SIMILARITY 38, MEMBER B
213075_at	1.99E-04	3.0112	OLFML2A	OLFACTOMEDIN-LIKE 2A
206058_at	4.46E-06	3.0105	SLC6A12	SOLUTE CARRIER FAMILY 6 (NEUROTRANSMITTER TRANSPORTER, BETAINE/GABA), ...
209348_s_at	1.82E-05	2.9977	MAF	V-MAF MUSCULOAPONEUROTIC FIBROSARCOMA ONCOGENE HOMOLOG (AVIAN)
209651_at	6.00E-04	2.9895	TGFB1I1	TRANSFORMING GROWTH FACTOR BETA 1 INDUCED TRANSCRIPT 1
204731_at	7.49E-04	2.9850	TGFBR3	TRANSFORMING GROWTH FACTOR, BETA RECEPTOR III (BETAGLYCAN, 300KDA)
201792_at	5.94E-04	2.9744	AEBP1	AE BINDING PROTEIN 1
201867_s_at	7.02E-05	2.9644	TBL1X	TRANSDUCIN (BETA)-LIKE 1X-LINKED
204619_s_at	2.24E-04	2.9636	CSPG2	CHONDROITIN SULFATE PROTEOGLYCAN 2 (VERSICAN)
200665_s_at	4.32E-04	2.9576	SPARC	SECRETED PROTEIN, ACIDIC, CYSTEINE-RICH (OSTEONECTIN)
205594_at	2.17E-04	2.9567	ZNF652	ZINC FINGER PROTEIN 652
202661_at	1.57E-05	2.9321	ITPR2	INOSITOL 1,4,5-TRIPHOSPHATE RECEPTOR, TYPE 2

202085_at	8.73E-05	2.9248	TJP2	TIGHT JUNCTION PROTEIN 2 (ZONA OCCLUDENS 2)
221748_s_at	1.91E-05	2.9202	TNS1	TENSIN 1
217941_s_at	4.30E-04	2.9172	ERBB2IP	ERBB2 INTERACTING PROTEIN
207826_s_at	1.57E-04	2.8890	ID3	INHIBITOR OF DNA BINDING 3, DOMINANT NEGATIVE HELIX-LOOP-HELIX PROTEIN
202295_s_at	3.35E-04	2.8597	CTSH	CATHEPSIN H
205098_at	8.33E-04	2.8587	CCR1	CHEMOKINE (C-C MOTIF) RECEPTOR 1
205383_s_at	4.78E-04	2.8548	ZBTB20	ZINC FINGER AND BTB DOMAIN CONTAINING 20
202688_at	6.20E-04	2.8451	TNFSF10	TUMOR NECROSIS FACTOR (LIGAND) SUPERFAMILY, MEMBER 10
201616_s_at	3.89E-04	2.8307	CALD1	CALDESMON 1
211481_at	6.90E-04	2.8252	SLCO1A2	SOLUTE CARRIER ORGANIC ANION TRANSPORTER FAMILY, MEMBER 1A2
211317_s_at	1.06E-04	2.8243	CFLAR	CASP8 AND FADD-LIKE APOPTOSIS REGULATOR
203704_s_at	2.56E-04	2.8137	RREB1	RAS RESPONSIVE ELEMENT BINDING PROTEIN 1
207308_at	9.36E-05	2.8083	SLCO1A2	SOLUTE CARRIER ORGANIC ANION TRANSPORTER FAMILY, MEMBER 1A2
207655_s_at	3.82E-04	2.8000	BLNK	B-CELL LINKER
209699_x_at	2.52E-04	2.7813	AKR1C2	ALDO-KETO REDUCTASE FAMILY 1, MEMBER C2 (DIHYDRODIOL DEHYDROGENASE 2; ...
219777_at	1.24E-04	2.7726	GIMAP6	IMMUNE ASSOCIATED NUCLEOTIDE 2
201830_s_at	3.43E-05	2.7715	NET1	NEUROEPITHELIAL CELL TRANSFORMING GENE 1
211862_x_at	3.32E-05	2.7672	CFLAR	CASP8 AND FADD-LIKE APOPTOSIS REGULATOR
203723_at	4.56E-04	2.7640	ITPKB	INOSITOL 1,4,5-TRISPHOSPHATE 3-KINASE B
204963_at	5.89E-04	2.7348	SSPN	SARCOSPAN (KRAS ONCOGENE-ASSOCIATED GENE)
218084_x_at	1.83E-04	2.7335	FXVD5	FXVD DOMAIN CONTAINING ION TRANSPORT REGULATOR 5
208623_s_at	4.70E-04	2.7188	VIL2	VILLIN 2 (EZRIN)
203934_at	9.68E-04	2.7061	KDR	KINASE INSERT DOMAIN RECEPTOR (A TYPE III RECEPTOR TYROSINE KINASE)
202506_at	5.95E-05	2.6945	SSFA2	SPERM SPECIFIC ANTIGEN 2
212698_s_at	4.60E-05	2.6792	10-Sep	SEPTIN 10
209108_at	4.65E-04	2.6786	TSPAN6	TETRASPANIN 6
202609_at	4.67E-04	2.6702	EPS8	EPIDERMAL GROWTH FACTOR RECEPTOR PATHWAY SUBSTRATE 8
204834_at	7.34E-04	2.6641	FGL2	FIBRINOGEN-LIKE 2
203932_at	2.09E-04	2.6616	HLA-DMB	MAJOR HISTOCOMPATIBILITY COMPLEX, CLASS II, DM BETA
209341_s_at	2.24E-04	2.6487	IKBKB	INHIBITOR OF KAPPA LIGHT POLYPEPTIDE GENE ENHANCER IN B-CELLS, KINASE ...
204236_at	6.86E-04	2.6452	FLI1	FRIEND LEUKEMIA VIRUS INTEGRATION 1
202724_s_at	1.06E-04	2.6418	FOXO1A	FORKHEAD BOX O1A (RHABDOMYOSARCOMA)
209684_at	8.22E-04	2.6371	RIN2	RAS AND RAB INTERACTOR 2
212262_at	7.46E-05	2.6242	QKI	QUAKING HOMOLOG, KH DOMAIN RNA BINDING (MOUSE)
208789_at	3.50E-05	2.6217	PTRF	POLYMERASE I AND TRANSCRIPT RELEASE FACTOR
212522_at	6.71E-05	2.6190	PDE8A	PHOSPHODIESTERASE 8A
204151_x_at	8.99E-04	2.6172	AKR1C1	ALDO-KETO REDUCTASE FAMILY 1, MEMBER C1 (DIHYDRODIOL DEHYDROGENASE 1; ...
211653_x_at	2.72E-04	2.6168	AKR1C2	ALDO-KETO REDUCTASE FAMILY 1, MEMBER C2 (DIHYDRODIOL DEHYDROGENASE 2; ...
202173_s_at	1.44E-05	2.6139	ZNF161	ZINC FINGER PROTEIN 161
211316_x_at	2.60E-04	2.6102	CFLAR	CASP8 AND FADD-LIKE APOPTOSIS REGULATOR
201983_s_at	1.48E-04	2.6030	EGFR	EPIDERMAL GROWTH FACTOR RECEPTOR (ERYTHROBLASTIC LEUKEMIA VIRAL (V-ERB...

204061_at	1.48E-04	2.5957	PRKX	PROTEIN KINASE, X-LINKED
209285_s_at	9.22E-04	2.5902	C3ORF63	CHROMOSOME 3 OPEN READING FRAME 63
201131_s_at	6.64E-04	2.5894	CDH1	CADHERIN 1, TYPE 1, E-CADHERIN (EPITHELIAL)
204201_s_at	4.47E-04	2.5748	PTPN13	PROTEIN TYROSINE PHOSPHATASE, NON-RECEPTOR TYPE 13 (APO-1/CD95 (FAS)-A...
218816_at	4.52E-04	2.5724	LRRC1	LEUCINE RICH REPEAT CONTAINING 1
212263_at	1.93E-04	2.5722	QKI	QUAKING HOMOLOG, KH DOMAIN RNA BINDING (MOUSE)
221950_at	5.91E-04	2.5702	EMX2	EMPTY SPIRACLES HOMOLOG 2 (DROSOPHILA)
49306_at	8.35E-04	2.5531	RASSF4	RAS ASSOCIATION (RALGDS/AF-6) DOMAIN FAMILY 4
201829_at	9.09E-05	2.5421	NET1	NEUROEPITHELIAL CELL TRANSFORMING GENE 1
204563_at	7.72E-04	2.5343	SELL	SELECTIN L (LYMPHOCYTE ADHESION MOLECULE 1)
203705_s_at	7.32E-04	2.5328	FZD7	FRIZZLED HOMOLOG 7 (DROSOPHILA)
210906_x_at	2.40E-04	2.5316	AQP4	AQUAPORIN 4
215073_s_at	5.28E-04	2.5304	NR2F2	NUCLEAR RECEPTOR SUBFAMILY 2, GROUP F, MEMBER 2
210276_s_at	1.06E-05	2.5276	TRIOBP	TRIO AND F-ACTIN BINDING PROTEIN
218251_at	3.78E-04	2.5187	MID1IP1	MID1 INTERACTING PROTEIN 1 (GASTRULATION SPECIFIC G12-LIKE (ZEBRAFISH)...
208712_at	5.62E-04	2.5168	CCND1	CYCLIN D1
202171_at	5.15E-05	2.5160	ZNF161	ZINC FINGER PROTEIN 161
209343_at	7.03E-04	2.5026	EFHD1	EF-HAND DOMAIN FAMILY, MEMBER D1
218204_s_at	5.93E-06	2.4950	FYCO1	FYVE AND COILED-COIL DOMAIN CONTAINING 1
214808_at	1.34E-04	2.4894	NA	,CONSENSUS INCLUDES GB:AU147851 /FEA=EST /DB_XREF=GI:11009372 /DB_XREF
203238_s_at	3.71E-05	2.4730	NOTCH3	NOTCH HOMOLOG 3 (DROSOPHILA)
205111_s_at	1.30E-04	2.4627	PLCE1	PHOSPHOLIPASE C, EPSILON 1
203642_s_at	4.92E-04	2.4568	COBLL1	COBL-LIKE 1
210719_s_at	4.61E-04	2.4556	HMG20B	HIGH-MOBILITY GROUP 20B
204428_s_at	7.34E-06	2.4480	LCAT	LECITHIN-CHOLESTEROL ACYLTRANSFERASE
201615_x_at	9.97E-04	2.4385	CALD1	CALDESMON 1
202011_at	2.60E-04	2.4374	TJP1	TIGHT JUNCTION PROTEIN 1 (ZONA OCCLUDENS 1)
202172_at	1.43E-04	2.4352	ZNF161	ZINC FINGER PROTEIN 161
205957_at	7.57E-05	2.4335	PLXNB3	PLEXIN B3
218248_at	2.56E-05	2.4272	FAM111A	FAMILY WITH SEQUENCE SIMILARITY 111, MEMBER A
210983_s_at	1.88E-04	2.4165	MCM7	MCM7 MINICHROMOSOME MAINTENANCE DEFICIENT 7 (S. CEREVISIAE)
218454_at	1.70E-04	2.4161	FLJ22662	HYPOTHETICAL PROTEIN FLJ22662
219371_s_at	9.42E-04	2.4109	KLF2	KRUPPEL-LIKE FACTOR 2 (LUNG)
203295_s_at	4.58E-04	2.4100	ATP1A2	ATPASE, NA+/K+ TRANSPORTING, ALPHA 2 (+) POLYPEPTIDE
202350_s_at	5.19E-04	2.3978	MATN2	MATRILIN 2
208485_x_at	2.47E-04	2.3977	CFLAR	CASP8 AND FADD-LIKE APOPTOSIS REGULATOR
202664_at	1.15E-04	2.3837	WASPIP	WISKOTT-ALDRICH SYNDROME PROTEIN INTERACTING PROTEIN
210757_x_at	9.98E-04	2.3782	DAB2	DISABLED HOMOLOG 2, MITOGEN-RESPONSIVE PHOSPHOPROTEIN (DROSOPHILA)
219779_at	1.94E-04	2.3705	ZFHX4	ZINC FINGER HOMEODOMAIN 4
213236_at	6.35E-04	2.3688	SASH1	SAM AND SH3 DOMAIN CONTAINING 1
204112_s_at	7.86E-04	2.3678	HNMT	HISTAMINE N-METHYLTRANSFERASE
218829_s_at	9.35E-04	2.3543	CHD7	CHROMODOMAIN HELICASE DNA BINDING PROTEIN 7
219255_x_at	7.79E-04	2.3498	IL17RB	INTERLEUKIN 17 RECEPTOR B

AFFX-r2-Ec-bioB-5_at	2.22E-05	2.3488	BIOB	BIOTIN SYNTHESIS, SULFUR INSERTION?
203501_at	1.65E-04	2.3352	PGCP	PLASMA GLUTAMATE CARBOXYPEPTIDASE
AFFX-BioB-5_at	9.66E-06	2.3318	BIOB	BIOTIN SYNTHASE
211663_x_at	3.55E-05	2.3291	PTGDS	PROSTAGLANDIN D2 SYNTHASE 21KDA (BRAIN)
209656_s_at	7.32E-04	2.3270	TMEM47	TRANSMEMBRANE PROTEIN 47
201279_s_at	6.85E-04	2.3267	DAB2	DISABLED HOMOLOG 2, MITOGEN-RESPONSIVE PHOSPHOPROTEIN (DROSOPHILA)
220266_s_at	9.21E-04	2.3266	KLF4	KRUPPEL-LIKE FACTOR 4 (GUT)
205801_s_at	8.35E-05	2.3236	RASGRP3	RAS GUANYL RELEASING PROTEIN 3 (CALCIUM AND DAG-REGULATED)
212494_at	1.78E-04	2.3202	TENC1	TENSIN LIKE C1 DOMAIN CONTAINING PHOSPHATASE (TENSIN 2)
213069_at	3.24E-04	2.3196	HEG1	HEG HOMOLOG 1 (ZEBRAFISH)
213005_s_at	6.87E-04	2.3190	ANKRD15	ANKYRIN REPEAT DOMAIN 15
221496_s_at	1.58E-04	2.3187	TOB2	TRANSDUCER OF ERBB2, 2
202239_at	5.58E-04	2.3136	PARP4	POLY (ADP-RIBOSE) POLYMERASE FAMILY, MEMBER 4
221558_s_at	3.78E-04	2.3058	LOC641518/LEF1	LYMPHOID ENHANCER-BINDING FACTOR 1
204964_s_at	7.45E-04	2.2968	SSPN	SARCOSPAN (KRAS ONCOGENE-ASSOCIATED GENE)
208986_at	7.08E-04	2.2909	TCF12	TRANSCRIPTION FACTOR 12 (HTF4, HELIX-LOOP-HELIX TRANSCRIPTION FACTORS ...)
212345_s_at	5.86E-04	2.2861	CREB3L2	CAMP RESPONSIVE ELEMENT BINDING PROTEIN 3-LIKE 2
206363_at	1.06E-04	2.2843	MAF	V-MAF MUSCULOAPONEUROTIC FIBROSARCOMA ONCOGENE HOMOLOG (AVIAN)
204187_at	6.00E-04	2.2817	GMPR	GUANOSINE MONOPHOSPHATE REDUCTASE
219719_at	3.68E-05	2.2813	HIGD1B	HIG1 DOMAIN FAMILY, MEMBER 1B
203304_at	1.58E-04	2.2746	BAMBI	BMP AND ACTIVIN MEMBRANE-BOUND INHIBITOR HOMOLOG (XENOPUS LAEVIS)
210564_x_at	2.24E-04	2.2743	CFLAR	CASP8 AND FADD-LIKE APOPTOSIS REGULATOR
218424_s_at	2.30E-05	2.2729	STEAP3	STEAP FAMILY MEMBER 3
209496_at	1.02E-04	2.2688	RARRES2	RETINOIC ACID RECEPTOR RESPONDER (TAZAROTENE INDUCED) 2
209906_at	7.76E-04	2.2670	C3AR1	COMPLEMENT COMPONENT 3A RECEPTOR 1
208937_s_at	7.04E-04	2.2662	ID1	INHIBITOR OF DNA BINDING 1, DOMINANT NEGATIVE HELIX-LOOP-HELIX PROTEIN
221527_s_at	3.06E-04	2.2631	PARD3	PAR-3 PARTITIONING DEFECTIVE 3 HOMOLOG (C. ELEGANS)
205609_at	7.16E-04	2.2627	ANGPT1	ANGIOPOIETIN 1
208438_s_at	5.86E-04	2.2596	FGR	GARDNER-RASHEED FELINE SARCOMA VIRAL (V-FGR) ONCOGENE HOMOLOG
209121_x_at	3.87E-04	2.2589	NR2F2	NUCLEAR RECEPTOR SUBFAMILY 2, GROUP F, MEMBER 2
208033_s_at	2.25E-04	2.2559	ATBF1	AT-BINDING TRANSCRIPTION FACTOR 1
41644_at	3.54E-04	2.2526	SASH1	SAM AND SH3 DOMAIN CONTAINING 1
214833_at	7.71E-04	2.2503	TMEM63A	TRANSMEMBRANE PROTEIN 63A
213348_at	3.13E-04	2.2444	CDKN1C	CYCLIN-DEPENDENT KINASE INHIBITOR 1C (P57, KIP2)
212122_at	7.49E-04	2.2362	RHOQ	RAS HOMOLOG GENE FAMILY, MEMBER Q
201209_at	6.30E-05	2.2358	HDAC1	HISTONE DEACETYLASE 1
210166_at	2.65E-04	2.2338	TLR5	TOLL-LIKE RECEPTOR 5
214709_s_at	2.22E-04	2.2311	KTN1/PDIA6	KINECTIN 1 (KINESIN RECEPTOR), PROTEIN DISULFIDE ISOMERASE FAMILY A, MEMBER 6
214693_x_at	3.64E-04	2.2279	NBPF12/KIAA1245/NBPF1	KIAA1245, NEUROBLASTOMA BREAKPOINT FAMILY MEMBER 14, NEUROBLASTOMA BREAKPOINT FAMILY, MEMBER 9

			5/NBPF14/NB PF11/FBPF1/F BPF10/NBPF9	
205859_at	5.51E-04	2.2213	LY86	LYMPHOCYTE ANTIGEN 86
221928_at	1.35E-04	2.2135	ACACB	ACETYL-COENZYME A CARBOXYLASE BETA
209102_s_at	2.79E-04	2.2120	HBP1	HMG-BOX TRANSCRIPTION FACTOR 1
200915_x_at	1.82E-04	2.2110	KTN1/PDIA6	KINECTIN 1 (KINESIN RECEPTOR), PROTEIN DISULFIDE ISOMERASE FAMILY A, MEMBER 6
201785_at	5.71E-04	2.1954	RNASE1	RIBONUCLEASE, RNASE A FAMILY, 1 (PANCREATIC)
217892_s_at	2.74E-04	2.1949	LIMA1	LIM DOMAIN AND ACTIN BINDING 1
203964_at	5.49E-04	2.1920	NMI	N-MYC (AND STAT) INTERACTOR
207169_x_at	1.96E-04	2.1918	DDR1	DISCOIDIN DOMAIN RECEPTOR FAMILY, MEMBER 1
215807_s_at	1.13E-04	2.1888	PLXNB1	PLEXIN B1
218844_at	3.14E-04	2.1874	FLJ20920	HYPOTHETICAL PROTEIN FLJ20920
AFFX- BioDn-5_at	6.20E-05	2.1834	BIOD	BIOTIN SYNTHESIS PROTEIN BIOC
AFFX-r2-Ec- bioB-M_at	3.66E-05	2.1798	BIOB	BIOTIN SYNTHETASE
201150_s_at	3.96E-05	2.1782	TIMP3	TIMP METALLOPEPTIDASE INHIBITOR 3 (SORSBY FUNDUS DYSTROPHY, PSEUDOINFL...
214720_x_at	1.68E-05	2.1744	SEPT10	SEPTIN 10
209119_x_at	2.84E-04	2.1667	NR2F2	NUCLEAR RECEPTOR SUBFAMILY 2, GROUP F, MEMBER 2
210524_x_at	2.61E-04	2.1579	MT1F	METALLOTHIONEIN 1F (FUNCTIONAL)
58780_s_at	1.99E-04	2.1547	FLJ10357	HYPOTHETICAL PROTEIN FLJ10357
203593_at	7.15E-04	2.1533	CD2AP	CD2-ASSOCIATED PROTEIN
219956_at	9.58E-04	2.1463	GALNT6	UDP-N-ACETYL-ALPHA-D- GALACTOSAMINE:POLYPEPTIDE N- ACETYLGALACTOSAMINYLT...
221526_x_at	3.69E-04	2.1463	PARD3	PAR-3 PARTITIONING DEFECTIVE 3 HOMOLOG (C. ELEGANS)
219243_at	4.94E-04	2.1458	GIMAP4	GTPASE, IMAP FAMILY MEMBER 4
210220_at	5.05E-04	2.1426	FZD2	FRIZZLED HOMOLOG 2 (DROSOPHILA)
212398_at	5.26E-05	2.1423	RDX	RADIXIN
203961_at	4.02E-04	2.1404	NEBL	NEBULETTE
200696_s_at	4.18E-04	2.1401	GSN	GELSOLIN (AMYLOIDOSIS, FINNISH TYPE)
209267_s_at	1.22E-04	2.1381	SLC39A8	SOLUTE CARRIER FAMILY 39 (ZINC TRANSPORTER), MEMBER 8
216942_s_at	2.42E-05	2.1361	CD58	CD58 ANTIGEN, (LYMPHOCYTE FUNCTION- ASSOCIATED ANTIGEN 3)
209298_s_at	8.51E-04	2.1320	ITSN1	INTERSECTIN 1 (SH3 DOMAIN PROTEIN)
208683_at	3.93E-04	2.1318	CAPN2	CALPAIN 2, (M/II) LARGE SUBUNIT
209071_s_at	6.13E-04	2.1310	RGS5	REGULATOR OF G-PROTEIN SIGNALLING 5
208430_s_at	6.53E-05	2.1304	DTNA	DYSTROBREVIN, ALPHA
212377_s_at	2.02E-04	2.1271	NOTCH2	NOTCH HOMOLOG 2 (DROSOPHILA)
AFFX-BioB- 3_at	9.03E-05	2.1211	BIOB	BIOTIN SYNTHESIS, SULFUR INSERTION?
203620_s_at	4.49E-04	2.1179	FCHSD2	FCH AND DOUBLE SH3 DOMAINS 2
213160_at	1.94E-04	2.1166	DOCK2	DEDICATOR OF CYTOKINESIS 2
203178_at	1.38E-05	2.1141	GATM	GLYCINE AMIDINOTRANSFERASE (L- ARGININE:GLYCINE AMIDINOTRANSFERASE)
208779_x_at	5.79E-04	2.1134	DDR1	DISCOIDIN DOMAIN RECEPTOR FAMILY, MEMBER 1
214265_at	1.42E-04	2.1106	ITGA8	INTEGRIN, ALPHA 8
218831_s_at	1.07E-04	2.1098	FCGRT	FC FRAGMENT OF IGG, RECEPTOR,

				TRANSPORTER, ALPHA
203083_at	2.33E-04	2.1081	THBS2	THROMBOSPONDIN 2
209558_s_at	7.63E-04	2.1055	HIP1R	HUNTINGTIN INTERACTING PROTEIN 1 RELATED
221900_at	1.85E-05	2.1008	COL8A2	COLLAGEN, TYPE VIII, ALPHA 2
204959_at	2.41E-04	2.0992	MNDA	MYELOID CELL NUCLEAR DIFFERENTIATION ANTIGEN
210051_at	2.58E-04	2.0971	RAPGEF3	RAP GUANINE NUCLEOTIDE EXCHANGE FACTOR (GEF) 3
212658_at	4.41E-04	2.0970	LHFPL2	LIPOMA HMGIC FUSION PARTNER-LIKE 2
AFFX-r2-Ec-bioC-5_at	1.20E-04	2.0914	BIOC	BIOTIN SYNTHESIS PROTEIN BIOC
AFFX-BioB-M_at	1.98E-05	2.0900	BIOB	BIOTIN SYNTHASE
202443_x_at	2.09E-04	2.0892	NOTCH2	NOTCH HOMOLOG 2 (DROSOPHILA)
216264_s_at	1.68E-04	2.0826	LAMB2	LAMININ, BETA 2 (LAMININ S)
208790_s_at	4.09E-05	2.0820	PTRF	POLYMERASE I AND TRANSCRIPT RELEASE FACTOR
215526_at	1.94E-04	2.0820	WWOX	PUTATIVE OXIDOREDUCTASE
221276_s_at	9.78E-05	2.0816	SYNC1	SYNCOILIN, INTERMEDIATE FILAMENT 1
210749_x_at	7.73E-04	2.0809	DDR1	DISCOIDIN DOMAIN RECEPTOR FAMILY, MEMBER 1
205137_x_at	7.08E-04	2.0780	USH1C	USHER SYNDROME 1C (AUTOSOMAL RECESSIVE, SEVERE)
218414_s_at	3.80E-05	2.0779	NDE1	NUDE NUCLEAR DISTRIBUTION GENE E HOMOLOG 1 (A. NIDULANS)
211748_x_at	4.84E-05	2.0768	PTGDS	PROSTAGLANDIN D2 SYNTHASE 21KDA (BRAIN)
213578_at	3.36E-04	2.0754	BMPR1A	BONE MORPHOGENETIC PROTEIN RECEPTOR, TYPE IA
202723_s_at	1.86E-04	2.0749	FOXO1A	FORKHEAD BOX O1A (RHABDOMYOSARCOMA)
212187_x_at	5.13E-05	2.0748	PTGDS	PROSTAGLANDIN D2 SYNTHASE 21KDA (BRAIN)
202484_s_at	6.78E-04	2.0747	MBD2	METHYL-CPG BINDING DOMAIN PROTEIN 2
AFFX-r2-Ec-bioB-3_at	3.70E-04	2.0741	BIOB	PUTATIVE ENZYME BIOC
205988_at	1.68E-04	2.0736	CD84	CD84 ANTIGEN (LEUKOCYTE ANTIGEN)
212785_s_at	4.44E-04	2.0707	HDCMA18P	DKFZP564K112 PROTEIN
213437_at	3.53E-04	2.0646	NA	SIMILAR TO RUN AND FYVE DOMAIN-CONTAINING 2; RUN- AND FYVE-DOMAIN CONT
206171_at	3.10E-04	2.0630	ADORA3	ADENOSINE A3 RECEPTOR
205112_at	7.30E-04	2.0602	PLCE1	PHOSPHOLIPASE C, EPSILON 1
AFFX-r2-Ec-bioD-5_at	2.17E-04	2.0556	BIOD	DETHIOBIOTIN SYNTHETASE
218700_s_at	2.83E-04	2.0537	RAB7L1	RAB7, MEMBER RAS ONCOGENE FAMILY-LIKE 1
209508_x_at	6.32E-05	2.0522	CFLAR	CASP8 AND FADD-LIKE APOPTOSIS REGULATOR
221747_at	7.17E-04	2.0442	TNS1	TENSIN 1
205846_at	2.79E-04	2.0403	PTPRB	PROTEIN TYROSINE PHOSPHATASE, RECEPTOR TYPE, B
209070_s_at	3.55E-04	2.0331	RGS5	REGULATOR OF G-PROTEIN SIGNALLING 5
214181_x_at	3.57E-05	2.0328	LST1	LEUKOCYTE-SPECIFIC TRANSCRIPT 1
201346_at	2.38E-04	2.0281	ADIPOR2	ADIPONECTIN RECEPTOR 2
202994_s_at	6.35E-04	2.0242	FBLN1	FIBULIN 1
213656_s_at	2.70E-04	2.0226	KNS2	KINESIN 2
214829_at	6.12E-04	2.0223	AASS	AMINOADIPATE-SEMIALDEHYDE SYNTHASE
AFFX-BioC-3_at	1.99E-04	2.0216	BIOC	BIOTIN SYNTHESIS, SULFUR INSERTION?
204342_at	4.01E-04	2.0179	SLC25A24	SOLUTE CARRIER FAMILY 25 (MITOCHONDRIAL CARRIER; PHOSPHATE CARRIER), M...

209655_s_at	2.73E-04	2.0126	TMEM47	TRANSMEMBRANE PROTEIN 47
212420_at	1.37E-04	2.0125	ELF1	E74-LIKE FACTOR 1 (ETS DOMAIN TRANSCRIPTION FACTOR)
204983_s_at	9.53E-04	2.0103	GPC4	GLYPICAN 4
209826_at	1.90E-05	2.0079	PPT2/EGFL8	PALMITOYL-PROTEIN THIOESTERASE 2
202687_s_at	5.88E-04	2.0029	TNFSF10	TUMOR NECROSIS FACTOR (LIGAND) SUPERFAMILY, MEMBER 10
221805_at	3.57E-04	0.0837	NEFL	NEUROFILAMENT, LIGHT POLYPEPTIDE 68KDA
205825_at	3.40E-04	0.0838	PCSK1	PROPROTEIN CONVERTASE SUBTILISIN/KEXIN TYPE 1
206935_at	2.05E-05	0.0860	PCDH8	PROTODADHERIN 8
214432_at	2.21E-04	0.1106	ATP1A3	ATPASE, NA+/K+ TRANSPORTING, ALPHA 3 POLYPEPTIDE
204337_at	4.79E-05	0.1146	RGS4	REGULATOR OF G-PROTEIN SIGNALLING 4
203998_s_at	8.59E-04	0.1191	SYT1	SYNAPTOTAGMIN I
203000_at	1.18E-04	0.1280	STMN2	STATHMIN-LIKE 2
201939_at	2.83E-05	0.1330	PLK2	POLO-LIKE KINASE 2 (DROSOPHILA)
206115_at	2.22E-06	0.1342	EGR3	EARLY GROWTH RESPONSE 3
204339_s_at	1.24E-04	0.1399	RGS4	REGULATOR OF G-PROTEIN SIGNALLING 4
206552_s_at	4.88E-04	0.1414	TAC1	TACHYKININ, PRECURSOR 1 (SUBSTANCE K, SUBSTANCE P, NEUROKININ 1, NEURO...
203999_at	4.34E-05	0.1420	SYT1	SYNAPTOTAGMIN I
220359_s_at	6.21E-05	0.1433	ARPP-21	CYCLIC AMP-REGULATED PHOSPHOPROTEIN, 21 KD
206678_at	1.63E-04	0.1443	GABRA1	GAMMA-AMINOBUTYRIC ACID (GABA) A RECEPTOR, ALPHA 1
214230_at	4.53E-05	0.1454	CDC42	CELL DIVISION CYCLE 42 (GTP BINDING PROTEIN, 25KDA)
203001_s_at	3.02E-04	0.1476	STMN2	STATHMIN-LIKE 2
201340_s_at	3.92E-04	0.1477	ENC1	ECTODERMAL-NEURAL CORTEX (WITH BTB-LIKE DOMAIN)
204035_at	1.68E-04	0.1490	SCG2	SECRETOTRANIN II (CHROMOGRANIN C)
221916_at	1.94E-04	0.1507	NEFL	NEUROFILAMENT, LIGHT POLYPEPTIDE 68KDA
204722_at	7.20E-05	0.1540	SCN3B	SODIUM CHANNEL, VOLTAGE-GATED, TYPE III, BETA
220979_s_at	4.01E-05	0.1559	ST6GALNAC5	ST6 (ALPHA-N-ACETYL-NEURAMINYL-2,3-BETA-GALACTOSYL-1,3)-N-ACETYLGALACT...
201341_at	7.04E-05	0.1583	ENC1	ECTODERMAL-NEURAL CORTEX (WITH BTB-LIKE DOMAIN)
215303_at	1.70E-04	0.1663	DCAMKL1	DOUBLECORTIN AND CAM KINASE-LIKE 1
206290_s_at	4.13E-05	0.1677	RGS7	REGULATOR OF G-PROTEIN SIGNALLING 7
213436_at	7.96E-05	0.1686	CNR1	CANNABINOID RECEPTOR 1 (BRAIN)
206384_at	6.45E-05	0.1727	CACNG3	CALCIUM CHANNEL, VOLTAGE-DEPENDENT, GAMMA SUBUNIT 3
205110_s_at	6.30E-05	0.1738	FGF13	FIBROBLAST GROWTH FACTOR 13
214811_at	1.37E-04	0.1740	RIMBP2	RIMS BINDING PROTEIN 2
204260_at	4.14E-04	0.1750	CHGB	CHROMOGRANIN B (SECRETOTRANIN 1)
210016_at	7.02E-05	0.1754	MYT1L	MYELIN TRANSCRIPTION FACTOR 1-LIKE
221801_x_at	2.40E-04	0.1760	NEFL	NEUROFILAMENT, LIGHT POLYPEPTIDE 68KDA
215241_at	6.52E-05	0.1780	TMEM16C	TRANSMEMBRANE PROTEIN 16C
203797_at	2.43E-04	0.1794	VSNL1	VISININ-LIKE 1
219896_at	3.46E-04	0.1825	DRD1IP	DOPAMINE RECEPTOR D1 INTERACTING PROTEIN
205278_at	4.44E-04	0.1827	GAD1	GLUTAMATE DECARBOXYLASE 1 (BRAIN, 67KDA)
213808_at	2.80E-04	0.1845	ADAM23	ADAM METALLOPEPTIDASE DOMAIN 23

204230_s_at	7.64E-04	0.1847	SLC17A7	SOLUTE CARRIER FAMILY 17 (SODIUM-DEPENDENT INORGANIC PHOSPHATE COTRANS...
209755_at	6.98E-04	0.1856	NMNAT2	NICOTINAMIDE NUCLEOTIDE ADENYLYLTRANSFERASE 2
204465_s_at	2.65E-04	0.1882	INA	INTERNEXIN NEURONAL INTERMEDIATE FILAMENT PROTEIN, ALPHA
204471_at	4.59E-05	0.1893	GAP43	GROWTH ASSOCIATED PROTEIN 43
210181_s_at	3.00E-04	0.1928	CABP1	CALCIUM BINDING PROTEIN 1 (CALBRAIN)
211685_s_at	1.64E-04	0.1958	NCALD	NEUROCALCIN DELTA
206275_s_at	2.87E-04	0.1969	MICAL2	MICROTUBULE ASSOCIATED MONOOXYGENASE, CALPONIN AND LIM DOMAIN CONTAININ...
211616_s_at	1.39E-04	0.1972	HTR2A	5-HYDROXYTRYPTAMINE (SEROTONIN) RECEPTOR 2A
204953_at	1.14E-04	0.1989	SNAP91	SYNAPTOSOMAL-ASSOCIATED PROTEIN, 91KDA HOMOLOG (MOUSE)
206698_at	2.81E-05	0.2016	XK	X-LINKED KX BLOOD GROUP (MCLEOD SYNDROME)
203413_at	1.27E-04	0.2017	NELL2	NEL-LIKE 2 (CHICKEN)
219855_at	4.10E-06	0.2029	NUDT11	NUDIX (NUCLEOSIDE DIPHOSPHATE LINKED MOIETY X)-TYPE MOTIF 11
207853_s_at	1.34E-04	0.2029	SNCB	SYNUCLEIN, BETA
204723_at	4.09E-05	0.2035	SCN3B	SODIUM CHANNEL, VOLTAGE-GATED, TYPE III, BETA
210232_at	8.59E-04	0.2041	CDC42	CELL DIVISION CYCLE 42 (GTP BINDING PROTEIN, 25KDA)
218625_at	2.43E-05	0.2055	NRN1	NEURITIN 1
207957_s_at	1.64E-04	0.2071	PRKCB1	PROTEIN KINASE C, BETA 1
212554_at	9.39E-05	0.2105	CAP2	CAP, ADENYLATE CYCLASE-ASSOCIATED PROTEIN, 2 (YEAST)
204869_at	1.91E-05	0.2137	PCSK2	PROPROTEIN CONVERTASE SUBTILISIN/KEXIN TYPE 2
209990_s_at	2.10E-05	0.2159	GABBR2	GAMMA-AMINOBUTYRIC ACID (GABA) B RECEPTOR, 2
214998_at	3.48E-05	0.2165	DKFZP686K16132	SIMILAR TO BMP2 INDUCIBLE KINASE
214945_at	3.94E-04	0.2166	NY-REN-7/NA	KIAA0752 PROTEIN
219368_at	1.18E-04	0.2170	NAP1L2	NUCLEOSOME ASSEMBLY PROTEIN 1-LIKE 2
214956_at	5.79E-04	0.2171	DKFZP686K16132	SIMILAR TO BMP2 INDUCIBLE KINASE
210247_at	2.98E-05	0.2172	SYN2	SYNAPSIN II
214098_at	1.40E-04	0.2175	KIAA1107	KIAA1107
210222_s_at	3.26E-04	0.2178	RTN1	RETICULON 1
219308_s_at	1.18E-04	0.2182	AK5	ADENYLATE KINASE 5
205230_at	3.56E-04	0.2196	RPH3A	RABPHILIN 3A HOMOLOG (MOUSE)
221914_at	1.50E-05	0.2201	SYN1	SYNAPSIN I
202854_at	4.18E-04	0.2226	HPRT1	HYPOXANTHINE PHOSPHORIBOSYLTRANSFERASE 1 (LESCH-NYHAN SYNDROME)
206051_at	5.51E-05	0.2239	ELAVL4	ELAV (EMBRYONIC LETHAL, ABNORMAL VISION, DROSOPHILA)-LIKE 4 (HU ANTIGE...
206731_at	2.03E-04	0.2253	CNKS2	CONNECTOR ENHANCER OF KINASE SUPPRESSOR OF RAS 2
217077_s_at	6.71E-05	0.2254	GABBR2	GAMMA-AMINOBUTYRIC ACID (GABA) B RECEPTOR, 2
219736_at	1.64E-05	0.2267	TRIM36	TRIPARTITE MOTIF-CONTAINING 36
203159_at	3.55E-04	0.2278	GLS	GLUTAMINASE
205551_at	1.88E-05	0.2295	SV2B	SYNAPTIC VESICLE GLYCOPROTEIN 2B
219463_at	4.59E-04	0.2297	C20ORF103	CHROMOSOME 20 OPEN READING FRAME 103

213486_at	5.04E-05	0.2332	DKFZP761N09121/COPG2	COATOMER PROTEIN COMPLEX, SUBUNIT GAMMA 2
205489_at	6.27E-04	0.2332	CRYM	CRYSTALLIN, MU
213920_at	2.47E-04	0.2344	CUTL2	CUT-LIKE 2 (DROSOPHILA)
218404_at	1.13E-04	0.2348	SNX10	SORTING NEXIN 10
206481_s_at	6.48E-05	0.2349	LDB2	LIM DOMAIN BINDING 2
215161_at	7.89E-05	0.2355	CAMK1G	CALCIUM/CALMODULIN-DEPENDENT PROTEIN KINASE IG
210040_at	2.93E-04	0.2373	SLC12A5	SOLUTE CARRIER FAMILY 12, (POTASSIUM-CHLORIDE TRANSPORTER) MEMBER 5
211451_s_at	1.48E-04	0.2383	KCNJ4	POTASSIUM INWARDLY-RECTIFYING CHANNEL, SUBFAMILY J, MEMBER 4
206013_s_at	4.77E-04	0.2407	ACTL6B	ACTIN-LIKE 6B
213938_at	2.88E-04	0.2409	CAST1	CAZ-ASSOCIATED STRUCTURAL PROTEIN
209372_x_at	2.48E-05	0.2416	TUBB2ATUBB2B	TUBULIN, BETA 2A AND BETA 2B
209991_x_at	2.22E-04	0.2424	GABBR2	GAMMA-AMINOBUTYRIC ACID (GABA) B RECEPTOR, 2
204675_at	3.76E-04	0.2445	SRD5A1	STEROID-5-ALPHA-REDUCTASE, ALPHA POLYPEPTIDE 1 (3-OXO-5 ALPHA-STEROID ...
213200_at	4.92E-05	0.2448	SYP	SYNAPTOPHYSIN
219619_at	1.15E-04	0.2468	DIRAS2	DIRAS FAMILY, GTP-BINDING RAS-LIKE 2
205751_at	6.85E-04	0.2481	SH3GL2	SH3-DOMAIN GRB2-LIKE 2
203889_at	6.26E-04	0.2481	SGNE1	SECRETORY GRANULE, NEUROENDOCRINE PROTEIN 1 (7B2 PROTEIN)
205635_at	2.36E-04	0.2483	KALRN	KALIRIN, RHOGEF KINASE
204364_s_at	2.55E-04	0.2487	REEP1	RECEPTOR ACCESSORY PROTEIN 1
204995_at	1.73E-04	0.2491	CDK5R1	CYCLIN-DEPENDENT KINASE 5, REGULATORY SUBUNIT 1 (P35)
204697_s_at	3.11E-05	0.2510	CHGA	CHROMOGRANIN A (PARATHYROID SECRETORY PROTEIN 1)
204540_at	1.03E-04	0.2518	EEF1A2	EUKARYOTIC TRANSLATION ELONGATION FACTOR 1 ALPHA 2
215972_at	4.04E-05	0.2518	NA	,CONSENSUS INCLUDES GB:AF070547.1 /DEF=HOMO SAPIENS CLONE 24820 MRNA S
218868_at	4.01E-05	0.2526	ACTR3B	ARP3 ACTIN-RELATED PROTEIN 3 HOMOLOG B (YEAST)
212551_at	1.61E-04	0.2528	CAP2	CAP, ADENYLATE CYCLASE-ASSOCIATED PROTEIN, 2 (YEAST)
202395_at	9.68E-04	0.2555	NSF	N-ETHYLMALEIMIDE-SENSITIVE FACTOR
205257_s_at	6.61E-04	0.2556	AMPH	AMPHIPHYSIN (STIFF-MAN SYNDROME WITH BREAST CANCER 128KDA AUTOANTIGEN)
213040_s_at	2.70E-05	0.2557	NPTXR	NEURONAL PENTRAXIN RECEPTOR
205737_at	2.18E-05	0.2563	KCNQ2	POTASSIUM VOLTAGE-GATED CHANNEL, KQT-LIKE SUBFAMILY, MEMBER 2
201387_s_at	2.40E-04	0.2580	UCHL1	UBIQUITIN CARBOXYL-TERMINAL ESTERASE L1 (UBIQUITIN THIOLESTERASE)
207135_at	1.67E-05	0.2589	HTR2A	5-HYDROXYTRYPTAMINE (SEROTONIN) RECEPTOR 2A
213435_at	3.37E-04	0.2593	SATB2	SATB FAMILY MEMBER 2
221288_at	2.81E-05	0.2606	GPR22	G PROTEIN-COUPLED RECEPTOR 22
204870_s_at	9.38E-05	0.2608	PCSK2	PROPROTEIN CONVERTASE SUBTILISIN/KEXIN TYPE 2
209583_s_at	2.15E-04	0.2608	CD200	CD200 ANTIGEN
214874_at	1.33E-04	0.2611	PKP4	PLAKOPHILIN 4
205678_at	7.98E-05	0.2612	AP3B2	ADAPTOR-RELATED PROTEIN COMPLEX 3, BETA 2 SUBUNIT
206089_at	1.12E-04	0.2621	NELL1	NEL-LIKE 1 (CHICKEN)
209582_s_at	3.15E-04	0.2633	CD200	CD200 ANTIGEN
202508_s_at	5.46E-04	0.2642	SNAP25	SYNAPTOSOMAL-ASSOCIATED PROTEIN, 25KDA

210454_s_at	6.62E-05	0.2667	KCNJ6	POTASSIUM INWARDLY-RECTIFYING CHANNEL, SUBFAMILY J, MEMBER 6
221217_s_at	8.51E-05	0.2670	A2BP1	ATAXIN 2-BINDING PROTEIN 1
219140_s_at	1.47E-04	0.2672	RBP4	RETINOL BINDING PROTEIN 4, PLASMA
202260_s_at	2.05E-04	0.2683	STXBP1	SYNTAXIN BINDING PROTEIN 1
210381_s_at	1.78E-04	0.2694	CCKBR	CHOLECYSTOKININ B RECEPTOR
205691_at	9.86E-05	0.2695	SYNGR3	SYNAPTOGYRIN 3
213245_at	1.10E-04	0.2696	ADCY1	ADENYLATE CYCLASE 1 (BRAIN)
215116_s_at	4.44E-05	0.2708	DNM1	DYNAMIN 1
213268_at	5.25E-04	0.2710	CAMTA1	CALMODULIN BINDING TRANSCRIPTION ACTIVATOR 1
212877_at	4.79E-04	0.2712	KNS2	KINESIN 2
205827_at	8.57E-04	0.2714	CCK	CHOLECYSTOKININ
204365_s_at	2.05E-04	0.2716	REEP1	RECEPTOR ACCESSORY PROTEIN 1
213636_at	2.81E-04	0.2731	KIAA1045	KIAA1045
212930_at	6.83E-05	0.2734	ATP2B1	ATPASE, CA ⁺⁺ TRANSPORTING, PLASMA MEMBRANE 1
205325_at	8.56E-06	0.2739	PHYHIP	PHYTANOYL-COA 2-HYDROXYLASE INTERACTING PROTEIN
204141_at	1.11E-04	0.2742	TUBB2A	TUBULIN, BETA 2A
208002_s_at	2.04E-04	0.2753	ACOT7	ACYL-COA THIOESTERASE 7
206780_at	4.11E-04	0.2754	GAD2	GLUTAMATE DECARBOXYLASE 2 (PANCREATIC ISLETS AND BRAIN, 65KDA)
209200_at	3.20E-04	0.2755	MEF2C	MADS BOX TRANSCRIPTION ENHANCER FACTOR 2, POLYPEPTIDE C (MYOCYTE ENHAN...
218332_at	1.93E-04	0.2765	BEX1	BRAIN EXPRESSED, X-LINKED 1
217128_s_at	2.41E-04	0.2767	CAMK1G	CALCIUM/CALMODULIN-DEPENDENT PROTEIN KINASE IG
211071_s_at	1.85E-04	0.2775	MLLT11	MYELOID/LYMPHOID OR MIXED-LINEAGE LEUKEMIA (TRITHORAX HOMOLOG, DROSOPH...
218623_at	1.67E-04	0.2792	HMP19	HMP19 PROTEIN
208851_s_at	6.11E-05	0.2807	THY1	THY-1 CELL SURFACE ANTIGEN
205348_s_at	9.67E-04	0.2810	DYNC111	DYNEIN, CYTOPLASMIC 1, INTERMEDIATE CHAIN 1
204743_at	2.25E-04	0.2810	TAGLN3	TRANSGELIN 3
205352_at	7.11E-04	0.2822	SERPINI1	SERPIN PEPTIDASE INHIBITOR, CLADE I (NEUROSERPIN), MEMBER 1
204229_at	1.21E-04	0.2825	SLC17A7	SOLUTE CARRIER FAMILY 17 (SODIUM-DEPENDENT INORGANIC PHOSPHATE COTRANS...
202438_x_at	3.30E-04	0.2827	IDS	IDURONATE 2-SULFATASE (HUNTER SYNDROME)
212976_at	6.88E-05	0.2834	LRRC8B	LEUCINE RICH REPEAT CONTAINING 8 FAMILY, MEMBER B
213927_at	2.46E-04	0.2847	MAP3K9	MITOGEN-ACTIVATED PROTEIN KINASE KINASE KINASE 9
213496_at	1.40E-04	0.2847	LPPR4	PLASTICITY RELATED GENE 1
206448_at	9.36E-04	0.2858	ZNF365	ZINC FINGER PROTEIN 365
210227_at	1.49E-05	0.2867	DLGAP2	DISCS, LARGE (DROSOPHILA) HOMOLOG-ASSOCIATED PROTEIN 2
207548_at	1.70E-06	0.2869	GRM7	GLUTAMATE RECEPTOR, METABOTROPIC 7
204945_at	7.16E-05	0.2874	PTPRN	PROTEIN TYROSINE PHOSPHATASE, RECEPTOR TYPE, N
219532_at	1.18E-04	0.2877	ELOVL4	ELONGATION OF VERY LONG CHAIN FATTY ACIDS (FEN1/ELO2, SUR4/ELO3, YEAST...
213558_at	8.85E-05	0.2880	PCLO	PICCOLO (PRESYNAPTIC CYTOMATRIX PROTEIN)
204586_at	7.60E-05	0.2881	BSN	BASSOON (PRESYNAPTIC CYTOMATRIX PROTEIN)
209598_at	1.64E-04	0.2886	PNMA2	PARANEOPlastic ANTIGEN MA2
215143_at	2.00E-04	0.2896	FLJ36166	HYPOTHETICAL PROTEIN FLJ36166

204081_at	2.17E-04	0.2898	NRGN	NEUROGRANIN (PROTEIN KINASE C SUBSTRATE, RC3)
202712_s_at	3.32E-04	0.2901	CKMT1A/CKMT1B	CREATINE KINASE, MITOCHONDRIAL 1B
218720_x_at	3.36E-04	0.2902	SEZ6L2	SEIZURE RELATED 6 HOMOLOG (MOUSE)-LIKE 2
205850_s_at	3.58E-04	0.2942	GABRB3	GAMMA-AMINOBUTYRIC ACID (GABA) A RECEPTOR, BETA 3
204749_at	4.18E-04	0.2951	NAP1L3	NUCLEOSOME ASSEMBLY PROTEIN 1-LIKE 3
208121_s_at	8.45E-04	0.2961	PTPRO	PROTEIN TYROSINE PHOSPHATASE, RECEPTOR TYPE, O
216963_s_at	1.94E-05	0.2961	GAP43	GROWTH ASSOCIATED PROTEIN 43
215267_s_at	2.55E-05	0.2962	SLC8A2	SOLUTE CARRIER FAMILY 8 (SODIUM-CALCIUM EXCHANGER), MEMBER 2
210781_x_at	1.22E-04	0.2965	GRIN1	GLUTAMATE RECEPTOR, IONOTROPIC, N-METHYL D-ASPARTATE 1
214120_at	1.66E-04	0.2988	RFPL1S	RET FINGER PROTEIN-LIKE 1 ANTISENSE
210650_s_at	8.40E-04	0.2995	PCLO	PICCOLO (PRESYNAPTIC CYTOMATRIX PROTEIN)
203264_s_at	2.00E-04	0.2996	ARHGEF9	CDC42 GUANINE NUCLEOTIDE EXCHANGE FACTOR (GEF) 9
219497_s_at	3.51E-04	0.3003	BCL11A	B-CELL CLL/LYMPHOMA 11A (ZINC FINGER PROTEIN)
214596_at	8.33E-05	0.3012	CHRM3	CHOLINERGIC RECEPTOR, MUSCARINIC 3
218273_s_at	2.95E-04	0.3020	PPM2C	PROTEIN PHOSPHATASE 2C, MAGNESIUM-DEPENDENT, CATALYTIC SUBUNIT
214217_at	3.10E-04	0.3026	GRM5	GLUTAMATE RECEPTOR, METABOTROPIC 5
209159_s_at	2.38E-04	0.3026	NDRG4	NDRG FAMILY MEMBER 4
201313_at	5.91E-05	0.3038	ENO2	ENOLASE 2 (GAMMA, NEURONAL)
206161_s_at	1.49E-04	0.3040	SYT5	SYNAPTOTAGMIN V
210015_s_at	7.59E-04	0.3054	MAP2	MICROTUBULE-ASSOCIATED PROTEIN 2
220030_at	3.46E-05	0.3056	STYK1	SERINE/THREONINE/TYROSINE KINASE 1
211679_x_at	2.92E-05	0.3057	GABBR2	GAMMA-AMINOBUTYRIC ACID (GABA) B RECEPTOR, 2
37566_at	2.95E-04	0.3058	KIAA1045	KIAA1045
203607_at	3.80E-04	0.3062	INPP5F	INOSITOL POLYPHOSPHATE-5-PHOSPHATASE F
214293_at	2.08E-04	0.3064	11-Sep	SEPTIN 11
213308_at	2.68E-04	0.3078	SHANK2	SH3 AND MULTIPLE ANKYRIN REPEAT DOMAINS 2
219073_s_at	2.69E-04	0.3083	OSBPL10	HYPOTHETICAL PROTEIN FLJ20363
204506_at	5.21E-04	0.3083	PPP3R1	PROTEIN PHOSPHATASE 3 (FORMERLY 2B), REGULATORY SUBUNIT B, 19KDA, ALPH...
206773_at	4.58E-05	0.3086	LY6H	LYMPHOCYTE ANTIGEN 6 COMPLEX, LOCUS H
219937_at	5.85E-04	0.3090	TRHDE	THYROTROPIN-RELEASING HORMONE DEGRADING ENZYME
205795_at	5.16E-05	0.3092	NRXN3	NEUREXIN 3
204793_at	2.67E-04	0.3113	GPRASP1	G PROTEIN-COUPLED RECEPTOR ASSOCIATED SORTING PROTEIN 1
202154_x_at	2.62E-05	0.3133	TUBB3/MC1R	MELANOCORTIN 1 RECEPTOR (ALPHA MELANOCYTE STIMULATING HORMONE RECEPTOR...
201962_s_at	9.27E-05	0.3133	RNF41	RING FINGER PROTEIN 41
204762_s_at	7.87E-04	0.3147	GNAO1	GUANINE NUCLEOTIDE BINDING PROTEIN (G PROTEIN), ALPHA ACTIVATING ACTIV...
208321_s_at	8.63E-05	0.3158	CABP1	CALCIUM BINDING PROTEIN 1 (CALBRAIN)
205744_at	3.30E-05	0.3159	DOC2A	DOUBLE C2-LIKE DOMAINS, ALPHA
222005_s_at	3.09E-04	0.3168	GNG3	GUANINE NUCLEOTIDE BINDING PROTEIN (G PROTEIN), GAMMA 3
219659_at	4.01E-04	0.3181	ATP8A2	ATPASE, AMINOPHOSPHOLIPID TRANSPORTER-LIKE, CLASS I, TYPE 8A, MEMBER 2
213222_at	2.75E-04	0.3183	PLCB1	PHOSPHOLIPASE C, BETA 1 (PHOSPHOINOSITIDE-SPECIFIC)

204165_at	1.54E-04	0.3201	WASF1	WAS PROTEIN FAMILY, MEMBER 1
212473_s_at	1.81E-05	0.3201	MICAL2	MICROTUBULE ASSOCIATED MONOOXYGENASE, CALPONIN AND LIM DOMAIN CONTAININ...
209556_at	2.39E-05	0.3203	NCDN	NEUROCHONDRIN
220131_at	3.03E-04	0.3225	FXYP7	FXYP DOMAIN CONTAINING ION TRANSPORT REGULATOR 7
206233_at	5.12E-04	0.3226	B4GALT6	UDP-GAL:BETAGLCNAC BETA 1,4-GALACTOSYLTRANSFERASE, POLYPEPTIDE 6
205549_at	6.51E-04	0.3233	PCP4	PURKINJE CELL PROTEIN 4
204718_at	1.09E-04	0.3239	EPHB6	EPH RECEPTOR B6
213666_at	1.20E-04	0.3241	6-Sep	SEPTIN 6
208850_s_at	3.35E-04	0.3246	THY1	THY-1 CELL SURFACE ANTIGEN
206045_s_at	6.26E-06	0.3253	NOL4	NUCLEOLAR PROTEIN 4
204592_at	5.46E-05	0.3277	DLG4	DISCS, LARGE HOMOLOG 4 (DROSOPHILA)
213476_x_at	4.61E-05	0.3280	MC1R/TUBB3	MELANOCORTIN 1 RECEPTOR (ALPHA MELANOCYTE STIMULATING HORMONE RECEPTOR...
213131_at	2.01E-04	0.3283	OLFM1	OLFACTOMEDIN 1
205531_s_at	1.08E-04	0.3284	GLS2	GLUTAMINASE 2 (LIVER, MITOCHONDRIAL)
206253_at	8.55E-04	0.3289	DLG2	DISCS, LARGE HOMOLOG 2, CHAPSYN-110 (DROSOPHILA)
205031_at	1.44E-04	0.3290	EFNB3	EPHRIN-B3
214111_at	3.28E-05	0.3295	OPCML	OPIOID BINDING PROTEIN/CELL ADHESION MOLECULE-LIKE
205948_at	1.64E-04	0.3296	PTPRT	PROTEIN TYROSINE PHOSPHATASE, RECEPTOR TYPE, T
206162_x_at	5.25E-05	0.3303	SYT5	SYNAPTOTAGMIN V
216944_s_at	5.98E-04	0.3304	ITPR1	INOSITOL 1,4,5-TRIPHOSPHATE RECEPTOR, TYPE 1
214978_s_at	4.38E-04	0.3317	PPFIA4	PROTEIN TYROSINE PHOSPHATASE, RECEPTOR TYPE, F POLYPEPTIDE (PTPRF), IN...
52837_at	3.92E-04	0.3318	KIAA1644	KIAA1644 PROTEIN
204546_at	7.09E-05	0.3324	KIAA0513	KIAA0513
221874_at	2.13E-04	0.3325	KIAA1324	KIAA1324
206280_at	9.86E-05	0.3328	CDH18	CADHERIN 18, TYPE 2
219734_at	1.40E-05	0.3339	SIDT1	SID1 TRANSMEMBRANE FAMILY, MEMBER 1
211125_x_at	7.74E-05	0.3365	GRIN1	GLUTAMATE RECEPTOR, IONOTROPIC, N-METHYL D-ASPARTATE 1
214078_at	1.88E-04	0.3377	PAK3	P21 (CDKN1A)-ACTIVATED KINASE 3
205899_at	5.07E-04	0.3385	CCNA1	CYCLIN A1
206381_at	3.70E-04	0.3386	SCN2A2	SODIUM CHANNEL, VOLTAGE-GATED, TYPE II, ALPHA 2
213338_at	2.47E-04	0.3389	RIS1	RAS-INDUCED SENESCENCE 1
213967_at	2.03E-04	0.3396	LOC138046	HYPOTHETICAL PROTEIN LOC138046
200623_s_at	2.61E-04	0.3403	CALM1/2/3	CALMODULIN 1 (PHOSPHORYLASE KINASE, DELTA)
221727_at	1.71E-04	0.3404	SUB1/NA	SUB1 HOMOLOG (S. CEREVISIAE)
205277_at	2.12E-04	0.3408	PRDM2	PR DOMAIN CONTAINING 2, WITH ZNF DOMAIN
212990_at	1.41E-04	0.3409	SYNJ1	SYNAPTOJANIN 1
212559_at	4.66E-05	0.3418	PRKAR1B	PROTEIN KINASE, CAMP-DEPENDENT, REGULATORY, TYPE I, BETA
214044_at	3.38E-04	0.3419	RYR2	RYANODINE RECEPTOR 2 (CARDIAC)
202391_at	4.96E-05	0.3427	BASP1	BRAIN ABUNDANT, MEMBRANE ATTACHED SIGNAL PROTEIN 1
207035_at	4.90E-05	0.3452	SLC30A3	SOLUTE CARRIER FAMILY 30 (ZINC TRANSPORTER), MEMBER 3
213904_at	2.37E-05	0.3453	NA	.CONSENSUS INCLUDES GB:AL390170.1 /DEF=HOMO SAPIENS MRNA; CDNA DKFZP54
219461_at	1.81E-04	0.3454	PAK6	P21(CDKN1A)-ACTIVATED KINASE 6

205268_s_at	8.96E-04	0.3459	ADD2	ADDUCIN 2 (BETA)
219877_at	7.10E-05	0.3477	ZMAT4	ZINC FINGER, MATRIN TYPE 4
59697_at	5.56E-05	0.3488	RAB15	RAB15, MEMBER RAS ONCOGENE FAMILY
220999_s_at	1.60E-04	0.3491	CYFIP2	CYTOPLASMIC FMR1 INTERACTING PROTEIN 2
213869_x_at	7.20E-05	0.3495	THY1	THY-1 CELL SURFACE ANTIGEN
204467_s_at	1.06E-04	0.3500	SNCA	SYNUCLEIN, ALPHA (NON A4 COMPONENT OF AMYLOID PRECURSOR)
214376_at	1.95E-04	0.3504	NA	,CONSENSUS INCLUDES GB:A1263044 /FEA=EST /DB_XREF=GI:3871247 /DB_XREF=
203069_at	1.31E-04	0.3504	SV2A	SYNAPTIC VESICLE GLYCOPROTEIN 2A
203110_at	1.20E-05	0.3508	PTK2B	PTK2B PROTEIN TYROSINE KINASE 2 BETA
212624_s_at	2.38E-04	0.3510	CHN1	CHIMERIN (CHIMAERIN) 1
219032_x_at	1.21E-04	0.3513	OPN3	OP SIN 3 (ENCEPHALOPSIN, PANOPSIN)
205454_at	7.46E-05	0.3518	HPCA	HIPPOCALCIN
214285_at	3.59E-04	0.3521	FABP3	FATTY ACID BINDING PROTEIN 3, MUSCLE AND HEART (MAMMARY-DERIVED GROWTH...
217979_at	4.64E-04	0.3523	TSPAN13	TETRASPANIN 13
211597_s_at	4.27E-06	0.3529	HOP	HOMEODOMAIN-ONLY PROTEIN
209683_at	1.52E-04	0.3536	FAM49A	FAMILY WITH SEQUENCE SIMILARITY 49, MEMBER A
212751_at	6.89E-05	0.3544	UBE2N	UBIQUITIN-CONJUGATING ENZYME E2N (UBC13 HOMOLOG, YEAST)
204679_at	1.53E-04	0.3552	KCNK1	POTASSIUM CHANNEL, SUBFAMILY K, MEMBER 1
202206_at	3.63E-04	0.3554	ARL4C	ADP-RIBOSYLATION FACTOR-LIKE 4C
214772_at	6.82E-04	0.3566	C11ORF41	CHROMOSOME 11 OPEN READING FRAME 41
220246_at	4.54E-04	0.3567	CAMK1D	CALCIUM/CALMODULIN-DEPENDENT PROTEIN KINASE ID
221236_s_at	2.16E-04	0.3570	STMN4	STATHMIN-LIKE 4
205915_x_at	4.53E-04	0.3580	GRIN1	GLUTAMATE RECEPTOR, IONOTROPIC, N-METHYL D-ASPARTATE 1
208359_s_at	5.93E-05	0.3583	KCNJ4	POTASSIUM INWARDLY-RECTIFYING CHANNEL, SUBFAMILY J, MEMBER 4
203911_at	8.98E-05	0.3585	RAP1GA1	RAP1, GTPASE ACTIVATING PROTEIN 1
205414_s_at	5.87E-04	0.3595	KIAA0672	KIAA0672 GENE PRODUCT
202540_s_at	3.32E-04	0.3597	HMGCR	3-HYDROXY-3-METHYLGLUTARYL-COENZYME A REDUCTASE
205721_at	1.95E-06	0.3597	GFRA2	GDNF FAMILY RECEPTOR ALPHA 2
219425_at	5.66E-05	0.3598	SULT4A1	SULFOTRANSFERASE FAMILY 4A, MEMBER 1
215021_s_at	9.22E-04	0.3600	NRXN3	NEUREXIN 3
209685_s_at	2.33E-05	0.3605	PRKCB1	PROTEIN KINASE C, BETA 1
206850_at	1.33E-04	0.3610	RRP22	RAS-RELATED ON CHROMOSOME 22
219671_at	8.37E-05	0.3613	HPCAL4	HIPPOCALCIN LIKE 4
202016_at	2.33E-05	0.3620	MEST	MESODERM SPECIFIC TRANSCRIPT HOMOLOG (MOUSE)
219389_at	2.93E-04	0.3643	SUSD4	SUSHI DOMAIN CONTAINING 4
202178_at	1.13E-04	0.3645	PRKCZ	PROTEIN KINASE C, ZETA
213452_at	2.58E-05	0.3660	ZNF184	ZINC FINGER PROTEIN 184 (KRUPPEL-LIKE)
207026_s_at	7.76E-04	0.3667	ATP2B3	ATPASE, CA ⁺⁺ TRANSPORTING, PLASMA MEMBRANE 3
218953_s_at	3.99E-04	0.3668	MGC3265	HYPOTHETICAL PROTEIN MGC3265
206196_s_at	3.56E-05	0.3676	RRIP8	RAP2 INTERACTING PROTEIN 8
209597_s_at	6.70E-04	0.3680	PNMA2	PARANEOPlastic ANTIGEN MA2
219301_s_at	3.91E-04	0.3700	CNTNAP2	CONTACTIN ASSOCIATED PROTEIN-LIKE 2
212699_at	2.69E-05	0.3700	SCAMP5	SECRETORY CARRIER MEMBRANE PROTEIN 5
203909_at	5.04E-05	0.3717	SLC9A6	SOLUTE CARRIER FAMILY 9 (SODIUM/HYDROGEN EXCHANGER), MEMBER 6

213307_at	5.18E-05	0.3720	SHANK2	SH3 AND MULTIPLE ANKYRIN REPEAT DOMAINS 2
205874_at	1.75E-04	0.3733	ITPKA	INOSITOL 1,4,5-TRISPHOSPHATE 3-KINASE A
214735_at	1.65E-04	0.3734	PIP3-E	PHOSPHOINOSITIDE-BINDING PROTEIN PIP3-E
221810_at	1.63E-05	0.3741	RAB15	RAB15, MEMBER RAS ONCOGENE FAMILY
206489_s_at	4.31E-04	0.3749	DLGAP1	DISCS, LARGE (DROSOPHILA) HOMOLOG-ASSOCIATED PROTEIN 1
213172_at	6.99E-04	0.3752	TTC9	TETRATRICOPEPTIDE REPEAT DOMAIN 9
212252_at	2.20E-04	0.3761	CAMKK2	CALCIUM/CALMODULIN-DEPENDENT PROTEIN KINASE KINASE 2, BETA
215052_at	1.97E-05	0.3773	FRMPD4	FERM AND PDZ DOMAIN CONTAINING 4
221865_at	9.85E-04	0.3784	C9ORF91	CHROMOSOME 9 OPEN READING FRAME 91
207789_s_at	3.01E-05	0.3787	DPP6	DIPEPTIDYL-PEPTIDASE 6
214157_at	8.48E-04	0.3802	GNAS	GNAS COMPLEX LOCUS
206084_at	4.83E-04	0.3804	PTPRR	PROTEIN TYROSINE PHOSPHATASE, RECEPTOR TYPE, R
209557_s_at	5.18E-04	0.3804	NCDN	NEUROCHONDRIN
205591_at	5.21E-05	0.3804	OLFM1	OLFACTOMEDIN 1
219894_at	8.35E-05	0.3819	MAGEL2	MAGE-LIKE 2
218824_at	8.87E-04	0.3820	FLJ10781	HYPOTHETICAL PROTEIN FLJ10781
216073_at	9.24E-04	0.3825	LOC390616	SIMILAR TO RIKEN CDNA B230218L05 GENE
206281_at	4.71E-04	0.3847	ADCYAP1	ADENYLATE CYCLASE ACTIVATING POLYPEPTIDE 1 (PITUITARY)
219528_s_at	2.03E-05	0.3849	BCL11B	B-CELL CLL/LYMPHOMA 11B (ZINC FINGER PROTEIN)
221792_at	2.02E-04	0.3850	RAB6B	RAB6B, MEMBER RAS ONCOGENE FAMILY
212448_at	1.74E-05	0.3852	NEDD4L	NEURAL PRECURSOR CELL EXPRESSED, DEVELOPMENTALLY DOWN-REGULATED 4-LIKE
218888_s_at	7.89E-04	0.3853	NETO2	HYPOTHETICAL PROTEIN FLJ10430
204237_at	2.59E-04	0.3856	GULP1	GULP, ENGULFMENT ADAPTOR PTB DOMAIN CONTAINING 1
203861_s_at	4.67E-05	0.3883	ACTN2	ACTININ, ALPHA 2
218324_s_at	2.96E-05	0.3890	SPATS2	SPERMATOGENESIS ASSOCIATED, SERINE-RICH 2
220334_at	1.53E-05	0.3893	RGS17	REGULATOR OF G-PROTEIN SIGNALLING 17
209186_at	2.17E-04	0.3896	ATP2A2	ATPASE, CA ⁺⁺ TRANSPORTING, CARDIAC MUSCLE, SLOW TWITCH 2
204729_s_at	7.51E-04	0.3899	STX1A	SYNTAXIN 1A (BRAIN)
212555_at	6.73E-04	0.3914	PRKAR1B	PROTEIN KINASE, CAMP-DEPENDENT, REGULATORY, TYPE I, BETA
212446_s_at	6.26E-04	0.3916	LASS6	LAG1 LONGEVITY ASSURANCE HOMOLOG 6 (S. CEREVISIAE)
212215_at	3.31E-04	0.3916	PREPL	PROLYL ENDOPEPTIDASE-LIKE
202754_at	5.86E-05	0.3923	R3HDM1	R3H DOMAIN CONTAINING 1
217930_s_at	6.21E-04	0.3923	TOLLIP	TOLL INTERACTING PROTEIN
206857_s_at	9.29E-05	0.3927	FKBP1B	FK506 BINDING PROTEIN 1B, 12.6 KDA
212701_at	6.28E-05	0.3927	TLN2	TALIN 2
212801_at	9.19E-05	0.3931	CIT	CITRON (RHO-INTERACTING, SERINE/THREONINE KINASE 21)
208906_at	2.75E-04	0.3936	BSCL2/HNRPUL2	BERNARDINELLI-SEIP CONGENITAL LIPODYSTROPHY 2 (SEIPIN), HETEROGENEOUS NUCLEAR RIBONUCLEOPROTEIN U-LIKE 2
214607_at	2.80E-05	0.3941	PAK3	P21 (CDKN1A)-ACTIVATED KINASE 3
219400_at	7.59E-04	0.3946	CNTNAP1	CONTACTIN ASSOCIATED PROTEIN 1
204591_at	5.33E-04	0.3947	CHL1	CELL ADHESION MOLECULE WITH HOMOLOGY TO L1CAM (CLOSE HOMOLOG OF L1)
205294_at	5.11E-06	0.3962	BAIAP2	BAII-ASSOCIATED PROTEIN 2
213484_at	4.49E-04	0.3966	NA	.CONSENSUS INCLUDES GB:AI097640 /FEA=EST /DB_XREF=GI:3445898 /DB_XREF=

210347_s_at	3.53E-04	0.3975	BCL11A	B-CELL CLL/LYMPHOMA 11A (ZINC FINGER PROTEIN)
213793_s_at	2.02E-04	0.3978	HOMER1	HOMER HOMOLOG 1 (DROSOPHILA)
213009_s_at	1.89E-04	0.3980	TRIM37	TRIPARTITE MOTIF-CONTAINING 37
219365_s_at	5.18E-04	0.3984	CAMKV	CAM KINASE-LIKE VESICLE-ASSOCIATED
219549_s_at	4.79E-04	0.3994	RTN3	RETICULON 3
215543_s_at	4.45E-04	0.4001	LARGE	LIKE-GLYCOSYLTRANSFERASE
220235_s_at	8.63E-05	0.4004	C1ORF103	CHROMOSOME 1 OPEN READING FRAME 103
206404_at	9.04E-04	0.4006	FGF9	FIBROBLAST GROWTH FACTOR 9 (GLIA-ACTIVATING FACTOR)
221493_at	2.57E-04	0.4006	TSPYL1	TSPY-LIKE 1
213386_at	9.38E-04	0.4007	C9ORF125	CHROMOSOME 9 OPEN READING FRAME 125
212508_at	1.30E-04	0.4008	MOAP1	MODULATOR OF APOPTOSIS 1
206976_s_at	3.56E-04	0.4013	HSPH1	HEAT SHOCK 105KDA/110KDA PROTEIN 1
218751_s_at	7.75E-06	0.4018	FBXW7	F-BOX AND WD-40 DOMAIN PROTEIN 7 (ARCHIPELAGO HOMOLOG, DROSOPHILA)
218434_s_at	2.97E-04	0.4037	AACS	ACETOACETYL-COA SYNTHETASE
202439_s_at	1.89E-04	0.4041	IDS	IDURONATE 2-SULFATASE (HUNTER SYNDROME)
200734_s_at	1.49E-04	0.4048	ARF3	ADP-RIBOSYLATION FACTOR 3
213108_at	3.40E-04	0.4049	CAMK2A	CALCIUM/CALMODULIN-DEPENDENT PROTEIN KINASE (CAM KINASE) II ALPHA
204375_at	4.49E-05	0.4059	CLSTN3	CALSINTENIN 3
63305_at	5.57E-04	0.4064	PKNOX2	PBX/KNOTTED 1 HOMEODOMAIN 2
207693_at	4.88E-05	0.4064	CACNB4	CALCIUM CHANNEL, VOLTAGE-DEPENDENT, BETA 4 SUBUNIT
218725_at	3.90E-05	0.4081	SLC25A22	SOLUTE CARRIER FAMILY 25 (MITOCHONDRIAL CARRIER: GLUTAMATE), MEMBER 22
208051_s_at	3.96E-04	0.4084	PAIP1	POLY(A) BINDING PROTEIN INTERACTING PROTEIN 1
209635_at	8.97E-05	0.4094	AP1S1	ADAPTOR-RELATED PROTEIN COMPLEX 1, SIGMA 1 SUBUNIT
215149_at	2.02E-04	0.4113	NA	.CONSENSUS INCLUDES GB:AF052109.1 /DEF=HOMO SAPIENS CLONE 23927 MRNA S
214436_at	4.85E-05	0.4119	FBXL2	F-BOX AND LEUCINE-RICH REPEAT PROTEIN 2
206014_at	1.45E-04	0.4121	ACTL6B	ACTIN-LIKE 6B
202432_at	8.11E-04	0.4125	PPP3CB	PROTEIN PHOSPHATASE 3 (FORMERLY 2B), CATALYTIC SUBUNIT, BETA ISOFORM (...)
206322_at	6.63E-04	0.4157	SYN3	SYNAPSIN III
208308_s_at	2.59E-04	0.4158	GPI	GLUCOSE PHOSPHATE ISOMERASE
212928_at	1.16E-04	0.4158	TSPYL4	TSPY-LIKE 4
218952_at	5.71E-04	0.4159	PCSK1N	PROPROTEIN CONVERTASE SUBTILISIN/KEXIN TYPE 1 INHIBITOR
215716_s_at	1.07E-04	0.4164	ATP2B1	ATPASE, CA ⁺⁺ TRANSPORTING, PLASMA MEMBRANE 1
202192_s_at	2.26E-04	0.4166	GAS7	GROWTH ARREST-SPECIFIC 7
201050_at	4.26E-04	0.4183	PLD3	PHOSPHOLIPASE D FAMILY, MEMBER 3
209064_x_at	6.99E-04	0.4183	PAIP1	POLY(A) BINDING PROTEIN INTERACTING PROTEIN 1
221931_s_at	3.98E-04	0.4184	SEH1L	SEH1-LIKE (S. CEREVISIAE)
203431_s_at	8.69E-04	0.4185	RICS	RHO GTPASE-ACTIVATING PROTEIN
205122_at	7.04E-04	0.4189	TMEFF1	TRANSMEMBRANE PROTEIN WITH EGF-LIKE AND TWO FOLLISTATIN-LIKE DOMAINS 1
204684_at	3.68E-04	0.4195	NPTX1	NEURONAL PENTRAXIN 1
213234_at	6.46E-04	0.4196	KIAA1467	KIAA1467
203224_at	8.60E-05	0.4196	RFK	RIBOFLAVIN KINASE
221901_at	3.42E-05	0.4199	KIAA1644	KIAA1644 PROTEIN
208032_s_at	3.96E-04	0.4213	GRIA3	GLUTAMATE RECEPTOR, IONOTROPIC, AMPA 3

203485_at	8.85E-05	0.4214	RTN1	RETICULON 1
209956_s_at	8.29E-04	0.4227	CAMK2B	CALCIUM/CALMODULIN-DEPENDENT PROTEIN KINASE (CAM KINASE) II BETA
205462_s_at	7.98E-04	0.4244	HPCAL1	HIPPOCALCIN-LIKE 1
216967_at	6.28E-04	0.4245	GAP43	GROWTH ASSOCIATED PROTEIN 43
203402_at	7.10E-04	0.4246	KCNAB2	POTASSIUM VOLTAGE-GATED CHANNEL, SHAKER-RELATED SUBFAMILY, BETA MEMBER...
219688_at	5.01E-04	0.4252	BBS7	BARDET-BIEDL SYNDROME 7
203680_at	2.71E-05	0.4257	PRKAR2B	PROTEIN KINASE, CAMP-DEPENDENT, REGULATORY, TYPE II, BETA
221482_s_at	8.92E-05	0.4260	ARPP-19	CYCLIC AMP PHOSPHOPROTEIN, 19 KD
203618_at	3.06E-04	0.4262	FAIM2	FAS APOPTOTIC INHIBITORY MOLECULE 2
218786_at	3.42E-06	0.4262	NT5DC3	5'-NUCLEOTIDASE DOMAIN CONTAINING 3
204584_at	5.28E-04	0.4267	L1CAM	L1 CELL ADHESION MOLECULE
210380_s_at	1.31E-04	0.4272	CACNA1G	CALCIUM CHANNEL, VOLTAGE-DEPENDENT, ALPHA 1G SUBUNIT
207869_s_at	8.94E-04	0.4277	CACNA1G	CALCIUM CHANNEL, VOLTAGE-DEPENDENT, ALPHA 1G SUBUNIT
219277_s_at	9.28E-04	0.4282	OGDHL	OXOGLUTARATE DEHYDROGENASE-LIKE
212213_x_at	3.85E-04	0.4289	OPA1	OPTIC ATROPHY 1 (AUTOSOMAL DOMINANT)
219225_at	8.66E-05	0.4290	PGBD5	PIGGYBAC TRANSPOSABLE ELEMENT DERIVED 5
205738_s_at	4.25E-04	0.4291	FABP3	FATTY ACID BINDING PROTEIN 3, MUSCLE AND HEART (MAMMARY-DERIVED GROWTH...
206114_at	6.11E-04	0.4291	EPHA4	EPH RECEPTOR A4
203738_at	5.32E-04	0.4294	FLJ11193	HYPOTHETICAL PROTEIN FLJ11193
205293_x_at	1.35E-04	0.4309	BAIAP2	BAI1-ASSOCIATED PROTEIN 2
201556_s_at	4.76E-04	0.4309	VAMP2	VESICLE-ASSOCIATED MEMBRANE PROTEIN 2 (SYNAPTOBREVIN 2)
214023_x_at	1.31E-04	0.4316	TUBB2B	TUBULIN, BETA 2B
220462_at	1.15E-05	0.4326	TAIP-2	TGF-BETA INDUCED APOTOSIS PROTEIN 2
218935_at	5.14E-04	0.4327	EHD3	EH-DOMAIN CONTAINING 3
210675_s_at	3.53E-04	0.4327	PTPRR	PROTEIN TYROSINE PHOSPHATASE, RECEPTOR TYPE, R
215172_at	9.43E-04	0.4330	RP11-142117.1/PTP N20A	PROTEIN TYROSINE PHOSPHATASE, NON-RECEPTOR TYPE 20B
218613_at	2.66E-04	0.4335	PSD3	PLECKSTRIN AND SEC7 DOMAIN CONTAINING 3
213045_at	2.22E-05	0.4338	MAST3	MICROTUBULE ASSOCIATED SERINE/THREONINE KINASE 3
203389_at	6.81E-04	0.4339	KIF3C	KINESIN FAMILY MEMBER 3C
205590_at	8.73E-05	0.4340	RASGRP1	RAS GUANYL RELEASING PROTEIN 1 (CALCIUM AND DAG-REGULATED)
206339_at	5.98E-04	0.4346	CART	COCAINE- AND AMPHETAMINE-REGULATED TRANSCRIPT
212233_at	1.45E-04	0.4354	MAP1B	MICROTUBULE-ASSOCIATED PROTEIN 1B
212552_at	7.71E-05	0.4362	HPCAL1	HIPPOCALCIN-LIKE 1
211056_s_at	2.95E-04	0.4370	SRD5A1	STEROID-5-ALPHA-REDUCTASE, ALPHA POLYPEPTIDE 1 (3-OXO-5 ALPHA-STEROID ...
208977_x_at	5.44E-05	0.4377	TUBB2C	TUBULIN, BETA 2C
214997_at	5.90E-04	0.4400	GOLGA1	GOLGI AUTOANTIGEN, GOLGIN SUBFAMILY A, 1
218546_at	1.62E-04	0.4408	C1ORF115	CHROMOSOME 1 OPEN READING FRAME 115
210078_s_at	8.24E-04	0.4424	KCNAB1	POTASSIUM VOLTAGE-GATED CHANNEL, SHAKER-RELATED SUBFAMILY, BETA MEMBER...
206215_at	3.18E-05	0.4435	OPCML	OPIOID BINDING PROTEIN/CELL ADHESION MOLECULE-LIKE
203769_s_at	8.45E-04	0.4445	STS	STEROID SULFATASE (MICROSOMAL), ARYLSULFATASE C, ISOZYME S
218501_at	3.64E-04	0.4449	ARHGEF3	RHO GUANINE NUCLEOTIDE EXCHANGE FACTOR (GEF) 3

203855_at	3.31E-04	0.4450	WDR47	WD REPEAT DOMAIN 47
217992_s_at	8.85E-04	0.4463	EFHD2	EF-HAND DOMAIN FAMILY, MEMBER D2
204287_at	2.24E-05	0.4468	SYNGR1	SYNAPTOGYRIN 1
218259_at	5.63E-05	0.4484	MKL2	MKL/MYOCARDIN-LIKE 2
213609_s_at	6.13E-04	0.4487	SEZ6L	SEIZURE RELATED GENE 6 (MOUSE)-LIKE
219338_s_at	3.87E-04	0.4491	LRRC49	LEUCINE RICH REPEAT CONTAINING 49
204966_at	8.35E-04	0.4509	BAI2	BRAIN-SPECIFIC ANGIOGENESIS INHIBITOR 2
212372_at	1.11E-04	0.4511	MYH10	MYOSIN, HEAVY POLYPEPTIDE 10, NON-MUSCLE
203745_at	8.53E-04	0.4515	HCCS	HOLOCYTOCHROME C SYNTHASE (CYTOCHROME C HEME-LYASE)
213333_at	3.47E-04	0.4537	MDH2	MALATE DEHYDROGENASE 2, NAD (MITOCHONDRIAL)
40472_at	8.87E-04	0.4545	AGPAT7	1-ACYLGLYCEROL-3-PHOSPHATE O-ACYLTRANSFERASE 7 (LYSOPHOSPHATIDIC ACID ...
214822_at	5.60E-04	0.4549	FAM5B	FAMILY WITH SEQUENCE SIMILARITY 5, MEMBER B
209794_at	2.81E-04	0.4586	SRGAP3	SLIT-ROBO RHO GTPASE ACTIVATING PROTEIN 3
210404_x_at	7.20E-04	0.4593	CAMK2B	CALCIUM/CALMODULIN-DEPENDENT PROTEIN KINASE (CAM KINASE) II BETA
213676_at	9.83E-04	0.4593	RP11-444E17.5/AA RSL	ALANYL-TRNA SYNTHETASE LIKE
206906_at	4.39E-06	0.4599	ICAM5	INTERCELLULAR ADHESION MOLECULE 5, TELENCEPHALIN
213726_x_at	9.14E-05	0.4606	TUBB2C	TUBULIN, BETA 2C
221933_at	2.49E-04	0.4608	NLGN4X	NEUROLIGIN 4, X-LINKED
202191_s_at	1.23E-04	0.4609	GAS7	GROWTH ARREST-SPECIFIC 7
219637_at	4.19E-04	0.4619	ARMC9	HYPOTHETICAL PROTEIN FLJ23510
218657_at	1.70E-04	0.4625	RAPGEFL1	RAP GUANINE NUCLEOTIDE EXCHANGE FACTOR (GEF)-LIKE 1
203111_s_at	5.09E-04	0.4627	PTK2B	PTK2B PROTEIN TYROSINE KINASE 2 BETA
214306_at	5.65E-04	0.4628	OPA1	OPTIC ATROPHY 1 (AUTOSOMAL DOMINANT)
214655_at	1.94E-04	0.4640	GPR6	G PROTEIN-COUPLED RECEPTOR 6
212611_at	7.31E-04	0.4643	DTX4	DELTEX 4 HOMOLOG (DROSOPHILA)
209205_s_at	9.13E-04	0.4647	LMO4	LIM DOMAIN ONLY 4
204505_s_at	5.81E-04	0.4657	EPB49	ERYTHROCYTE MEMBRANE PROTEIN BAND 4.9 (DEMATEIN)
202279_at	6.65E-04	0.4657	C14ORF2	CHROMOSOME 14 OPEN READING FRAME 2
203864_s_at	3.04E-04	0.4662	ACTN2	ACTININ, ALPHA 2
202457_s_at	7.10E-05	0.4663	PPP3CA	PROTEIN PHOSPHATASE 3 (FORMERLY 2B), CATALYTIC SUBUNIT, ALPHA ISOFORM ...
47560_at	4.75E-04	0.4679	LPHN1	LATROPHILIN 1
211006_s_at	1.92E-05	0.4683	KCNB1	POTASSIUM VOLTAGE-GATED CHANNEL, SHAB-RELATED SUBFAMILY, MEMBER 1
204604_at	6.38E-04	0.4687	PFTK1	PFTAIRE PROTEIN KINASE 1
206342_x_at	1.19E-04	0.4701	IDS	IDURONATE 2-SULFATASE (HUNTER SYNDROME)
201972_at	3.11E-04	0.4709	ATP6V1A	ATPASE, H+ TRANSPORTING, LYSOSOMAL 70KDA, V1 SUBUNIT A
209281_s_at	3.04E-04	0.4713	ATP2B1	ATPASE, CA++ TRANSPORTING, PLASMA MEMBRANE 1
213242_x_at	2.30E-04	0.4721	KIAA0284	KIAA0284
212727_at	2.92E-04	0.4723	DLG3	DISCS, LARGE HOMOLOG 3 (NEUROENDOCRINE-DLG, DROSOPHILA)
212383_at	9.27E-06	0.4728	ATP6V0A1	ATPASE, H+ TRANSPORTING, LYSOSOMAL V0 SUBUNIT A1
201557_at	3.15E-04	0.4731	VAMP2	VESICLE-ASSOCIATED MEMBRANE PROTEIN 2 (SYNAPTOBREVIN 2)

219668_at	1.45E-04	0.4734	GDAP1L1	GANGLIOSIDE-INDUCED DIFFERENTIATION-ASSOCIATED PROTEIN 1-LIKE 1
216184_s_at	3.43E-04	0.4745	RIMS1	REGULATING SYNAPTIC MEMBRANE EXOCYTOSIS 1
219005_at	5.50E-04	0.4752	C19ORF4	CHROMOSOME 19 OPEN READING FRAME 4
212646_at	7.96E-04	0.4755	RAFTLIN	RAFT-LINKING PROTEIN
205807_s_at	6.58E-05	0.4758	TUFT1	TUFTELIN 1
212880_at	1.51E-04	0.4763	WDR7	WD REPEAT DOMAIN 7
215423_at	2.90E-04	0.4767	NA	.CONSENSUS INCLUDES GB:U52827.1 /DEF=HOMO SAPIENS CRI-DU-CHAT REGION M
209871_s_at	4.06E-04	0.4768	APBA2	AMYLOID BETA (A4) PRECURSOR PROTEIN-BINDING, FAMILY A, MEMBER 2 (X11-L...
213186_at	8.28E-04	0.4769	DZIP3	ZINC FINGER DAZ INTERACTING PROTEIN 3
201082_s_at	9.20E-04	0.4771	DCTN1	DYNACTIN 1 (P150, GLUED HOMOLOG, DROSOPHILA)
213055_at	5.90E-05	0.4775	CD47	CD47 ANTIGEN (RH-RELATED ANTIGEN, INTEGRIN-ASSOCIATED SIGNAL TRANSDUCE...
219170_at	2.77E-04	0.4778	FSD1	FIBRONECTIN TYPE III AND SPRY DOMAIN CONTAINING 1
202254_at	9.31E-05	0.4807	SIPA1L1	SIGNAL-INDUCED PROLIFERATION-ASSOCIATED 1 LIKE 1
213421_x_at	2.48E-04	0.4812	PRSS3	PROTEASE, SERINE, 3 (MESOTRYPSIN)
217841_s_at	2.84E-04	0.4835	PPME1	PROTEIN PHOSPHATASE METHYLESTERASE 1
206888_s_at	2.94E-04	0.4844	ARHGDIG	RHO GDP DISSOCIATION INHIBITOR (GDI) GAMMA
213834_at	3.75E-04	0.4846	IQSEC3	IQ MOTIF AND SEC7 DOMAIN 3
204735_at	1.71E-04	0.4854	PDE4A	PHOSPHODIESTERASE 4A, CAMP-SPECIFIC (PHOSPHODIESTERASE E2 DUNCE HOMOLO...
209914_s_at	6.09E-04	0.4857	NRXN1	NEUREXIN 1
212703_at	2.25E-04	0.4858	TLN2	TALIN 2
213276_at	7.06E-05	0.4866	CAMK2B	CALCIUM/CALMODULIN-DEPENDENT PROTEIN KINASE (CAM KINASE) II BETA
218597_s_at	2.38E-04	0.4867	C10ORF70	CHROMOSOME 10 OPEN READING FRAME 70
215321_at	3.10E-04	0.4871	RPIB9	RAP2-BINDING PROTEIN 9
213832_at	8.50E-04	0.4876	NA	.CONSENSUS INCLUDES GB:AA530995 /FEA=EST /DB_XREF=GI:2273701 /DB_XREF=
212736_at	4.44E-04	0.4882	C16ORF45	CHROMOSOME 16 OPEN READING FRAME 45
218539_at	2.04E-04	0.4892	FBXO34	F-BOX PROTEIN 34
205722_s_at	2.10E-04	0.4894	GFRA2	GDNF FAMILY RECEPTOR ALPHA 2
214668_at	1.61E-04	0.4899	C13ORF1	CHROMOSOME 13 OPEN READING FRAME 1
212223_at	4.28E-04	0.4910	IDS	IDURONATE 2-SULFATASE (HUNTER SYNDROME)
207753_at	4.32E-04	0.4911	ZNF304	ZINC FINGER PROTEIN 304
201561_s_at	3.94E-05	0.4937	CLSTN1	CALSYNTENIN 1
219288_at	3.45E-04	0.4943	C3ORF14	CHROMOSOME 3 OPEN READING FRAME 14
208732_at	4.06E-04	0.4947	RAB2	RAB2, MEMBER RAS ONCOGENE FAMILY
204763_s_at	9.48E-05	0.4955	GNAO1	GUANINE NUCLEOTIDE BINDING PROTEIN (G PROTEIN), ALPHA ACTIVATING ACTIV...
218906_x_at	2.34E-04	0.4969	KLC2	KINESIN LIGHT CHAIN 2
209793_at	7.30E-04	0.4977	GRIA1	GLUTAMATE RECEPTOR, IONOTROPIC, AMPA 1
207227_x_at	3.87E-04	0.4988	RFPL2	RET FINGER PROTEIN-LIKE 2
201433_s_at	9.78E-04	0.4990	PTDSS1	PHOSPHATIDYLSERINE SYNTHASE 1
217897_at	4.62E-04	0.4990	FXYP6	FXYP DOMAIN CONTAINING ION TRANSPORT REGULATOR 6
214848_at	2.02E-04	0.4994	YWHAZ	TYROSINE 3-MONOOXYGENASE/TRYPHTOPHAN 5-MONOOXYGENASE ACTIVATION PROTEIN...
207556_s_at	6.49E-04	0.4997	DGKZ	DIACYLGLYCEROL KINASE, ZETA 104KDA

6 FTL-D-U cases with progranulin gene abnormalities (*GRN*+ FTL-D-U) were compared to 8 normal controls on Affymetrix U133A microarrays. A statistical cutoff of $p < 0.001$ was used to identify genes with differential expression, which were then ranked based on fold change (FC, disease/normal). All genes with fold change > 2 , identified by GeneSymbol and name, are shown for frontal cortex samples.

Supplementary Table 4. More mRNA transcripts are differentially expressed between *GRN+* and *GRN-* FTLD-U brain than between *GRN-* FTLD-U brain and control.

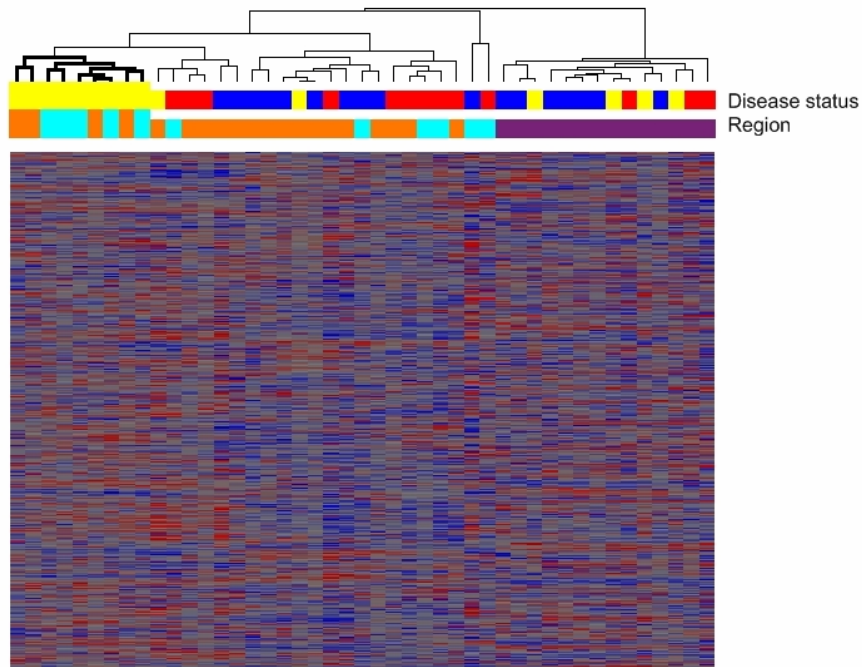
	Samples	Overall probes	Increased in <i>GRN-</i> FTLD-U	Decreased in <i>GRN-</i> FTLD-U	FDR
<i>GRN+</i> FTLD-U vs. <i>GRN-</i> FTLD-U <i>Frontal cortex</i>	6 vs. 10	208 (89)	140 (78)	68 (11)	12.5%
<i>GRN-</i> FTLD-U vs. Normal <i>Frontal cortex</i>	10 vs. 8	154 (40)	94 (33)	60 (7)	13.8%

Numbers reflect probe sets with differential expression (Overall probes), increased expression in *GRN-* FTLD-U (Increased in *GRN-* FTLD-U) or decreased expression in *GRN-* FTLD-U (Decreased in *GRN-* FTLD-U) at $p < 0.001$. The total number meeting this statistical threshold is shown, while the number of probes meeting both a $p < 0.001$ criterion and fold change > 2 criterion appears in parentheses.

FDR = false discovery rate. Determined by class permutation analysis (similar results were obtained with calculations based on nominal P-value).

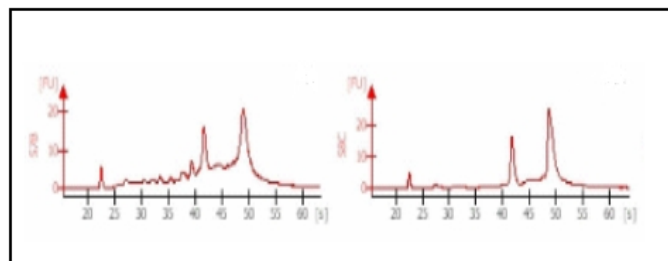
GRN+ FTLD-U = FTLD-U cases with progranulin gene abnormalities

GRN- FTLD-U = FTLD-U cases without progranulin gene abnormalities.



Supplementary Figure 1.

Hierarchical dendrogram produced by clustering of expression levels for 45 brain samples (columns) and 22,277 transcripts (rows), using Spearman correlation coefficients. In this analysis, only Sampathu Type 3 FTLN-U cases (19) were used for analysis. As seen in previous analyses, *GRN+* FTLN-U samples (yellow) from hippocampus (teal) and frontal cortex (orange) fell into one branch (bold), indicating a global expression signature that was distinct from *GRN-* FTLN-U (red) and normal controls (blue). Also corroborating prior analyses with the full dataset, cerebellar samples (purple) had a distinct expression profile. Heatmap tiles show standardized expression levels of individual genes with red denoting high expression, grey denoting medium expression, and blue denoting low expression levels.



Supplementary Figure 2.

Shown are representative Agilent Bioanalyzer traces of RNA samples ranging from worst quality (left) to best quality (right). All samples used had a 260/280 ratio of >1.9 , with sharp ribosomal RNA peaks, virtually undetectable low molecular weight RNA, and RIN numbers >8 .

Supplementary Table 5. Primers used for quantitative reverse transcription PCR (QRT-PCR).

Gene Name	Applied Biosystems Product ID	NCBI Reference Sequence	Exon Boundary	Assay Location	Amplicon Length
Glycine receptor beta subunit (GLRB)	Hs00168151_m1	<u>NM_000824.2</u>	8-9	1046	54
Metabotropic glutamate receptor 5 (GRM5)	Hs00168275_m1	<u>NM_000842.1</u>	6-7	1838	80
Histone deacetylase 1 (HDAC1)	Hs00606262_g1	<u>NM_004964.2</u>	12-13	1436	149
Heat shock protein 2 70kD (HSPA2)	Hs00356607_g1	<u>NM_021979.2</u>	2-2	1252	74
Serotonin receptor 2A (HTR2A)	Hs00167241_m1	<u>NM_000621.2</u>	1-2	546	77
Inhibitor of DNA binding 4 (ID4)	Hs00155465_m1	<u>NM_001546.2</u>	1-2	810	54
Notch homolog (Drosophila) 2 (NOTCH2)	Hs00225747_m1	<u>NM_024408.2</u>	23-24	4153	73
TAR DNA binding protein 43 (TDP-43)	Hs00540114_s1	<u>NM_007375.3</u>	6-6	3369	76
Beta-actin (ACTB)	Hs03023880_g1	<u>NM_001101.2</u>	6-6	1144	139
Cyclophilin A (PPIA)	Hs99999904_m1	<u>NM_021130.3</u>	4-5	435	98

All primers for QRT-PCR were ordered from Applied Biosystems (Taqman Gene Expression Assay System) and assessed for comparable efficiency using a standard dilution curve.