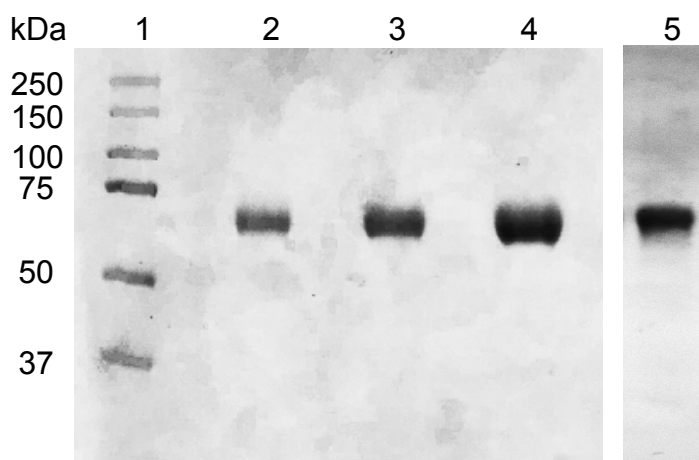


Effect of Recombinant Human Lecithin-cholesterol:acyltransferase Infusion on Lipoprotein Metabolism in Mice

Xavier Rousset, Boris Vaisman, Bruce Auerbach, Brian R. Krause,
Reyn Homan, John Stonik, Gyorgy Csako, Robert Shamburek, Alan T. Remaley

Supplemental Figure 1



Supplemental Figure 1. SDS-PAGE analysis of purified rLCAT.

Purified rLCAT was analysed on a NuPAGE 10% Bis-Tris SDS-PAGE gel and stain with Coomassie Blue R250 (Lanes 1-4) or detected by immunoblotting (lane 5). Lane 1: molecular weight markers; lane 2: 1 μ g of rLCAT; lane 3: 2 μ g of rLCAT; Lane 4: 4 μ g of rLCAT. Lane 5: 0.5 μ g of rLCAT immunoblotted and detected with anti-human LCAT antibody.