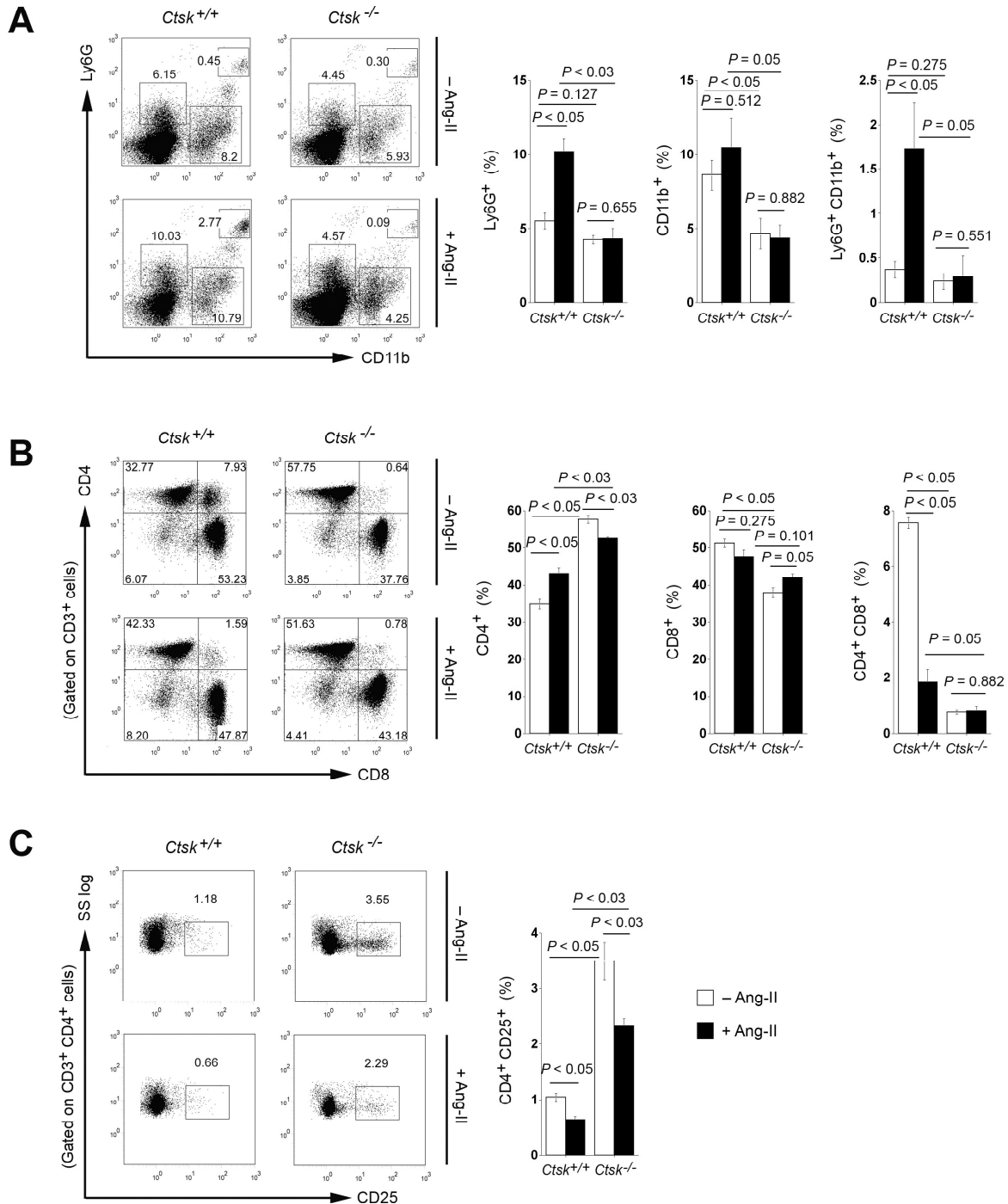


## Supplement Material

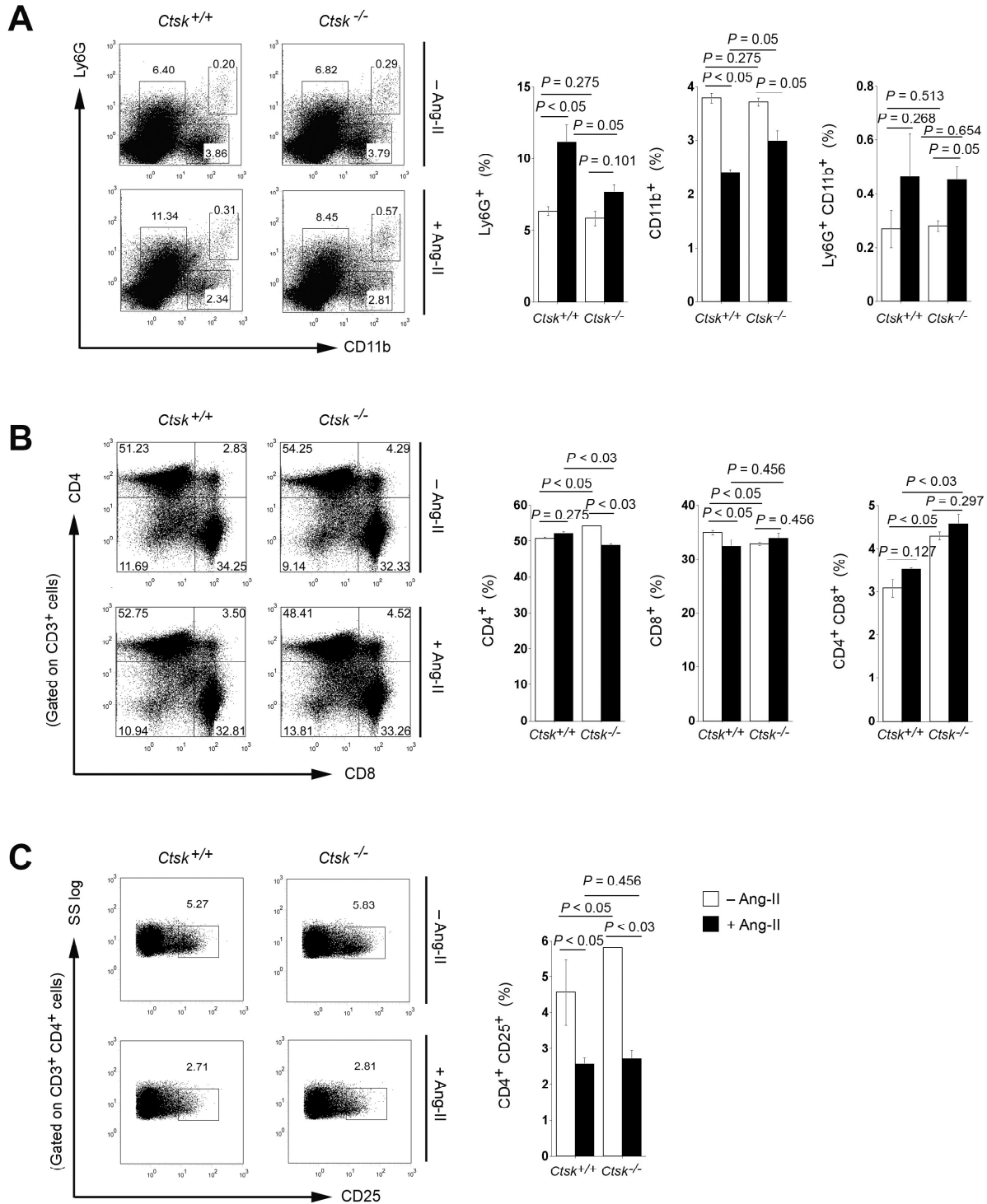
### **Cathepsin K Deficiency Reduces Elastase Perfusion-Induced Abdominal Aortic Aneurysms in Mice**

Jiusong Sun; Galina K. Sukhova; Jie Zhang; Han Chen; Sara Sjöberg; Peter Libby; Mingcan Xia; Na Xiong; Bruce D. Gelb; Guo-Ping Shi

From the Department of Medicine, Brigham and Women's Hospital, Harvard Medical School, Boston, MA (J.S., G.K.S., J.Z., H.C., S.S., P.L., G.-P.S.); the Department of Veterinary and Biomedical Sciences, The Pennsylvania State University, University Park, PA (M.X., N.X.); and the Departments of Pediatrics and Genetics & Genomic Sciences, Mount Sinai School of Medicine, New York, NY (B.D.G.)



**Supplemental Figure I.** FACS characterization of blood leukocytes from *Ctsk*<sup>+/+</sup> mice and *Ctsk*<sup>-/-</sup> mice treated with and without Ang-II. **A.** Ly6G<sup>+</sup>, CD11b<sup>+</sup>, and Ly6G<sup>+</sup>CD11b<sup>+</sup> cell percentages. **B.** CD3<sup>+</sup>CD4<sup>+</sup>, CD3<sup>+</sup>CD8<sup>+</sup>, CD3<sup>+</sup>CD4<sup>+</sup>CD8<sup>+</sup> cell percentages. **C.** CD3<sup>+</sup>CD4<sup>+</sup>CD25<sup>+</sup> cell percentage. SS log: side scatter log value. Representative FACS for each genotype and treatment is shown to the left. Data are mean  $\pm$  SE from 3~5 mice per group.  $P < 0.05$  is considered statistically significant; Mann-Whitney *U* test.



**Supplemental Figure II.** FACS characterization of spleen leukocytes from *Ctsk*<sup>+/+</sup> mice and *Ctsk*<sup>-/-</sup> mice treated with and without Ang-II. **A.** Ly6G<sup>+</sup>, CD11b<sup>+</sup>, and Ly6G<sup>+</sup>CD11b<sup>+</sup> cell percentages. **B.** CD3<sup>+</sup>CD4<sup>+</sup>, CD3<sup>+</sup>CD8<sup>+</sup>, CD3<sup>+</sup>CD4<sup>+</sup>CD8<sup>+</sup> cell percentages. **C.** CD3<sup>+</sup>CD4<sup>+</sup>CD25<sup>+</sup> cell percentage. SS log: side scatter log value. Representative FACS for each genotype and treatment is shown to the left. Data are mean ± SE from 3~5 mice per group. *P* < 0.05 is considered statistically significant; Mann-Whitney *U* test.