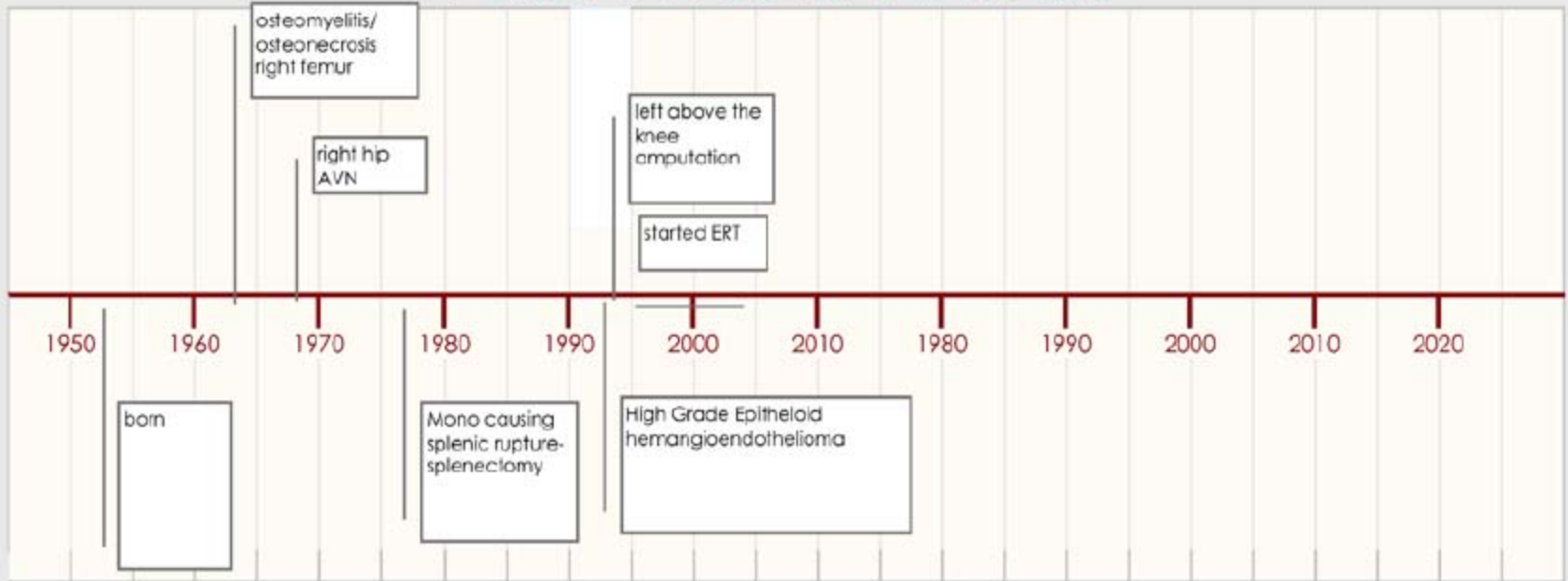
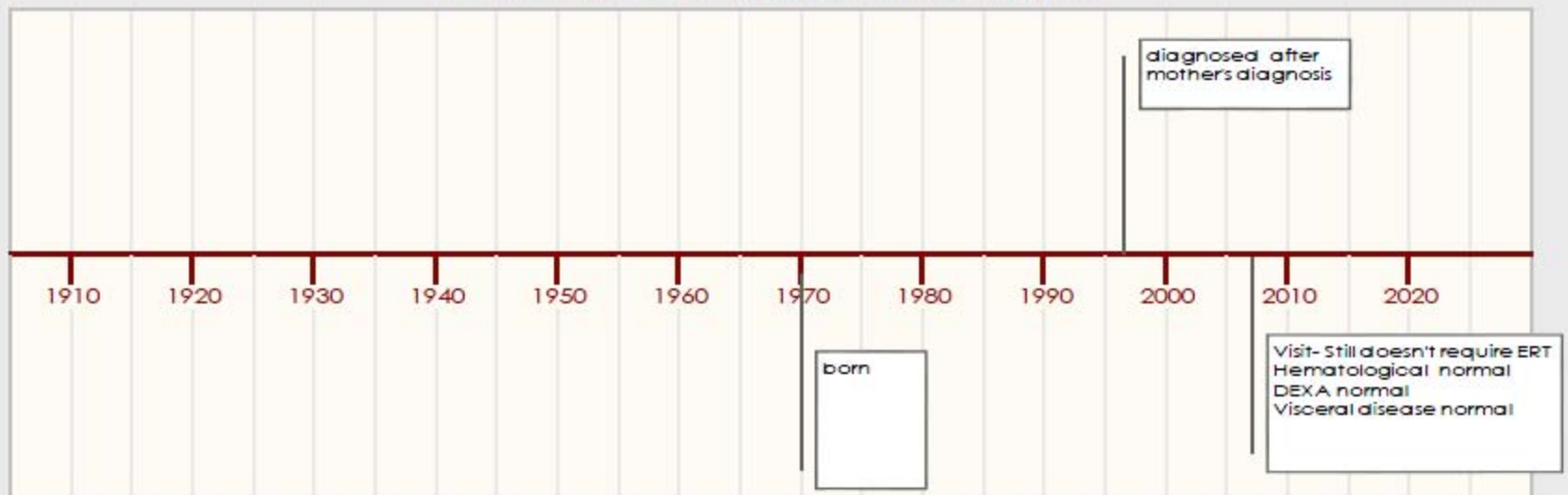
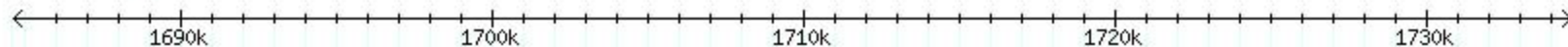
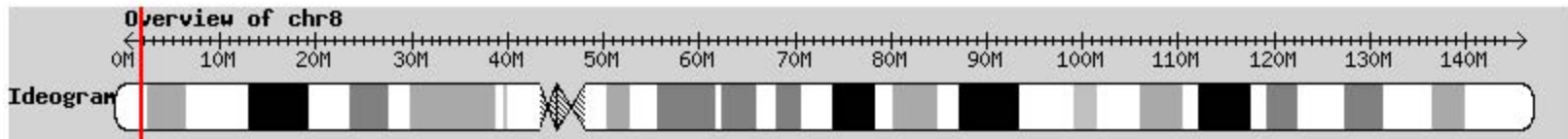


Patient A-Severe Disease

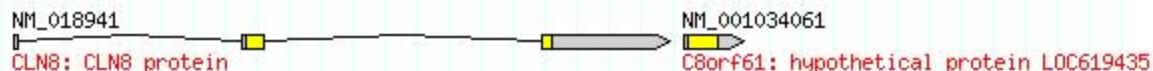


Patient B-Mild Disease



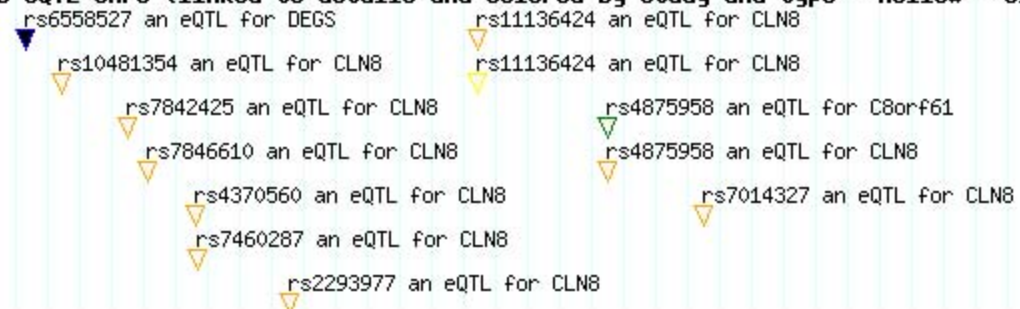


Entrez genes



- Schadt et al. (2007): $-\log_{10}(P)$, liver, 427 ids, European descent
- Myers et al. (2007): $-\log_{10}(P)$, cortex from control brain, 279 ids, European descent
- Stranger et al. (2007): $-\log_{10}(P)$, LCLs, 210 HAPMAP ids, 4 single populations.
- Veyrieras et al. (2008): $-\log_{10}(P)$, LCLs, 210 HAPMAP ids, multi-population.
- Veyrieras et al. (2008): posterior probability, LCLs, 210 HAPMAP ids, multi-population.
- Pickrell et al. (2010): $-\log_{10}(P)$, LCLs, 69 Nigerian HAPMAP ids, RNA-Seq for eQTLs.
- Pickrell et al. (2010): $-\log_{10}(P)$, LCLs, 69 Nigerian HAPMAP ids, RNA-Seq for splicing QTLs.
- Montgomery et al. (2010): $-\log_{10}(P)$, LCLs, 60 European HAPMAP ids, RNA-Seq for transcript QTLs.
- Zeller et al. (2010): $-\log_{10}(P)$, Monocytes, 1,490 ids recruited in Germany.
- Montgomery et al. (2010): $-\log_{10}(P)$, LCLs, 60 European HAPMAP ids, RNA-Seq for exon QTLs.
- Dinas et al. (2009): $-\log_{10}(P)$, Fibroblasts, 75 Europeans
- Dinas et al. (2009): $-\log_{10}(P)$, LCLs, 75 Europeans
- Dinas et al. (2009): $-\log_{10}(P)$, T-cells, 75 Europeans

All putative eQTL SNPs (linked to details and colored by study and type - Hollow = cis; Solid = trans)



Relative expression in normal human tissues

