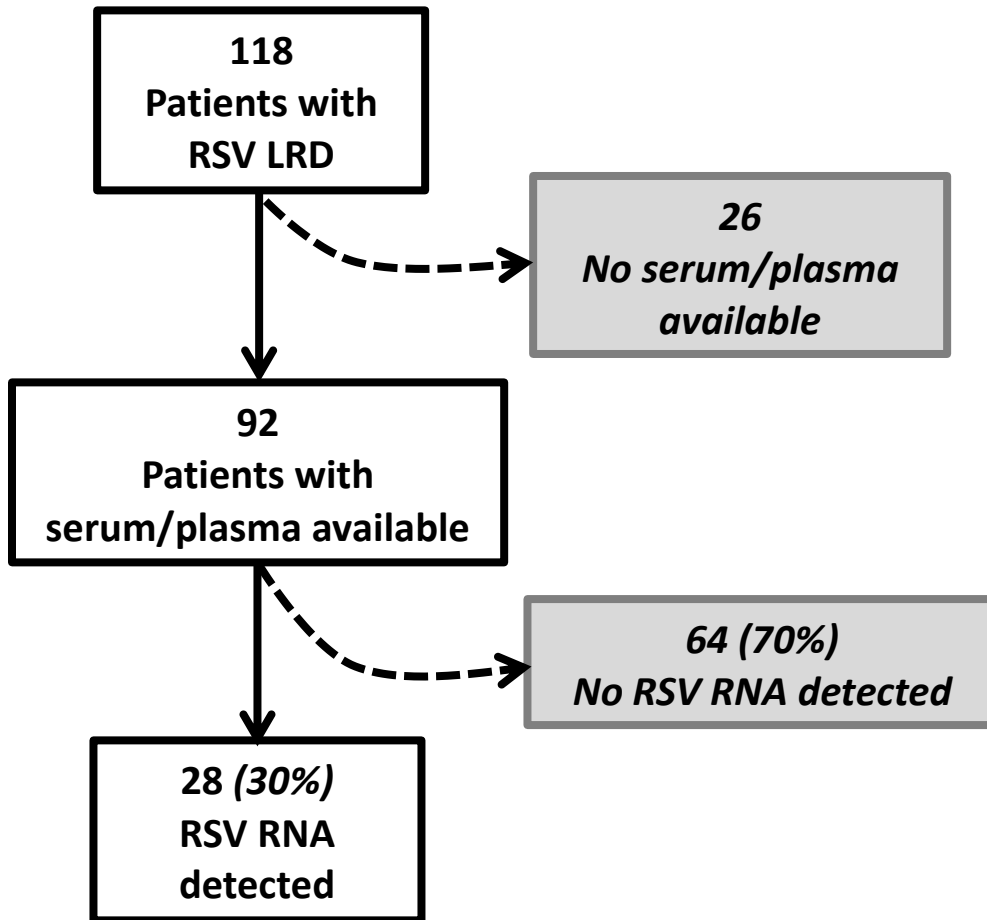


Supplemental Table 1: Univariate analyses of risk factors for overall mortality and pulmonary death by day 90 after RSV LRD (N = 118)				
Covariates	Overall mortality		Pulmonary death	
	HR 95% C.I.	p-value	HR 95% C.I.	p-value
Transplant year				
1989-1997	1.00		1.00	
1998-2010	0.48 (0.27-0.84)	0.011	0.42 (0.21-0.84)	0.015
Transplant year as continuous covariate	0.94 (0.89-0.98)	0.008	0.92 (0.86-0.97)	0.005
Age at transplant as continuous covariate	1.02 (1.00-1.03)	0.073	1.01 (0.99-1.03)	0.207
Cell source:				
PBSC	1.00		1.00	
BM/CB	2.88 (1.57-5.29)	<.001	2.80 (1.37-5.75)	0.005
Donor type				
Autologous	1.00		1.00	
Allogeneic	1.53 (0.69-3.39)	0.291	2.04 (0.77-5.40)	0.149
Conditioning regimen				
MA + TBI (≥12Gy)	1.00		1.00	
MA +/- low TBI	1.04 (0.60-1.81)	0.89	0.87 (0.44-1.69)	0.676
Non-myeloablative	0.44 (0.17-1.13)	0.088	0.47 (0.16-1.35)	0.161
WBC count, 10⁶/L				
>1000	1.00		1.00	
≤1000	2.07 (1.22-3.49)	0.007	1.98 (1.06-3.69)	0.031
Lymphocyte count, 10⁶/L				
≥100	1.00		1.00	
<100	1.48 (0.86-2.56)	0.161	1.42 (0.74-2.72)	0.291
Neutrophil count, 10⁶/L				
≥100	1.00		1.00	
<100	1.58 (0.88-2.82)	0.124	1.49 (0.74-2.98)	0.262
Monocyte count, 10⁶/L				
≥100	1.00		1.00	
<100	2.33 (1.29-4.20)	0.005	2.45 (1.22-4.90)	0.012
Platelet count, 10⁶/L				
≥10000	1.00		1.00	
<10000	1.97 (1.16-3.34)	0.012	1.96 (1.05-3.67)	0.034
Day of RSV LTD following HCT				
≥30	1.00		1.00	
<30	1.49 (0.88-2.52)	0.137	1.59 (0.85-2.95)	0.144
Copathogen				
None	1.00		1.00	
Any copathogen	1.96 (1.16-3.32)	0.012	1.49 (0.80-2.78)	0.209
Oxygen at diagnosis of LRD				
None/≤2L	1.00		1.00	
>2L/Ventilator	2.27 (1.34-3.86)	0.002	2.97 (1.56-5.64)	<.001
Mechanical ventilation as time-	5.08 (2.98-8.66)	<.001	6.82 (3.62-12.8)	<.001

dependent				
Steroid use at diagnosis of LRD				
≤2 mg/kg	1.00		1.00	
>2 mg/kg	3.25 (1.66-6.33)	<.001	3.63 (1.71-7.70)	<.001
Steroid use >2mg/kg as time-dependent	3.98 (1.98-8.00)	<.001	4.24 (1.93-9.34)	<.001
Palivizumab Treatment				
No	1.00		1.00	
Yes	0.59 (0.33-1.05)	0.075	0.43 (0.21-0.91)	0.027
Preemptive ribavirin prior to LRD				
None	1.00		1.00	
<5 days	0.58 (0.21-1.60)	0.292	0.20 (0.03-1.43)	0.109
≥5 days	0.38 (0.14-1.05)	0.061	0.39 (0.12-1.25)	0.113
Ribavirin treatment for LRD				
None	1.00		1.00	
Systemic	0.53 (0.22-1.28)	0.16	0.40 (0.14-1.14)	0.087
Aerosolized	0.27 (0.14-0.51)	<.001	0.22 (0.11-0.46)	<.001
Ribavirin treatment as time-dependent	0.35 (0.18-0.66)	0.001	0.29 (0.14-0.59)	<.001
FEV/FVC % prior to RSV				
≥70	1.00		1.00	
<70	0.55 (0.25-1.21)	0.135	0.44 (0.15-1.23)	0.115
TLC % prior to RSV LRD				
≥80	1.00		1.00	
<80	0.94 (0.23-3.88)	0.933	1.29 (0.31-5.36)	0.73
IVIG				
None	1.00		1.00	
Weekly	0.97 (0.51-1.85)	0.934	0.82 (0.37-1.82)	0.621
High	0.84 (0.41-1.71)	0.633	0.93 (0.42-2.06)	0.85
Abbreviations: PBSC, peripheral blood stem cell; BM, bone marrow; CB, cord blood; MA, myeloablative; TBI, total body irradiation; IVIG, intravenous immunoglobulin.				

Supplemental Figure 1: Cohort description

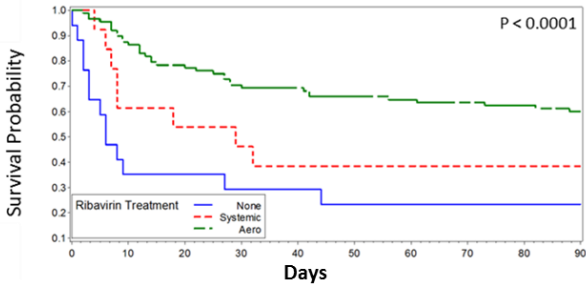
Supplemental Figure 1



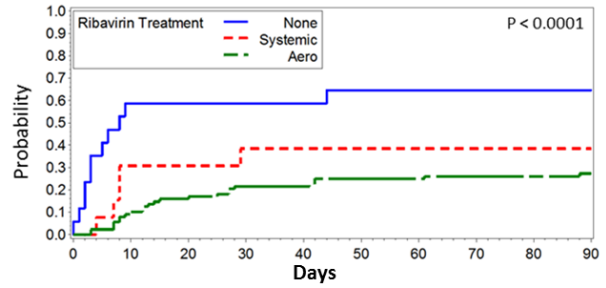
Supplemental Figure 2: Unadjusted Kaplan-Meier curves for overall survival and cumulative incidence curves for pulmonary death for entire cohort and subgroups at day 90 following RSV LRD. P-values derived from Cox proportional hazard models. **Supplemental Figure 2A:** Overall survival at day 90 following RSV LRD by ribavirin treatment (N = 118). **Supplemental Figure 2B:** Cumulative incidence of pulmonary death at day 90 following RSV LRD by ribavirin treatment (N= 118). **Supplemental Figure 2C:** Overall survival at day 90 following RSV LRD by oxygen requirement at diagnosis in patients receiving no ribavirin (YES = >2L/Ventilator, NO = None/≤2L) (N = 17). **Supplemental Figure 2D:** Cumulative incidence of pulmonary death at day 90 following RSV LRD by oxygen requirement at diagnosis in patients receiving no ribavirin (N = 17). **Supplemental Figure 2E:** Overall survival at day 90 following RSV LRD by oxygen requirement in patients receiving systemic ribavirin (N = 13). **Supplemental Figure 2F:** Cumulative incidence of pulmonary death at day 90 following RSV LRD by oxygen requirement in patients receiving systemic ribavirin (N = 13).

Supplemental Figure 2

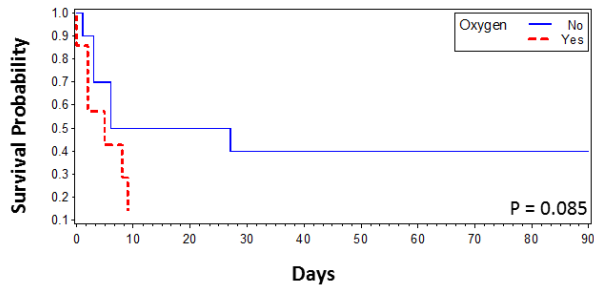
2A



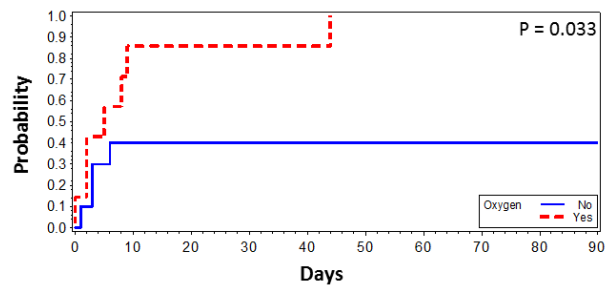
2B



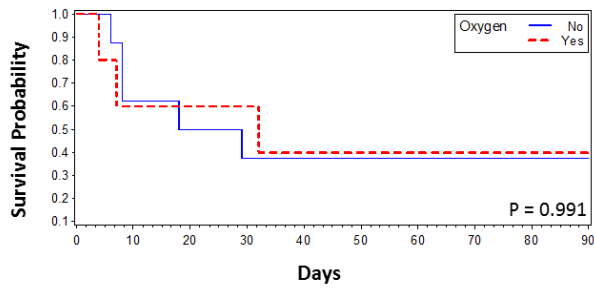
2C



2D



2E



2F

