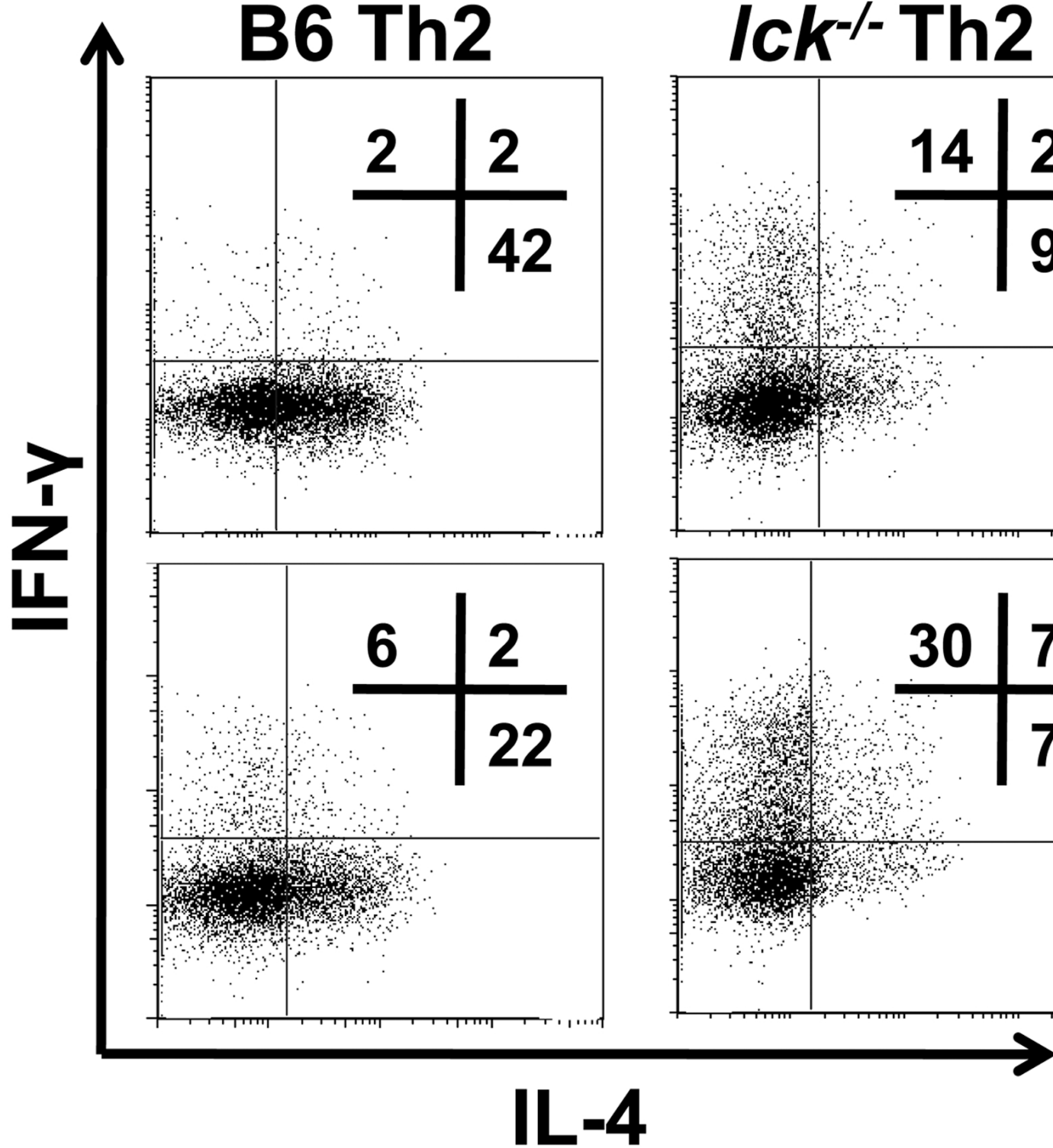


Supplemental Figure 1: *The Th2 defect in lck^{-/-} cells becomes more pronounced with age.* Splenic CD4⁺ cells from mice ages 6 weeks and 1 year were stimulated under Th2 conditions for 7 days and analyzed for IL-4 and IFN- γ by ICCS. The cells were initially gated on CD4. Note the increase of IFN- γ producers in the mutant upon advanced age.

Supplemental Figure 2: *GATA-3 expression in uninfected cells and cells infected with empty vector and vector containing GATA-3.* Splenic CD4⁺ cells were left uninfected (**a**) or infected with virus as in figure 3c and skewed an additional 3 days (**b**). Cells were stained with antibody against GATA-3 (black line) or isotype control (shaded gray peak) and analyzed by FACS.

B6 Th2

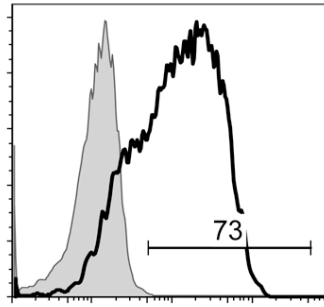
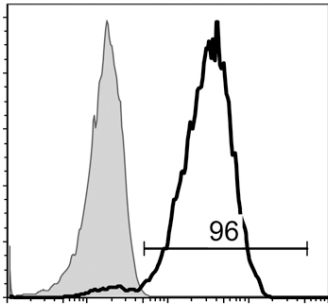
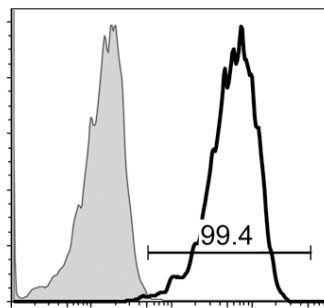
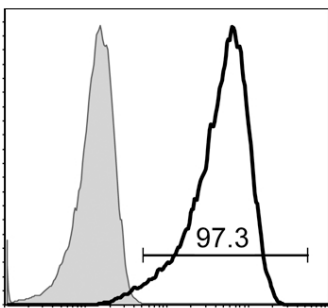
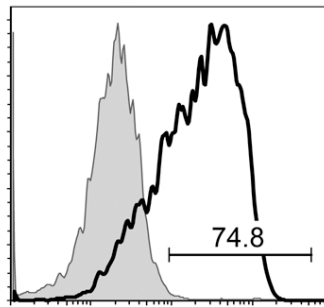
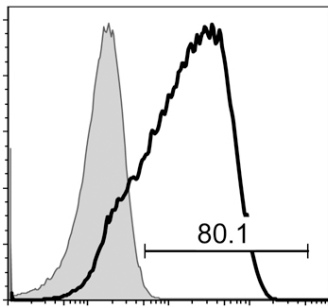
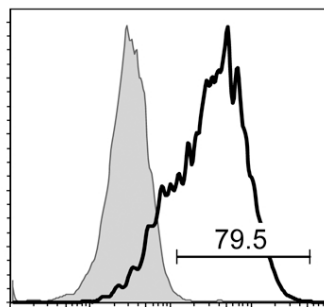
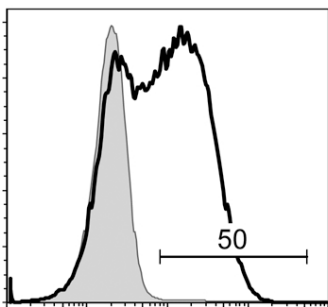
***Ick*^{-/-} Th2**



6 weeks old

1 year old

IL-4

A**B6 Th2*****Ick*^{-/-} Th2****MFI- 362****MFI- 193****GATA-3****B****GFP⁻****GFP⁺****MFI- 572****MFI- 686****B6 Th2 Vector****GFP⁻****GFP⁺****MFI- 256****MFI- 337*****Ick*^{-/-} Th2 Vector****GFP⁻****GFP⁺****MFI- 147****MFI- 466*****Ick*^{-/-} Th2 GATA3****GATA-3**