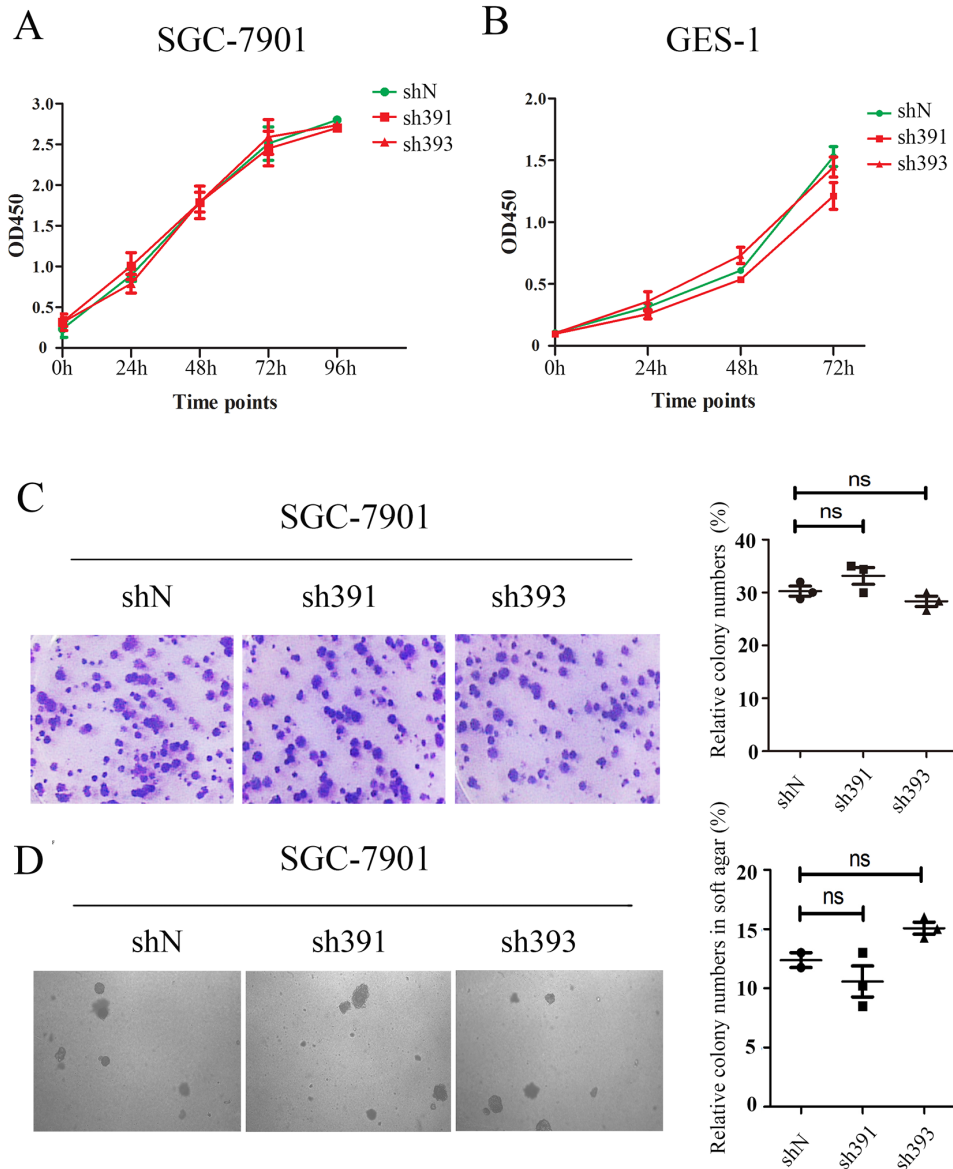
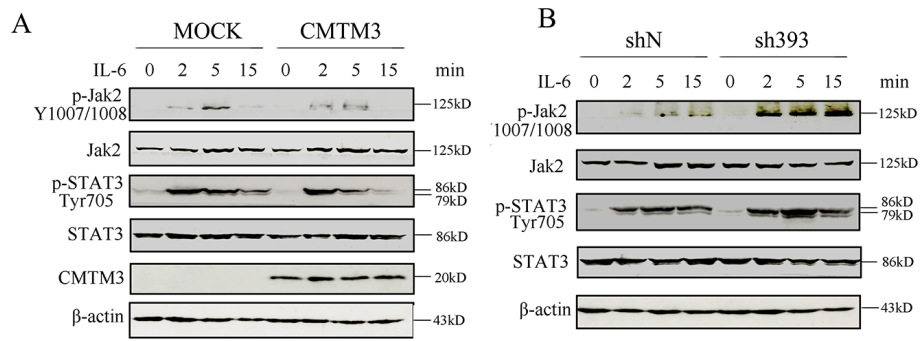


SUPPLEMENTARY FIGURES



Supplementary Figure S1: Stable knockdown of CMTM3 does not affect cell proliferation. **A, B.** CCK8 assay of shN, sh391 and sh393 of SGC-7901 and GES-1 cells. **C.** plate colony formation assay of shN and CMTM3-knockdown-SGC-7901 cells; the colonies (≥ 50) were quantified and representative images of cell colonies were obtained. **D.** soft-agar colony formation assay of shN and CMTM3-knockdown-SGC-7901 cells; the colonies (≥ 50) were quantified and representative images were obtained (100 \times magnification). Data are presented as the mean \pm s.d (ns, not significant).



Supplementary Figure S2: CMTM3 has suppressive effects on IL-6 induced Jak2-STAT3 phosphorylation. A. p-Jak2 and p-STAT3 were detected with stimulation of IL-6 (50ng/mL) for different time points in CMTM3 restored SGC-7901 cells. B. p-Jak2 and p-STAT3 were detected with stimulation of IL-6 (50ng/mL) for different time points in CMTM3 knockdown SGC-7901 cells.