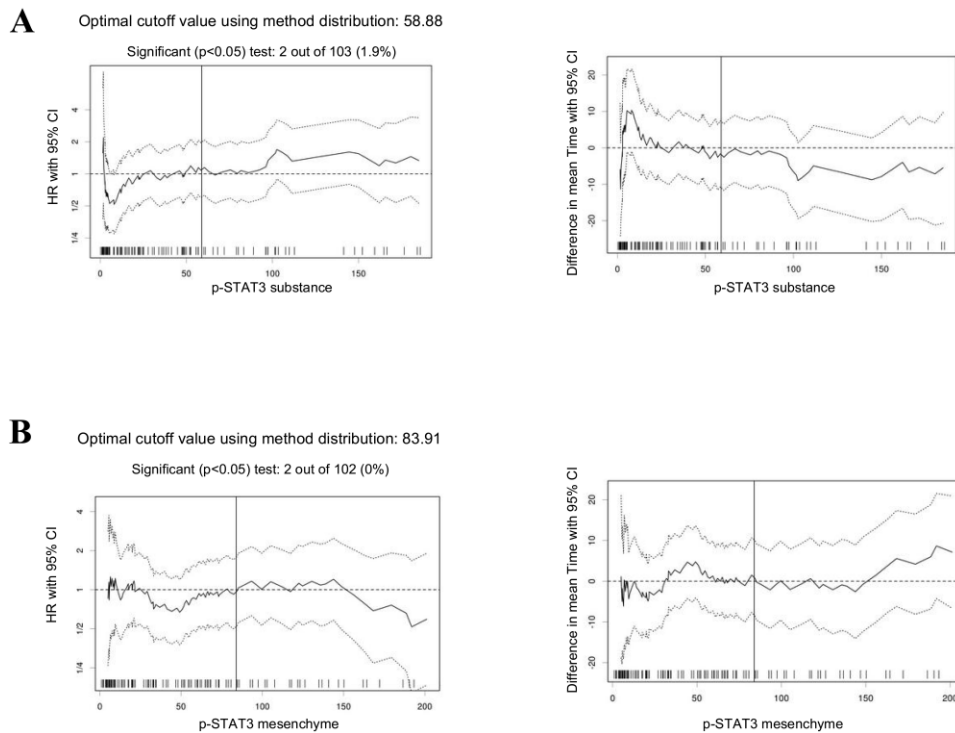


STAT3 Induces Immunosuppression by Upregulating PD-1/PD-L1 in HNSCC

L.L. Bu, G.T. Yu, L. Wu, L. Mao, W.W. Deng, J.F. Liu, A.B. Kulkarni, W.F. Zhang, L. Zhang, and Z.J. Sun

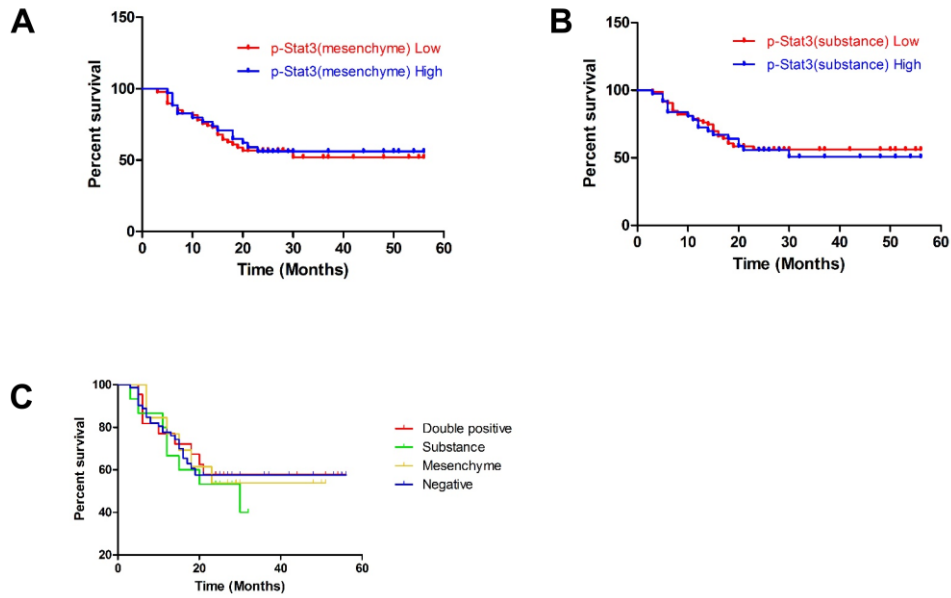
Appendix

Appendix Figure 1. The Cutoff Finder was used to determine cutoff points in protein expression data



Appendix Figure 1. The Cutoff Finder was used to determine cutoff points in protein expression data. **(A)** Cutoff point optimization for p-STAT3 (epithelia) expression in HNSCC patients. **(B)** Cutoff point optimization for p-STAT3 (mesenchyme) expression in HNSCC patients.

Appendix Figure 2. The survival analysis of p-STAT3 (substance or mesenchyme) in HNSCC patients.



Appendix Figure 2. The survival analysis of p-STAT3 (epithelia or mesenchyme) in HNSCC patients.