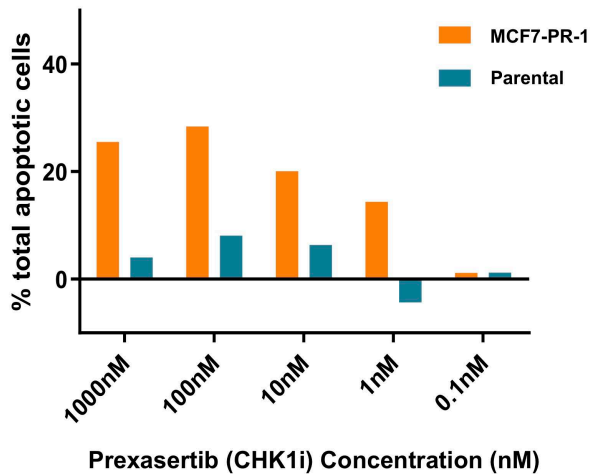
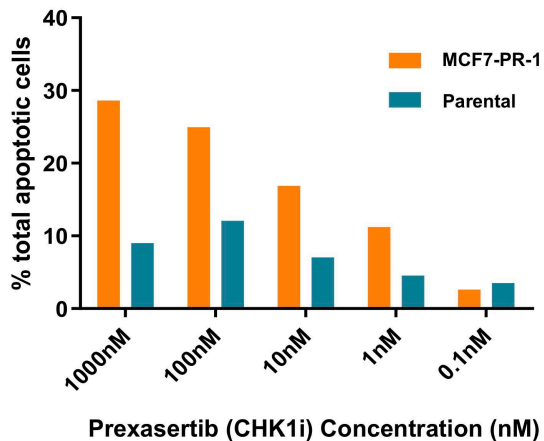


**a** Apoptotic Cell Fraction – 48H CHK1i Treatment



	MCF7-PR-1	Parental
1000nM	25.54	4.02
100nM	28.38	8.11
10nM	20.09	6.38
1nM	14.37	-4.31
0.1nM	1.17	1.2

**b** Apoptotic Cell Fraction – 72H CHK1i Treatment



	MCF7-PR-1	Parental
1000nM	28.6	9.01
100nM	24.96	12.07
10nM	16.88	7.04
1nM	11.23	4.55
0.1nM	2.62	3.53

**Supplemental Figure 10. CCNE2-expressing MCF7-PR-1 cells demonstrate increased apoptosis with CHK1 inhibitor treatment.**

Parental MCF7 and derivative MCF7-PR-1 cells (expressing high CCNE2) were treated with increasing doses of prexasertib (CHK1i). The apoptotic cell fraction (assessed via Annexin V-FITC Apoptosis Detection Assay) was measured relative to a DMSO control and plotted as a function of CHK1i dose. Results are provided for both 48 hours (a) and 72 hours (b) of drug treatment (raw data is provided at RIGHT).