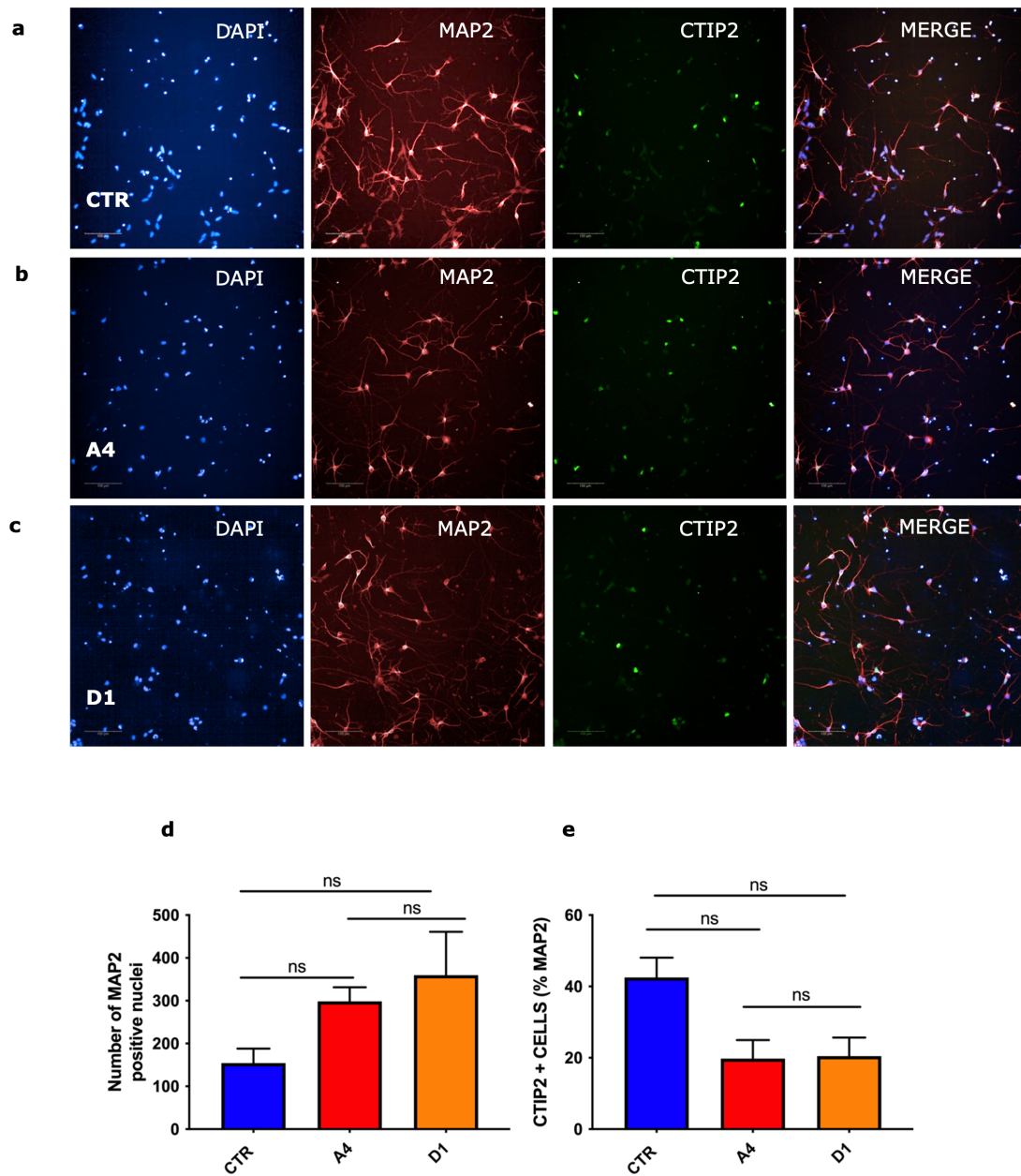


## Supplementary figure 4



**Supplementary figure 4.** Immunostaining of (a) CTR, (b) A4 and (c) D1 iPSC-neurons to confirm neuronal identity (MAP2) and cortical lineage (CTIP2). (d) The number of MAP2 positive neurons was similar between genotypes ( $p=0.1474$ ; CTR vs. A4:  $p=0.3227$ , CTR vs. D1:  $p=0.1396$ , A4 vs. D1:  $p=0.7873$ ). (e) The percentage of CTIP2 positive MAP2 neurons was significantly influenced by neuron genotype ( $p=0.0387^*$ ), however, no significant differences were revealed following multiple comparisons testing (CTR vs. A4:  $0.0699$ , CTR vs. D1:  $p=0.0656$  and A4 vs. D1:  $p=0.9957$ ). The percentage of CTIP2

positive MAP2 neurons for all cultures were: CTR:  $42.5 \pm 5.6\%$ , A4:  $19.8 \pm 5.2\%$ , and D1:  $20.5 \pm 5.2\%$ ).

Data are shown as mean  $\pm$  SEM. Mean values were calculated from neuronal samples collected from three independent differentiations of neurons, of which each contained triplicate samples (n=3). Significance was tested using One-Way ANOVA with Tukey's Multiple comparisons analysis  $P < 0.05^*$ .