

Supplementary figure 5

Figure 1a upper blot iCLU original

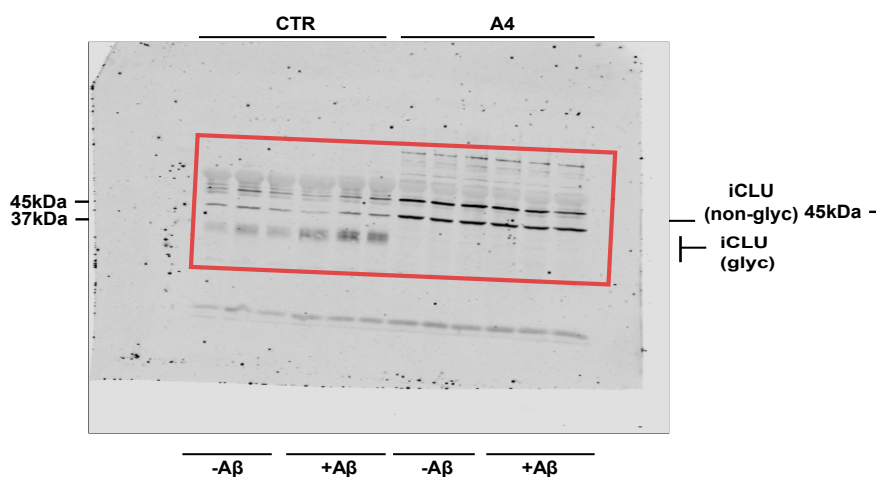


Figure 1a beta actin blot original

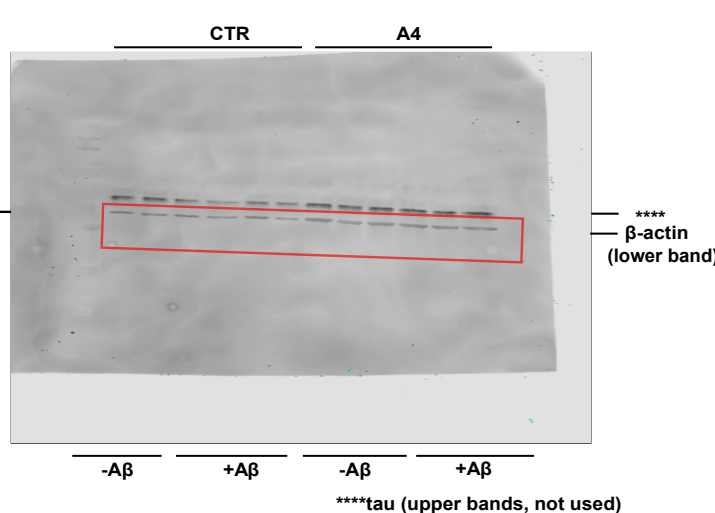


Figure 1b upper blot iCLU original

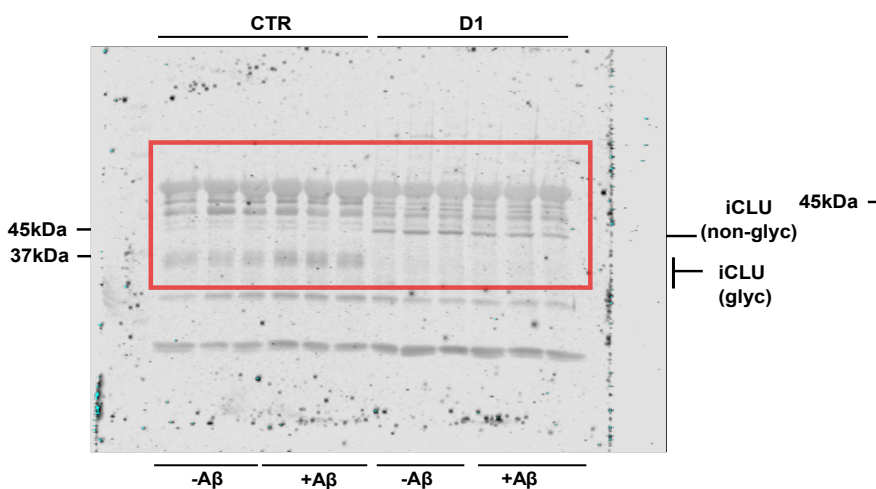


Figure 1b beta actin blot original

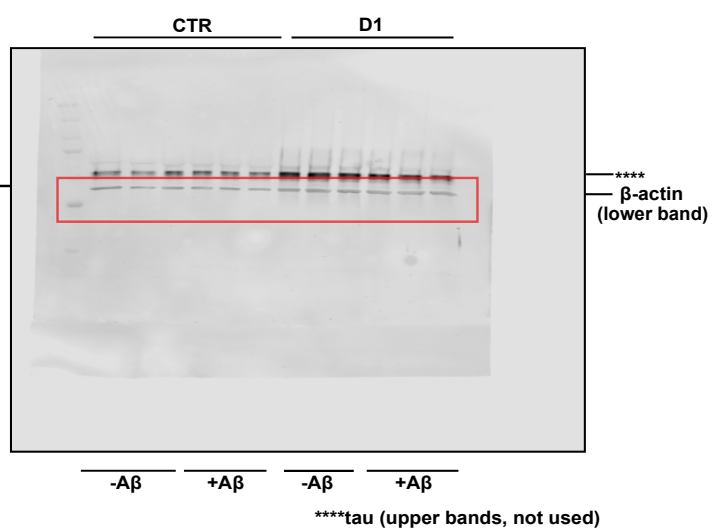


Figure 1a lower blot sCLU original blot

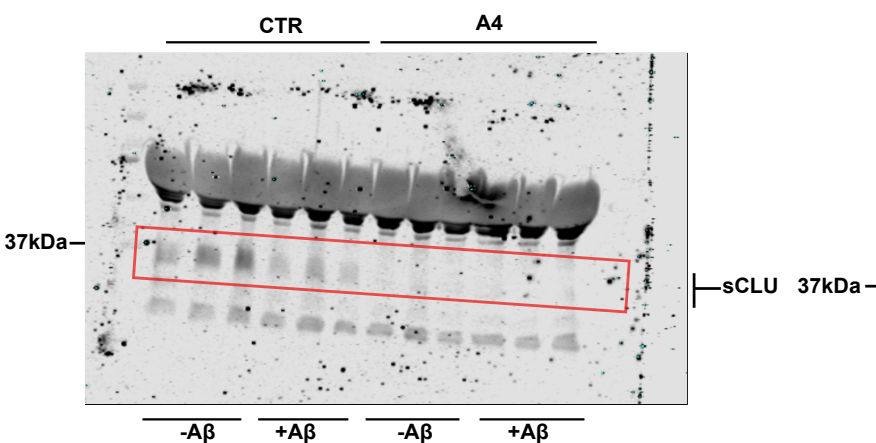
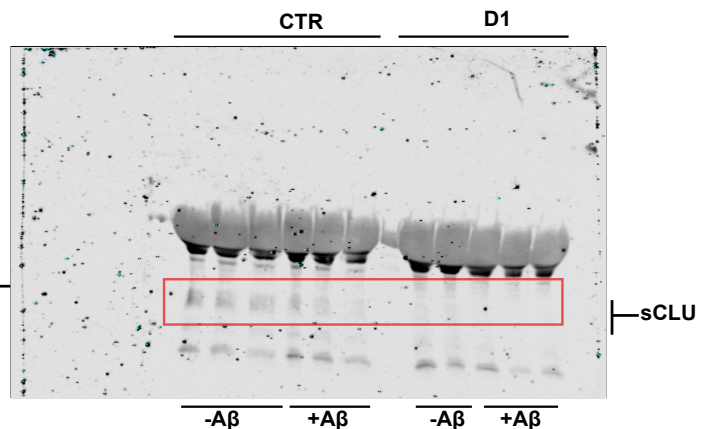


Figure 1b lower blot sCLU original blot



Supplementary figure 5. Original and uncropped western blots for immunostaining of CLU and β -actin.

All blots were stained with goat anti-clusterin primary to stain both intracellular and secreted clusterin proteins. For loading control staining blots were stained with rabbit anti- β -actin primary.

Blots displaying β -actin also display additional bands staining for tau (rabbit primary) but these were not used in subsequent analysis