



---

## ELECTRONIC SUPPLEMENTARY MATERIAL

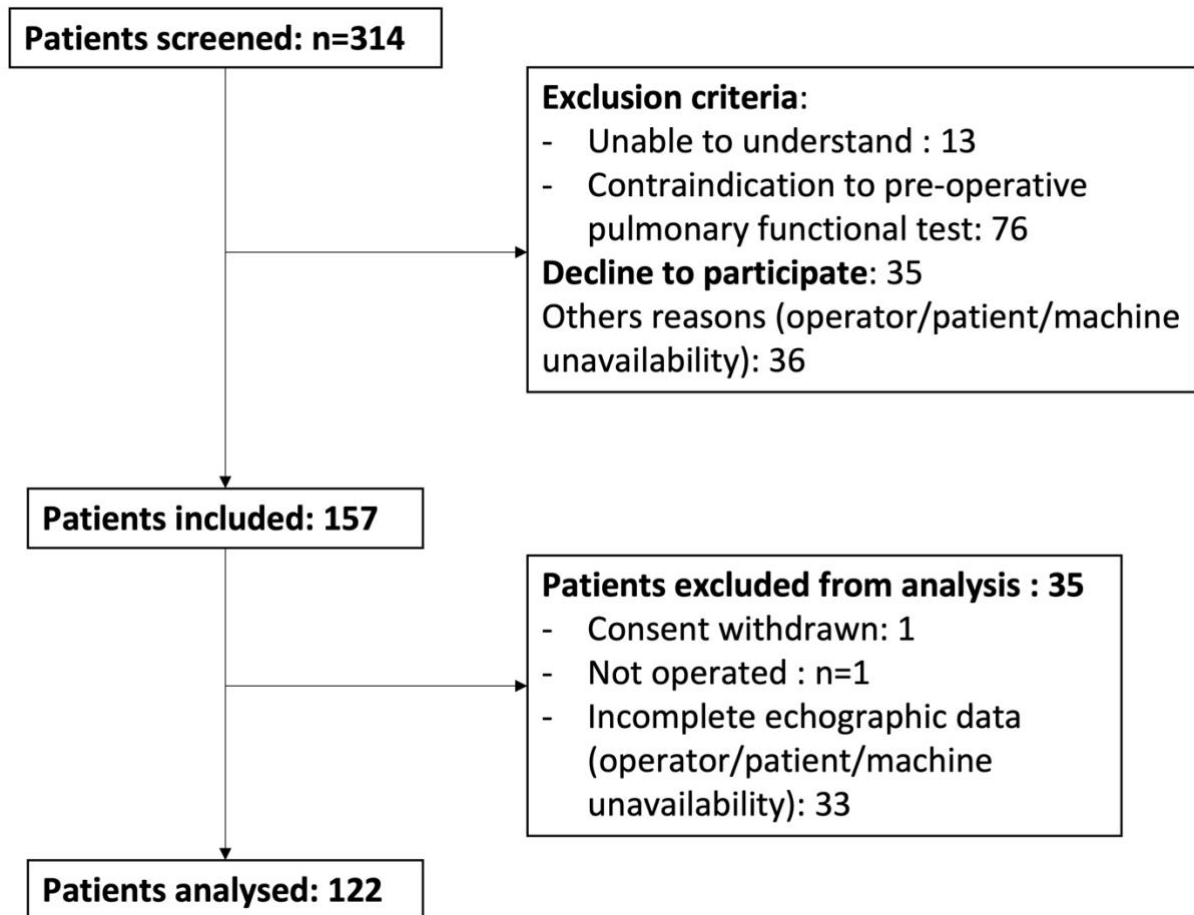
### **Laghlam D *et al.*: Persistent diaphragm dysfunction after cardiac surgery is associated with adverse respiratory outcomes: a prospective observational ultrasound study**

***Disclaimer:** Electronic Supplementary Material (ESM) is supplied by the authors for the benefit of readers. This feature is intended to provide additional information, context, and/or dimension to complement articles. Readers should be aware that unlike the main print manuscript, ESM may not undergo extensive peer review and typically is posted as supplied by the authors without editing, proofreading, accuracy checking, copyediting, or typesetting; it is published online only.*

#### TABLE OF CONTENTS

<b>eFigure</b>	Study flow chart
<b>eTable</b>	Results of pulmonary function tests

**eFigure** Study flow chart



**eTable** Results of pulmonary function tests

	<b>Whole cohort</b> ( <i>N</i> = 122)	<b>No DD</b> ( <i>N</i> = 112)	<b>Persistent DD</b> ( <i>N</i> = 10)	<b><i>P</i> value</b>
FVC (L), mean (SD)	3.36 (1.05)	3.36 (1.04)	3.35 (1.21)	0.97
FEV <sub>1</sub> (L), mean (SD)	2.66 (0.86)	2.66 (0.86)	2.65 (0.91)	0.96
FEV <sub>1</sub> /FVC (%), median [IQR]	79.6 [74.8–85.3]	80.1 [75.1–85.3]	78.5 [74.6–88.2]	0.90
TLC (L), mean (SD)	6.2 (1.6)	6.1 (1.6)	7.1 (1.9)	0.12
RV (L), mean (SD)	2.6 (0.9)	2.6 (0.9)	3.2 (0.9)	0.08
FVC <sub>post</sub> /FVC <sub>pre</sub> , median [IQR] ( <i>n</i> = 4)	-	-	0.81 [0.67–0.90]	-
FEV <sub>1post</sub> /FEV <sub>1pre</sub> , median [IQR] ( <i>n</i> = 4)	-	-	0.77 [0.61–0.84]	-
TLC <sub>post</sub> /TLC <sub>pre</sub> , median [IQR] ( <i>n</i> = 3)	-	-	0.85 [0.82–1.10]	-

DD = diaphragm dysfunction; FEV<sub>1</sub> = forced expiratory volume in the first second; IQR = interquartile range; FVC = forced vital capacity; RV = residual volume; SD = standard deviation; TLC = total lung capacity