

Sudoku Mild No 15,342

7			1		4			2
			8		3			
2	3						6	4
	2						3	
			3	4	6			
9								8
6	7		5		2		8	3
	9			8			2	
8	1						4	9

Difficult No 15,343

Super fiendish No 15,344

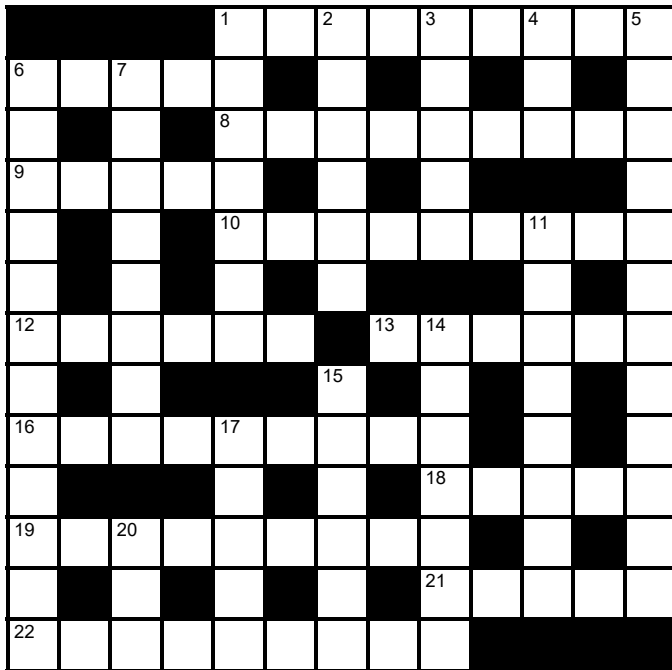
			4	8		7		
		5				9		
							3	8
	4	8			2			
7	6		9					2
		9		1				7
	1	4	7		9		6	
8		3		6	1			
	5			3				

		2	6		8		1	4
	4						2	8
	6		4					
					5			3
	8			2		7		9
					1	5	4	
	2	5				1		
	1	3		5	7			

© PUZZLER MEDIA

Cluelines Stuck on Sudoku, Killer or KenKen? Call 0901 293 6263 before midnight to receive four clues for any of today's puzzles. Calls cost £1 plus your telephone company's network access charge. SP: Spoke, 0333 202 3390 (Mon-Fri 9am-5.30pm).

The Times Quick Cryptic No 2819 by Teazel



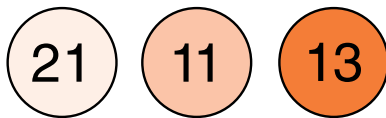
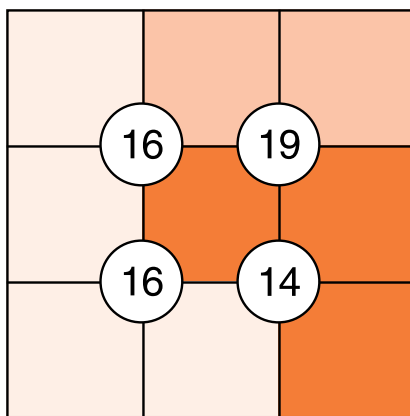
Across

- 1 The French Revolution? (4,5)
- 6 Find a space to leave a coat (5)
- 8 House and grounds where one may find game (5,4)
- 9 Row of mountains resounded with echo (5)
- 10 Porthole shutter, not at all heavy? (9)
- 12 Compassionate, being English (6)
- 13 At critical moment, energy in dancer's toes (6)
- 16 Card Peter played that may be put down for star (3,6)
- 18 Freight to travel on passenger transport (5)
- 19 Mexican dish and a Chile stew (9)
- 21 Mum always very thin (5)
- 22 To an extent, entreat men towards medical help (9)

Down

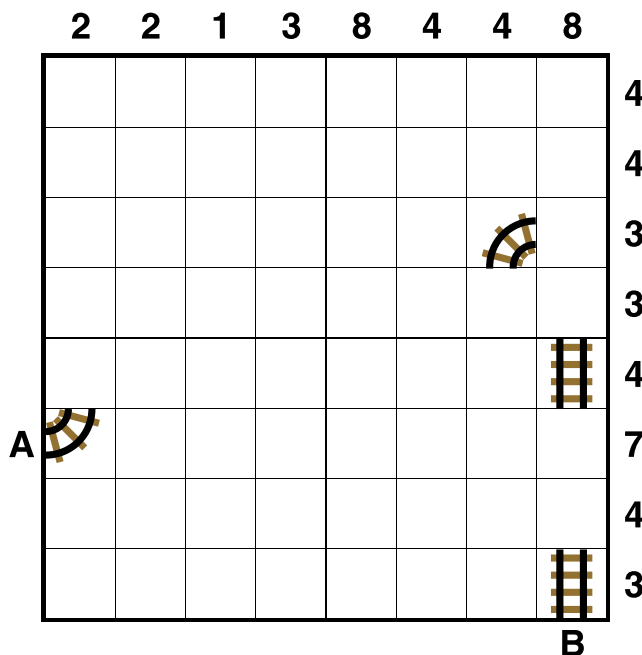
- 1 Meekly surrendered primitive shelter before row (5,2)
- 2 Shoulder burden of file transfer? (6)
- 3 Slow speech from doctor with sharp implement (5)
- 4 Squad of players not finishing drink (3)
- 5 Start to speak, leaving opponent nowhere to stand? (4,3,5)
- 6 Serviceman in foreign capital is nosy, amid high tension (6,6)
- 7 Set free, did a bit of running and finally departed (8)
- 11 Police officer is man convulsed with greed (8)
- 14 Blooming group of actors is rejected (7)
- 15 A poet, I fancy narcotic (6)
- 17 A table for celebrities (1-4)
- 20 Signal to line up for hearing (3)

Suko No 4259



Place the numbers 1 to 9 in the spaces so that the number in each circle is equal to the sum of the four surrounding spaces, and each colour total is correct

Train Tracks No 2385



Lay tracks to enable the train to travel from village A to village B. The numbers indicate how many sections of track go in each row and column. There are only straight sections and curved sections. The track cannot cross itself.

Word watch
David Parfitt

Owelry

- a A nesting area used by nocturnal birds
- b A feeling of resignation
- c Equality in financial transactions

Lucifugous

- a Spending immoderately
- b For the relief of a fever
- c Shunning or avoiding light

Jerkwater

- a A Caribbean spiced drink
- b A sad or poignant film or book
- c (Of a place) small and remote

Tetonor Easy No 513

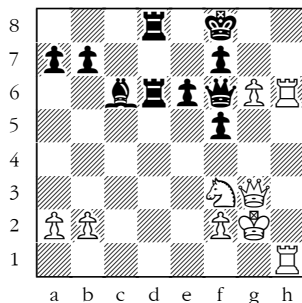
175	16	64	60
37	330	20	72
100	19	384	32
40	88	17	207

4	5	8	8	9	10	11	15	16	22	35
---	---	---	---	---	----	----	----	----	----	----

When complete, the strip below the grid can be split into eight pairs of numbers. Adding the numbers in a pair gives one of the 16 numbers in the grid. Multiplying them gives a different number in the grid. For example, a 4 and 6 in the strip could be paired to make 10 (4+6) and 24 (4x6) in the grid. Enter each sum below the corresponding number in the grid. The blanks in the strip must be deduced, bearing in mind the numbers are listed in ascending order.

The next Tetonor puzzle will appear on Thursday

Winning Move



White to play.
This position is from Galperin-Sieciechowicz, Darlowo 2024.
I recently stumbled across the wonderful word “wonderclout”, which seems to have fallen out of use. It describes something showy but ultimately useless. Here Black’s rooks are a wonderclout, beautifully lined up but achieving nothing and going nowhere. White’s, on the other hand, have the black king in their sights. How did he finish off?

Codeword No 5358

	20	14	15	12	7		12	5	9	20	20	
5		15		25		14		25		23		25
9	1	26		22	24	9	1	26		25	11	21
11		26				21				2		11
22	24	15	12		20	25	18		9	3	10	9
2			11	15	26		24	1	19			4
17	2	20	1		15		1		2	3	9	1
15			8	15	15		2	I	T	20	S	11
11	9	24	6		18	2	21		26	15	1	3
15		9				21				21		2
25	20	9		13	1	26	1	24		20	2	21
20		11		24		15		9		9		10
	20	6	11	25	18		16	9	26	26	6	

A B C D E F G H I J K L M N O P Q R S T U V W X Y Z

1	2	3	4	5	6	7	8	9	10	11	12	13
	I											
14	15	16	17	18	19	20	21	22	23	24	25	26
						S						T

Every letter in this crossword-style grid is represented by a number from 1 to 26. Each letter of the alphabet appears in the grid at least once. Use the letters already provided to work out the identity of further letters. Enter letters in the main grid and the smaller reference grid until all 26 letters of the alphabet have been accounted for. Proper nouns are excluded. *Yesterday’s solution, right*

Cluelines Stuck on Codeword? To receive 4 random clues call 0901 293 6262 or text TIMECODE to 64343. Calls cost £1 plus your telephone company’s network access charge. Texts cost £1 plus your standard network charge. For the full solution call 0905 757 0142. Calls cost £1 per minute plus your telephone company’s network access charge. SP: Spoke, 0333 202 3390 (Mon-Fri, 9am-5.30pm).

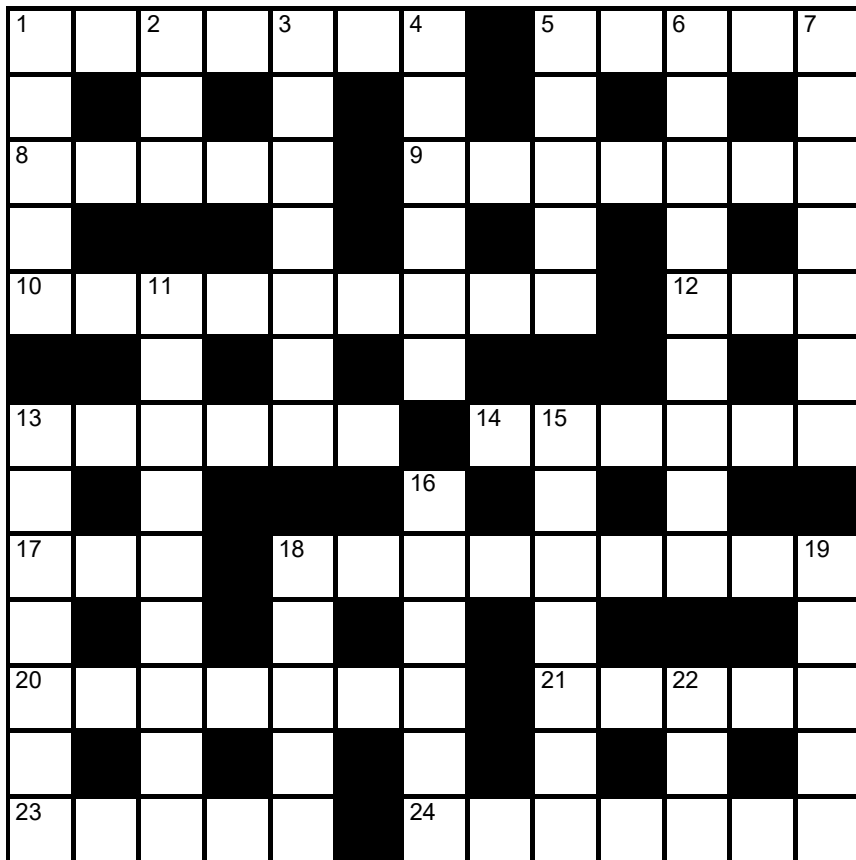
Lexica Easy No 7745

Hard No 7746

•	T	R	•	K	E	R	•	•	•	I	P	P	•	A	O	•	•	•
•	I							•	•	W							•	T
•	B							•	•	N	E						•	U
•	E							•	•	D	A						•	E
•	I							•	•	E	A						•	S
•	G							•	•	H	N						•	Y
•	•							•	•	O	N						•	K
•	•	•	•	•	•	•	•	•	•	•	•	•	•	•	•	•	•	•
•	O	U	•	P	L	T	•	•	•	B	U	S	E	R	•	•	•	•

Slide the letters either horizontally or vertically back into the grid to produce a completed crossword. Letters are allowed to slide over other letters

times2 Crossword No 9674



Across

- 1 Solace (7)
- 5 Culinary herb (5)
- 8 Full-length (5)
- 9 Chicken breed (7)
- 10 Alcohol-fuelled yob (5,4)
- 12 Invest with a title (3)
- 13 Inexperienced (6)
- 14 Left uncultivated (6)

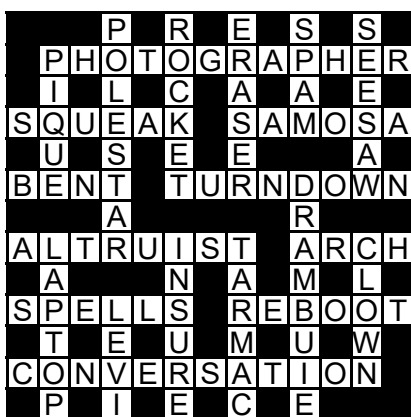
17 Objective (3)

- 18 Having acute vision (5-4)
- 20 Very eccentric person (7)
- 21 Topical comedy show (5)
- 23 Baton-passing race (5)
- 24 Marvels (7)

Down

- 1 Barbaric, merciless (5)
- 2 Raincoat (3)
- 3 Canadian province (7)
- 4 Fat used to make soap (6)
- 5 Chauvinist (5)
- 6 Combat with blades (9)
- 7 Medieval weapon (7)
- 11 Olympic prize (4,5)
- 13 Noisy chorus of demands (7)
- 15 Painkiller (7)
- 16 Having an unhealthy complexion (6)
- 18 Frightening (5)
- 19 Item of womenswear (5)
- 22 Compete (with) (3)

Solution to Crossword 9673



Need help with today's puzzle? Call 0905 757 0143 to check the answers. Calls cost £1 per minute plus your telephone company's network access charge. SP: Spoke, 0333 202 3390 (Mon-Fri 9am-5.30pm).

KenKen Medium No 6350

18×			1-	20×	
3÷	8+	15+			1-
			3	18×	
4					
15+		3÷		5+	
		2÷		1-	

All the digits 1 to 6 must appear in every row and column. In each thick-line "block", the target number in the top left-hand corner is calculated from the digits in all the cells in the block, using the operation indicated by the symbol.

© 2010 KENKEN PUZZLE & TIM NEXTDY, DIST. BY UPS, INC. WWW.KENKEN.COM

Futoshiki No 4898

<input type="text"/>	<input type="text"/>	<input type="text"/>	<input type="text"/>	<input type="text"/>
∨	∧			∧
4	<input type="text"/>	<input type="text"/>	<input type="text"/>	<input type="text"/>
<input type="text"/>	<input type="text"/>	>	>	<input type="text"/>
<input type="text"/>	5	<input type="text"/>	>	<input type="text"/>
∨				
<input type="text"/>	<input type="text"/>	<input type="text"/>	<input type="text"/>	<

Fill the blank squares so that every row and column contains each of the numbers 1 to 5 once only. The symbols between the squares indicate whether a number is larger (>) or smaller (<) than the number next to it.

Kakuro No 3857

	6	38		42	4	15		16	5
14			19					9	
5			11				13		
	9				14				
	24			28				41	5
	27							13	
13	6		26				8		
19			8			21			
	9	13	10		16	16			5
10				10				12	
17				19				5	

Fill the grid using the numbers 1 to 9 only. The numbers in each horizontal or vertical run of white squares add up to the total in the triangle to its left or above it. The same number may occur more than once in a row or column, but not within the same run of white squares.

© PUZZLER MEDIA

Quintagram®

Solve all five cryptic clues using each letter underneath once only

1 One leaving sinking ship? Sailor's returning! (3)

— — —

2 Not quite right to frame DA as 1 (5)

— — — — —

3 Is 1 so like serpent trapping Eve ultimately? (6)

— — — — —

4 Trendy ex is 1 (8)

— — — — —

5 Do greenkeepers aspire to produce this 1? (10)

—	—	—	—	—	—	—	—
A	A	A	A	D	E	E	E
F	G	I	J	K	M	N	N
O	P	R	R	R	R	R	S
S	S	S	S	T	U	U	Y

Brain Trainer

EASY	68	÷ 2	x 3	- 9	$\frac{2}{3}$ OF IT	+ 8	80% OF IT	+ 9	÷ 13	SQUARE IT	ANSWER	
MEDIUM	176	x 4	$+ \frac{1}{2}$ OF IT	+ 26	50% OF IT	+ 83	$\frac{5}{6}$ OF IT	+ 64	75% OF IT	+ 57	ANSWER	
HARDER	197	x 5	+ 994	x 3	+ 88	$\frac{4}{5}$ OF IT	- 838	$+ \frac{1}{2}$ OF IT	+ 997	90% OF IT	ANSWER	

Polygon



From these letters, make words of three or more letters, always including the central letter. Answers must be in the *Concise Oxford Dictionary*, excluding capitalised words, plurals, conjugated verbs (past tense etc), adverbs ending in LY, comparatives and superlatives. **How you rate** 13 words, average; 18, good; 24, very good; 30, excellent

Yesterday's answers

aga, agal, ail, ait, alga, await, awl, gait, gaita, gal, gala, gat, glia, ital, lag, lat, law, taal, tag, taiga, tail, tala, taw, tawa, wag, wagtail, wail, wait, wat, wilga

Cell Blocks No 5241

2			3		
2				6	
			2		4
	2				
4	2			4	
		6	6		2
4					

Divide the grid into square or rectangular blocks, each containing one digit only. Every block must contain the number of cells indicated by the digit inside it.

Set Square No 3860

	x		x	= 32
x		x		= 1
				= 17
9			2	= 31
				= 1
				= 2

Enter each of the numbers from 1 to 9 in the grid, so that the six sums work. We've placed two numbers to get you started. Each sum should be calculated left to right or top to bottom.

Please note, BODMAS does not apply

Killer Moderate No 9754

19	11		23	10		21	6	
		7					6	
13			3		8		13	
		21	11	8		12		10
14				19				
21			19		4	11	16	14
	8							
		8		16	14	8		19
12								

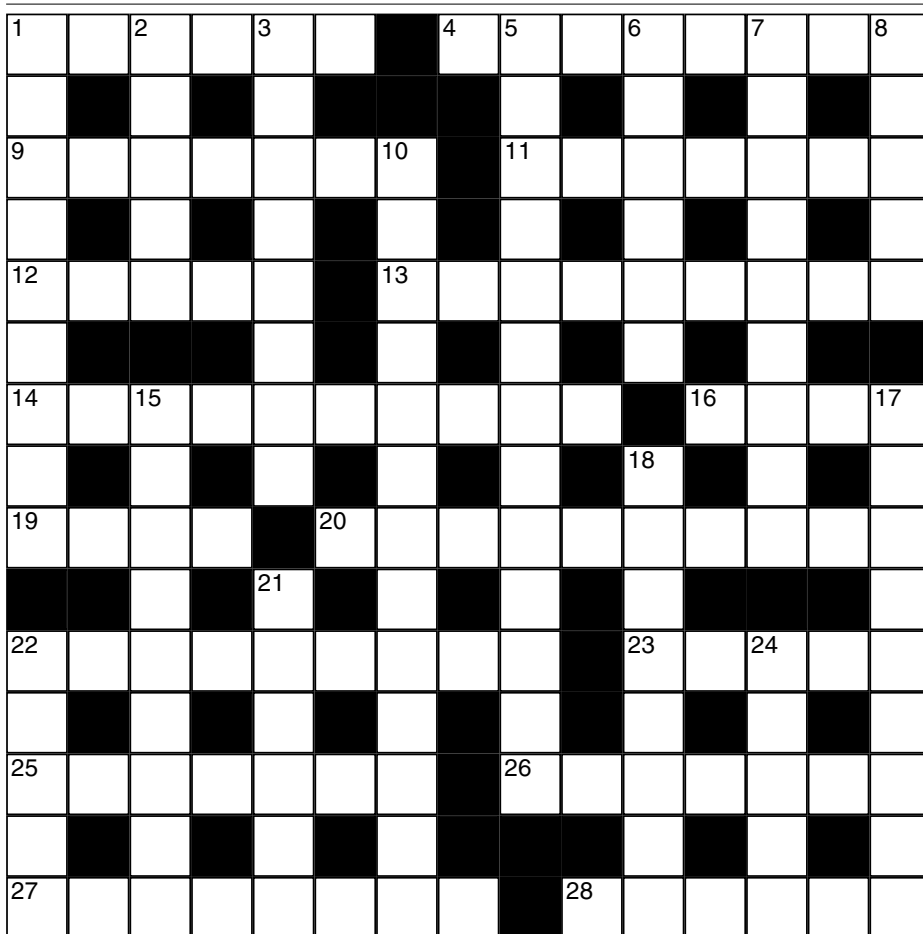
Killer Tough No 9755

6		19			23	15	
22		10		15			
	13		6		15		10
9							17
12		23		8	16	4	7
8	10	23				10	
				10			30
22		9		8			
					18		

As with standard Sudoku, fill the grid so that every column, every row and every 3x3 box contains the digits 1 to 9. Each set of cells joined by dotted lines must add up to the target number in its top-left corner. Within each set of cells joined by dotted lines, a digit cannot be repeated.

Cluelines Stuck on Sudoku, Killer or KenKen? Call 0901 293 6263 before midnight to receive four clues for any of today's puzzles. Calls cost £1 plus your telephone company's network access charge. SP: Spoke, 0333 202 3390 (Mon-Fri 9am-5.30pm).

Times Crossword 29,060



ACROSS

- 1 Great ruler Henry pursues around border (6)
- 4 Wrong way to fill pastry, following one's own path (3-5)
- 9 Exploit really quiet, timid individual (7)
- 11 Range around East Timor's capital in train again (7)
- 12 Temp left firm over sign of indecision (5)
- 13 Case of luxurious rings made of gold for distinguished people (9)
- 14 Caught short, perhaps (10)
- 16 Retiring female loves husband, maybe a bit of an ass (4)
- 19 Sandwich, say? Wife tucked into large quantity (4)
- 20 Supposed snobs mixed with elite (10)
- 22 Stand, carrying a single wide hamper (9)
- 23 Cast is entertaining, pocketing 50 grand (5)
- 25 Spurs ground is lit, letting in header from Man United (7)
- 26 Cheesy dish cooked just a little moment (7)
- 27 Advance across shifting sand in coastal site (5,3)
- 28 Fan of grass cuckoo nest that's covered round river (6)

DOWN

- 1 Officer suggested dismissing one involved in crime (9)
- 2 Pale colour of phone casing this person brought round (5)
- 3 Frank's back from trip, one spent in former East Germany (8)
- 5 Riches given to bank worker, one trading in futures (7,6)
- 6 Invest Asian currency, turning up a bit of capital (6)
- 7 Guided munition to fail after vehicle's overturned (5,4)
- 8 English Master's ditched by doubtful fellow showing spirit (5)
- 10 Force workplace staff to accept extremely idiotic post (6,7)
- 15 Curiously wanting one less good qualification for mechanics (9)
- 17 Goods transporter about to board plane (9)
- 18 Court disaster, like pro donning sportswear (3,3,2)
- 21 Entertainment shows gun users regularly ignored (6)
- 22 Producer of fibre products is altering bags (5)
- 24 Time to leave religious headgear for Pope (5)

Yesterday's solution 29,059



Check today's answers by ringing 0905 757 0141 by midnight. Calls cost £1 per minute plus your telephone company's network access charge. SP: Spoke 0333 202 3390.

Solutions

Quick Cryptic 2818

M	A	T	T	B	L	U	S	T	E	R	Y
C	E	E	N	Y	E						
T	U	R	M	E	R	I	C	P	O	S	T
T	P	R	L	O	O						
R	E	M	E	D	Y	E	N	G	U	L	F
O	R	A	R	A	R	V					
D	I	S	A	D	V	A	N	T	A	G	E
M	M	I	P	Y							
A	P	P	E	A	L	C	O	H	E	R	E
L	N	L	H	I	E						
B	O	U	T	A	N	A	R	C	H	I	C
R	A	G	O	A	G						
W	E	L	L	N	E	S	L	A	N	D	

Codeword 5357

F	P	F	C	G	J						
A	R	B	O	R	E	A	L	A	W	A	Y
E	A	T	R	U	Z	U					
H	E	A	T	E	R	E	Q	U	I	N	E
E	O										
S	T	E	R	N	U	M	S	P	O	I	L
U	S	P	C								
C	R	I	C	F	L	U	T	T	E	R	
R	O										
M	E	R	C	E	R	A	B	O	A	R	D
T	C	O	N	U	I						
B	E	V	O	B	A	C	K	P	A	C	K
D	X	E	Y	E	H						

Kakuro 3856

9	8	1	4	1	8	3
8	7	6	2	1	9	5
6	1	6	3	2	7	
		3	9	8	1	9
2	5	1	8	4	6	5
1	3		5	3	6	4
6	8	1		9	8	2
9	3			8	1	8
8	1		9	6	2	4
9	6		7	2	2	5

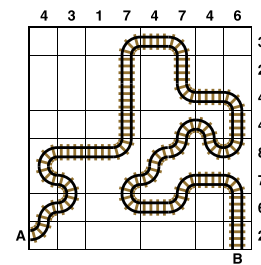
Sudoku 15,339

4	9	8	3	7	6	5	2	1
1	2	7	4	8	5	6	3	9
3	5	6	1	9	2	4	8	7
8	6	4	5	3	7	1	9	2
2	3	5	9	4	1	7	6	8
7	1	9	6	2	8	3	5	4
9	4	2	7	5	3	8	1	6
5	8	1	2	6	4	9	7	3
6	7	3	8	1	9	2	4	5

GK Crossword 257

A	S	D	I	C	M	A	T	T	L	U	C	A	S
U	Y	O	E	O	O	O	T						
R	O	S	E	W	A	T	E	R	C	A	N	O	E
O	O	B	A	R	U	T	P						
R	E	N	N	E	T	L	I	Z	S	M	I	T	H
A	L	B	C	T	N	E							
A	N	G	E	L	C	A	K	E	S	T	E	I	N
U	R	C	L	N	M								
S	U	E	D	E	K	I	L	O	M	E	T	R	E
T	A	P	G	I	I	R							
R	A	T	T	I	G	A	N	T	R	O	P	I	C
A	O	T	M	B	A	A	H						
L	O	U	T	M	E	L	A	N	E	S	I	A	
I	S	E	O	U	D	T	N						
S	W	E	E	T	E	N	E	R	A	V	A	S	T

Train Tracks 2384



Sudoku 15,340

5	6	3	4	1	9	8	7	2
7	2	4	3	6	8	9	5	1
1	8	9	2	5	7	6	4	3
8	3	1	6	4	2	5	9	7
4	5	7	9	8	1	2	3	6
2	9	6	7	3	5	4	1	8
9	7	8	1	2	4	3	6	5
3	1	2	5	9	6	7	8	4
6	4	5	8	7	3	1	2	9

Cell Blocks 5240

	3				
		3			12
4	5				
					2
6				8	
	2		2		2

Set Square 3859

6	x	1	-	3
+		-		x
8	÷	2	x	4
+		+		x
9	-	7	x	5

Lexica 7743

J	U	I	C	E
O			H	
B			O	W
	M		S	U
	O	R	E	D
	O			E

Sudoku 15,341

5	3	9	2	6	8	1	4	7
7	6	8	1	4	5	9	2	3
1	4	2	3	9	7	6	8	5
3	1	5	8	2	4	7	6	9
9	2	7	6	1	3	4	5	8
4	8	6	5	7	9	3	1	2
8	9	1	7	5	6	2	3	4
6	7	3	4	8	2	5	9	1
2	5	4	9	3	1	8	7	6

Futoshiki 4897

2	1	5	4	3		
				2		
1	<	4	3	<	5	2
3	2	4	1	5		
4	<	5	2	<	3	1
5	3	1	2	4		

KenKen 6349

1	2	5	3	4	6
4	6	2	5	1	3
3	1	6	2	5	4
6	4	3	1	2	5
2	5	4	6	3	1
5	3	1	4	6	2

Lexica 7744

	C		U	
F	R	O	N	T
	A		S	
A	D	J	U	S
	L		R	
	E	V	E	R
			Y	

Today's solutions

Killer 9752

2	1	4	9	5	8	7	3	6
8	3	5	6	4	7	9	2	1
9	7	6	2	1	3	8	5	4
6	8	9	7	2	5	1	4	3
7	2	1	4	3	6	5	9	8
5	4	3	8	9	1	6	7	2
1	6	2	3	7	9	4	8	5
4	5	7	1	8	2	3	6	9
3	9	8	5	6	4	2	1	7

Killer 9753

8	5	3	2	9	1	4	7	6
2	4	1	5	7	6	9	3	8
9	6	7	8	4	3	2	5	1
5	7	8	4	2	9	1	6	3
3	2	9	1	6	8	7	4	5
4	1	6	3	5	7	8	9	2
6	3	2	9	8	4	5	1	7
7	8	4	6	1	5	3	2	9
1	9	5	7	3	2	6	8	4

Cryptic Quintagram

- 1 Rat
- 2 Judas
- 3 Sneaky
- 4 Informer
- 5 Supergrass

Suko 4259

7	3	8
16	19	
4	2	6
16	14	
9	1	5

Brain Trainer

- Easy 25
- Medium 495
- Harder 6,273

Word watch

- Owely** (c) Equality in financial transactions (*Collins*)
- Lucifugous** (c) Shunning or avoiding light (*Chambers*)
- Jerkwater** (c) (Of a place) small and remote (*OED*)

Chess – Winning Move

1 g7+! crashes through as after 1 ... Qxg7 2 Rh8+ Qxh8 3 Rxx8+ Ke7 4 Qg5+ forces mate, eg 4 ... f6 5 Qg7 or 4 ... Kd7 5 Qxd8

Samurai medium

Fill each grid so that every column, every row and every 3x3 box contains the digits 1 to 9. Where the puzzles overlap, the rows and columns do not go beyond their usual length.

		3		6		7						4			8	5			
			2	7			9					7		6	3	2			
	4			9	1							7	6		4				
6	3			9	1	5						4		8	6	2		7	
		5					9	1				6		2	1		3	5	
				6								2							
		1							7	1	5								
3	2										3				2	5	9	1	
5			1						6	9	5			7	9				
						8									9				
						6									1				
						3									8				
				5	4			3	4	2					8			6	
	8	6	9	7					9								5	7	
									3	8	6					1			
								8						4					
	1	8		4	3											9			
9		2	7		8									2	9	1		3	8
	3					2	1							4	3			9	
2	7	1		8										7		2	9		
8	6				5										5	1		8	

Futoshiki

Fill the blank squares so that every row and column contains each of the numbers 1 to 5 once only. The symbols between the squares indicate whether a number is larger (>) or smaller (<) than the number next to it.

□	□	4	□	□	
∨				∨	
□	>	□	□	3	□
^					
□	<	□	□	□	□
					^
□	<	□	□	□	□
□	□	□	□	□	□

Train Tracks

Lay tracks to enable the train to travel from village A to village B. The numbers indicate how many sections of track go in each row and column. There are only straight sections and curved sections. The track cannot cross itself.

3
3
2
1
2
1
6
8

2
4
5
5
3
4
2
1

A

B

Sudoku fiendish

					5	4	
6	1		9				
		8	6		7		
7		3		6	2		
			8				
9		4		7	1		
		5	4			2	
3	2		1				
						3	6

Killer tricky

Fill the grid so that every column, every row and every 3x3 box contains the digits 1 to 9. Each set of cells joined by dotted lines must add up to the target number in its top-left corner. Within each set of cells joined by dotted lines, a digit cannot be repeated.

6	30		9		16		17
				15	6		
14		7	15		21		14
10			7				
15	16		8		22	13	
		13		23		5	3
			8				12
12	7	14			9	19	
			11				8

Suko

30	23	
23	20	

15	16	14
----	----	----

Place the numbers 1 to 9 in the spaces so that the number in each circle is equal to the sum of the four surrounding spaces, and each colour total is correct

Codeword

Every letter in the crossword-style grid, right, is represented by a number from 1 to 26. Each letter of the alphabet appears in the grid at least once. Use the letters already provided to work out the identity of further letters. Enter letters in the main grid and the smaller reference grid until all 26 letters of the alphabet have been accounted for. Proper nouns are excluded.

19	1	16	23		15	10	17	24	4	1	13	22
7		18		15		1		17		3		17
11	7	3	6	5	1	24		22	1	24	23	4
1		7		1		5		18		1		23
8	23	8	17	22		1	3	3	17	5	2	
18				20		24				17		15
24	18	5	5	23	4		19	17	23	15	25	18
2		25				4		22				21
	19	7	8	26	25	23		15	2	8	17	5
7		24		7		20		7		10		23
3	8	23	15	15		8	17	14	14	18	7	22
10		7		18		23		23		22		3
23	12	17	7	25	25	23	4		9	1	22	23

A B C D E F G H I J K L M N O P Q R S T U V W X Y Z

1	2	3	4	5	6	7	8	9	10	11	12	13
14	15	16	17	18	19	20	21	22	23	24	25	26

Mini Sudoku

Fill in the grid so that every column, every row and every 3x2 box contains the digits 1 to 6

	2			3	
		6	2		
3	6			4	2
1	4			6	3
		3	4		
	5			1	

Solutions in tomorrow's Times2

THE  TIMES

MindGames Tuesday October 29 2024
Brain boost puzzles

Yesterday's solutions

SAMURAI

2	7	5	3	4	1	8	6	9				8	5	7	4	1	2	9	6	3
1	9	4	7	6	8	5	3	2				2	6	9	7	5	3	1	4	8
8	6	3	2	5	9	4	1	7				1	4	3	8	9	6	5	7	2
5	2	7	4	9	6	1	8	3				7	3	6	9	4	5	8	2	1
4	8	6	1	3	2	9	7	5				9	8	4	3	2	1	7	5	6
9	3	1	8	7	5	6	2	4				5	1	2	6	7	8	3	9	4
3	1	9	6	2	4	7	5	8	3	2	4	6	9	1	2	8	7	4	3	5
7	5	8	9	1	3	2	4	6	8	9	1	3	7	5	1	6	4	2	8	9
6	4	2	5	8	7	3	9	1	5	7	6	4	2	8	5	3	9	6	1	7
						8	1	7	4	3	2	5	6	9						
						5	2	4	9	6	8	7	1	3						
						6	3	9	7	1	5	8	4	2						
2	4	5	7	1	8	9	6	3	2	5	7	1	8	4	2	3	6	9	5	7
1	8	3	9	6	5	4	7	2	1	8	3	9	5	6	8	7	4	1	3	2
9	7	6	2	4	3	1	8	5	6	4	9	2	3	7	5	9	1	4	8	6
7	6	2	1	5	9	8	3	4				7	6	1	3	8	9	5	2	4
4	3	9	8	2	7	6	5	1				3	2	5	6	4	7	8	9	1
8	5	1	6	3	4	2	9	7				8	4	9	1	2	5	6	7	3
5	1	4	3	9	6	7	2	8				6	1	2	7	5	8	3	4	9
6	2	8	5	7	1	3	4	9				4	7	8	9	1	3	2	6	5
3	9	7	4	8	2	5	1	6				5	9	3	4	6	2	7	1	8

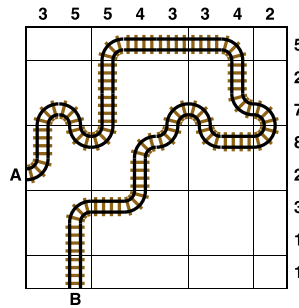
SUKO

9	6	3
5	7	1
4	2	8

MINI SUDOKU

2	1	6	4	5	3
3	5	4	6	2	1
6	3	5	1	4	2
4	2	1	5	3	6
1	4	2	3	6	5
5	6	3	2	1	4

TRAIN TRACKS



FUTOSHIKI

2	3	4	>	1	5	
					∨	
5	2	1	3	4		
			^	^		
1	4	2	5	3		
4	<	5	3	2	>	1
3	1	5	>	4	2	

SUDOKU

7	4	6	9	2	8	1	5	3
3	2	8	6	1	5	4	9	7
1	9	5	3	7	4	2	6	8
5	7	1	8	6	2	9	3	4
4	8	9	7	3	1	6	2	5
6	3	2	4	5	9	8	7	1
2	6	7	1	4	3	5	8	9
9	1	3	5	8	6	7	4	2
8	5	4	2	9	7	3	1	6

KILLER

9	1	7	2	5	8	6	3	4
5	6	2	4	3	1	7	9	8
3	8	4	7	6	9	1	5	2
6	9	1	8	2	5	4	7	3
4	2	8	1	7	3	9	6	5
7	3	5	9	4	6	2	8	1
1	7	9	3	8	2	5	4	6
2	5	3	6	9	4	8	1	7
8	4	6	5	1	7	3	2	9

CODEWORD

G	U	M	P	T	I	O	N	P	L	A	N
I	U	Y	F	B	E	O					
R	A	Z	O	R	F	L	U	M	M	O	X
T	Z	E	I	R	U	I					
H	O	L	T	S	C	E	N	A	R	I	O
S	I	D	I	N	G	U	N	L	E	S	
W											
E	X	T	E	R	N	A	L	S	T	Y	E
R	A	E	N	I	R	N					
V	I	L	L	A	I	N	S	Q	U	A	D
E	O	T	O	L	S	E					
D	U	N	K	I	N	J	E	C	T	E	D