



Above: Exchange Place/HarborSide on the Jersey City Waterfront
Photo: Jordan Lankford

The Hudson Transportation Management Association (TMA), a division of the Hudson County Improvement Authority, is dedicated to reducing traffic and enhancing mobility in order to reduce automotive carbon emissions and improve economic development. The Hudson TMA also acts as a liaison to transportation agencies, ready to help any commuter or employer with their transportation concerns. Hand in hand with encouraging the use of mass transportation, carpooling, van pooling, walking and biking, the TMA provides safety programs for children and adults. The TMA offers assistance to municipalities, local businesses and commuters to improve the county's transportation infrastructure and simplify the daily commute.

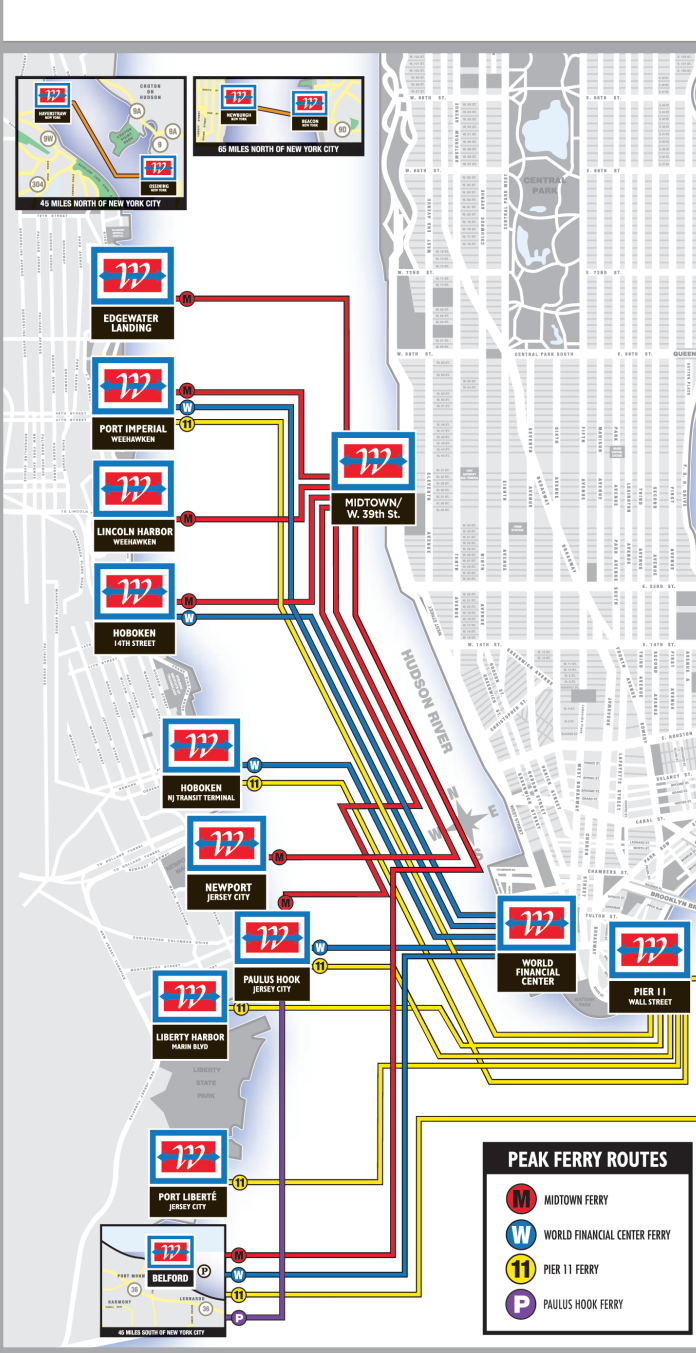


Getting You There by Ferry



For more information call 1.800.533.3779 or www.nywaterway.com
Photo: NY Waterway

NY Waterway Ferry Routes Map



Port Imperial Ferry Terminal
Photo: Southstar LLC / FHC TMA

NJ Transit Buses To NY Waterway Terminals

Port Imperial Terminal/Weehawken	
23	158
156	159

NJ Transit Terminal/Hoboken	
22	87
64	89
68	126
85	23



Liberty Science Center
Photo: Southstar LLC / FHC TMA

This map is published for the convenience of the public and strives for accuracy. It is, however, only a current guide for basic information. As routes and schedules are subject to change at any time, it is suggested you call the appropriate carrier for the latest information to assist you in your travel plans. The County of Hudson, the HCIA and the Hudson TMA assume no liability resulting from errors in this publication.

The map was prepared in cooperation with the US Department of Transportation and the Federal Highway Administration by grants administered through New Jersey Transit and the North Jersey Transportation Planning Authority. The Hudson TMA would like to thank the Hudson County Division of Planning and New Jersey Transit for their invaluable assistance in providing materials and data.



Getting You There by Bus

For more information call 1.973.275.5555 or www.njtransit.com
Schedules are subject to change without notice

NJT Route 1 NEWARK - JERSEY CITY

NJT Route 2 SECAUCUS - JOURNAL SQUARE

NJT Route 6 OCEAN AVENUE - JOURNAL SQUARE

NJT Route 10 BAYONNE - JERSEY CITY

NJT Route 22/22X HILLSIDE - UNION CITY - HOBOKEN EXPRESS

NJT Route 23 HOBOKEN - PORT IMPERIAL - NORTH BERGEN

NJT Route 30 NORTH ARLINGTON - KEARNY - NEWARK

NJT Route 40 KEARNY - JERSEY GARDENS

NJT Route 63/64 LAKEWOOD - JERSEY CITY - WEEHAWKEN

NJT Route 67 TOMS RIVER - LAKEWOOD - N.W.K. - J.S.D. - WEEHAWKEN

NJT Route 68 OLD BRIDGE - EAST BRUNSWICK - JERSEY CITY - WEEHAWKEN

NJT Route 76/76X HACKENSACK - KEARNY - EAST NEWARK

NJT Route 78 NEWARK - SECAUCUS

NJT Route 80 JERSEY CITY - NEWARK AVENUE

NJT Route 81/81X GREENVILLE - BAYONNE

NJT Route 82 UNION CITY - JERSEY CITY

NJT Route 83 HACKENSACK - JERSEY CITY

NJT Route 84 BERGENLINE - PARK AVENUE

NJT Route 85 HOBOKEN - HARMON MEADOW - MILL CREEK

NJT Route 86 NUNGESSERS - UNION CITY - NEWPORT CENTRE

NJT Route 87 KING DRIVE - JERSEY CITY - HOBOKEN

NJT Route 88 NORTH BOULEVARD - JOURNAL SQUARE

NJT Route 89 NORTH BERGEN - HOBOKEN

NJT Route 107 IRVINGTON - NEW YORK

NJT Route 108 NEWARK - UNION CITY - NEW YORK

NJT Route 111 NEW YORK - UNION CITY - JERSEY GARDENS - IKEA

NJT Route 115 RAHWAY - NEW YORK

NJT Route 119 BAYONNE - JERSEY CITY - NEW YORK P.A.B.T.

NJT Route 120 BAYONNE - DOWNTOWN NEW YORK

NJT Route 121 NORTH BERGEN - UNION CITY - NEW YORK

NJT Route 122 SECAUCUS - NEW YORK

NJT Route 123 JERSEY CITY - UNION CITY - NEW YORK

NJT Route 124/129/329 HARMON COVE - NEW YORK - SECAUCUS - NEW YORK

NJT Route 125 JOURNAL SQUARE - NEW YORK

NJT Route 126 HOBOKEN - NEW YORK

NJT Route 127 RIDGEFIELD - UNION CITY - NEW YORK

NJT Route 128 BOULEVARD EAST - NEW YORK

NJT Route 148 ELMWOOD PARK - HACKENSACK - NEW YORK

NJT Route 154 PORT LEE - PALISADES PARK - UNION CITY - NEW YORK

NJT Route 155/168 PARAMUS - RIDGEFIELD PARK - NEW YORK

NJT Route 156 ENGLEWOOD CLIFFS - UNION CITY - WEEHAWKEN

NJT Route 158 FORT LEE - EDGEWATER - WEEHAWKEN - NEW YORK

NJT Route 159 FORT LEE - WEEHAWKEN - UNION CITY - NEW YORK

NJT Route 160 ELMWOOD PARK - WALLINGTON - NEW YORK

NJT Route 161 PATERSON - PASSAIC - UNION CITY - NEW YORK

NJT Route 162/163 RIDGEWOOD - MAYWOOD - NEW YORK

NJT Route 165 WESTWOOD - NORTH BERGEN - WEEHAWKEN - NEW YORK

NJT Route 166 TENAFLY - NORTH BERGEN - WEEHAWKEN - NEW YORK

NJT Route 167 HARRINGTON PARK - DUMONT - UNION CITY - NEW YORK

NJT Route 181 UNION CITY - NEW YORK

NJT Route 188 RIVER ROAD - NORTH BERGEN - NEW YORK

NJT Route 190 PATERSON - UNION CITY - NEW YORK

NJT Route 191 WILLOWBROOK - LITTLE FALLS - UNION CITY - NEW YORK

NJT Route 192 CLIFTON - UNION CITY - NEW YORK

NJT Route 319 NEW YORK - JERSEY CITY - ATLANTIC CITY - OCEAN CITY

NJT Route 320 MILL CREEK - HARMON MEADOW - NORTH BERGEN PARK/RIDE - NEW YORK

NJT Route 751/755 PARAMUS - FAIRVIEW - FORT LEE - EDGEWATER

De Camp 99 HARRISON KEARNY - NEW YORK P.A.B.T.

BROADWAY BUS BAYONNE

A&C 4 MERRITT STREET - EXCHANGE PLACE - NEWPORT MALL

A&C NEWPORT, MONTGOMERY & WESTSIDE

A&C RTE. 440 SHOPPER

A&C SOCIETY HILL - JOURNAL SQUARE

A&C BERGEN AVENUE

Academy LINCOLN, NJ/GSP EXIT 109 - NEWPORT

Trans-Bridge BETHLEHEM, PA - NEWPORT

Getting You There by Commuter Rail

Main/Bergen County

Pascack Valley

Morris & Essex

Montclair-Boonton

Northeast Corridor

Raritan Valley

North Jersey Coast

At Secaucus Junction

Transfer at Secaucus Junction for:

- Amtrak Trains, NJ Transit's Northeast Corridor Line and New Jersey Coastline Trains.

Getting You There by Path Train

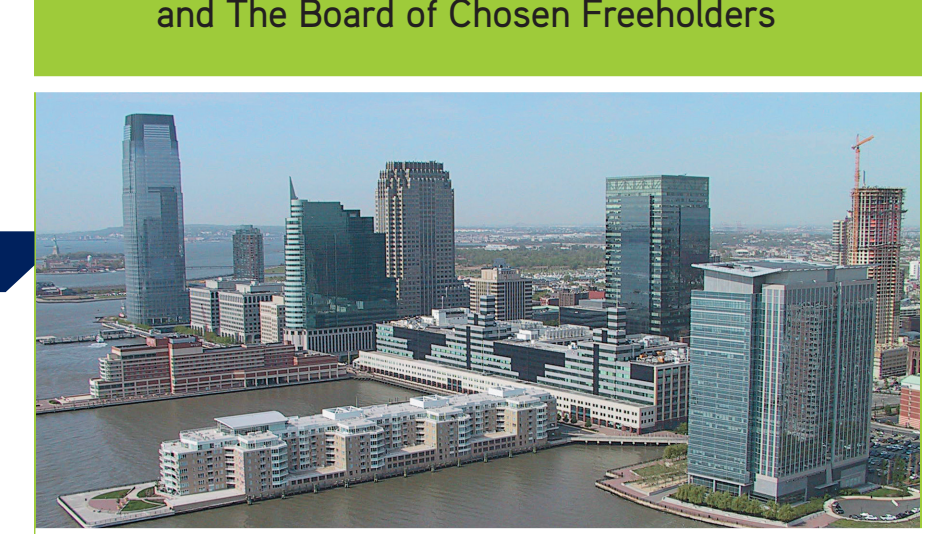
PATH Services

Getting You There by Path Train

Getting You There

A Division of the Hudson County Improvement Authority

Thomas A. DeGise,
Hudson County Executive
and The Board of Chosen Freeholders



Bayonne - East Newark - Guttenberg - Harrison - Hoboken - Jersey City - Kearny - North Bergen - Secaucus - Union City - Weehawken - West New York

For more transportation information call The Hudson Transportation Management Association or visit our website

201.324.6222 www.hudsontma.org

Hudson County Transit Map

COURTESY HUDSON TMA

Getting You There



2018 Transit Map



Getting You There by Light Rail

For more information call 1.973.275.5555 www.njtransit.com
Photo: Michael Rosenbluth / NJ TRANSIT

Getting You There by Path Train

PATH Services

Getting You There by Path Train



Liberty National Golf Course and Port Liberty, Jersey City



Society Hill, Jersey City



SEE BACK OF MAP FOR DETAILED BUS ROUTES

SEE BACK OF MAP FOR NJ TRANSIT COMMUTER SERVICE OUT OF HOBOKEN

SEE BACK OF MAP FOR NY WATERWAY FERRY ROUTES

ROUTES SERVING THE PORT AUTHORITY BUS TERMINALS

107	122	128	159	167	
108	123	129	160	168	
111	124	144	161	190	319
115	125	154	163	191	320
119	126	156	165	192	
121	127	158	166	195	

- PEAK HOUR FERRY ROUTES AND CONNECTING BUS ROUTES
- Midtown Ferry
- Pier 11 Ferry
- World Financial Center Ferry
- Parking
- PEAK HOUR BUS ROUTES
- 34th Street
- 42nd Street
- 50th Street
- 57th Street
- Downtown Local AM
- Downtown Local PM



HUDSON COUNTY AND VICINITY



2018 HUDSON COUNTY TRANSIT MAP

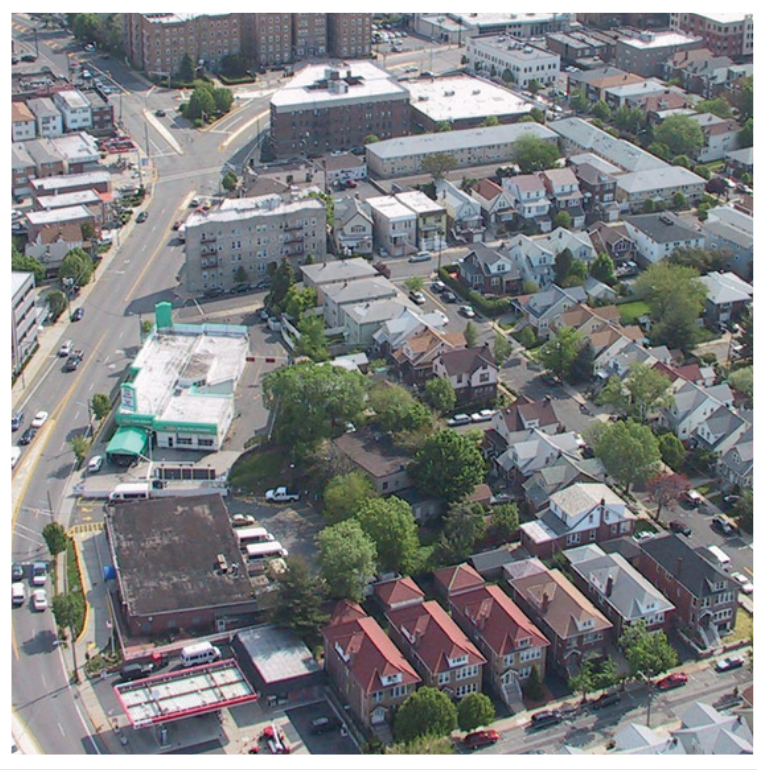
Bus Service

- Bus Terminal
- NJ Transit Local Routes
- Routes to Port Authority / Midtown Manhattan
- Routes to Lower Manhattan
- Privately Operated Bus Services
- A&C Bus
- Academy Bus
- Broadway Bus
- DeCamp D99
- Transbridge Bus

Rail Service

- Hudson Bergen Light Rail (HBLR)
- HBLR Proposed Extension
- NJ Transit Rail System
- PATH
- Airport
- College / University
- Ferry Terminal / Route
- Hospital
- Park & Ride Facility

See back of map for more detailed bus routes and information. Updated March 2018.



Kennedy Boulevard, North Bergen