

Online Data Supplement

Hospitalization and Critical Care of 109 Decedents with COVID-19 Pneumonia in Wuhan, China

Rong-Hui Du, Li-Min Liu, Wen Yin, Wen Wang, Lu-Lu Guan, Ming-Li Yuan, Yu-Lei Li, Yi Hu, Xu-Yan Li, Bing Sun, Peng Peng, Huan-Zhong Shi

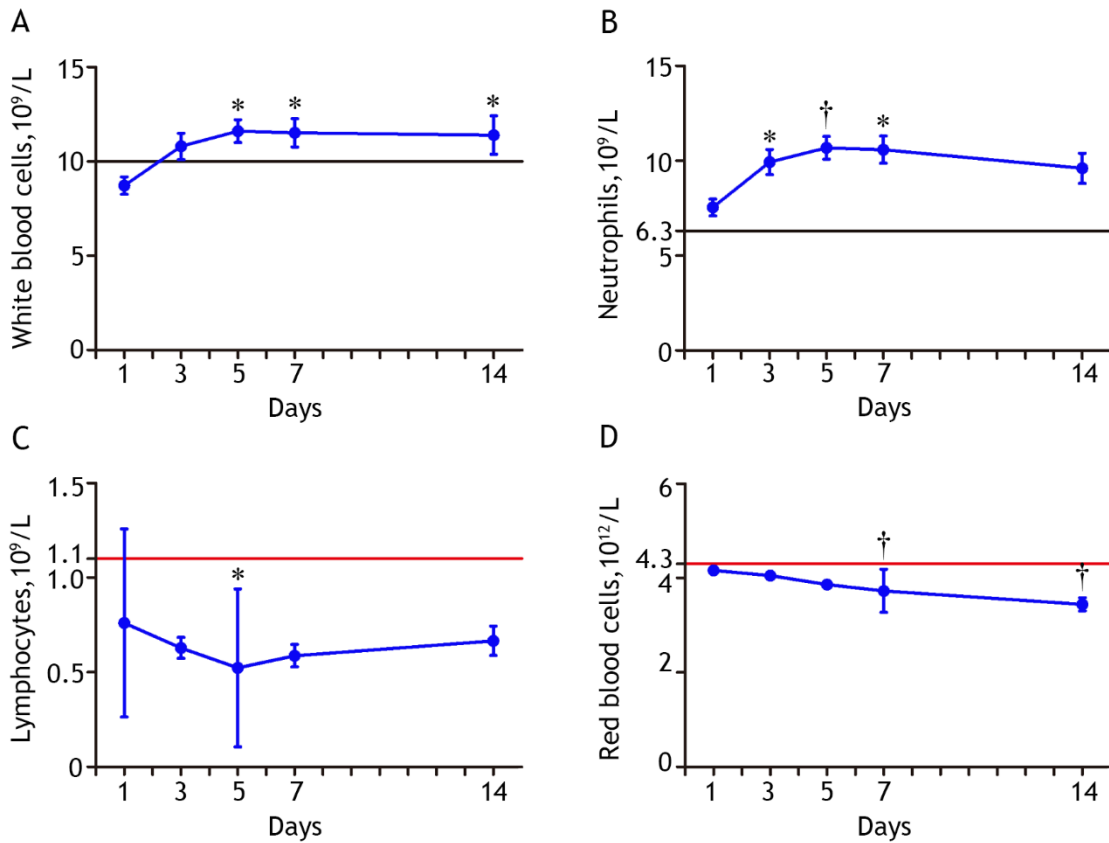


Figure E1. Dynamic Profile of Blood Cell Counts in Deceased Patients with COVID-19 Pneumonia. The changes in numbers of white blood cells (A), neutrophils (B), lymphocytes (C), and red blood cells (D) on the day 1 (n=109), 3 (n=76), 5 (n=72), 7 (n=72), and 14 (n=46) after hospitalization are presented. The lines in black show the upper normal limit of each parameter, and the lines in red show the lower normal limit. * $P < 0.05$, † $P < 0.01$ compared with day 1 determined by Student's t test (A, B and D) or Mann-Whitney U test (C).

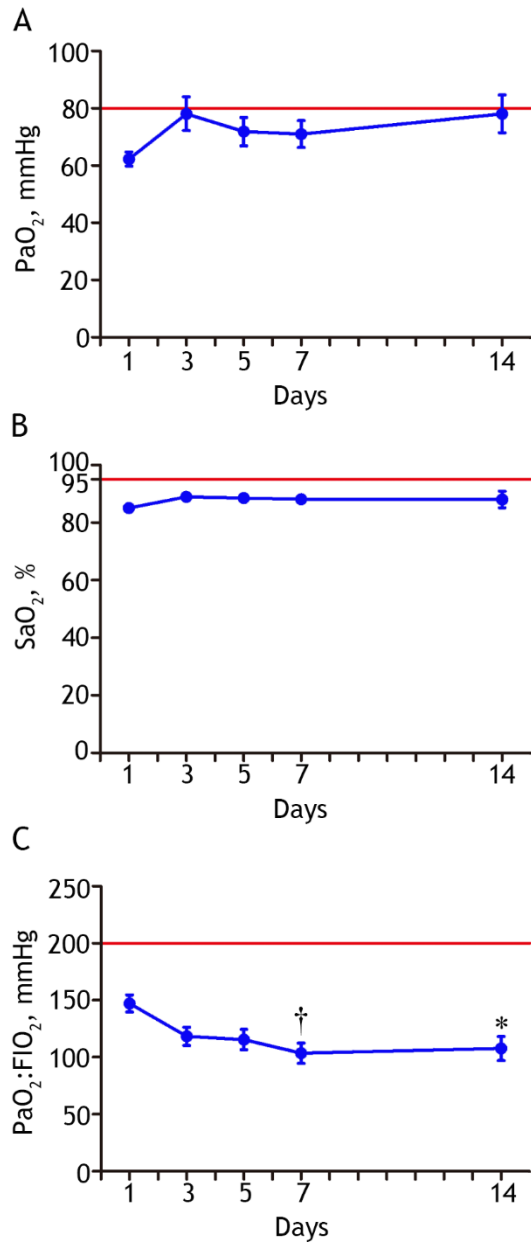


Figure E2. Dynamic Profile of Arterial Partial Pressure of Oxygen (PaO₂), Arterial Oxygen Saturation (SaO₂), and Fraction of Inspired Oxygen (PaO₂:F_IO₂) in Deceased Patients with COVID-19 Pneumonia. The changes in PaO₂ (A), SaO₂ (B), and PaO₂:F_IO₂ (C) on the day 1 (n=109), 3 (n=62), 5 (n=57), 7 (n=52), and 14 (n=32) after hospitalization are presented. The lines in red show the lower normal limit of each parameter. **P* < 0.05, † *P* < 0.01 compared with day 1 determined by Student's *t* test (A) or Mann-Whitney U test (B and C).

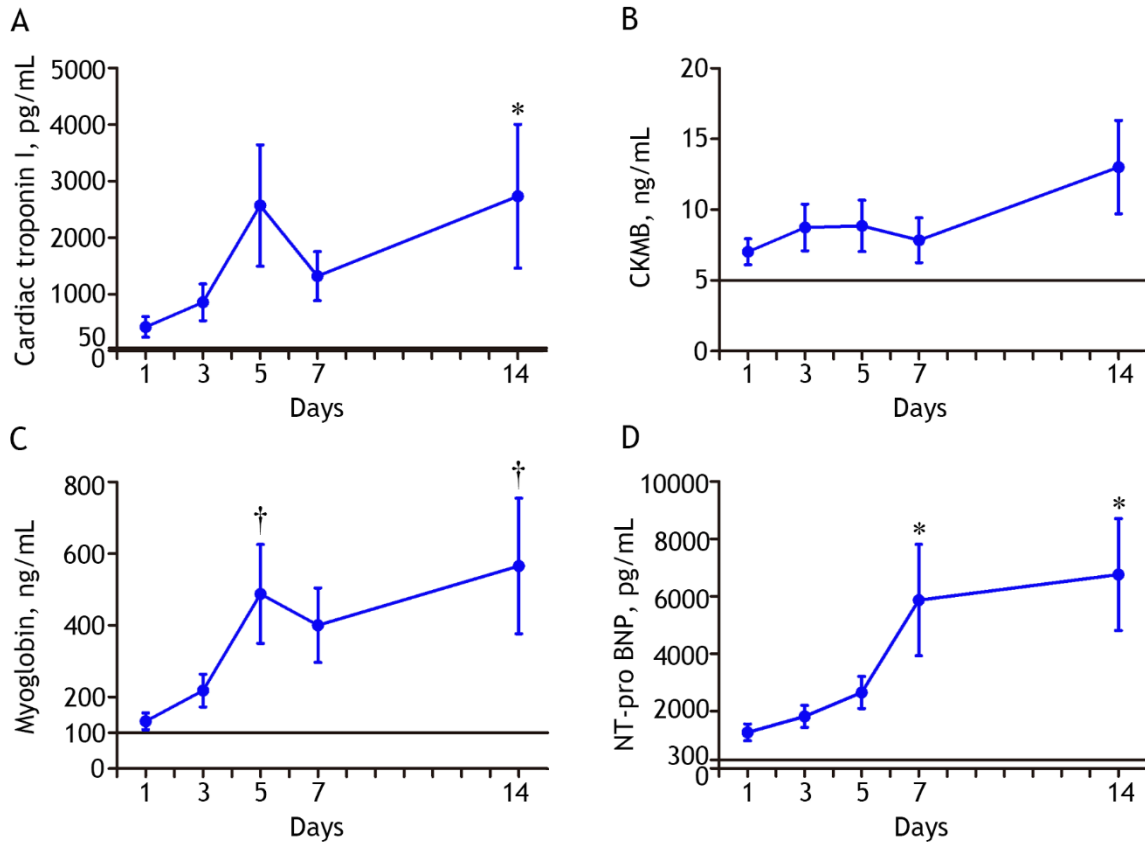


Figure E3. Dynamic Profile of Heart Function in Deceased Patients with COVID-19 Pneumonia. The changes in concentrations of cardiac troponin I (A), creatine kinase MB (CKMB) (B), myoglobin (C), and NT-pro-brain natriuretic peptide (BNP) on the day 1 (n=109), 3 (n=57), 5 (n=53), 7 (n=54), and 14 (n=43) after hospitalization are presented. The lines in black show the upper normal limit of each parameter. * $P < 0.05$, † $P < 0.01$ compared with day 1 determined by Mann-Whitney U test.

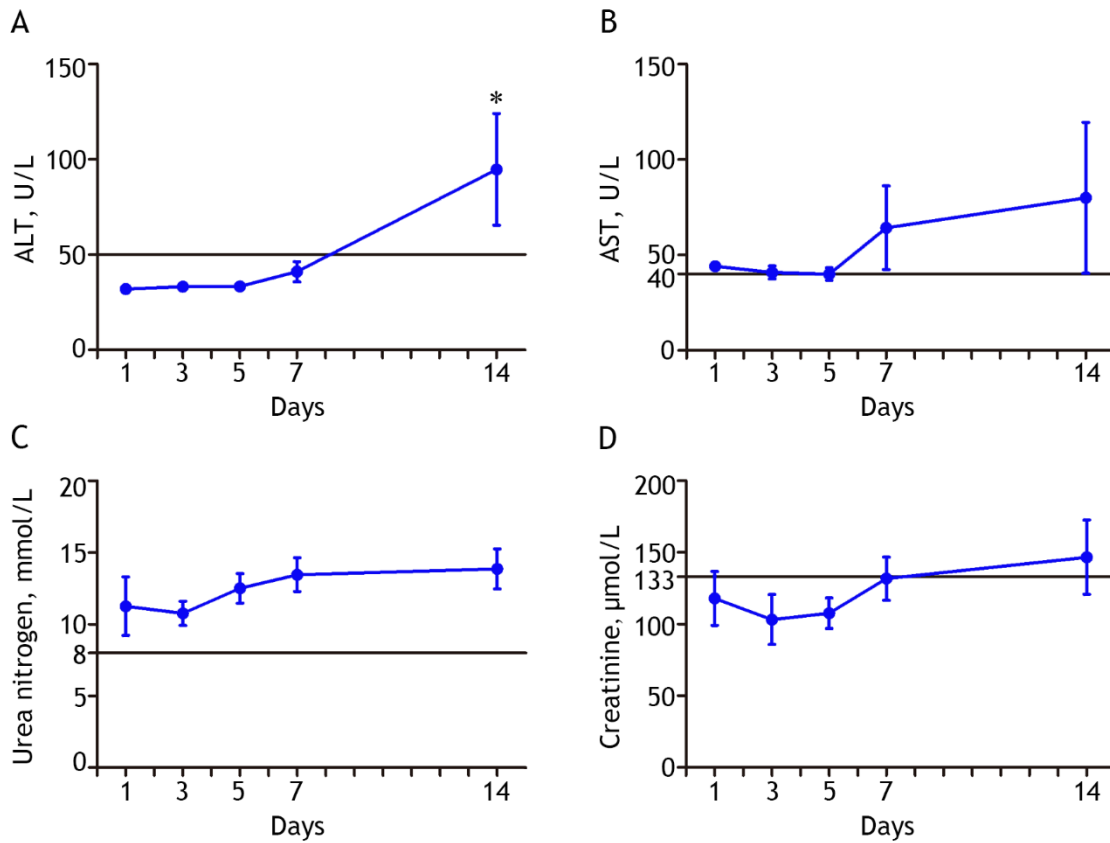


Figure E4. Dynamic Profile of Hepatic and Renal Function in Deceased Patients with COVID-19 Pneumonia. The changes in concentrations of alanine aminotransferase (A), aspartate aminotransferase (B), urea nitrogen (C), and creatinine on the day 1 (n=109), 3 (n=65), 5 (n=60), 7 (n=68), and 14 (n=38) after hospitalization are presented. The lines in black show the upper normal limit of each parameter. * $P < 0.01$ compared with day 1 determined by Mann-Whitney U test.

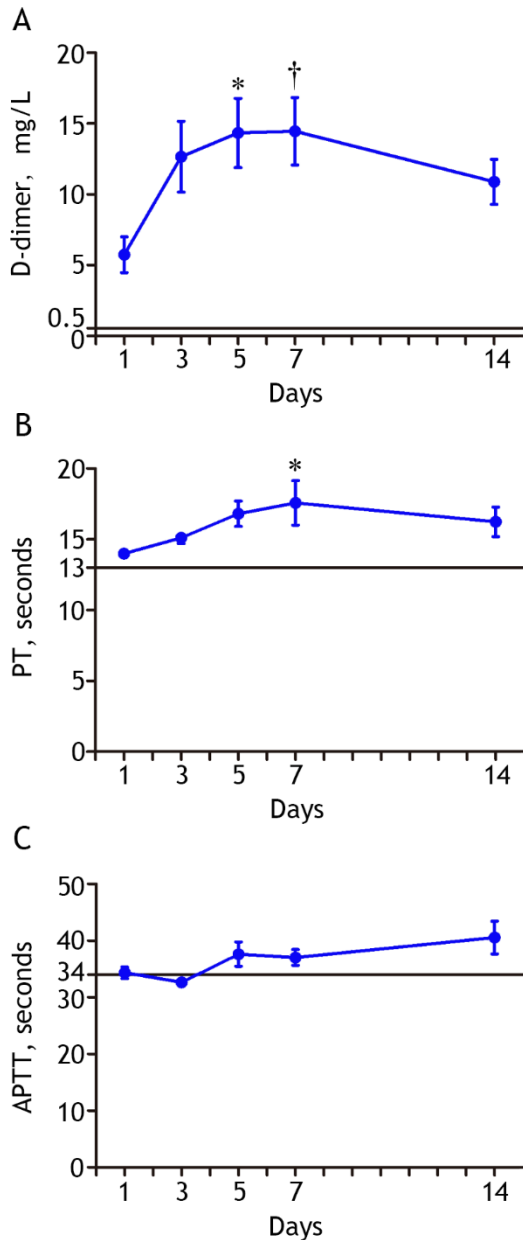


Figure E5. Dynamic Profile of Coagulation Function in Deceased Patients with COVID-19 Pneumonia. The changes in concentrations of D-dimer (A), prothrombin time (B), and activated partial thromboplastin time (C) on the day 1 (n=109), 3 (n=61), 5 (n=54), 7 (n=57), and 14 (n=34) after hospitalization are presented. The lines in black show the upper normal limit of each parameter. * $P < 0.05$, † $P < 0.01$ compared with day 1 determined by Mann-Whitney U test (figure A and B) or Student's t test (figure C).