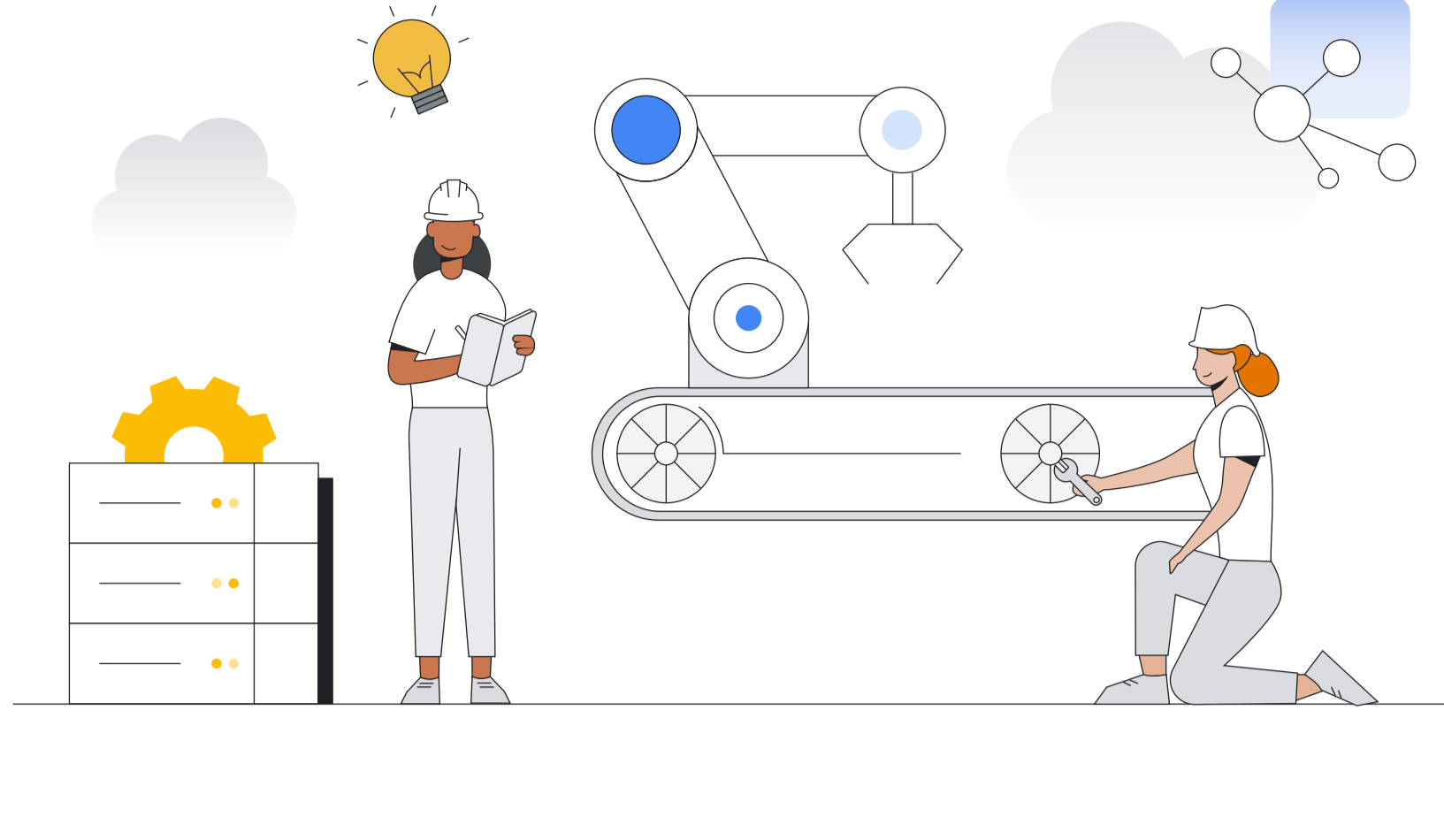


# Deliver modern manufacturing insights

Learn how to unlock speed, efficiency, and transformation opportunities with edge computing

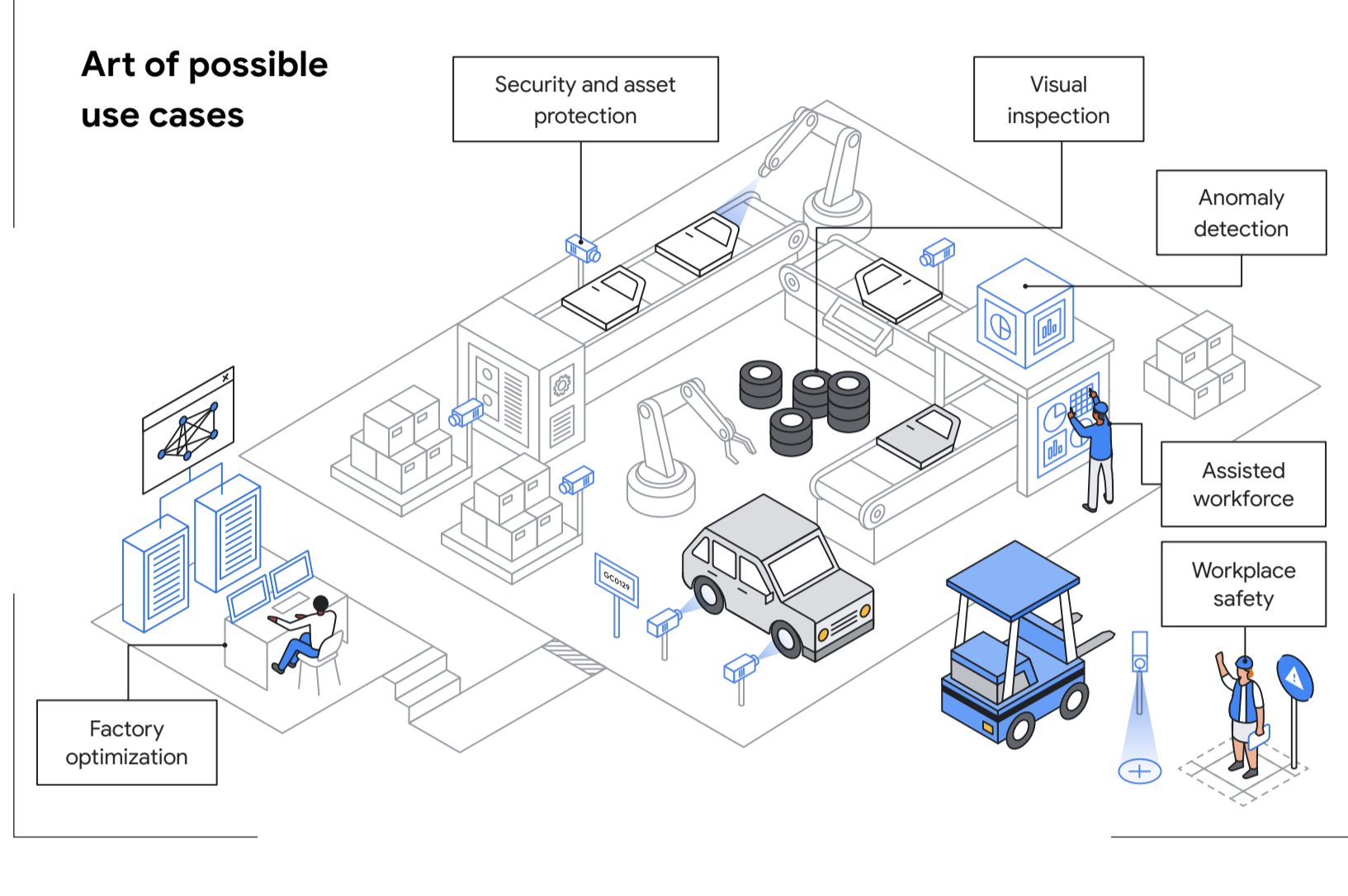


Shifting business models and customer expectations pose new challenges across industries. Here's what's trending and why manufacturing enterprises should leverage edge computing today.

## What is edge computing?

Edge computing enables data to be processed closer to where it was generated. For enterprises looking to improve their digital transformation, this unlocks powerful benefits such as greater network tolerance, improved data locality, minimized latency, and reduced costs.

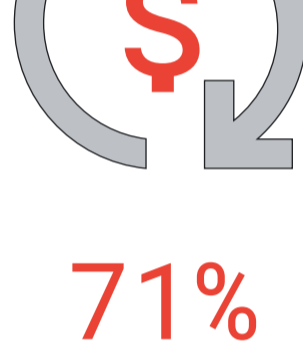
46% of manufacturers currently use edge computing.



## Manufacturing enterprises crave edge services

Intelligent manufacturing business transformation: how will your business leverage edge computing to bring more value to your customers?

Manufacturing enterprises are very positive about edge services and are prepared to invest today. Here's what they told Google Cloud about their plans.



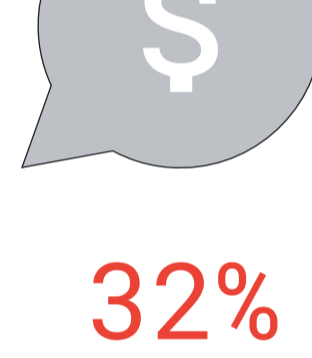
71%

plan to invest in next 12 months



84%

plan to spend \$100K or more at launch

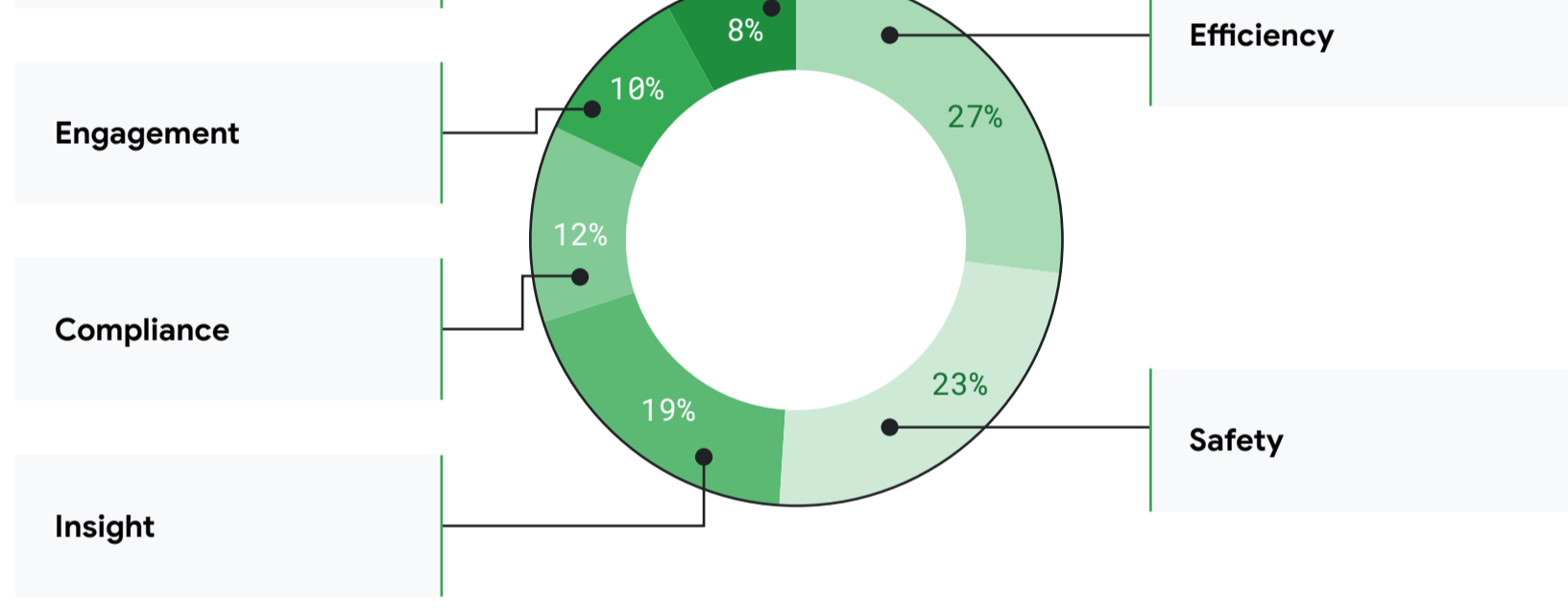


32%

are prepared to spend \$1M or more at launch

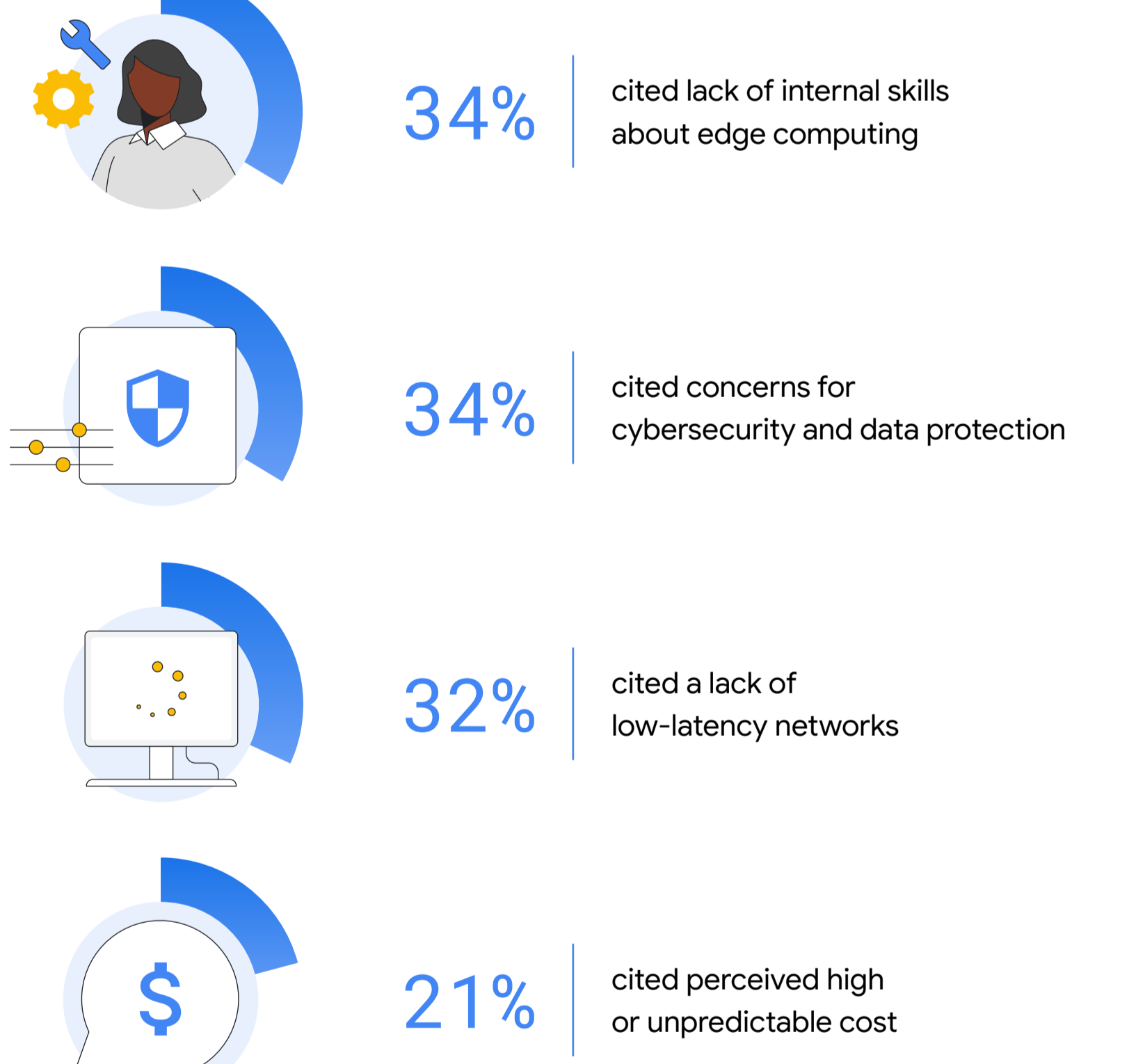
## Efficiency and safety are driving manufacturing investments into edge

Improving safety and efficiency are top goals of manufacturing edge investments, followed closely by compliance and better insights.

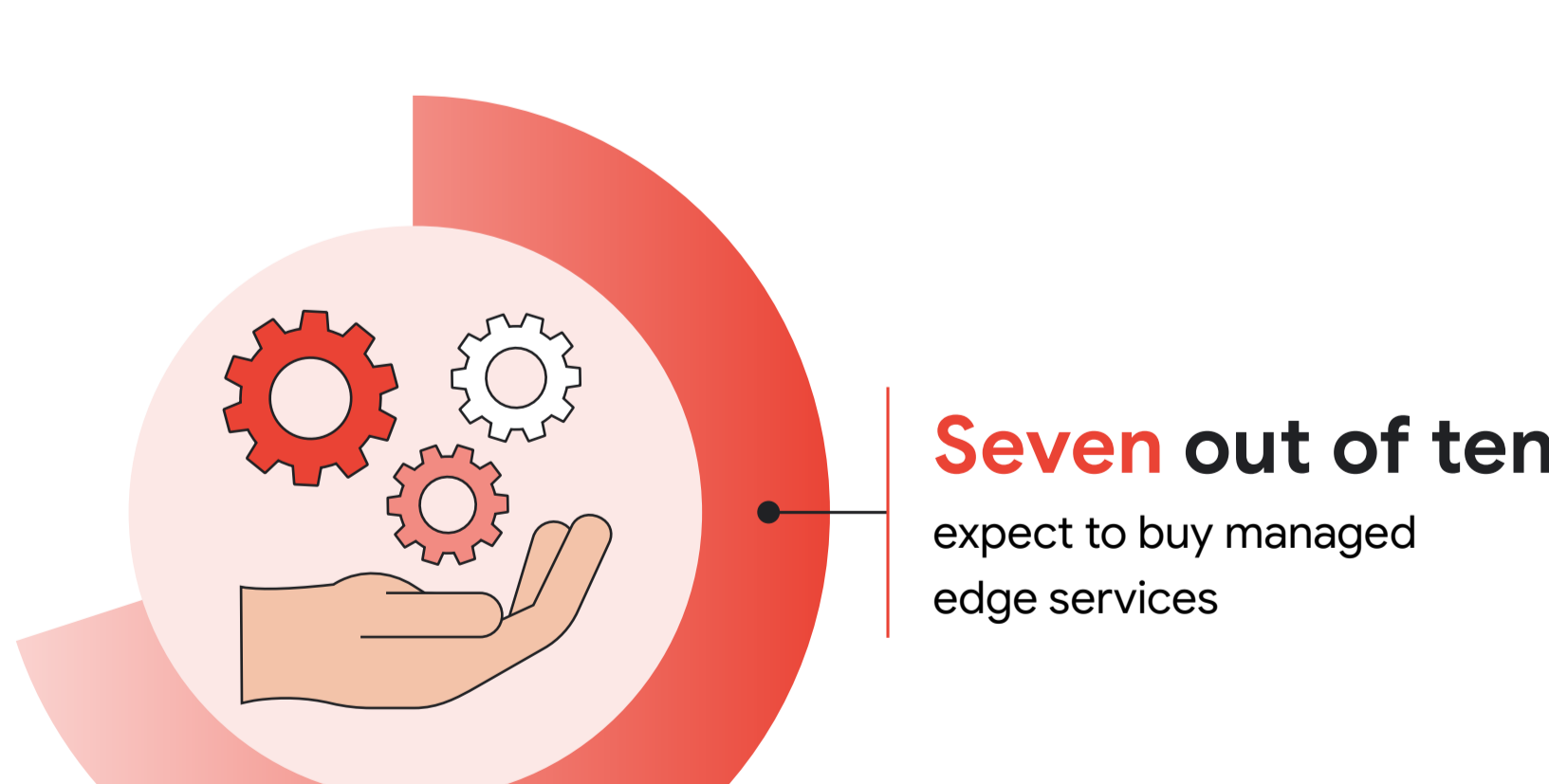


## Skills and data protection are the biggest concerns with adoption

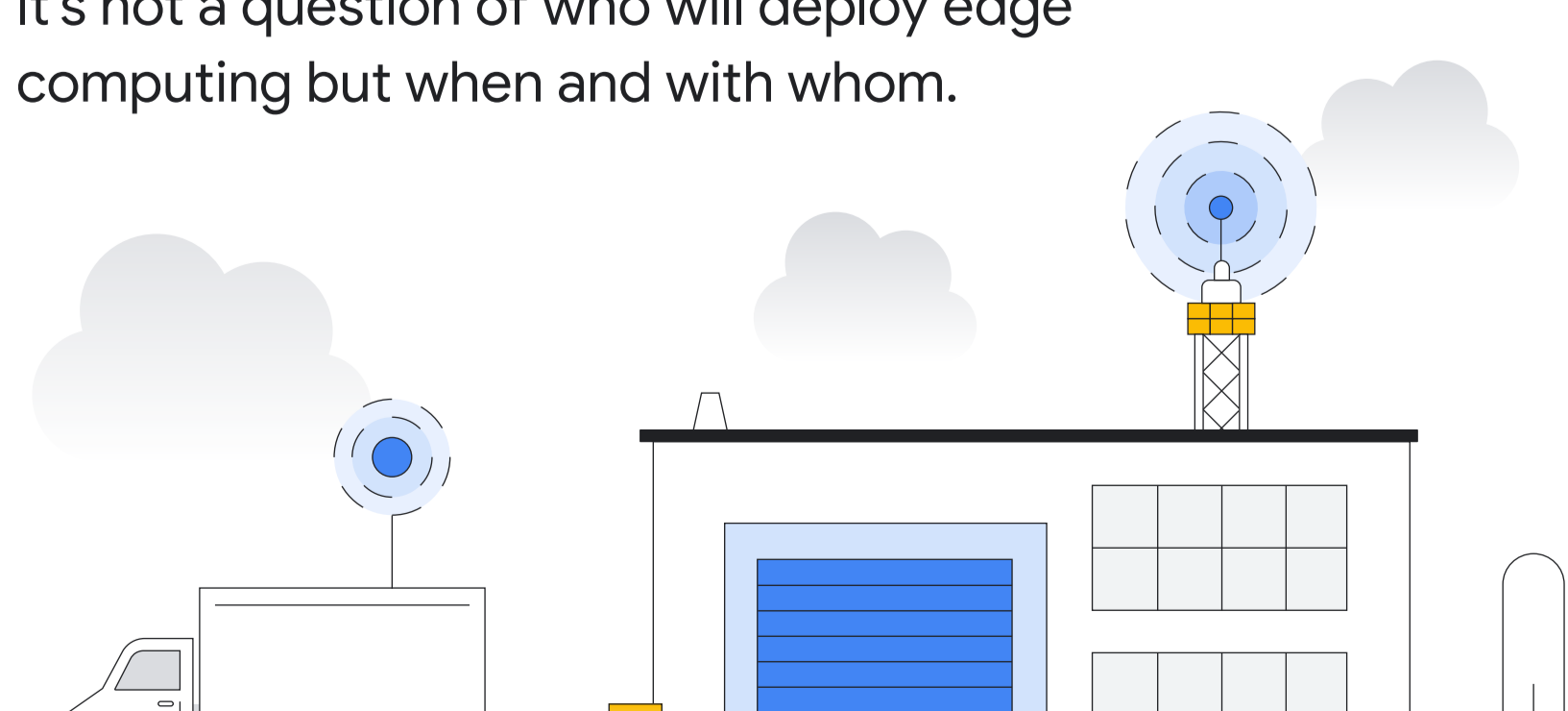
Technology standards are not one of the top barriers. The biggest barriers to the uptake of edge computing are below.



## Managed edge services is the desired consumption model



It's not a question of who will deploy edge computing but when and with whom.



Download the full report today and discover how you can transform your manufacturing business with edge computing.

