

## Additional file 1: Draft paper-based tools

### A: Structured look up table

#### NIHSS 13-18, Female, No History of Stroke, Age = 80

		Onset Time to Treatment (minutes)																		
		0	15	30	45	60	75	90	105	120	135	150	165	180	195	210	225	240	255	270
Systolic BP mm/Hg	180	0.31	0.31	0.31	0.31	0.31	0.31	0.31	0.31	0.31	0.31	0.31	0.31	0.31	0.31	0.31	0.31	0.31	0.31	0.31
		0.62	0.61	0.59	0.58	0.56	0.55	0.54	0.52	0.51	0.49	0.48	0.47	0.45	0.44	0.42	0.41	0.40	0.38	0.37
		0.31	0.29	0.28	0.27	0.25	0.24	0.22	0.21	0.20	0.18	0.17	0.15	0.14	0.13	0.11	0.10	0.08	0.07	0.06
	170	0.32	0.32	0.32	0.32	0.32	0.32	0.32	0.32	0.32	0.32	0.32	0.32	0.32	0.32	0.32	0.32	0.32	0.32	0.32
		0.66	0.64	0.63	0.62	0.60	0.59	0.58	0.56	0.55	0.54	0.52	0.51	0.49	0.48	0.47	0.45	0.44	0.42	0.41
		0.33	0.32	0.31	0.29	0.28	0.27	0.25	0.24	0.23	0.21	0.20	0.18	0.17	0.16	0.14	0.13	0.11	0.10	0.09
	160	0.33	0.33	0.33	0.33	0.33	0.33	0.33	0.33	0.33	0.33	0.33	0.33	0.33	0.33	0.33	0.33	0.33	0.33	0.33
		0.69	0.68	0.67	0.66	0.64	0.63	0.62	0.60	0.59	0.58	0.56	0.55	0.53	0.52	0.51	0.49	0.48	0.46	0.45
		0.36	0.35	0.33	0.32	0.31	0.30	0.28	0.27	0.26	0.24	0.23	0.21	0.20	0.19	0.17	0.16	0.14	0.13	0.12
	150	0.35	0.35	0.35	0.35	0.35	0.35	0.35	0.35	0.35	0.35	0.35	0.35	0.35	0.35	0.35	0.35	0.35	0.35	0.35
		0.73	0.72	0.70	0.69	0.68	0.67	0.66	0.64	0.63	0.62	0.60	0.59	0.58	0.56	0.55	0.53	0.52	0.51	0.49
		0.38	0.37	0.36	0.35	0.34	0.32	0.31	0.30	0.28	0.27	0.26	0.24	0.23	0.22	0.20	0.19	0.17	0.16	0.15
	140	0.36	0.36	0.36	0.36	0.36	0.36	0.36	0.36	0.36	0.36	0.36	0.36	0.36	0.36	0.36	0.36	0.36	0.36	0.36
		0.76	0.75	0.74	0.73	0.72	0.70	0.69	0.68	0.67	0.65	0.64	0.63	0.62	0.60	0.59	0.58	0.56	0.55	0.53
		0.40	0.39	0.38	0.37	0.36	0.35	0.34	0.32	0.31	0.30	0.29	0.27	0.26	0.25	0.23	0.22	0.20	0.19	0.18
	130	0.37	0.37	0.37	0.37	0.37	0.37	0.37	0.37	0.37	0.37	0.37	0.37	0.37	0.37	0.37	0.37	0.37	0.37	0.37
		0.79	0.78	0.77	0.76	0.75	0.74	0.73	0.71	0.70	0.69	0.68	0.67	0.65	0.64	0.63	0.61	0.60	0.59	0.57
		0.42	0.41	0.40	0.39	0.38	0.37	0.36	0.35	0.34	0.32	0.31	0.30	0.29	0.27	0.26	0.25	0.23	0.22	0.21
	120	0.38	0.38	0.38	0.38	0.38	0.38	0.38	0.38	0.38	0.38	0.38	0.38	0.38	0.38	0.38	0.38	0.38	0.38	0.38
		0.81	0.81	0.80	0.79	0.78	0.77	0.76	0.75	0.74	0.73	0.71	0.70	0.69	0.68	0.67	0.65	0.64	0.63	0.61
		0.44	0.43	0.42	0.41	0.40	0.39	0.38	0.37	0.36	0.35	0.34	0.32	0.31	0.30	0.29	0.27	0.26	0.25	0.24

At each interval, results are presented in the following order:

\* No treatment

No change / survival LOSS in independent state from treatment

Survival GAIN in independent state from treatment

\* Treatment with rt-PA

### B: Tables of decision rules

#### NIHSS 13-18 Male, History of Stroke, Age 80

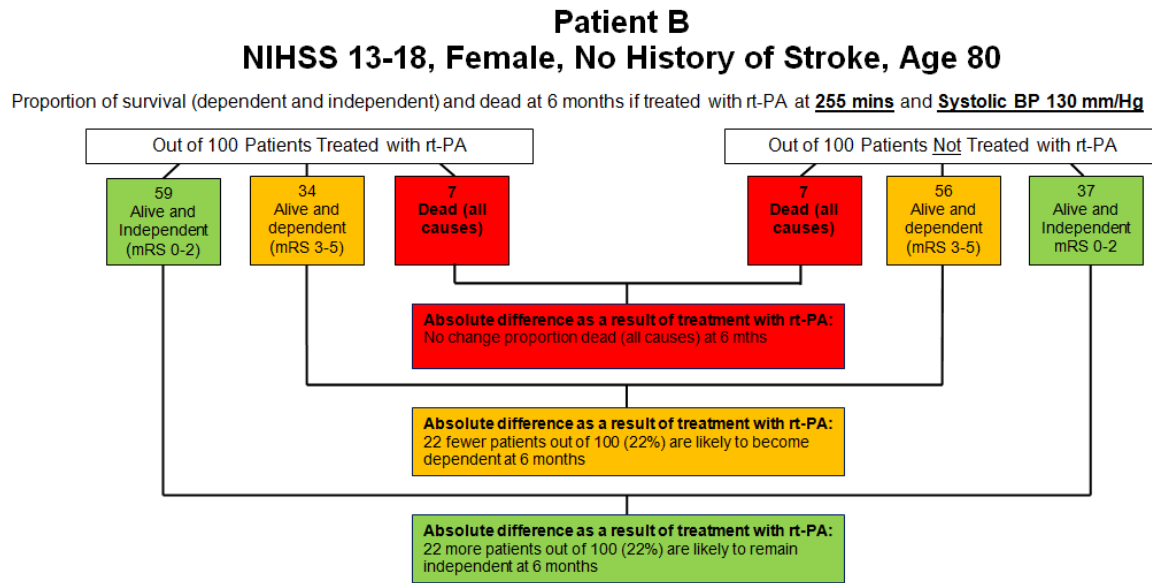
		OTT windows for absolute gains in QALYs			OTT windows for absolute gains in the proportion of survival - independent state (mRS 0-2) at 6 months			Proportion dead at 6 months	
		> 0	≥ 0.25 (3 mths)	≥ 0.5 (6 mths)	> 0	≥ 5	≥ 10		
Systolic BP	180	≤ 15	**	**	**	**	**	9 out of 100 (treated) 9 out of 100 (not treated)	
	170	≤ 45	**	**	≤ 45	**	**		
	160	≤ 75	**	**	≤ 75	≤ 30	**		
	150	≤ 105	**	**	≤ 105	≤ 60	**		
	140	≤ 135	**	**	≤ 135	≤ 90	≤ 30		
	130	≤ 165	≤ 15	**	≤ 165	≤ 120	≤ 60		
	120	≤ 195	≤ 60	**	≤ 195	≤ 150	≤ 90		

Consult relevant look-up tables for specific figures

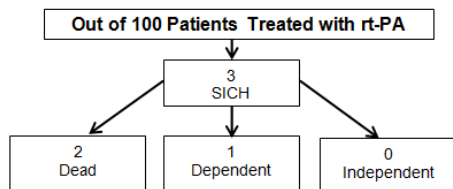
		OTT windows for absolute gains in mean life expectancy			OTT windows for absolute gains in expected time - independent state (mRS 0-2)			OTT windows for absolute decreases in expected time - dependent state (mRS 3-5)			OTT windows for absolute gains in the proportion of survival at 5 years		
		> 0	≥ 0.25 (3 mths)	≥ 0.5 (6 mths)	> 0	≥ 0.25 (3 mths)	≥ 0.5 (6 mths)	> 0	≥ 0.25 (3 mths)	≥ 0.5 (6 mths)	> 0	≥ 5	≥ 10
Systolic BP	180	≤ 15	**	**	≤ 15	**	**	**	**	**	**	**	**
	170	≤ 45	**	**	≤ 45	**	**	≤ 45	**	**	≤ 15	**	**
	160	≤ 75	**	**	≤ 75	**	**	≤ 75	**	**	≤ 45	**	**
	150	≤ 105	**	**	≤ 105	≤ 15	**	≤ 105	**	**	≤ 75	**	**
	140	≤ 135	**	**	≤ 135	≤ 45	**	≤ 135	**	**	≤ 105	**	**
	130	≤ 165	**	**	≤ 165	≤ 75	**	≤ 165	**	**	≤ 135	**	**
	120	≤ 195	≤ 15	**	≤ 195	≤ 105	**	≤ 195	**	**	≤ 165	**	**

\*\* At this systolic BP value there is not an OTT window associated with a treatment benefit for this category

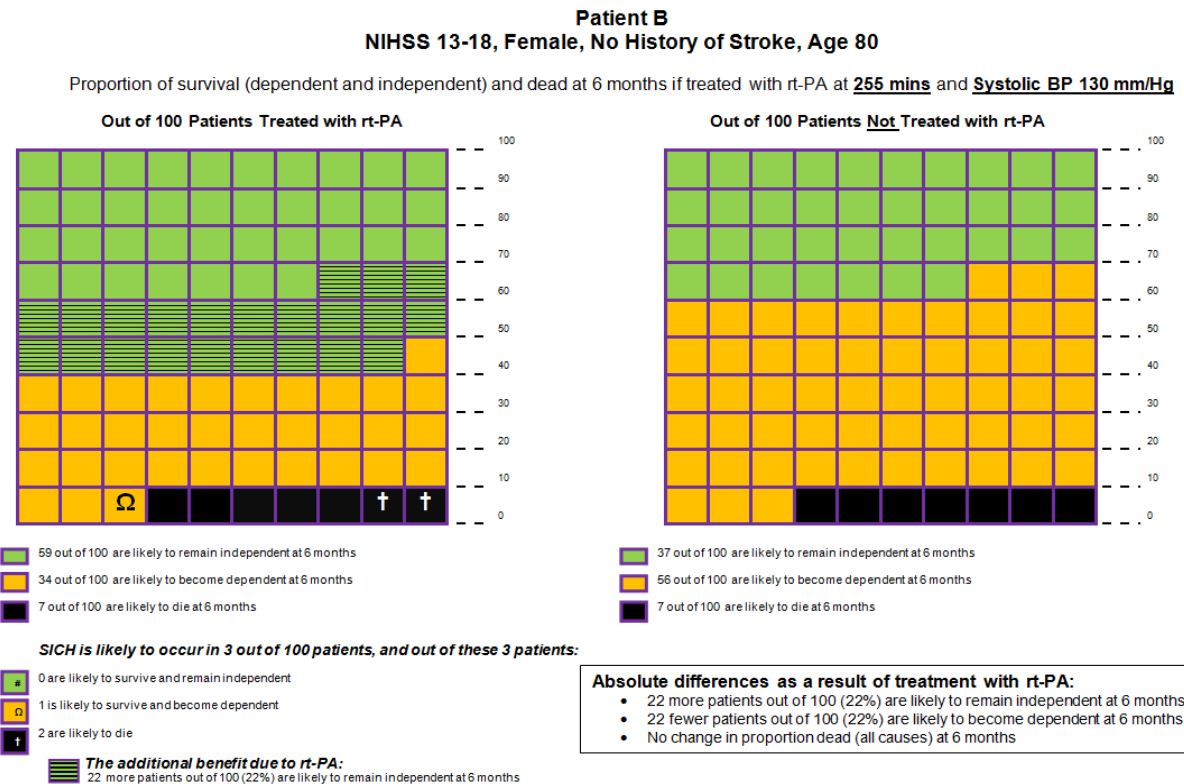
C: Flowchart diagram - horizontal orientation



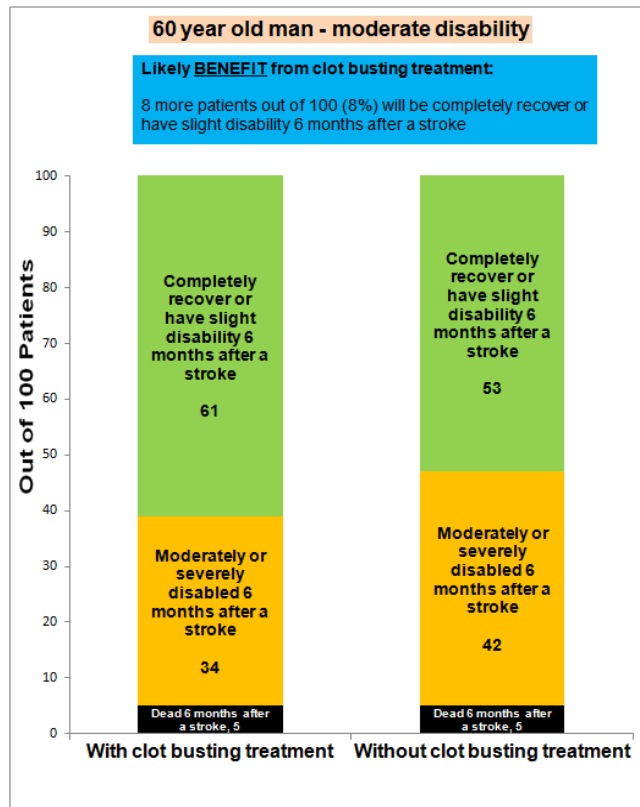
Proportion of SICH (SITS-MOST definition) and related outcomes after treatment with rt-PA



D: Pictograph



E: Stacked bar graph (independence, dependence and death)



F: Clustered bar graph (life expectancy and expected time in independent and dependent state)

