

Cisco SD-WAN Cloud Hub with Google Cloud

Zero days to set up. More reliable than internet. End-to-end security.

A multicloud environment is the new norm

In the past few years, enterprise cloud adoption and investment have been increasing at double-digit rates. Multicloud adoption is no longer a trend, it is the new norm. With most enterprises adopting a cloud strategy and increasing spend in Infrastructure-as-a-Service (IaaS), current WAN infrastructures need to evolve to support the new multicloud environments.

To help enterprises with their cloud journey, Cisco offers Cloud OnRamp as part of the Cisco® Catalyst SD-WAN solution. Cloud OnRamp simplifies and automates the experience of connecting on-premises environments to the cloud. With Cloud OnRamp you can automate the extension of a single Cisco Catalyst SD-WAN fabric to Google Cloud.



Key benefits

- **Ready-to-go global network:** Reduce provisioning from months to minutes with branch to Google Cloud network automation.
- **Highly available network:** Google Cloud's global infrastructure offers 99.95% availability and extensive points of presence across the world.
- **Ease of management:** Orchestrate both Cisco Catalyst SD-WAN and Google Cloud networking resources from a single management interface using Cisco Catalyst SD-WAN Manager for point-and-click automated provisioning.
- **End-to-end visibility:** Gain insight into and reporting of site-to-site connectivity performance across Google Cloud's global infrastructure.
- **SD-WAN policy automation:** Automate SD-WAN policy and optimize the application experience for custom-built cloud applications based on network and service telemetry.

Cisco SD-WAN Cloud Hub with Google Cloud: Simplified management and automated provisioning

Cisco and Google Cloud have joined together to further simplify multicloud adoption. Using Cisco SD-WAN Cloud Hub with Google Cloud, enterprises can enable site-to-cloud connectivity to access cloud workloads deployed across Google Cloud. Additionally, the Cisco Catalyst SD-WAN integration with Google's Network Connectivity Center enables on-demand provisioning of site-to-site connectivity over Google Cloud's global infrastructure. This integration offers enterprise customers an alternative option to connect their on-premises sites together using Google's reliable and high-performing global network, all under a single Cisco Catalyst SD-WAN fabric. Customers with existing workloads deployed in Google Cloud can leverage their current infrastructure for both cloud workloads and site-to-site connectivity over Google's global cloud infrastructure, allowing for a simplified network design.

The Cisco Cloud OnRamp solution also automates SD-WAN fabric extension to and over Google Cloud's network. This saves time, lowers operational costs, and reduces human error.

Cisco SD-WAN Cloud Hub also bridges DevOps and NetOps teams by allowing DevOps to define traffic profiles for custom-built applications in Google Cloud Service Directory and NetOps to translate those profiles into network policies in Catalyst SD-WAN Manager. The application metadata is pulled by Catalyst SD-WAN Manager automatically from Google Cloud Service Directory, which the Netops team can use to apply traffic policies and optimize the application experience based on network and service telemetry.

Cisco SD-WAN Cloud Hub with Google Cloud enables the following use cases:

Site to Google Cloud: Automate Cisco Catalyst SD-WAN fabric extension to access Google Cloud workloads, keeping the control with enterprise IT (Figure 1).

Site to site: Simplify SD-WAN provisioning for optimized site-to-site connectivity using Google's global cloud infrastructure (Figure 1).

Cisco SD-WAN Cloud Hub with Google Cloud allows you to leverage Google Cloud's global infrastructure for both cloud workloads and site-to-site connectivity.

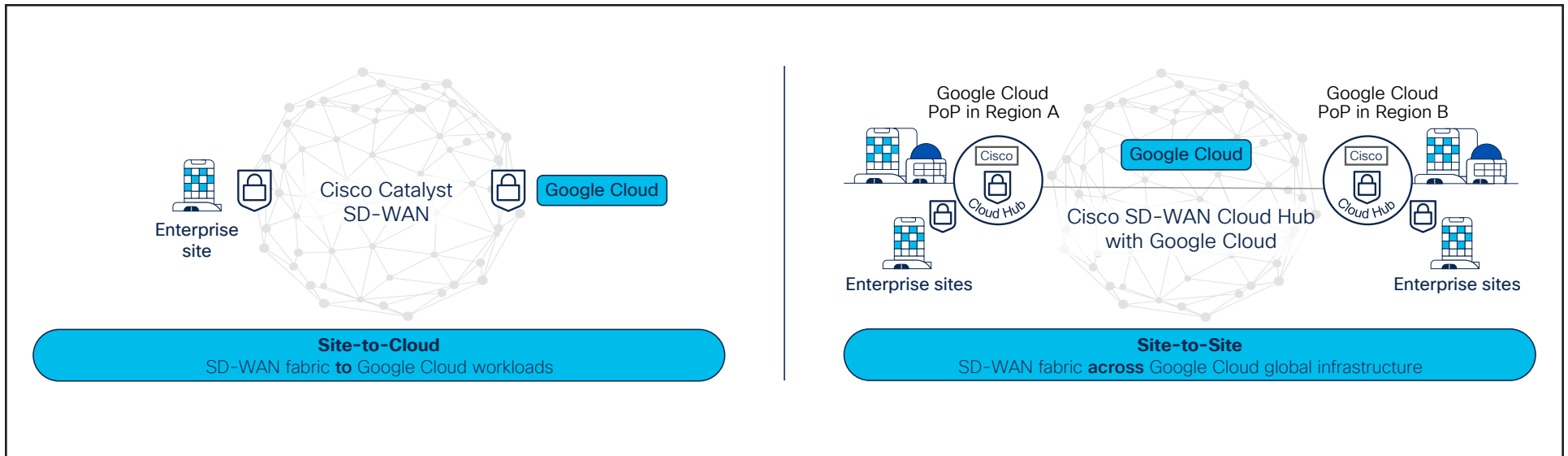


Figure 1. Site-to-cloud and site-to-site connectivity

SD-WAN policy automation - Automate SD-WAN policy for custom applications in multicloud based on application profile with Google Cloud Service Directory (Figure 2).

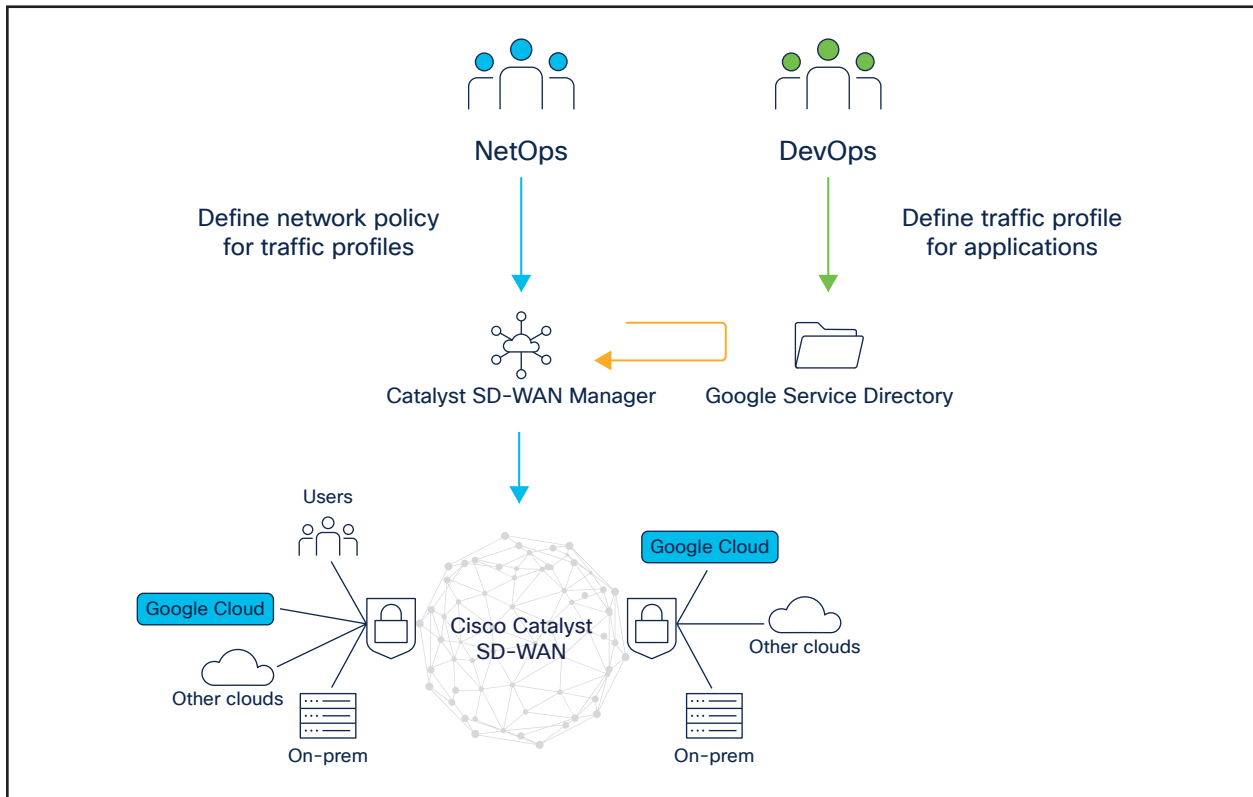


Figure 2. Cisco SD-WAN Cloud Hub with Google Cloud - Service Directory Integration

What's next for Cloud Hub?

Beyond site-to-site, site-to-cloud, and SD-WAN policy automation, Cisco and Google Cloud will continue to partner together on Cisco SD-WAN Cloud Hub with Google Cloud to provide innovation in areas of security, visibility, and customer experience.

¹ July 2020 Cisco internal study of 300,000 support cases

How do you deploy Cisco SD-WAN Cloud Hub with Google Cloud?

This solution can be deployed using the Cisco Cloud OnRamp for Multicloud feature in Cisco Catalyst SD-WAN Manager.

- [Watch the demo.](#)
- [View configuration guides.](#)

Faster support for complex, multicloud issues

Get complex issues in your multicloud environment resolved on average 44 percent faster than product support¹ with [Cisco Solution Support](#) from our engineers who centralize support across your software and hardware from Cisco and other providers.

Learn more

- [Cisco SD-WAN Cloud Hub with Google Cloud FAQ.](#)
- [Cisco SD-WAN Cloud Hub with Google Cloud demo video.](#)
- [Cisco SD-WAN Cloud Hub with Google Cloud webinar.](#)
- [Cisco SD-WAN Cloud OnRamp.](#)
- [Google Cloud Network Connectivity Center.](#)