



wwPDB EM Validation Summary Report ⓘ

Oct 19, 2024 – 07:52 PM EDT

PDB ID : 6DQJ
EMDB ID : EMD-7978
Title : Human type 3 1,4,5-inositol trisphosphate receptor in a ligand-free state
Authors : Hite, R.K.; Paknejad, N.
Deposited on : 2018-06-11
Resolution : 3.49 Å (reported)

This is a wwPDB EM Validation Summary Report for a publicly released PDB entry.

We welcome your comments at validation@mail.wwpdb.org

A user guide is available at

<https://www.wwpdb.org/validation/2017/EMValidationReportHelp>

with specific help available everywhere you see the ⓘ symbol.

The types of validation reports are described at

<http://www.wwpdb.org/validation/2017/FAQs#types>.

The following versions of software and data (see [references ⓘ](#)) were used in the production of this report:

EMDB validation analysis : 0.0.1.dev113
MolProbity : 4.02b-467
Percentile statistics : 20231227.v01 (using entries in the PDB archive December 27th 2023)
MapQ : 1.9.13
Ideal geometry (proteins) : Engh & Huber (2001)
Ideal geometry (DNA, RNA) : Parkinson et al. (1996)
Validation Pipeline (wwPDB-VP) : 2.39

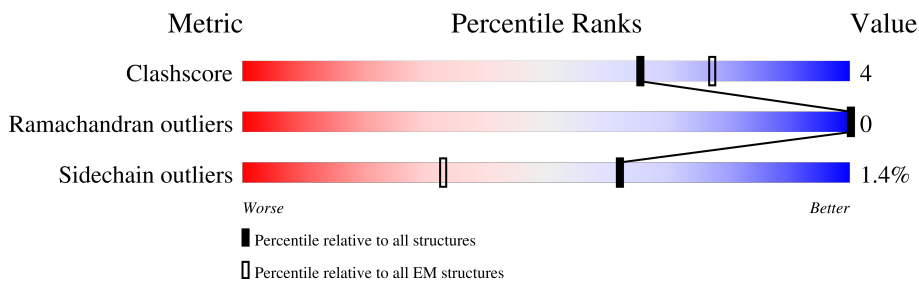
1 Overall quality at a glance

The following experimental techniques were used to determine the structure:

ELECTRON MICROSCOPY

The reported resolution of this entry is 3.49 Å.

Percentile scores (ranging between 0-100) for global validation metrics of the entry are shown in the following graphic. The table shows the number of entries on which the scores are based.



Metric	Whole archive (#Entries)	EM structures (#Entries)
Clashscore	210492	15764
Ramachandran outliers	207382	16835
Sidechain outliers	206894	16415

The table below summarises the geometric issues observed across the polymeric chains and their fit to the map. The red, orange, yellow and green segments of the bar indicate the fraction of residues that contain outliers for ≥ 3 , 2, 1 and 0 types of geometric quality criteria respectively. A grey segment represents the fraction of residues that are not modelled. The numeric value for each fraction is indicated below the corresponding segment, with a dot representing fractions $\leq 5\%$. The upper red bar (where present) indicates the fraction of residues that have poor fit to the EM map (all-atom inclusion $< 40\%$). The numeric value is given above the bar.

Mol	Chain	Length	Quality of chain
1	A	2671	<p>68% (Upper red bar), 73% (Red), 9% (Yellow), 18% (Grey)</p>
1	B	2671	<p>65% (Upper red bar), 72% (Red), 9% (Yellow), 18% (Grey)</p>
1	C	2671	<p>65% (Upper red bar), 72% (Red), 9% (Yellow), 18% (Grey)</p>
1	D	2671	<p>70% (Upper red bar), 73% (Red), 9% (Yellow), 18% (Grey)</p>

2 Entry composition

There are 2 unique types of molecules in this entry. The entry contains 138477 atoms, of which 69265 are hydrogens and 0 are deuteriums.

In the tables below, the AltConf column contains the number of residues with at least one atom in alternate conformation and the Trace column contains the number of residues modelled with at most 2 atoms.

- Molecule 1 is a protein called Inositol 1,4,5-trisphosphate receptor type 3.

Mol	Chain	Residues	Atoms					AltConf	Trace	
			Total	C	H	N	O			S
1	A	2181	34618	11031	17316	2979	3188	104	0	0
1	B	2181	34619	11031	17317	2979	3188	104	0	0
1	C	2181	34618	11031	17316	2979	3188	104	0	0
1	D	2181	34618	11031	17316	2979	3188	104	0	0

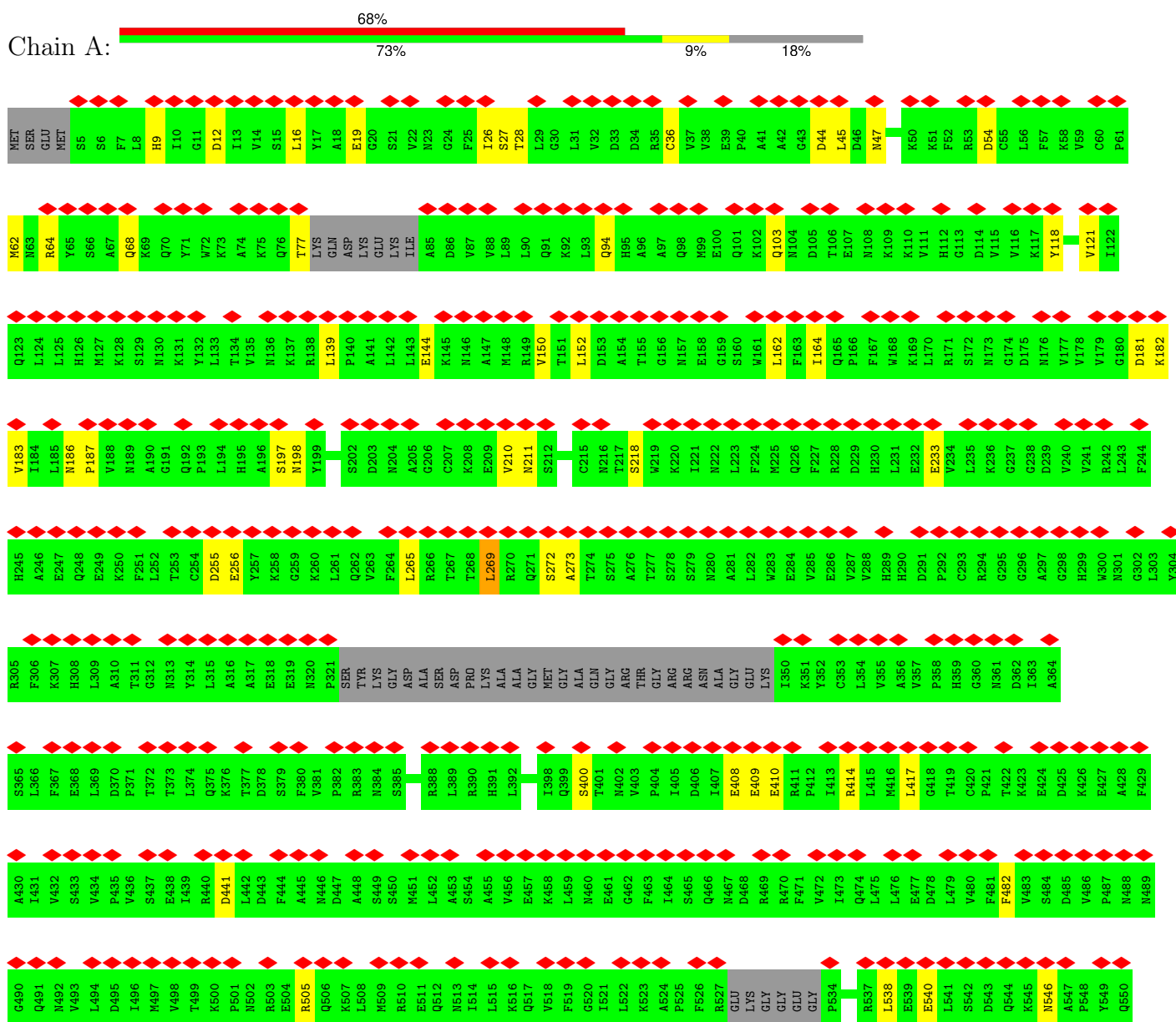
- Molecule 2 is ZINC ION (three-letter code: ZN) (formula: Zn).

Mol	Chain	Residues	Atoms		AltConf
			Total	Zn	
2	A	1	1	1	0
2	B	1	1	1	0
2	C	1	1	1	0
2	D	1	1	1	0

3 Residue-property plots [i](#)

These plots are drawn for all protein, RNA, DNA and oligosaccharide chains in the entry. The first graphic for a chain summarises the proportions of the various outlier classes displayed in the second graphic. The second graphic shows the sequence view annotated by issues in geometry and atom inclusion in map density. Residues are color-coded according to the number of geometric quality criteria for which they contain at least one outlier: green = 0, yellow = 1, orange = 2 and red = 3 or more. A red diamond above a residue indicates a poor fit to the EM map for this residue (all-atom inclusion < 40%). Stretches of 2 or more consecutive residues without any outlier are shown as a green connector. Residues present in the sample, but not in the model, are shown in grey.

• Molecule 1: Inositol 1,4,5-trisphosphate receptor type 3

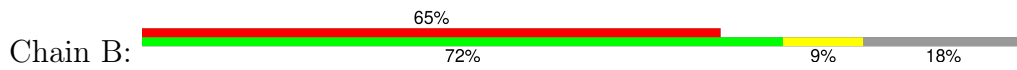


H561	M552	F553	R554	L555	C556	Y557	R558	V559	L560	R561	H562	E565	D566	T567	R568	K569	M570	L571	E572	H573	I574	A575	K576	Q577	F578	G579	M580	M581	Q582	S583	Q584	I585	G586	Y587	D588	I589	L590	A591	E592	D593	T594	L595	T596	A597	L598	L599	H600	M602	R603	K604	L605	L606	E607	K608	H609	I610	T611																																			
K612	V615	T617	F618	V619	S620	L621	V622	R623	M624	N625	R626	E627	P628	R629	F630	L631	D632	Y633	L634	S635	D636	L637	C638	V639	S640	M641	H642	I643	A644	I645	P646	V647	T648	Q649	E650	L651	I652	C653	K654	C655	V656	L657	D658	P659	L660	N661	S662	D663	I664	L665	I666	R667	E668	E669	L670	R671	P672																																			
V673	K674	GLU	MET	ALA	GLN	SER	HIS	GLU	TTR	LEU	SER	ILE	GLU	TTR	SER	GLU	E691	V692	W693	L694	T695	W696	T697	D698	K699	N700	N701	E702	H703	H704	E705	L706	S707	V708	R709	Q710	L711	L712	A713	E714	R715	A717	G718	N719	H721	D722	P723	E724	V725	L726	S727	L728	Y729	R730	Y731	Q732																																				
L733	K734	L735	F736	A737	R738	M739	C740	L741	E642	R743	Q744	Y745	L746	A747	I748	D749	E750	I751	S752	Q753	Q754	L755	G756	V757	D758	L759	H760	H761	L762	C763	M764	A765	D766	E767	M768	L769	P770	D771	L772	L773	A774	A775	S776	F777	H778	L779	L780	M781	L782	H783	S784	H785	V786	D787	R788	D789	P790	Q791	E792																																	
L793	V794	T795	P796	F797	K798	F799	A800	MET	R801	L802	W803	T804	E805	I806	P807	T808	I810	T811	I812	K813	D814	Y815	D816	S817	N818	L819	M820	A821	S822	R823	D824	R825	K826	K827	L828	N829	K829	F830	A831	N832	T833	M834	E835	F836	V837	E838	D839	Y840	L841	N842	H843	Y844	V845	S846	A848	V849	P850	F851	A852																																	
M853	E854	E855	K856	N857	K858	L859	T860	F861	E862	V863	V864	S865	L866	A867	H868	N869	L870	I871	Y872	F873	G874	F875	Y876	S877	F878	S879	E880	L881	L882	R883	L884	R885	R886	T887	L888	L889	G890	I891	I892	CYS	VAL	GLN	GLY	PRO	PRO	ALA	ALA	MET	LEU	GLN	ALA	TTR	GLU	ASP	PRD	GLY	GLY	LYS	ASN																																	
VAL	ARG	ARG	ILE	GLN	GLY	VAL	HIS	MET	SER	THR	THR	MET	VAL	LEU	SER	ARG	GLN	SER	VAL	PHE	SER	ALA	PRO	SER	LEU	ALA	GLY	PRO	L893	L894	L895	L896	L897	Y898	L899	L900	S901	F902	G903	F904	S905	L906	L907	S908	L909	L910	K1111	S1112	E1113	L1114	D1115	R1116	L1117	R1118	T1119	M1120	V1121	E1122	K1123	S1124	E1125	L1126	W1127	V1128	ASP	LYS	GLY	SER	GLY	LYS	GLY	GLU	VAL	GLU	ALA	ALA	LYS	ASP	LYS	GLY	ARG	PRO	THR	M1024	L1025	D1026	R1027	I1028	G1029	E1030	Q1031	A1032
E973	I974	L975	Q976	I978	N980	V981	R982	L983	D984	Y985	R986	I987	Y988	L989	L990	L991	S992	V993	F994	K995	K996	E997	F998	V999	E1000	V1001	F1002	PRO	MET	GLN	ASP	SER	LYS	GLY	PHE	GLU	GLY	ASN	GLU	D961	Y962	V963	Y964	V965	E966	T967	K968	L969	A970	L971	L972																																									
E1033	A1034	M1035	F1036	G1037	VAL	GLY	LYS	THR	SER	S1043	M1044	L1045	E1046	V1047	D1048	D1049	E1050	G1051	G1052	R1053	M1054	F1055	L1056	L1057	V1058	L1059	I1060	H1061	L1062	T1063	M1064	H1065	D1066	Y1067	A1068	P1069	L1070	V1071	S1072	G1073	A1074	L1075	Q1076	L1077	L1078	F1079	K1080	H1081	F1082	S1083	Q1084	R1085	Q1086	E1087	A1088	M1089	H1090	T1091	F1092																																	
K1093	Q1094	V1095	Q1096	L1097	L1098	I1099	S1100	A1101	Q1102	D1103	V1104	E1105	N1106	Y1107	K1108	V1109	I1110	K1111	S1112	E1113	L1114	D1115	R1116	L1117	R1118	T1119	M1120	V1121	E1122	K1123	S1124	E1125	L1126	W1127	V1128	ASP	LYS	GLY	SER	GLY	LYS	GLY	GLU	VAL	GLU	ALA	ALA	LYS	ASP	LYS	GLY	ARG	PRO	THR	M1204	V1205	M1206	L1207	D1208	L1209	L1210	Q1211	I1212																													
ASP	GLU	GLU	PHE	LEU	HIS	PRO	GLU	LYS	SER	S1166	E1167	M1168	Y1169	Q1170	I1171	V1172	K1173	G1174	I1175	L1176	E1177	R1178	L1179	M1180	K1181	M1182	C1183	G1184	M1185	G1186	E1187	Q1188	M1189	R1190	K1191	K1192	Q1193	Q1194	R1195	L1196	L1197	K1198	M1199	M1200	D1201	A1202	H1203	K1204	V1205	M1206	L1207	D1208	L1209	L1210	Q1211	I1212																																				
P1213	Y1214	D1215	K1216	G1217	D1218	A1219	K1220	M1221	M1222	E1223	I1224	L1225	R1226	Y1227	T1228	H1229	Q1230	F1231	L1232	Q1233	K1234	F1235	C1236	A1237	G1238	M1239	P1240	G1241	M1242	Q1243	A1244	L1245	L1246	H1247	K1248	H1249	L1250	H1251	L1252	F1253	L1254	T1255	P1256	G1257	L1258	L1259	E1260	A1261	E1262	T1263	M1264	Q1265	H1266	I1267	F1268	L1269	M1270	M1271	Y1272																																	
Q1273	L1274	C1275	S1276	E1277	I1278	S1279	E1280	P1281	V1282	L1283	K1284	H1285	F1286	V1287	H1288	L1289	L1290	A1291	T1292	H1293	G1294	R1295	H1296	V1297	Q1298	Y1299	L1300	D1301	F1302	L1303	H1304	T1305	V1306	I1307	K1308	A1309	E1310	G1311	K1312	Y1313	V1314	K1315	K1316	C1317	Q1318	D1319	M1320	I1321	M1322	T1323	E1324	L1325	T1326	M1327	A1328	G1329	D1330	L1331	V1332																																	

L2056	L2057	L2058	Q2059	S2060	R2061	R2062	H2063	R2064	R2065	Q2066	L2067	Q2068	H2069	L2070	L2071	R2072	V2073	V2074	LYS	ARG	ILE	GLN	GLU	GLU	GLU	ALA	GLU	GLY	ILE	SER	SER	MET	LEU	LEU	SER	LEU	LEU	ASN	ASN	LYS	GLN	GLN	MET	LYS	SER	ALA	PRO	ALA	GLN	GLU	GLU	E2111	D2112	F2113	L2114	A2115			
A1996	S1997	K1998	L1999	L2000	L2001	A2002	L2003	M2004	E2005	S2006	R2007	H2008	D2009	S2010	E2011	N2012	A2013	E2014	R2015	L2016	L2017	I2018	S2019	L2020	R2021	Q2022	Q2023	E2024	L2025	V2026	D2027	V2028	L2029	K2030	K2031	A2032	Y2033	L2034	Q2035	E2036	E2037	E2038	R2039	E2040	N2041	S2042	E2043	V2044	S2045	P2046	R2047	E2048	V2049	G2050	H2051	N2052	L2053	Y2054	I2055
I1873	L1874	R1875	F1876	L1877	Q1878	L1879	L1880	C1881	E1882	M1883	M1884	M1885	R1886	D1887	L1888	Q1889	M1890	F1891	L1892	C1894	Q1895	M1896	M1897	K1898	T1899	M1900	Y1901	M1902	L1903	V1904	C1905	E1906	T1907	L1908	F1909	F1910	L1911	M1914	C1915	G1916	T1919	G1920	G1921	L1922	G1923	L1924	L1925	G1926	L1927	Y1928	I1929	M1930	E1931	D1932	M1933	V1934			
G1935	L1936	V1937	I1938	Q1939	T1940	L1941	E1942	T1943	L1944	T1945	E1946	Y1947	C1948	Q1949	C1952	H1953	E1954	M1955	Q1956	T1957	C1958	I1959	V1960	T1961	H1962	E1963	S1964	G1966	I1967	D1968	I1969	I1970	T1971	A1972	L1973	L1974	L1975	M1976	D1977	I1978	S1979	P1980	L1981	C1982	K1983	Y1984	L1985	M1986	D1987	L1988	V1989	L1990	Q1991	L1992	K1993	D1994	M1995		
SER	GLN	PRO	HIS	GLU	ASP	ARG	PRO	VAL	ASP	PRO	THR	LYS	GLY	VAL	ALA	SER	PHE	SER	ILE	PRO	GLY	SER	SER	TYR	SER	LEU	PRO	LEU	ARG	GLY	HIS	GLU	VAL	SER	GLU	ARG	VAL	SER	GLU	M1863	G1864	T1865	S1866	V1867	L1868	M1870	Q1871	M1872	ALA	VAL	ASN	MET	ASN	ASP	LEU	GLY			
I1462	Q1463	Q1464	Q1465	H1466	K1467	S1468	S1469	V1470	E1471	E1472	C1473	I1474	I1475	T1476	L1477	M1478	I1479	I1480	V1481	K1482	G1483	R1484	A1489	I1491	L1492	L1493	P1494	M1495	D1496	L1497	D1498	A1499	H1500	I1501	S1502	S1503	M1504	L1505	S1506	G1507	G1508	A1515	S1516	C1517	A1518	A1519	A1520	Q1522	R1523	A1525	S1526	S1527	Y1528	K1529	A1530	T1531			
T1532	R1533	A1541	F1542	P1543	R1544	V1545	T1546	P1547	L1548	A1549	M1550	Q1551	W1552	D1587	Y1588	K1589	M1590	I1591	I1592	E1593	K1594	L1595	Q1596	D1597	I1598	I1599	T1600	A1601	L1602	E1603	E1604	R1605	L1606	K1607	P1608	L1609	V1610	Q1611	A1612	E1613	L1614	S1615	V1616	L1617	V1618	D1619	V1620	L1621	H1622	W1623	P1624	E1625	L1626	L1627	F1628	L1629	E1630	G1631	S1632
E1633	A1634	Y1635	Q1636	M1637	C1638	E1639	S1640	G1641	G1642	F1643	L1644	S1645	K1646	L1647	I1648	Q1649	H1650	T1651	K1652	D1653	M1654	M1655	E1656	S1657	E1658	K1660	L1661	C1662	I1663	K1664	V1665	L1666	R1667	L1668	L1669	Q1670	Q1671	M1672	L1673	L1674	K1675	K1676	T1677	Y1678	G1680	D1681	G1682	M1684	Q1685	L1686	R1687	K1688	F1750	Q1751	E1752				
M1693	Y1694	L1695	Q1696	ASN	ARG	LYS	THR	SER	ARG	GLY	ASP	LEU	PRO	ASP	PRO	ILE	GLY	THR	GLY	LEU	ASP	PRO	D1717	W1718	S1719	A1720	I1721	A1722	A1723	T1724	Q1725	C1726	R1727	L1728	F1729	K1730	E1731	G1732	A1733	T1734	K1735	L1736	V1737	C1738	D1739	L1740	I1741	T1742	S1743	T1744	K1745	M1746	K1748	I1749	F1750	Q1751	E1752		
S1753	I1754	G1755	L1756	A1757	I1758	H1759	L1760	L1761	D1762	G1763	G1764	M1765	T1766	E1767	I1768	I1769	Q1769	K1770	S1771	F1772	H1773	M1774	M1775	M1776	M1777	S1778	D1779	K1780	I1781	S1782	E1783	R1784	L1785	F1786	K1787	V1788	I1789	H1790	D1791	R1792	M1793	K1794	R1795	A1796	Q1797	Q1798	E1799	T1800	K1801	S1802	T1803	V1804	VAL	ASN	MET	ASN	ASP	LEU	GLY
SER	GLN	PRO	HIS	GLU	ASP	ARG	PRO	VAL	ASP	PRO	THR	LYS	GLY	VAL	ALA	SER	PHE	SER	ILE	PRO	GLY	SER	SER	TYR	SER	LEU	PRO	LEU	SER	ARG	GLY	HIS	GLU	VAL	SER	GLU	ARG	VAL	GLN	SER	SER	GLU	M1863	G1864	T1865	S1866	V1867	L1868	M1870	Q1871	M1872	ALA	VAL	ASN	MET	ASN	ASP	LEU	GLY

V2116	V2117	E2118	H2119	H2120	H2121	S2122	Q2123	E2124	E2125	I2126	V2127	R2128	Q2129	D2130	R2131	S2132	H2133	E2134	Q2135	I2136	V2137	F2138	P2139	V2140	F2141	G2142	I2143	C2144	Q2145	F2146	L2147	T2148	E2149	E2150	T2151	K2152	H2153	R2154	L2155	F2156	T2157	T2158	T2159	E2160	Q2161	D2162	E2163	Q2164	G2165	S2166	K2167	GLY	ALA	SER	THR	GLY	VAL	F2172	D2173	Q2174	S2175				
S2176	F2177	L2178	H2179	E2181	M2182	E2183	W2184	Q2185	R2186	K2187	L2188	S2189	M2191	P2192	L2193	I2194	Y2195	W2196	F2197	S2198	R2199	R2200	M2201	T2202	L2203	W2204	I2207	S2208	F2209	N2210	L2211	A2212	F2213	I2215	N2216	I2217	I2218	I2219	A2220	F2221	F2222	Y2223	P2224	Y2225	M2226	GLY	ALA	SER	THR	GLY	VAL	LEU	ASP	SER											
PRO	L2231	I2232	S2233	L2234	L2235	F2236	W2237	I2238	L2239	I2240	C2241	F2242	S2243	I2244	A2245	A2246	L2247	F2248	T2249	K2250	R2251	Y2252	S2253	I2254	I2255	V2256	A2257	L2258	L2259	L2260	L2261	V2262	A2263	L2264	V2265	V2266	A2267	L2268	L2269	L2270	R2271	L2272	S2273	Y2274	Y2275	I2276	G2277	L2278	G2279	P2280	T2281	L2282	M2283	L2284	L2285	G2286	A2287	L2288	N2289	L2290	T2291	N2292	K2293	L2294	F2295
V2297	V2298	S2299	F2300	G2301	G2302	M2303	R2304	G2305	T2306	F2307	L2308	G2309	Q2310	Y2311	K2312	A2313	L2314	V2315	M2316	D2317	M2318	E2319	F2320	L2321	Y2322	H2323	V2324	G2325	Y2326	L2327	L2328	T2329	S2330	V2331	L2332	G2333	L2334	F2335	A2336	H2337	E2338	L2339	F2340	Y2341	S2342	I2343	L2344	L2345	L2346	D2347	L2348	I2349	Y2350	R2351	E2352	E2353	T2354	L2355	F2356						
M2357	V2358	I2359	K2360	S2361	V2362	T2363	R2364	N2365	G2366	R2367	S2368	I2369	L2370	L2371	T2372	A2373	M2374	L2375	A2376	L2377	L2378	L2379	V2380	Y2381	L2382	F2383	S2384	I2385	V2386	G2387	L2388	F2389	L2391	K2392	D2393	D2394	F2395	I2396	L2397	E2398	V2399	D2400	R2401	L2402	P2403	ASN	ASN	HIS	SER	THR	ALA	ALA	SER	PRO	LEU	GLY	PRO	MET	HIS						
GLY	ALA	ALA	ALA	PHE	VAL	ASP	THR	CYS	SER	GLY	ASP	LYS	ASP	MET	ASP	CYS	VAL	SER	VAL	GLY	LEU	SER	PRO	GLU	VAL	LEU	D2449	S2450	T2451	E2452	R2453	A2454	C2455	D2456	T2457	L2458	L2459	M2460	C2461	I2462	V2463	T2464	V2465	M2466	N2467	H2468	G2469	L2470	R2471	L2472	G2473	G2474	G2475	W2476											
G2477	D2478	I2479	L2480	R2481	K2482	P2483	S2484	K2485	D2486	E2487	L2488	L2489	F2490	P2491	A2492	R2493	V2494	V2495	Y2496	D2497	L2498	L2499	F2500	F2501	F2502	I2503	V2504	I2505	V2506	L2507	L2508	L2509	M2510	L2511	L2512	F2513	G2514	L2515	I2516	L2517	D2518	T2519	F2520	A2521	D2522	L2523	R2524	S2525	E2526	K2527	Q2528	K2529	K2530	E2531	E2532	I2533	L2534	L2535	T2536	T2537					
G2538	F2539	L2540	C2541	G2542	L2543	E2544	R2545	D2546	K2547	F2548	D2549	M2550	K2551	T2552	V2553	S2554	F2555	E2556	E2557	H2558	L2559	K2560	L2561	E2562	M2565	W2566	M2567	Y2568	L2569	V2570	F2571	L2572	V2573	L2574	V2575	R2576	V2577	K2578	M2579	K2580	T2581	D2582	Y2583	T2584	G2585	P2586	E2587	S2588	Y2589	V2590	A2591	Q2592	M2593	L2594	K2595	M2596	K2597	N2598							
L2599	D2600	W2601	M2605	R2606	A2607	M2608	S2609	L2610	V2611	SER	ASN	GLN	GLY	GLY	GLY	GLU	GLN	GLN	ASN	ASN	ILE	ARG	ARG	ILE	ILE	GLN	LEU	GLN	ASP	ASP	LYS	LEU	ASN	ASN	SER	THR	MET	THR	THR	GLN	GLN	ARG	ARG	ARG	GLN	ARG	LEU																		
GLY	PHE	VAL	ASP	VAL	VAL	GLN	ASN	ASN	CYS	ILE	SER	ARG																																																					

Molecule 1: Inositol 1,4,5-trisphosphate receptor type 3

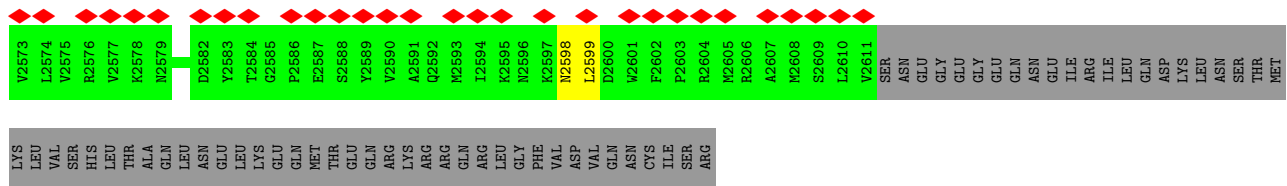


MET	SER	GLU	MET	S5	S6	F7	L8	H9	I10	G11	D12	I13	L16	Y17	A18	E19	V22	M23	G24	F25	L26	S27	T28	L31	D34	R35	C36	V37	V38	E39	P40	A41	A42	G43	D44	L45	D46	M47	P48	P49	K50	K51	F52	R53	D54	V55	L56	F57	K58	V59	C60	P61	M62	N63	R64				
765	866	867	868	869	870	871	872	873	874	875	876	877	878	879	880	881	882	883	884	885	886	887	888	889	890	891	892	893	894	895	896	897	898	899	900	901	902	903	904	905	906	907	908	909	910	911	912	913	914	915	916	917	918	919	920	921	922	923	924

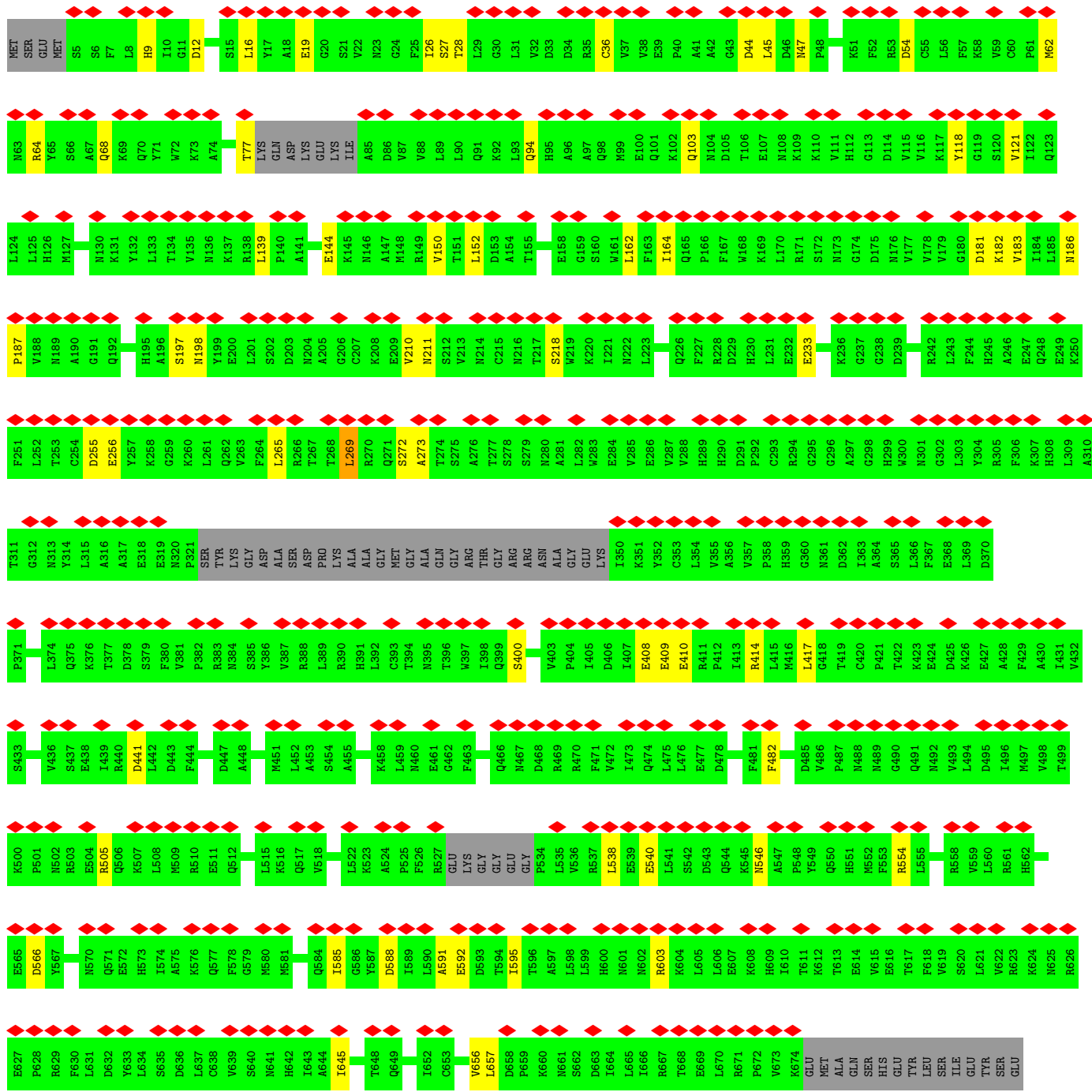
L125	L126	M127	K128	S129	M130	K131	Y132	L133	T134	V135	M136	K137	L138	R139	F140	A141	L142	L143	E144	K145	M148	R149	V150	T151	L152	A154	T155	G156	M157	E158	G159	S160	M161	L162	F163	I164	Q165	M168	K169	L170	R171	S172	M173	D175	M176	V177	L178	H245	A246	E247	D181	K182	V183	I184	L185	M186					
G191	L194	H195	A196	S197	M198	Y199	E200	G201	S202	D203	M204	A205	G206	L209	R270	Q271	S272	K207	E209	V210	N211	S212	V213	N214	C215	S218	V219	K220	I221	N222	L223	F224	P292	E158	G159	S160	Q226	F227	R228	D229	H230	L231	E232	E233	V234	L235	D239	V240	V241	R242	L243	F244	H245	A246	E247	D181	K182	V183	I184	L185	M186
D255	E256	Y257	K258	G259	K260	L261	Q262	L265	R266	T267	T268	L269	R270	Q271	S272	K207	E209	V210	N211	A281	L282	V283	E284	V287	V288	H289	N290	N292	L293	D291	P292	C293	R294	A297	G298	H299	W300	N301	G302	L303	Y304	R305	H308	L309	G312	N313	Y314	L315	A316	A317	E318	E319	N320	P321	SER	TYR					
LYS	GLY	ALA	SER	ASP	PRO	LYS	ALA	ALA	GLY	MET	GLY	ALA	GLN	GLY	THR	GLY	ARG	ASN	ALA	GLY	GLU	LYS	I350	K351	Y352	C353	V355	A356	V357	P358	H359	G360	N361	D362	I363	A364	S365	F367	E368	D370	P371	T372	T373	L374	Q375	K376	T377	D378	S379	F380	V381	P382	E383	N320	P321	SER	TYR				
M384	S385	Y386	V387	R390	H391	L392	N395	T396	W397	I398	Q399	S400	T401	M402	D406	I407	E408	E409	E410	M411	P412	I413	R414	L415	M416	M417	G418	T419	C420	P421	T422	K423	E424	D425	K426	E427	A428	F429	A430	I431	S433	V434	P435	V436	S437	E438	I439	R440	D441	L442	D443	F444	A445	M446	D447						
A448	S449	S450	M451	L452	A453	S454	A455	V456	E457	M460	E461	F463	I464	S465	Q466	D468	R469	R470	F471	V472	I473	Q474	L475	L476	E477	D478	L479	V480	F481	F482	S484	D485	V486	P487	M488	N489	G490	Q491	M492	V493	L494	D495	I496	M497	V498	T499	K500	P501	N502	R503	E504	R505	Q506	K507	L508						
M509	R510	E511	Q512	M513	L514	L515	L522	K523	F526	R527	GLU	LYS	GLY	GLY	GLU	GLY	P534	L535	V536	R537	L538	E539	E540	L541	S542	D543	O544	K545	N546	A547	Q550	H551	M552	F553	R554	L555	C556	Y557	R558	R561	H562	S563	O564	E565	D566	Y567	R568	K569	R570	Q571	E572	H573	L574	A575	K576						
Q577	F578	G579	M580	M581	O582	S583	Q584	I585	G586	Y587	D588	I589	A591	E592	D593	T594	T596	A597	L598	L599	H600	M601	N602	R603	K604	L605	L606	E607	H608	H609	L610	T611	K612	E614	V615	E616	T617	F618	M619	S620	L621	M622	R623	R626	E627	P628	R629	F630	L631	D632	G633	L634	S635	D636	L637						
C638	V639	S640	M641	H642	L643	A644	I645	F646	V647	T648	Q649	E650	L651	I652	C653	K654	C655	V656	L657	D658	P659	K660	N661	S662	L664	L665	L666	R667	T668	E669	L670	P672	V673	K674	GLU	MET	ALA	GLN	SER	HIS	GLY	TYR	L621	L622	R623	R626	E627	P628	R629	F630	L631	D632	G633	L634	S635	D636	L637				
D698	K699	M700	M701	E702	H703	H704	E705	K706	S707	V708	R709	Q710	L711	A712	Q713	E714	A715	R716	G718	M719	A720	H721	D722	E723	M724	V725	L726	Y727	Y728	Y729	R730	R731	Q732	L733	K734	T735	F736	A737	R738	M739	C740	L741	D742	R743	Q744	V745	L746	A747	P807	T808	D749	E750	L751	S752	Q753	Q754	L755	G756	V757		
D758	L759	I760	F761	L762	C763	M764	A765	D766	E767	M768	L769	P770	F771	D772	L773	R774	A775	S776	F777	C778	H779	L780	M781	L782	H783	V784	H785	V786	D787	R788	D789	P790	F791	A852	M853	E854	E855	K856	M857	K858	L859	T860	F861	E862	L863	V864	T864	E805	L806	P807	T808	L870	L871	I810	K813	D814	Y815	D816	S817	M818	
L819	M820	A821	S822	R823	D824	D825	K826	K827	M828	K829	F830	A831	M832	T833	M834	E835	F836	V837	E838	D839	Y840	L841	M842	M843	V844	V845	E846	E847	A848	V849	P850	F851	A852	M853	E854	E855	K856	M857	K858	L859	T860	F861	E862	L863	V864	A867	H868	M869	L870	L871	I810	K813	D814	Y815	D816	S817	M818				
E880	L881	L882	R883	L884	T885	R886	L889	G890	I891	L892	D893	CYS	VAL	GLN	GLY	L773	R774	A775	S776	F777	C778	H779	L780	M781	L782	H783	V784	H785	V786	D787	R788	D789	P790	F791	A852	M853	E854	E855	K856	M857	K858	L859	T860	F861	E862	L863	V864	A867	H868	M869	L870	L871	I810	K813	D814	Y815	D816	S817	M818		
D961	I962	V963	M964	M965	E966	T967	K968	L969	K970	I971	L972	E973	I974	L975	Q976	F977	I978	L979	N980	V981	R982	L983	D984	Y985	I987	R988	Y989	L990	L991	S992	V993	F994	K995	K996	E997	F998	V999	E1000																							

V1001	F1002	PRO	MET	GLN	ASP	SER	GLY	ALA	ASP	GLY	THR	THR	ALA	ASN	MET	M1024	L1025	D1026	L1027	I1028	G1029	E1030	Q1031	E1032	E1033	M1034	M1035	F1036	G1037	VAL	GLY	LYS	THR	SER	S1043	M1044	L1045	E1046	V1047	D1048	D1049	E1050	G1051	G1052	R1053	M1054	F1055	L1056	V1057	L1058	L1059	H1060											
H1061	T1063	M1064	H1065	Y1067	A1068	P1069	L1070	V1071	S1072	G1073	PHE	ASP	SER	THR	THR	ALA	ASN	M1024	L1025	D1026	L1027	I1028	G1029	E1030	Q1031	E1032	E1033	M1034	M1035	F1036	G1037	VAL	GLY	LYS	THR	SER	S1043	M1044	L1045	E1046	V1047	D1048	D1049	E1050	G1051	G1052	R1053	M1054	F1055	L1056	V1057	L1058	L1059	H1060									
V1121	E1122	K1123	S1124	E1125	L1126	W1127	ASP	LYS	LYS	GLY	SER	GLY	ALA	VAL	VAL	GLU	GLU	ALA	ALA	ALA	LYS	ASP	LYS	LYS	LYS	LYS	LYS	LYS	LYS	LYS	PHE	LEU	HIS	PRO	PRO	GLY	LYS	THR	LYS	SER	S1166	E1167	M1168	Y1169	M1170	G1171	G1172	I1173	E1174	E1175	L1176	E1177	R1178	L1179	M1180								
K1181	M1182	C1183	G1184	V1185	G1186	E1187	Q1188	M1189	R1190	K1191	K1192	L1193	Q1194	R1195	L1196	L1197	K1198	M1199	M1200	A1201	A1202	H1203	K1204	V1205	M1206	L1207	D1208	L1209	L1210	Q1211	I1212	P1213	I1214	D1215	K1216	E1217	G1217	D1218	A1219	K1220	M1221	M1222	M1223	I1224	L1225	R1226	Y1227	L1228	H1229	Q1230	F1231	L1232	Q1233	K1234	C1235	G1236	A1237	G1238	M1239	P1240			
G1241	N1242	Q1243	A1244	L1245	L1246	H1247	K1248	H1249	L1250	H1251	L1252	F1253	L1254	T1255	P1256	G1257	L1258	L1259	E1260	A1261	E1262	T1263	M1264	Q1265	H1266	I1267	F1268	L1269	M1270	N1271	Y1272	Q1273	L1274	C1275	S1276	E1277	I1278	S1279	E1280	P1281	V1282	M1283	Q1284	H1285	F1286	V1287	L1288	L1289	L1290	A1291	T1292	H1293	G1294	R1295	H1296	V1297	Q1298	L1299	L1300				
D1301	F1302	L1303	H1304	T1305	V1306	I1307	K1308	A1309	E1310	G1311	K1312	Y1313	V1314	K1315	K1316	C1317	Q1318	D1319	M1320	I1321	M1322	T1323	E1324	L1325	T1326	M1327	A1328	G1329	D1330	D1331	V1332	V1333	V1334	V1335	Y1336	M1337	D1338	K1339	A1340	S1341	L1342	A1343	H1344	L1345	L1346	D1347	M1348	M1349	K1350	A1351	A1352	R1353	D1354	G1355	V1356	L1357	D1358	H1359	S1360				
P1361	L1362	M1363	H1364	H1365	I1366	S1367	L1368	V1369	D1370	L1371	L1372	A1373	A1374	C1375	K1376	E1377	G1378	K1379	M1380	V1381	Y1382	T1383	E1384	I1385	K1386	C1387	T1388	S1389	L1390	L1391	P1392	L1393	E1394	D1395	V1396	V1397	S1398	V1399	A1400	T1401	H1402	E1403	D1404	C1405	I1406	T1407	E1408	V1409	K1410	M1411	A1412	Y1413	V1414	M1415	F1416	V1417	M1418	H1419	C1420				
Y1421	V1422	D1423	THR	VAL	GLU	MET	LYS	GLU	ILE	TYR	THR	SER	ASN	HIS	ILE	TRP	THR	LEU	PHE	GLU	ASN	PHE	THR	THR	THR	THR	ARG	ARG	GLU	LYS	ARG	VAL	A1434	D1435	P1436	T1437	L1438	E1439	K1440	Y1441	V1442	L1443	S1444	V1445	V1446	L1447	D1448	T1449	I1450	M1451	A1452	F1453	F1454										
SER	SER	PRO	PHE	SER	GLU	ASN	SER	SER	GLN	THR	HIS	GLN	THR	ILE	VAL	VAL	GLN	LEU	LEU	GLN	SER	THR	THR	THR	ARG	ARG	LEU	GLU	GLY	CYS	PRO	L1462	Q1463	Q1464	Q1465	H1466	K1467	G1468	S1469	V1470	E1471	A1472	C1473	I1474	R1475	T1476	L1477	A1478	M1479	V1480	A1481	K1482	G1483	L1484	A1489	I1491	L1492	L1493					
P1494	M1495	D1496	L1497	R1498	A1499	H1500	I1501	S1502	V1503	M1504	L1505	S1506	S1507	G1508	A1515	C1516	C1517	A1518	A1519	A1520	A1521	Q1522	R1523	M1524	A1525	S1526	S1527	V1528	K1529	A1530	T1531	L1532	R1533	A1541	F1542	P1543	T1543	L1543	K1544	Y1544	V1544	R1545	T1546	P1547	T1548	A1549	M1550	Q1551	M1552	D1587	Y1588	K1589	M1590	I1591	I1592	E1593	K1594	L1595	Q1596	D1597	I1598	I1599	T1600
A1601	L1602	E1603	E1604	R1605	L1606	K1607	P1608	L1609	V1610	Q1611	A1612	E1613	L1614	S1615	V1616	L1617	V1618	V1619	V1620	L1621	H1622	V1623	P1624	E1625	L1626	L1627	F1628	L1629	E1630	G1631	E1632	E1633	A1634	Y1635	Q1636	R1637	C1638	E1639	S1640	G1641	G1642	F1643	L1644	S1645	K1646	L1647	I1648	T1651	K1652	D1653	L1654	M1655	E1656	S1657	E1658	E1659	K1660	L1661					
C1662	I1663	K1664	V1665	L1666	R1667	T1668	L1669	Q1670	Q1671	M1672	L1673	L1674	K1675	K1676	T1677	K1678	Y1679	G1680	D1681	R1682	G1683	M1684	Q1685	L1686	R1687	K1688	M1689	L1690	L1691	Q1692	M1693	Y1694	L1695	ASN	ARG	LYS	SER	THR	ARG	SER	ARG	GLY	ASP	LEU	PRO	PRO	PRO	ILE	GLY	THR	GLY	LEU	ASP	PRO	D1717	W1718	S1719	A1720	I1721				
A1722	A1723	T1724	Q1725	C1726	R1727	L1728	D1729	K1730	E1731	G1732	A1733	T1734	K1735	L1736	V1737	C1738	D1739	L1740	I1741	T1744	K1745	M1746	E1747	K1748	I1749	F1750	Q1751	E1752	S1753	I1754	G1755	L1756	A1757	I1758	H1759	L1760	L1761	D1762	G1763	G1764	M1765	T1766	E1767	I1768	Q1769	K1770	S1771	F1772	M1773	N1774	L1775	M1776	M1777	S1778	D1779	K1780	K1781	S1782					

E1783	R1784	F1785	F1786	K1787	V1788	L1789	H1790	D1791	H1792	M1793	K1794	R1795	A1796	Q1797	Q1798	E1799	T1800	K1801	S1802	T1803	A1804	ALA	VAL	ASN	ASN	MET	ASN	ASN	ASP	LEU	GLY	GLN	PRO	PRO	HIS	GLU	ASP	ARG	ARG	GLU	VAL	PRO	VAL	ASP	PRO	THR	THR	LYS	GLY	ARG	VAL	ALA	SER	PHE	SER	ILE	PRO	GLY	SER	SER	SER	ARG	ARG	TYR						
SER	LEU	GLY	PRO	SER	LEU	ARG	GLY	HIS	GLU	VAL	SER	GLU	ARG	VAL	GLN	SER	SER	GLU	M1863	G1864	T1865	V1867	I1868	M1870	Q1871	P1872	I1873	L1874	R1875	Q1878	L1879	L1880	E1882	N1883	H1884	N1885	R1886	D1887	L1888	Q1889	N1890	F1891	L1892	R1893	L1894	Q1895	N1896	N1897	K1898	T1899	N1900	L1903	V1904																	
C1905	E1906	T1907	L1908	Q1909	F1910	L1911	D1912	I1913	M1914	L1915	G1916	S1917	T1918	T1919	G1920	G1921	L1922	G1923	L1924	L1925	G1926	L1927	Y1928	I1929	M1930	Q1931	D1932	M1933	V1934	L1935	V1936	V1937	I1938	L1941	E1942	T1943	L1944	L1945	E1946	C1947	C1948	Q1949	G1950	P1951	C1952	H1953	E1954	R2005	H2006	D2009	G1950	P1951	C1952	H1953	E2013	E2014	R2015	L2016	L2017	L2018	L2019	S2019	L2020	R2021	T1961	H1962	Q2023	E2024	S1964	N1965
G1966	I1967	D1968	I1969	I1970	T1971	A1972	L1973	I1974	L1975	M1976	D1977	I1978	S1979	P1980	L1981	C1982	K1983	Y1984	R1985	M1986	D1987	L1988	Y1989	L1990	Q1991	L1992	K1993	L1994	D1995	L1996	L1997	L1998	L2000	L2001	A2002	L2003	M2004	S2006	R2007	H2008	D2009	G1950	P1951	C1952	H1953	E2013	E2014	R2015	L2016	L2017	L2018	L2019	S2019	L2020	R2021	T1961	H1962	Q2023	E2024	S1964	N1965									
D2027	V2028	I2029	K2030	K2031	A2032	Y2033	L2034	Q2035	E2036	E2037	E2038	R2039	E2040	N2041	S2042	E2043	V2044	S2045	P2046	R2047	E2048	V2049	G2050	H2051	M2052	I2053	Y2054	I2055	L2056	A2057	Q2058	S2061	R2062	H2063	N2064	K2065	L2066	L2067	Q2068	H2069	L2070	L2071	K2072	P2073	V2074	ARG	LYS	ILE	GLN	GLU	GLU	ALA	GLU	GLY	SER															
SER	MET	LEU	SER	LEU	ASN	ASN	LYS	GLN	LEU	SER	GLN	MET	LEU	LYS	SER	ALA	PRO	ALA	GLN	GLU	GLU	E2111	D2112	P2113	L2114	A2115	Y2116	Y2117	E2118	N2119	H2120	T2121	S2122	L2123	T2124	E2125	R2128	Q2129	R2130	R2131	S2132	M2133	E2134	Q2135	L2136	V2137	F2138	P2139	V2140	P2141	S2142	G2143	C2144	Q2145	F2146	L2147														
T2148	E2149	E2150	L2151	K2152	H2153	R2154	L2155	F2156	T2157	T2158	T2159	E2160	Q2161	D2162	E2163	Q2164	G2165	S2166	K2167	V2168	S2169	D2170	F2171	F2172	A2173	Q2174	F2177	L2178	H2179	N2180	E2181	M2182	E2183	W2184	Q2185	R2186	K2187	L2188	R2189	S2190	M2191	P2192	L2193	I2194	Y2195	W2196	F2197	S2198	R2199	R2200	M2201	T2202	L2203	L2204	G2205	A2267	L2268	S2208												
F2209	N2210	L2211	A2212	V2213	F2214	L2215	M2216	L2217	L2218	L2219	A2220	F2221	F2222	Y2223	P2224	Y2225	M2226	GLU	ALA	SER	THR	GLY	VAL	LEU	ASP	SER	PRO	L2231	L2232	S2233	L2234	L2235	F2236	W2237	L2238	L2239	L2240	C2241	F2242	S2243	A2244	A2245	A2246	L2247	F2248	T2249	K2250	R2251	Y2252	S2260	L2261	R2262	P2263	L2264	L2265	V2266	A2267	L2268												
I2269	L2270	R2271	S2272	L2273	Y2274	Y2275	L2276	G2277	L2278	G2279	F2280	T2281	L2282	N2283	L2284	L2285	G2286	A2287	L2288	N2289	L2290	T2291	N2292	K2293	L2294	V2295	F2296	V2297	V2298	S2299	F3300	V2301	G2302	N2303	R2304	G2305	T2306	F2307	L2308	R2309	G2310	Y2311	L2312	A2313	M2314	V2315	D2316	M2317	M2318	E2319	F2320	L2321	F2322	H2323	Y2326	L2327	L2328	T2329												
S2330	V2331	L2332	G2333	L2334	F2335	A2336	H2337	E2338	L2339	F2340	Y2341	S2342	I2343	L2344	L2345	F2346	D2347	L2348	I2349	Y2350	R2351	E2352	E2353	T2354	L2355	R2356	M2357	V2358	I2359	K2360	S2361	V2362	L2363	R2364	N2365	G2366	R2367	S2368	I2369	L2370	L2371	T2372	A2373	L2374	L2375	L2376	A2376	L2377	L2378	L2379	V2380	Y2381	L2382	F2383	S2384	I2385	V2386	G2387	F2388	L2389										
F2390	L2391	K2392	D2393	D2394	F2395	L2396	L2397	E2398	V2399	D2400	R2401	L2402	P2403	ASN	ASN	HIS	SER	THR	ALA	PRO	PRO	GLY	MET	PRO	HIS	GLY	ALA	ALA	PHE	VAL	ASP	THR	CYS	SER	GLY	ASP	LYS	MET	ASP	CYS	VAL	GLY	LEU	SER	VAL	PRO	GLU	VAL	LEU	GLU	ASP	ARG	GLU	LEU	D2449															
S2450	R2453	A2454	C2455	D2456	T2457	L2458	L2459	M2460	C2461	I2462	V2463	T2464	V2465	M2466	N2467	H2468	G2469	L2470	R2471	N2472	G2473	G2474	G2475	V2476	G2477	D2478	I2479	L2480	R2481	K2482	P2483	S2484	K2485	D2486	E2487	S2488	L2489	F2490	P2491	A2492	R2493	V2494	V2495	Y2496	D2497	L2498	L2499	F2500	F2501	F2502	L2503	V2504	L2505	L2506	L2509	N2510	L2511													
I2512	F2513	G2514	V2515	L2516	L2517	D2518	F2519	F2520	A2521	D2522	L2523	R2524	S2525	E2526	K2527	O2528	K2529	G2530	E2531	E2532	L2533	L2534	K2535	T2536	T2537	C2538	F2539	I2540	C2541	G2542	L2543	E2544	R2545	D2546	K2547	F2548	D2549	N2550	K2551	T2552	V2553	F2554	E2555	E2556	E2557	E2558	L2559	K2560	L2561	E2562	H2563	N2564	M2565	W2566	N2567	Y2568	L2569	T2572												



• Molecule 1: Inositol 1,4,5-trisphosphate receptor type 3



GLU	E691	E692	E693	E694	E695	D698	K699	N700	N701	E702	H703	H704	E705	K706	S707	V708	R709	Q710	L711	A712	Q713	E714	A715	R716	A717	G718	N719	A720	H721	D722	E723	N724	V725	L726	S727	Y728	Y729	R730	Y731	Q732	Q733	K734	L735	F736	R738	L741	D742	R743	Q744	Y745	L746	A747	I748	D749	E750	I751					
S752	Q753	Q754	L755	G756	D758	L759	I760	F761	L762	C763	M764	A765	D766	E767	M768	L769	P770	F771	T773	R774	A775	C778	H779	L780	M781	L782	H783	V784	H785	V786	D787	R788	D789	P790	Q791	E792	L793	V794	T795	P796	Q797	K798	F799	A800	R801	L802	V803	T804	E805	I806	P807	T808	A809	I810	T811	I812					
K814	D814	Y815	D816	S817	N818	L819	N820	A821	S822	R823	D824	D825	K826	K827	N828	K829	F830	A831	N832	T833	M834	E835	F836	V837	E838	D839	Y840	L841	N842	N843	V844	V845	S846	E847	A848	V849	F851	A852	N853	E854	E855	K856	N857	T860	F861	E862	V863	V864	S865	L866	A867	H868	I871	Y872	F873						
Y876	S877	F878	S879	E880	L881	L882	R883	L884	T885	R886	T887	L888	L889	G890	I891	I892	D893	CYS	VAL	GLN	GLY	PRO	ALA	MET	GLN	ALA	TVR	GLU	ASP	PRO	GLY	LYS	ASN	VAL	ARG	ARG	SER	ILE	GLY	VAL	GLY	HIS	MET	MET	SER	THR	MET	VAL	LEU	SER	ARG	GLN	SER	VAL							
PHE	SER	ALA	PRO	SER	LEU	SER	ALA	ALA	ALA	GLU	PRO	LEU	ARG	ARG	SER	LYS	PHE	GLU	ALA	ASN	GLU	D961	I962	V963	V964	H965	K968	L969	K970	I971	L972	L975	Q976	F977	I978	L979	N980	L983	D984	Y985	R986	I987	S988	Y989	L990	V993	F994	K995	K996	E997	F998	V999									
E1000	V1001	F1002	PRO	MET	GLN	ASP	SER	GLY	ALA	ALA	ASP	THR	ALA	PRO	PHE	ASP	SER	THR	THR	ALA	MET	N1024	L1025	D1026	R1027	I1028	E1029	E1030	E1033	A1034	M1035	F1036	G1037	VAL	GLY	GLY	THR	SER	S1043	M1044	L1045	E1046	V1047	D1048	D1049	E1050	G1051	G1052	R1053	M1054	F1055	L1056	R1057	V1058	L1059	I1060					
H1061	L1062	T1063	M1064	H1065	D1066	Y1067	A1068	L1070	V1071	S1072	GLY	GLY	GLY	SER	GLY	L1075	Q1076	L1077	L1078	F1079	K1080	H1081	F1082	S1083	Q1084	L1085	Q1086	E1087	A1088	M1089	H1090	T1091	F1092	K1093	Q1094	Q1095	Q1096	Q1097	L1098	I1099	S1100	A1101	Q1102	D1103	V1104	E1105	M1106	Y1107	K1108	V1109	I1110	K1111	S1112	E1113	L1114	D1115	L1116	R1117	R1118	T1119	M1120
V1121	E1122	K1123	S1124	L1125	L1126	W1127	ASP	LYS	LYS	GLY	GLY	SER	GLY	GLY	GLY	GLY	GLU	VAL	VAL	ALA	ALA	LYS	ASP	LYS	LYS	GLU	ARG	PRO	THR	ASP	GLU	GLU	PHE	HIS	PRO	PRO	PRO	GLY	GLY	LYS	S1166	E1167	N1168	Y1169	Q1170	I1171	V1172	K1173	G1174	I1175	L1176	E1177	R1178	L1179	L1180	M1180					
K1181	M1182	C1183	G1184	V1185	G1186	E1187	Q1188	M1189	R1190	K1191	K1192	Q1193	Q1194	R1195	L1196	L1197	K1198	M1199	M1200	D1201	A1202	H1203	K1204	V1205	M1206	L1207	D1208	L1209	L1210	Q1211	I1212	P1213	Y1214	D1215	K1216	G1217	D1218	A1219	K1220	M1221	M1222	E1223	I1224	L1225	R1226	T1227	T1228	H1229	K1230	F1231	L1232	Q1233	K1234	F1235	C1236	P1240	G1241	M1242			
Q1243	A1244	L1245	L1246	H1247	K1248	H1249	L1250	H1251	L1252	F1253	L1254	T1255	P1256	G1257	L1258	L1259	E1260	A1261	E1262	T1263	M1264	Q1265	H1266	I1267	F1268	Y1272	Q1273	L1274	C1275	S1276	E1277	I1278	S1279	E1280	F1281	V1282	L1283	Q1284	H1285	F1286	V1287	F1287	H1288	L1289	L1290	A1291	T1292	H1293	G1294	R1295	L1296	V1297	Q1298	Y1299	L1300	L1303	H1304				
I1307	K1308	A1309	E1310	G1311	K1312	Y1313	V1314	K1315	K1316	C1317	Q1318	D1319	M1320	I1321	M1322	T1323	E1324	L1325	T1326	M1327	A1328	G1329	D1330	D1331	V1332	V1333	V1334	F1335	Y1336	M1337	D1338	K1339	A1340	S1341	L1342	A1343	H1344	L1345	L1346	D1347	M1348	N1349	K1350	A1351	A1352	R1353	D1354	G1355	V1356	E1357	D1358	H1359	S1360	P1361	L1362	M1363	Y1364	H1365	I1366		
S1367	L1368	V1369	D1370	L1371	L1372	A1373	A1374	C1375	A1376	E1377	G1378	K1379	M1380	V1381	Y1382	T1383	E1384	I1385	K1386	C1387	T1388	S1389	L1390	L1391	P1392	L1393	E1394	D1395	V1396	S1397	S1398	V1399	V1400	T1401	H1402	E1403	D1404	C1405	L1406	T1407	E1408	Y1409	K1410	M1411	A1412	Y1413	Y1414	N1415	F1416	V1417	M1418	H1419	H1359	C1420	Y1421	V1422	D1423	THR	GLU	VAL	
GLU	MET	LYS	GLU	ILE	TYR	THR	SER	ASN	HIS	TRP	THR	LEU	PHE	GLU	ASN	PHE	THR	LEU	ASP	MET	ARG	VAL	VAL	CYS	SER	LYS	ARG	GLU	LYS	ARG	VAL	A1434	D1435	P1436	T1437	L1438	E1439	K1440	Y1441	V1442	L1443	S1444	V1445	V1446	L1447	D1448	T1449	I1450	M1451	A1452	F1453	F1454	SER	SER	PRO	PHE	SER	GLU			

ASN	L1462	ASN	L1788	LEU	Q1909	I1969	I2029	LEU	E2149	M2210
SER	Q1463	DI729	L1789	ARG	F1910	I1970	K2030	SER	E2150	L2211
THR	Q1464	K1730	H1790	ARG	L1911	T1971	K2031	LEU	T2151	A2212
LEU	Q1465	E1731	D1791	GLY	D1912	T1972	A2032	ASN	K2152	V2213
GLN	Q1466	G1732	M1792	HIS	I1913	L1973	Y2033	ASN	H2153	V2214
THR	Q1467	A1733	M1793	VAL	M1914	I1974	L2034	GLN	R2154	T2215
HIS	E1613	T1734	K1794	VAL	C1915	L1975	Q2035	LEU	L2155	M2216
GLN	L1614	K1735	A1795	GLU	C1916	N1976	E2036	SER	F2156	T2217
THR	S1615	L1736	A1796	VAL	S1917	D1977	E2037	GLN	T2157	T2218
ILE	V1616	V1737	A1797	VAL	T1918	I1978	E2038	LEU	T2158	T2219
VAL	V1617	D1738	Q1797	GLM	T1919	S1979	R2039	LYS	T2159	A2220
VAL	L1618	L1740	Q1798	SER	G1920	F1980	P1980	SER	E2160	A2221
GLN	C1517	L1741	G1799	SER	G1921	L1981	N2041	ALA	Q2161	F2221
LEU	A1518	I1742	T1800	GLU	G1922	C1982	N2042	PRO	D2162	V2222
LEU	A1519	T1743	K1801	LEU	L1923	K1983	S2042	ALA	E2163	V2223
LEU	A1520	S1743	S1802	VAL	L1924	L1984	E2043	GLN	Q2164	F2224
THR	A1521	T1744	T1803	MET	L1925	R1985	V2044	GLU	G2165	V2225
ARG	Q1522	K1745	V1804	ASN	G1926	M1986	S2045	GLU	S2166	M2226
LEU	R1523	E1746	ALA	ASN	L1927	D1987	R2046	GLY	K2167	GLU
LEU	N1524	E1747	VAL	ASN	Y1928	L1988	E2047	GLY	E2168	ALA
GLU	A1525	K1748	ASN	ASN	I1929	V1989	V2049	THR	P2169	SER
PRO	S1526	L1749	ASP	ASN	M1930	L1990	G2050	THR	D2170	THR
TRP	S1527	F1628	ASP	ASP	E1931	Q1991	Q2050	GLY	F2171	GLY
	S1528	L1629	GLY	GLY	D1932	L1992	M2051	LEU	F2172	VAL
	Y1528	E1630	SER	SER	M1933	K1993	O2052	LEU	Q2173	ASP
	Q1529	S1631	GLN	GLN	V1934	D1994	Y2053	ASP	D2174	SER
	A1530	G1632	PRO	PRO	G1935	M1995	Y2054	PRO	Q2175	PRO
	T1531	E1633	HIS	HIS	G1936	A1996	I2055		F2177	
	H1467	E1634	GLU	GLU	L1936	Q1878	I2056		L2178	
	K1467	A1634	ASP	ASP	V1937	L1879	A2057		H2179	
	G1468	L1635	ARG	ARG	T1938	L1880	L2058		N2180	
	S1469	Q1636	ARG	GLU	C1939	E1881	Q2059		E2181	
	V1470	R1637	LYS	PRO	L1940	E1882	L2060		L2124	
	E1471	C1638	LYS	VAL	M1883	M1884	S2061		E2125	
	A1472	E1639	SER	PRO	L1941	H1884	R2062		I2126	
	C1473	A1472	THR	THR	E1942	M1885	L2003		V2127	
	C1474	V1545	ARG	THR	T1943	M1885	M2004		R2128	
	R1475	T1546	ARG	THR	L1944	R1886	E2005		Q2129	
	T1476	P1547	GLY	LYS	T1945	R1887	M2064		D2130	
	L1477	T1548	ASP	ARG	E1946	L1888	Q2065		R2131	
	A1478	A1549	LEU	VAL	Y1947	Q1889	L2067		S2132	
	M1479	A1550	PRO	ALA	C1948	M1890	Q2068		M2133	
	V1480	Q1551	PRO	SER	E1949	F1891	H2069		E2134	
	M1481	M1552	THR	PHE	G1950	L1892	L2070		Q2135	
	K1482	D1587	THR	SER	P1951	R1893	L2071		I2136	
	G1483	Y1588	GLY	ILE	C1952	C1894	K2072		V2137	
	R1484	K1589	LEU	GLY	H1953	Q1895	P2073		F2138	
	I1490	M1590	PRO	SER	E1954	M1896	V2074		P2139	
	I1491	I1591	ASP	SER	M1955	M1897	LYS		V2140	
	L1492	I1592	PRO	ARG	Q1956	M1897	ARG		P2141	
	E1593	M1655	THR	THR	T1957	K1898	ILE		G2142	
	L1494	M1656	LEU	SER	C1958	L1899	GLN		T2143	
	P1494	L1493	A1720	SER	I1959	M1900	GLU		I2144	
	M1495	K1595	I1721	PRO	Y1960	Y1901	LEU		C2144	
	Q1596	Q1596	A1722	PRO	T1961	M1902	GLU		Q2145	
	D1597	D1597	I1723	SER	H1962	L1903	ALA		F2146	
	I1598	I1598	K1781	SER	E1963	V1904	GLU		L2147	
	I1599	I1599	Q1725	THR	S1964	C1905	ILE		T2148	
	T1600	T1600	C1726	SER	M1965	E1906	GLY			
	A1601	A1601	R1787	PRO	G1967	T1907	SER			
	E1602	E1602	F1785	SER	I1967	L1908	MET			
	E1603	E1603	F1786		D1968					
	E1604	E1604	K1787							
	R1605	R1605								
	L1606	L1606								

L2270	R2271	S2272	I2273	V2274	Y2275	L2276	G2277	I2278	G2279	F2280	T2281	L2282	N2283	I2343	L2344	L2285	G2286	A2287	L2288	N2289	L2290	T2291	N2292	K2293	L2294	V2295	F2296	V2297	V2298	S2299	F2300	V2301	G2302	N2303	R2304	G2305	T2306	F2307	I2308	R2309	G2310	Y2311	K2312	A2313	M2314	V2315	M2316	D2317	M2318	E2319	F2320	L2321	H2322	H2323	G2325	Y2326	L2327	L2328	T2329	
S2330	V2331	L2332	G2333	L2334	F2335	A2336	H2337	E2338	L2339	F2340	Y2341	S2342	ASN	I2343	L2344	L2345	F2346	D2347	L2348	L2349	Y2350	R2351	E2352	E2353	T2354	L2355	F2356	N2357	V2358	I2359	K2360	S2361	V2362	T2363	R2364	N2365	G2366	R2367	S2368	I2369	L2370	L2371	T2372	A2373	L2374	L2375	A2376	L2377	I2378	V2379	V2380	Y2381	L2382	F2383	V2386	G2387	F2388	L2389	F2390	
L2391	K2392	D2393	D2394	F2395	L2396	L2397	F2398	V2399	D2400	R2401	L2402	P2403	ASN	HIS	THR	THR	ALA	ALA	PRO	PRO	GLY	MET	PRO	HIS	GLY	ALA	ALA	ALA	PHE	VAL	ASP	THR	CYS	SER	GLY	ASP	LYS	MET	ASP	CYS	VAL	SER	GLY	LEU	SER	VAL	PRO	GLU	VAL	VAL	LEU	LEU	GLU	GLU	ASP	ARG	GLU	LEU	D2449	S2450
T2451	E2452	R2453	A2454	C2455	D2456	T2457	L2458	L2459	M2460	C2461	T2462	V2463	T2464	V2465	M2466	N2467	H2468	G2469	L2470	R2471	N2472	G2473	G2474	G2475	V2476	G2477	D2478	I2479	L2480	R2481	K2482	P2483	S2484	K2485	D2486	E2487	S2488	L2489	F2490	F2491	A2492	R2493	V2494	V2495	Y2496	D2497	L2498	L2499	F2500	F2501	F2502	I2503	V2504	I2505	I2506	I2507	V2508	L2509	M2510	
L2511	I2512	F2513	G2514	V2515	I2516	I2517	D2518	T2519	F2520	A2521	D2522	L2523	R2524	S2525	E2526	K2527	Q2528	K2529	K2530	E2531	E2532	I2533	L2534	K2535	T2536	T2537	C2538	F2539	I2540	C2541	G2542	L2543	E2544	R2545	D2546	K2547	F2548	D2549	N2550	K2551	T2552	V2553	V2554	F2555	E2556	E2557	H2558	I2559	K2560	L2561	E2562	H2563	N2564	M2565	Y2566	L2569	Y2570	F2571		
I2572	V2573	L2574	V2575	V2576	V2577	K2578	N2579	K2580	L2581	D2582	L2583	T2584	G2585	E2586	F2587	S2588	V2589	V2590	A2591	Q2592	N2593	I2594	K2595	N2596	K2597	N2598	L2599	D2600	V2601	F2602	P2603	R2604	M2605	R2606	A2607	M2608	S2609	L2610	V2611	SER	ASN	GLU	GLY	GLU	GLY	GLN	ASN	GLU	ASN	ILE	SER	ARG								
THR	MET	LYS	LEU	VAL	SER	HIS	LEU	THR	ALA	GLN	LEU	ASN	GLU	LEU	THR	GLU	GLN	ARG	LYS	ARG	ARG	GLN	ARG	LEU	PHE	VAL	ASP	VAL	GLN	ASN	CYS	ILE	SER	ARG																										

● Molecule 1: Inositol 1,4,5-trisphosphate receptor type 3



MET	SER	GLU	MET	S5	L8	H9	I10	G11	D12	I13	V14	S15	L16	Y17	A18	E19	G20	S21	V22	M23	G24	F25	I26	S27	T28	L29	G30	L31	V32	D33	D34	R35	C36	V37	V38	E39	P40	A41	A42	G43	D44	L45	D46	N47	P48	P49	K109	K110	K51	F52	R53	D54	G55	L56	F57	R58	K59	C60	P61
M62	M63	R64	V65	S66	A67	Q68	K69	Q70	Y71	W72	K73	A74	K75	Q76	T77	LYS	ASP	LYS	GLU	LYS	ILE	A85	D86	W87	V88	L89	L90	Q91	R92	L93	Q94	H95	A96	Q98	M99	E100	Q101	K102	Q103	M104	D105	T106	E107	M108	K109	K168	L170	V111	H112	G113	D114	V115	V116	K117	Y118	G119	S120	V121	
I122	Q123	L124	L125	H126	M127	K128	S129	M130	K131	Y132	L133	T134	V135	M136	K137	R138	L139	P140	L201	S202	D203	M204	A205	G206	C207	K208	E209	R149	V150	T151	L152	D153	M154	L155	G156	M157	E158	G159	S160	W161	L162	F163	I164	Q165	P166	F167	W168	K169	L170	R171	S172	M173	G174	D175	M176	V177	V178	G180	D181
K182	V183	I184	L185	N186	P187	V188	M189	A190	G191	P192	L193	L194	H195	A196	S197	N198	Y199	E200	L201	S202	D203	M204	A205	G206	C207	K208	E209	R149	V150	T151	L152	D153	M154	L155	G156	M157	E158	G159	S160	W161	L162	F163	I164	Q165	P166	F167	W168	K169	L170	R171	S172	M173	G174	D175	M176	V177	V178	G180	D181
K182	V183	I184	L185	N186	P187	V188	M189	A190	G191	P192	L193	L194	H195	A196	S197	N198	Y199	E200	L201	S202	D203	M204	A205	G206	C207	K208	E209	R149	V150	T151	L152	D153	M154	L155	G156	M157	E158	G159	S160	W161	L162	F163	I164	Q165	P166	F167	W168	K169	L170	R171	S172	M173	G174	D175	M176	V177	V178	G180	D181
L243	F244	H245	A246	E249	K250	F251	L252	T253	C254	D255	E256	Y257	K258	G259	K260	L261	Q262	V263	F264	L265	R266	T267	T268	L269	R270	Q271	S272	A273	T274	S275	A276	T277	S278	S279	N280	A281	L282	W283	E284	V285	E286	V287	V288	H289	H290	D291	P292	C293	R294	G295	G296	A297	M300	N301	G302	L303	Y304		

R305	F306	K307	H308	L309	A310	T311	G312	N313	Y314	E318	E319	N320	SER	TYR	LYS	GLY	ASP	ALA	SER	ASP	PRO	LYS	ALA	ALA	GLY	MET	GLY	ALA	GLN	GLY	ARG	ARG	ASN	ALA	GLY	GLU	LYS	I350	K351	L354	V355	A356	V357	P358	H359	G360	N361	D362	I363	A364	S365	L366	F367											
E368	L369	D370	P371	T372	T373	L374	Q375	K376	T377	D378	S379	F380	V381	P382	R383	N384	S385	A448	Y386	V387	R388	L389	R390	H391	L392	C393	T394	N395	T396	V397	I398	Q399	S400	T401	M402	Q466	M467	P404	P404	I405	D406	I407	I407	E408	E409	E410	R411	P412	I413	R414	L415	M416	L417	G418	T419	C420	S484	K423	E424	D425	E427			
A428	F429	A430	P435	V436	S437	E438	I439	R440	D441	L442	D443	F444	A445	N446	D447	S449	S450	M451	L452	A453	S454	A455	V456	E457	K458	L459	M460	E461	G462	F463	I464	S465	Q466	D468	R469	R470	F471	V472	I473	Q474	L475	L476	E477	D478	L479	V480	F481	F482	V483	S484	D485	V486	P487	M488	M489	G490								
Q491	M492	V493	L494	D495	M497	V498	T499	K500	P501	N502	R503	E504	Q505	Q506	K507	L508	M509	R510	Q512	N513	I514	L515	K516	Q517	V518	F519	G520	I521	L522	K523	P525	F526	GLU	LYS	GLY	GLY	GLY	P534	L535	V536	R537	L538	E539	E540	L541	S542	D543	Q544	K545	N546	A547	P548	Y549	Q550										
H551	M552	F553	R554	L555	C556	Y557	R558	V559	L560	H561	H562	S563	Q564	F565	D566	Y567	R568	K569	N570	Q571	E572	H573	I574	A575	K576	Q577	F578	G579	M580	M581	Q582	S583	Q584	I585	G586	Y587	D588	I589	L590	A591	E592	D593	T594	I595	T596	A597	L598	L599	H600	N601	N602	R603	K604	L605	L606	E607	K608	H609	I610					
T611	K612	T613	E616	T617	F618	V619	S620	L621	V622	R623	K624	N625	R626	E627	P628	R629	F630	L631	D632	V633	L634	S635	D636	L637	C638	V639	S640	N641	H642	I643	A644	I645	P646	V647	T648	Q649	L651	I652	C653	K654	C655	V656	L657	D658	P659	K660	N661	S662	D663	I664	L665	I666	T667	E668	E669	L670	R671							
P672	V673	K674	GLU	MET	ALA	GLN	SER	HIS	GLU	TYR	LEU	SER	ILE	GLU	TYR	GLU	GLU	E691	V692	M693	L694	T695	V696	L697	E698	K699	N700	N701	E702	H703	H704	E705	K706	S707	V708	R709	Q710	L711	A712	E714	A715	R716	A717	G718	M719	A720	H721	D722	E723	N724	V725	L726	S727	Y728	Y729	R730	Y731							
Q732	L733	K734	L735	F736	A737	R738	M739	C740	L741	D742	R743	V745	L746	A747	D748	D749	E750	I751	S752	V753	Q754	L755	D758	L759	I760	F761	L762	C763	M764	A765	D766	E767	M768	L769	P770	F771	D772	L773	R774	A775	S776	F777	C778	H779	L780	M781	L782	H783	V784	H785	V786	D787	R788	D789	Q791	E792								
L793	W794	T795	P796	K798	F799	A800	R801	L802	H803	T804	E805	L806	P807	T808	I810	T811	L812	K813	D814	Y815	D816	S817	N818	L819	I820	A821	S822	R823	D824	D825	K826	K827	M828	G829	I831	H832	T833	H834	E835	F836	H837	E838	D839	Y840	L841	N842	H843	V844	H845	S846	E847	A848	V849	P850	F851	A852								
M853	E854	E855	K856	N857	K858	L859	T860	F861	E862	V863	V864	S865	L866	A867	L870	Y871	F872	F873	G874	F875	Y876	S877	F878	S879	E880	L881	L882	L884	T885	R886	T887	L888	L889	G890	I891	I892	D893	V963	V964	M965	E966	T967	K968	L969	K970	I971	L972	E973																
ARG	ARG	SER	ILE	GLN	GLY	VAL	GLY	HIS	MET	SER	THR	MET	VAL	LEU	ARG	LYS	GLN	SER	PHE	SER	ALA	PRO	SER	LEU	ALA	GLY	ASP	ARG	SER	LYS	PHE	GLU	GLU	ASN	D961	I962	V963	V964	M965	E966	T967	K968	L969	K970	I971	L972	E973																	
I974	L975	Q976	F977	I978	L979	N980	V981	L983	D984	R985	R986	I987	S988	Y989	L990	L991	S992	V993	F994	K995	K996	E997	F998	V999	E1000	V1001	F1002	PRO	MET	GLN	ASP	GLY	ALA	ASP	GLY	ALA	THR	THR	ALA	ASN	PRO	ALA	PHE	ASP	SER	THR	THR	ALA	ASN	MET	M1024	L1025	D1026	I1027	I1028	G1029	E1030	Q1031	M1032	M1033	T1091	F1092	K1093	Q1094
A1034	M1035	F1036	G1037	VAL	GLY	LYS	THR	SER	M1043	M1044	L1045	E1046	V1047	D1048	D1049	E1050	R1053	M1054	F1055	L1056	R1057	V1058	L1059	I1060	H1061	L1062	T1063	M1064	H1065	D1066	Y1067	A1068	P1069	L1070	V1071	S1072	G1073	A1074	L1075	Q1076	L1077	L1078	F1079	K1080	H1081	F1082	S1083	Q1084	R1085	Q1086	E1087	M1089	H1090	T1091	F1092	K1093	Q1094							

L1875	L1876	L1877	L1878	L1879	L1880	C1881	E1882	N1883	H1884	N1885	R1886	D1887	L1888	Q1889	N1890	F1891	L1892	R1893	C1894	Q1895	N1896	N1897	K1898	T1899	N1900	Y1901	N1902	L1903	V1904	C1905	E1906	T1907	L1908	Q1909	F1910	L1911	D1912	I1913	N1914	G1915	G1916	S1917	T1918	T1919	G1920	G1921	L1922	G1923	L1924	L1925	G1926	L1927	I1928	I1929	N1930	E1931	D1932	N1933	Y1934			
G1935	L1936	Y1937	I1938	Q1939	L1941	E1942	T1943	L1944	T1945	E1946	Y1947	C1948	Q1949	G1950	P1951	C1952	H1953	E1954	N1955	Q1956	T1957	C1958	I1959	V1960	T1961	H1962	E1963	L1964	N1965	G1966	I1967	D1968	I1969	L1970	F1971	A1972	L1973	I1974	L1975	N1976	D1977	R1978	S1979	P1980	L1981	G1982	C1983	G1984	K1985	R1986	D1987	L1988	V1989	L1990	Q1991	L1992	K1993	D1994				
M1995	K1996	L2000	L2001	A2002	L2003	M2004	E2005	S2006	R2007	H2008	D2009	C1948	Q1949	S2010	E2011	N2012	A2013	E2014	R2015	I2016	L2017	I2018	S2019	L2020	R2021	P2022	Q2023	E2024	L2025	V2026	D2027	V2028	I2029	K2030	L2031	A2032	Y2033	L2034	Q2035	E2036	E2037	E2038	R2039	E2040	N2041	E2042	S2043	V2044	S2045	P2046	R2047	E2048	G2049	G2050	H2051	N2052	L1992	Y2054	I2055			
L2056	A2057	L2058	L2060	S2061	H2062	M2064	K2065	Q2066	Q2068	H2069	L2070	L2071	K2072	P2073	V2074	LYS	ARG	I2016	ILE	GLN	GLU	GLU	S2019	L2020	ALA	GLU	GLY	ILE	SER	MET	LEU	SER	LEU	ASN	LYS	GLN	SER	GLN	MET	L2034	L2035	SER	ALA	PRO	E2160	GLN	GLU	GLU	E2111	D2112	A2115	Y2116										
Y2117	E2118	N2119	H2120	T2121	S2122	Q2123	I2124	E2125	I2126	R2127	R2128	Q2129	D2130	R2131	S2132	M2133	E2134	Q2135	I2136	V2137	F2138	P2139	V2140	P2141	G2142	I2143	C2144	Q2145	L2147	T2148	E2149	E2150	T2151	K2152	H2153	R2154	L2155	F2156	T2157	T2158	T2159	E2160	Q2161	D2162	E2163	Q2164	G2165	K2166	V2167	V2168	S2169	D2170	F2171	D2172	D2173	Q2174	S2175	S2176				
F2177	L2178	H2179	N2180	E2181	N2182	E2183	N2184	Q2185	R2186	K2187	L2188	L2189	S2190	P2191	P2192	L2193	I2194	Y2195	N2196	F2197	S2198	R2199	R2200	M2201	T2202	L2203	W2204	G2205	I2206	S2207	S2208	F2209	N2210	L2211	A2212	I2215	N2216	I2217	I2218	I2219	A2220	F2221	F2222	V2223	P2224	V2225	N2226	GLU	GLY	ALA	SER	THR	GLY	VAL	LEU	ASP	PRO					
L2231	I2232	S2233	L2234	L2235	F2236	W2237	I2238	L2239	I2240	C2241	F2242	S2243	I2244	A2245	A2246	L2247	F2248	T2249	K2250	R2251	Y2252	S2260	I2261	R2262	P2263	L2264	I2265	V2266	A2267	L2268	I2269	L2270	R2271	S2272	I2273	Y2274	E2275	L2276	G2277	I2278	P2280	L2281	N2283	I2284	L2285	G2286	A2287	L2288	N2289	L2290	T2291	N2292	K2293	L2294	V2295	F2296	V2297					
V2298	S2299	F2300	V2301	G2302	N2303	R2304	G2305	T2306	F2307	I2308	R2309	G2310	Y2311	K2312	A2313	M2314	V2315	M2316	M2318	E2319	F2320	L2321	Y2322	H2323	V2324	G2325	Y2326	I2327	L2328	T2329	S2330	V2331	L2332	G2333	L2334	F2335	A2336	H2337	E2338	L2339	F2340	Y2341	S2342	L2343	L2345	F2346	D2347	L2348	L2349	Y2350	N2351	E2352	E2353	T2354	L2355	F2356	N2357					
V2358	I2359	K2360	S2361	V2362	T2363	R2364	N2365	G2366	R2367	S2368	I2369	L2370	L2371	T2372	A2373	L2374	L2375	A2376	L2377	I2378	L2379	V2380	Y2381	L2382	F2383	S2384	I2385	V2386	G2387	F2388	L2389	F2390	L2391	K2392	D2393	D2394	F2395	I2396	L2397	E2398	V2399	D2400	R2401	L2402	P2403	ASN	ASN	HIS	SER	THR	ALA	SER	PRO	PRO	LEU	GLY	MET	PRO	HIS	L2355	F2356	N2357
ALA	ALA	ALA	PHE	VAL	ASP	THR	CYS	SER	GLY	ASP	LYS	MET	ASP	CYS	VAL	GLY	LEU	VAL	PRO	GLU	VAL	LEU	GLU	GLU	D2449	D2450	T2451	E2452	R2453	A2454	C2455	D2456	T2457	L2458	L2459	M2460	C2461	I2462	V2463	T2464	V2465	M2466	N2467	H2468	G2469	L2470	R2471	N2472	G2473	G2474	G2475	V2476	G2477									
D2478	I2479	L2480	R2481	K2482	P2483	S2484	K2485	D2486	E2487	S2488	L2489	F2490	P2491	A2492	R2493	V2494	V2495	Y2496	D2497	L2498	L2499	F2500	F2501	F2502	I2503	V2504	I2505	L2506	I2507	V2508	L2509	N2510	L2511	L2512	F2513	G2514	V2515	L2516	L2517	D2518	T2519	F2520	A2521	D2522	L2523	R2524	S2525	E2526	K2527	Q2528	K2529	K2530	E2531	E2532	L2533	L2534	K2535	T2536	T2537			
C2538	P2539	I2540	C2541	G2542	L2543	E2544	R2545	D2546	K2547	F2548	D2549	N2550	K2551	T2552	V2553	S2554	F2555	E2556	I2559	K2560	H2563	N2564	M2565	W2566	N2567	Y2568	L2569	Y2570	F2571	L2574	V2575	R2576	V2577	V2578	V2579	K2580	T2581	D2582	Y2583	T2584	E2587	S2588	Y2589	V2590	A2591	Q2592	M2593	I2594	K2595	N2596	K2597	N2598	L2599	D2600								
W2601	F2602	P2603	R2604	N2605	R2606	A2607	N2608	S2609	L2610	L2611	SER	ASN	GLY	GLU	GLY	GLY	GLU	GLN	ASN	GLU	ILE	ARG	LEU	LEU	GLN	ASP	LYS	LEU	ASN	THR	MET	LYS	LEU	VAL	SER	HIS	LEU	THR	ALA	GLN	LEU	ASN	GLU	GLU	LEU	THR	GLN	ARG	ARG	ARG	GLN	ARG	LEU									

GLY
PHE
VAL
ASP
VAL
GLN
ASN
CYS
ILE
SER
ARG

4 Experimental information

Property	Value	Source
EM reconstruction method	SINGLE PARTICLE	Depositor
Imposed symmetry	POINT, C4	Depositor
Number of particles used	26325	Depositor
Resolution determination method	FSC 0.143 CUT-OFF	Depositor
CTF correction method	PHASE FLIPPING AND AMPLITUDE CORRECTION	Depositor
Microscope	FEI TITAN KRIOS	Depositor
Voltage (kV)	300	Depositor
Electron dose ($e^-/\text{\AA}^2$)	60	Depositor
Minimum defocus (nm)	1000	Depositor
Maximum defocus (nm)	Not provided	
Magnification	105000	Depositor
Image detector	GATAN K2 SUMMIT (4k x 4k)	Depositor
Maximum map value	34.630	Depositor
Minimum map value	-19.505	Depositor
Average map value	0.017	Depositor
Map value standard deviation	1.473	Depositor
Recommended contour level	5.72	Depositor
Map size (Å)	417.79202, 417.79202, 417.79202	wwPDB
Map dimensions	384, 384, 384	wwPDB
Map angles (°)	90.0, 90.0, 90.0	wwPDB
Pixel spacing (Å)	1.088, 1.088, 1.088	Depositor

5 Model quality [i](#)

5.1 Standard geometry [i](#)

Bond lengths and bond angles in the following residue types are not validated in this section:
ZN

The Z score for a bond length (or angle) is the number of standard deviations the observed value is removed from the expected value. A bond length (or angle) with $|Z| > 5$ is considered an outlier worth inspection. RMSZ is the root-mean-square of all Z scores of the bond lengths (or angles).

Mol	Chain	Bond lengths		Bond angles	
		RMSZ	# Z >5	RMSZ	# Z >5
1	A	0.38	0/17606	0.51	4/23791 (0.0%)
1	B	0.38	0/17606	0.51	4/23791 (0.0%)
1	C	0.38	0/17606	0.51	4/23791 (0.0%)
1	D	0.38	0/17606	0.51	4/23791 (0.0%)
All	All	0.38	0/70424	0.51	16/95164 (0.0%)

There are no bond length outliers.

The worst 5 of 16 bond angle outliers are listed below:

Mol	Chain	Res	Type	Atoms	Z	Observed(°)	Ideal(°)
1	B	1494	PRO	N-CA-CB	5.60	110.02	103.30
1	C	1494	PRO	N-CA-CB	5.60	110.02	103.30
1	A	1547	PRO	N-CA-CB	5.59	110.00	103.30
1	D	1494	PRO	N-CA-CB	5.57	109.99	103.30
1	B	1547	PRO	N-CA-CB	5.57	109.98	103.30

There are no chirality outliers.

There are no planarity outliers.

5.2 Too-close contacts [i](#)

In the following table, the Non-H and H(model) columns list the number of non-hydrogen atoms and hydrogen atoms in the chain respectively. The H(added) column lists the number of hydrogen atoms added and optimized by MolProbity. The Clashes column lists the number of clashes within the asymmetric unit, whereas Symm-Clashes lists symmetry-related clashes.

Mol	Chain	Non-H	H(model)	H(added)	Clashes	Symm-Clashes
1	A	17302	17316	17145	132	0
1	B	17302	17317	17145	136	0

Continued on next page...

Continued from previous page...

Mol	Chain	Non-H	H(model)	H(added)	Clashes	Symm-Clashes
1	C	17302	17316	17145	135	0
1	D	17302	17316	17145	131	0
2	A	1	0	0	0	0
2	B	1	0	0	0	0
2	C	1	0	0	0	0
2	D	1	0	0	0	0
All	All	69212	69265	68580	520	0

The all-atom clashscore is defined as the number of clashes found per 1000 atoms (including hydrogen atoms). The all-atom clashscore for this structure is 4.

The worst 5 of 520 close contacts within the same asymmetric unit are listed below, sorted by their clash magnitude.

Atom-1	Atom-2	Interatomic distance (Å)	Clash overlap (Å)
1:A:764:MET:O	1:A:774:ARG:NH1	2.20	0.74
1:C:764:MET:O	1:C:774:ARG:NH1	2.20	0.74
1:C:1619:ASP:OD2	1:C:1687:ARG:NH2	2.20	0.74
1:B:764:MET:O	1:B:774:ARG:NH1	2.20	0.74
1:D:764:MET:O	1:D:774:ARG:NH1	2.20	0.74

There are no symmetry-related clashes.

5.3 Torsion angles [i](#)

5.3.1 Protein backbone [i](#)

In the following table, the Percentiles column shows the percent Ramachandran outliers of the chain as a percentile score with respect to all PDB entries followed by that with respect to all EM entries.

The Analysed column shows the number of residues for which the backbone conformation was analysed, and the total number of residues.

Mol	Chain	Analysed	Favoured	Allowed	Outliers	Percentiles	
1	A	2139/2671 (80%)	2043 (96%)	96 (4%)	0	100	100
1	B	2139/2671 (80%)	2042 (96%)	97 (4%)	0	100	100
1	C	2139/2671 (80%)	2042 (96%)	97 (4%)	0	100	100
1	D	2139/2671 (80%)	2042 (96%)	97 (4%)	0	100	100
All	All	8556/10684 (80%)	8169 (96%)	387 (4%)	0	100	100

There are no Ramachandran outliers to report.

5.3.2 Protein sidechains [i](#)

In the following table, the Percentiles column shows the percent sidechain outliers of the chain as a percentile score with respect to all PDB entries followed by that with respect to all EM entries.

The Analysed column shows the number of residues for which the sidechain conformation was analysed, and the total number of residues.

Mol	Chain	Analysed	Rotameric	Outliers	Percentiles	
1	A	1874/2385 (79%)	1848 (99%)	26 (1%)	62	79
1	B	1874/2385 (79%)	1848 (99%)	26 (1%)	62	79
1	C	1874/2385 (79%)	1848 (99%)	26 (1%)	62	79
1	D	1874/2385 (79%)	1848 (99%)	26 (1%)	62	79
All	All	7496/9540 (79%)	7392 (99%)	104 (1%)	62	79

5 of 104 residues with a non-rotameric sidechain are listed below:

Mol	Chain	Res	Type
1	C	538	LEU
1	C	2222	PHE
1	D	2402	LEU
1	C	787	ASP
1	C	1691	LEU

Sometimes sidechains can be flipped to improve hydrogen bonding and reduce clashes. 5 of 19 such sidechains are listed below:

Mol	Chain	Res	Type
1	C	1773	HIS
1	D	1199	ASN
1	D	1288	HIS
1	D	869	ASN
1	C	402	ASN

5.3.3 RNA [i](#)

There are no RNA molecules in this entry.

5.4 Non-standard residues in protein, DNA, RNA chains [i](#)

There are no non-standard protein/DNA/RNA residues in this entry.

5.5 Carbohydrates [i](#)

There are no oligosaccharides in this entry.

5.6 Ligand geometry [i](#)

Of 4 ligands modelled in this entry, 4 are monoatomic - leaving 0 for Mogul analysis.

There are no bond length outliers.

There are no bond angle outliers.

There are no chirality outliers.

There are no torsion outliers.

There are no ring outliers.

No monomer is involved in short contacts.

5.7 Other polymers [i](#)

There are no such residues in this entry.

5.8 Polymer linkage issues [i](#)

The following chains have linkage breaks:

Mol	Chain	Number of breaks
1	A	5
1	B	5
1	C	5
1	D	5

The worst 5 of 20 chain breaks are listed below:

Model	Chain	Residue-1	Atom-1	Residue-2	Atom-2	Distance (Å)
1	A	1552:TRP	C	1587:ASP	N	49.53
1	B	1552:TRP	C	1587:ASP	N	49.53
1	C	1552:TRP	C	1587:ASP	N	49.53
1	D	1552:TRP	C	1587:ASP	N	49.53

Continued on next page...

Continued from previous page...

Model	Chain	Residue-1	Atom-1	Residue-2	Atom-2	Distance (Å)
1	A	1484:ARG	C	1490:ALA	N	15.78

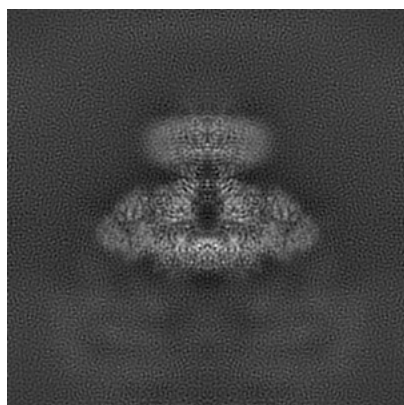
6 Map visualisation [i](#)

This section contains visualisations of the EMDB entry EMD-7978. These allow visual inspection of the internal detail of the map and identification of artifacts.

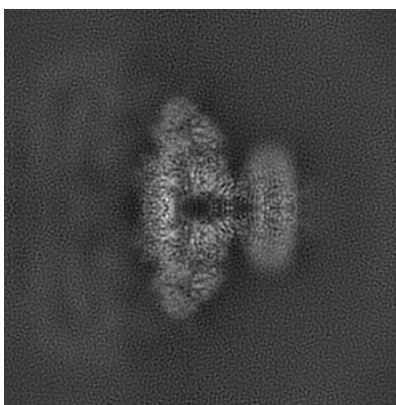
No raw map or half-maps were deposited for this entry and therefore no images, graphs, etc. pertaining to the raw map can be shown.

6.1 Orthogonal projections [i](#)

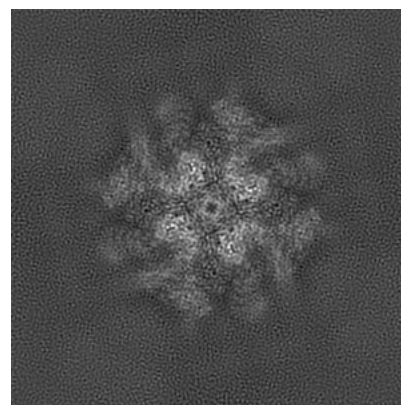
6.1.1 Primary map



X



Y

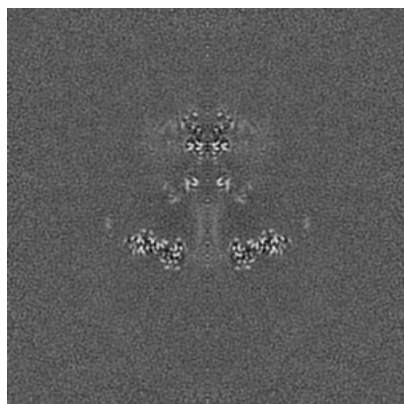


Z

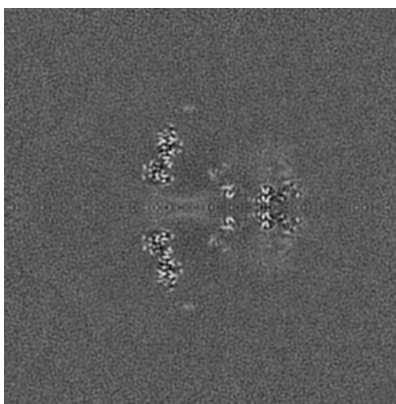
The images above show the map projected in three orthogonal directions.

6.2 Central slices [i](#)

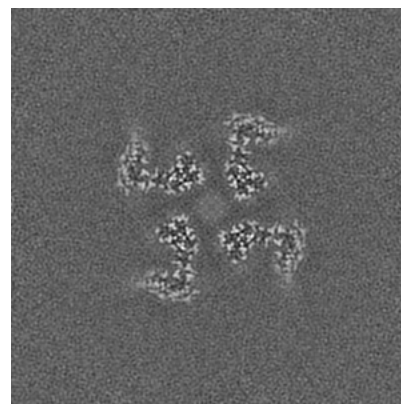
6.2.1 Primary map



X Index: 192



Y Index: 192

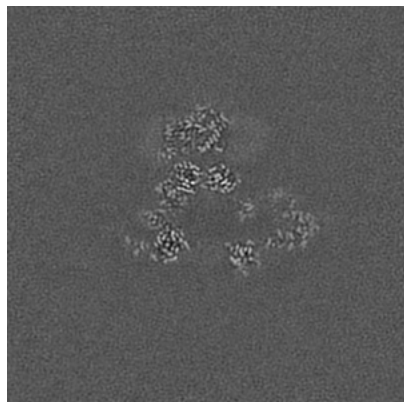


Z Index: 192

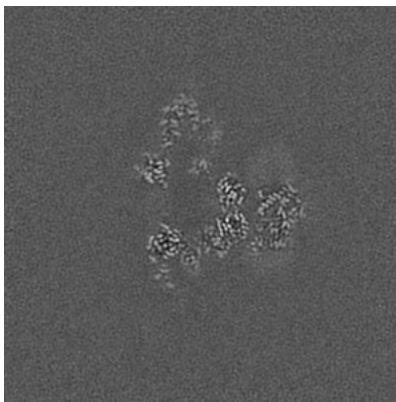
The images above show central slices of the map in three orthogonal directions.

6.3 Largest variance slices [i](#)

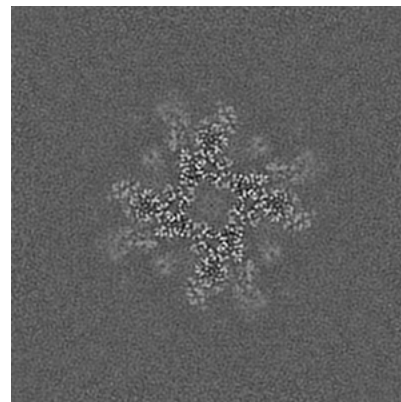
6.3.1 Primary map



X Index: 207



Y Index: 177

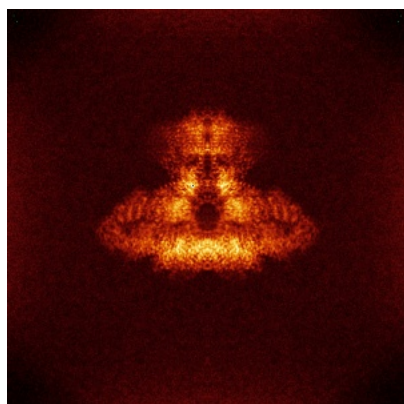


Z Index: 155

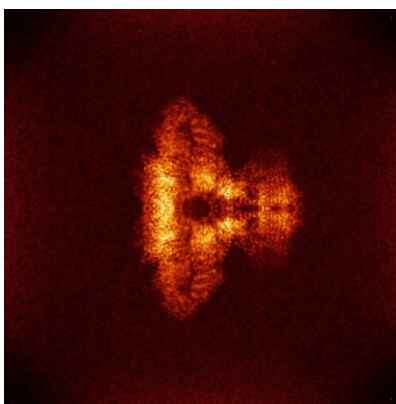
The images above show the largest variance slices of the map in three orthogonal directions.

6.4 Orthogonal standard-deviation projections (False-color) [i](#)

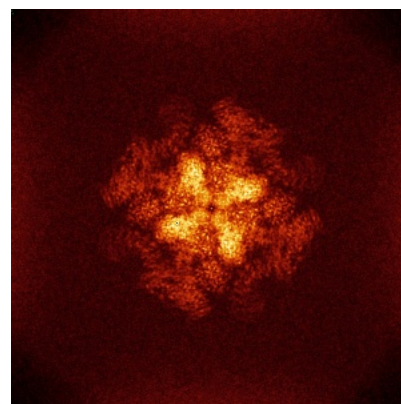
6.4.1 Primary map



X



Y

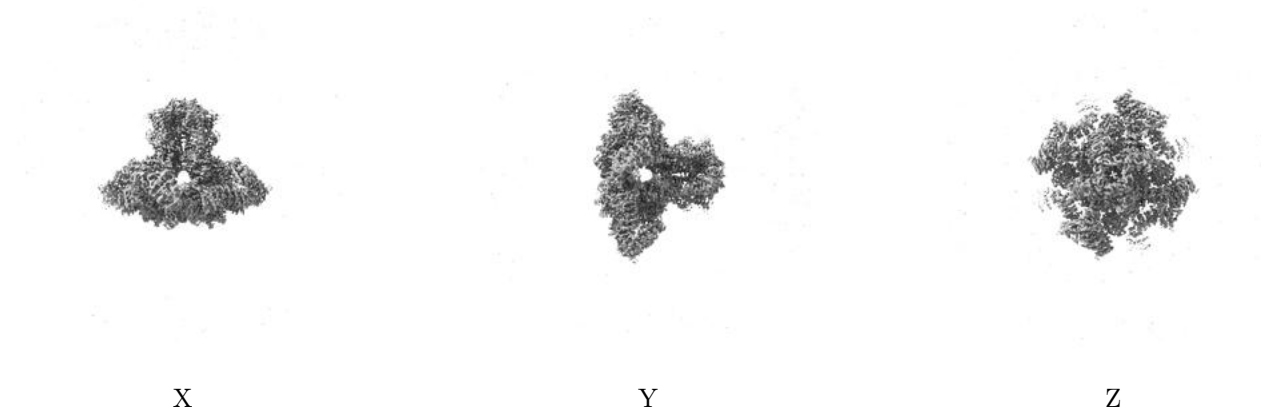


Z

The images above show the map standard deviation projections with false color in three orthogonal directions. Minimum values are shown in green, max in blue, and dark to light orange shades represent small to large values respectively.

6.5 Orthogonal surface views [i](#)

6.5.1 Primary map



The images above show the 3D surface view of the map at the recommended contour level 5.72. These images, in conjunction with the slice images, may facilitate assessment of whether an appropriate contour level has been provided.

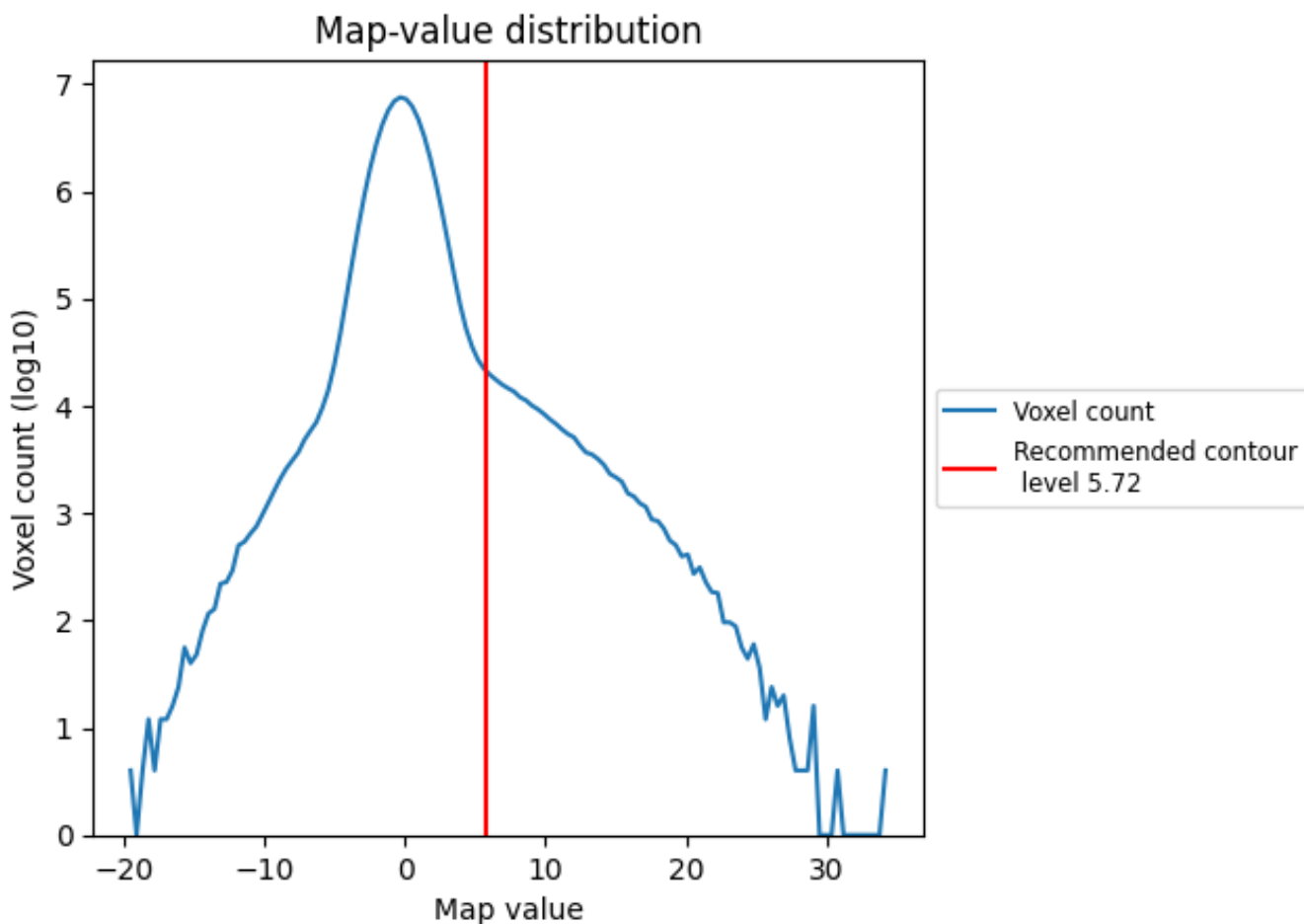
6.6 Mask visualisation [i](#)

This section was not generated. No masks/segmentation were deposited.

7 Map analysis [i](#)

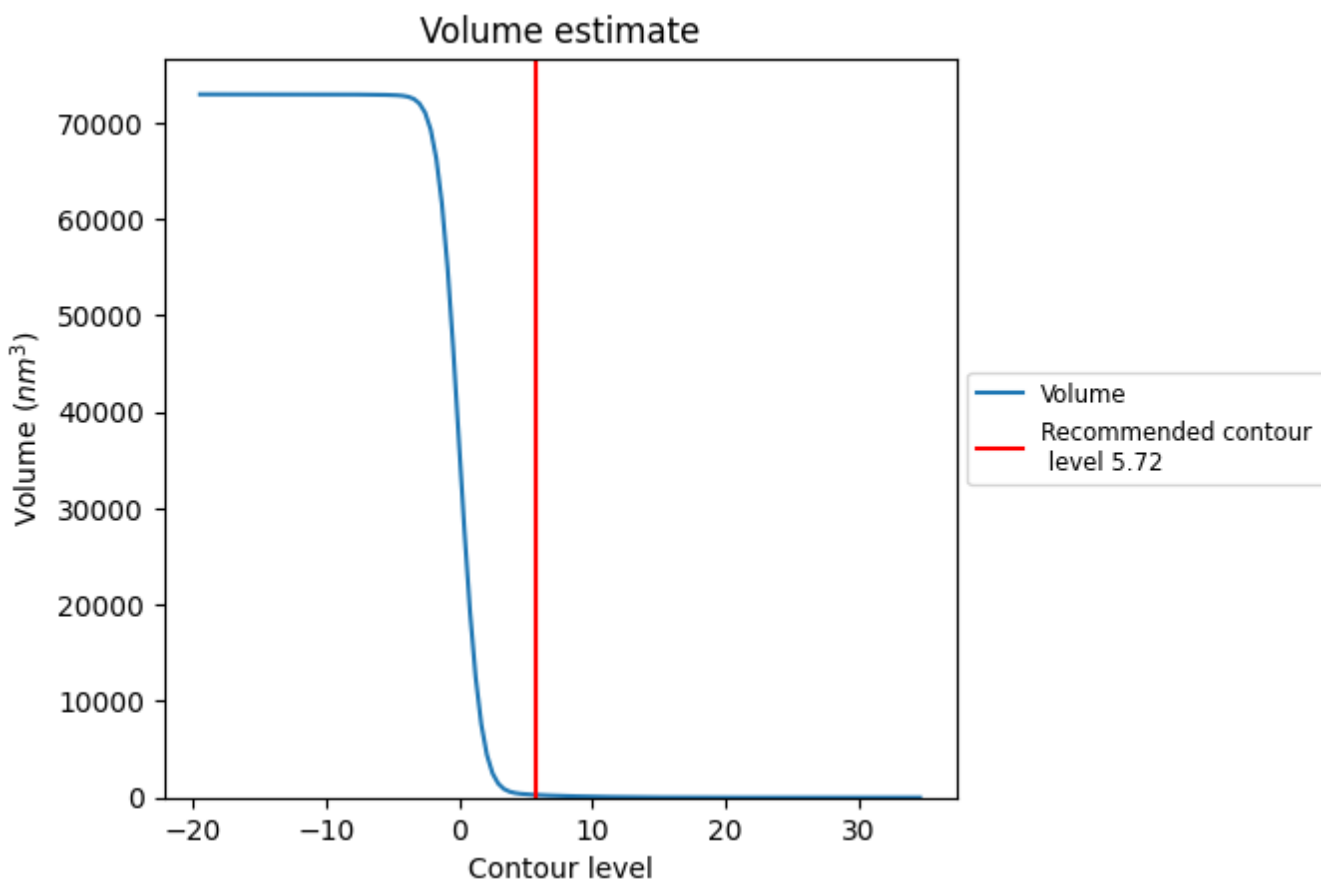
This section contains the results of statistical analysis of the map.

7.1 Map-value distribution [i](#)



The map-value distribution is plotted in 128 intervals along the x-axis. The y-axis is logarithmic. A spike in this graph at zero usually indicates that the volume has been masked.

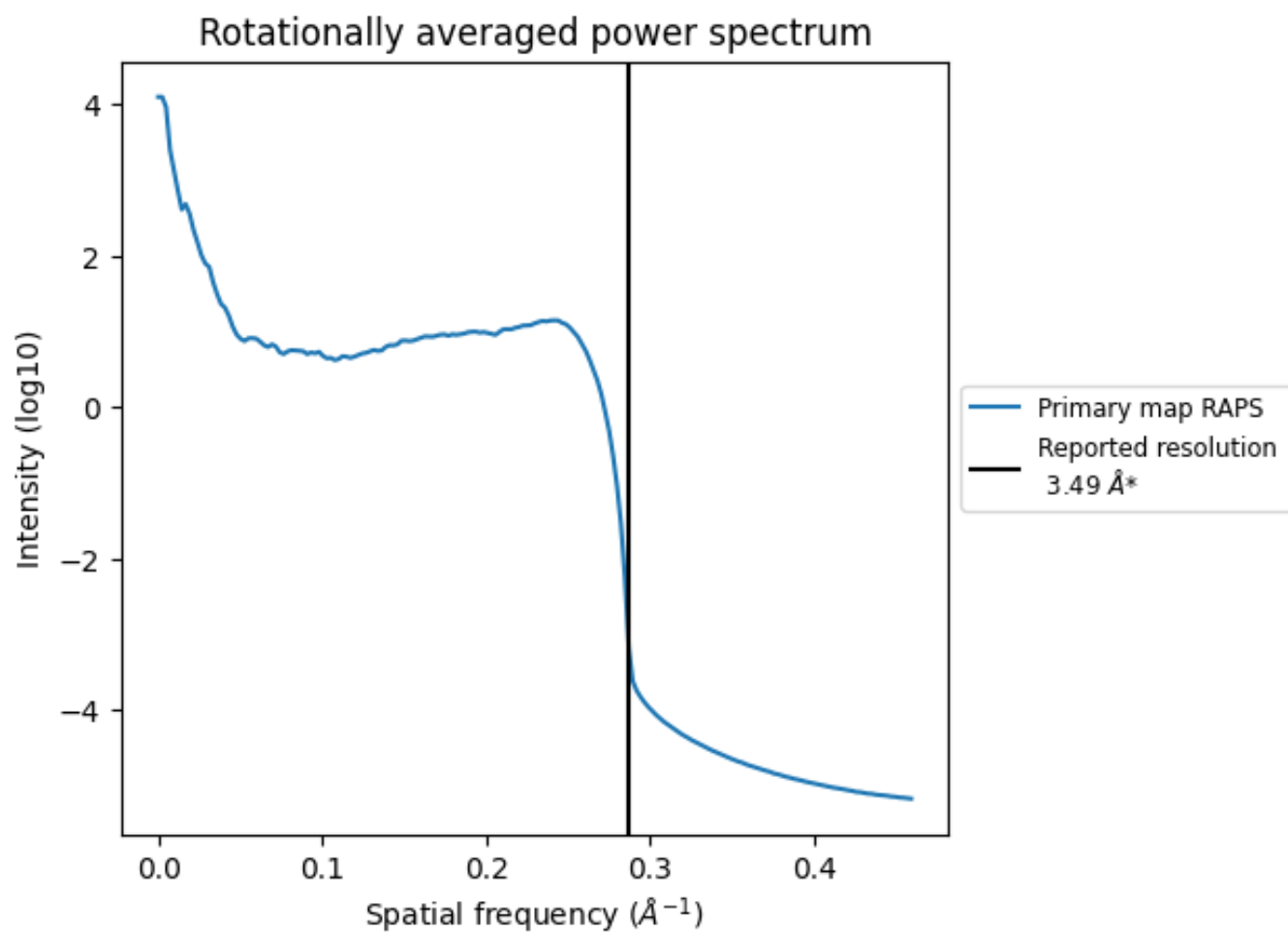
7.2 Volume estimate [i](#)



The volume at the recommended contour level is 279 nm³; this corresponds to an approximate mass of 252 kDa.

The volume estimate graph shows how the enclosed volume varies with the contour level. The recommended contour level is shown as a vertical line and the intersection between the line and the curve gives the volume of the enclosed surface at the given level.

7.3 Rotationally averaged power spectrum i



*Reported resolution corresponds to spatial frequency of 0.287 Å⁻¹

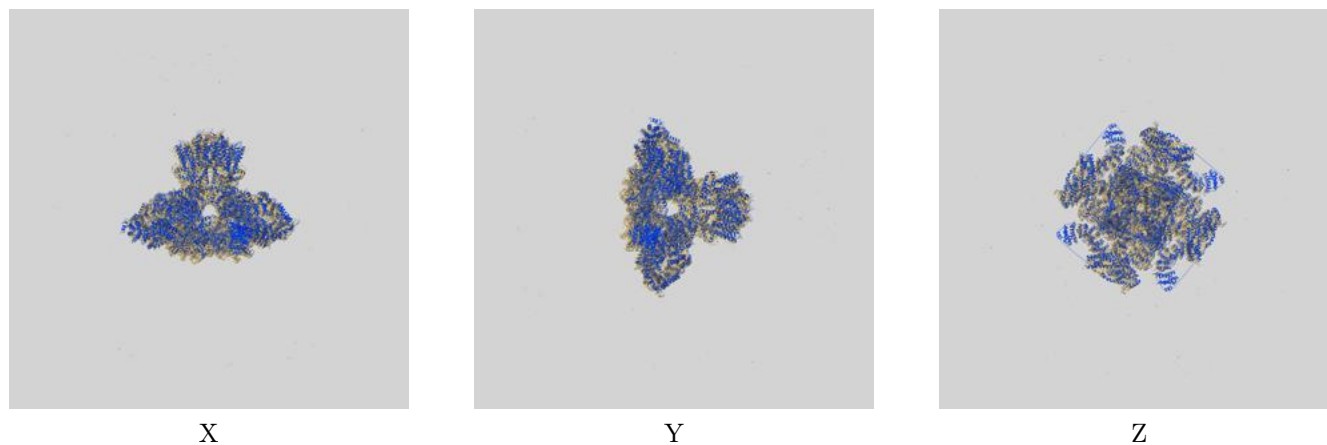
8 Fourier-Shell correlation

This section was not generated. No FSC curve or half-maps provided.

9 Map-model fit [i](#)

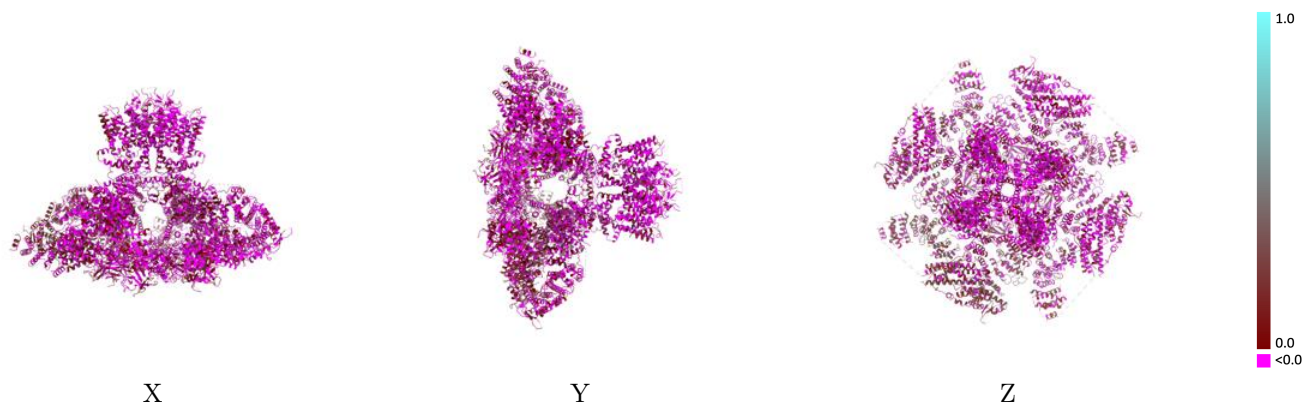
This section contains information regarding the fit between EMDB map EMD-7978 and PDB model 6DQJ. Per-residue inclusion information can be found in section 3 on page 4.

9.1 Map-model overlay [i](#)



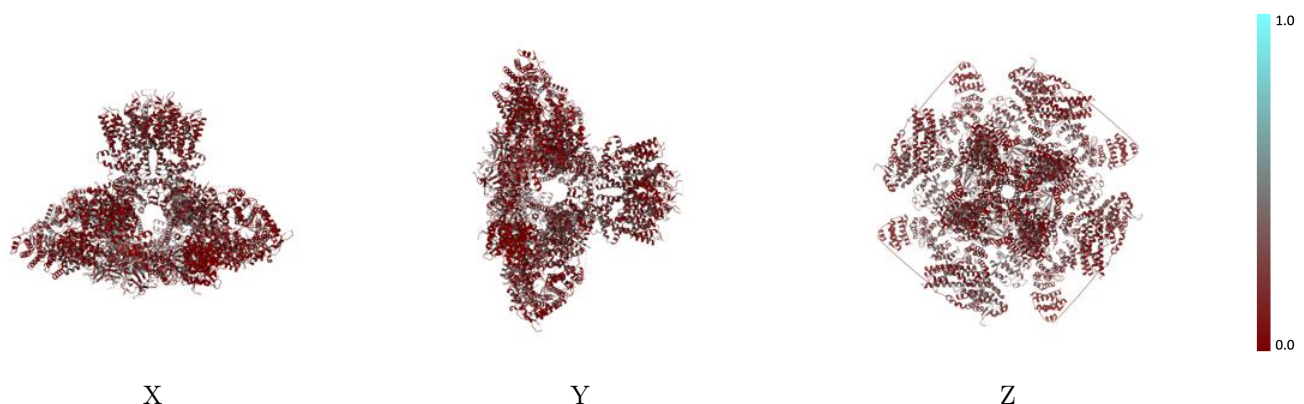
The images above show the 3D surface view of the map at the recommended contour level 5.72 at 50% transparency in yellow overlaid with a ribbon representation of the model coloured in blue. These images allow for the visual assessment of the quality of fit between the atomic model and the map.

9.2 Q-score mapped to coordinate model [i](#)



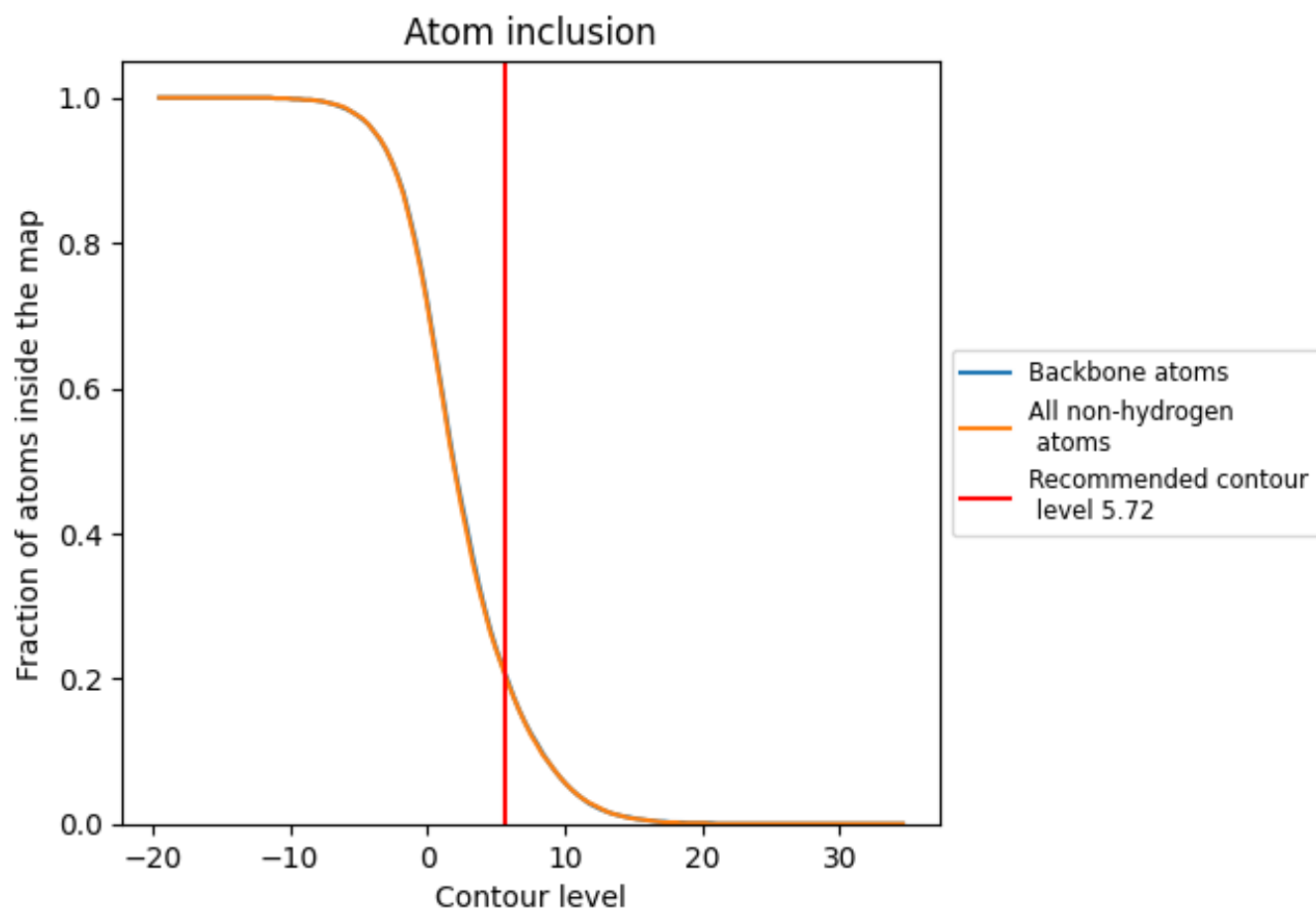
The images above show the model with each residue coloured according its Q-score. This shows their resolvability in the map with higher Q-score values reflecting better resolvability. Please note: Q-score is calculating the resolvability of atoms, and thus high values are only expected at resolutions at which atoms can be resolved. Low Q-score values may therefore be expected for many entries.

9.3 Atom inclusion mapped to coordinate model [i](#)



The images above show the model with each residue coloured according to its atom inclusion. This shows to what extent they are inside the map at the recommended contour level (5.72).

9.4 Atom inclusion [i](#)



At the recommended contour level, 20% of all backbone atoms, 20% of all non-hydrogen atoms, are inside the map.

9.5 Map-model fit summary [i](#)

The table lists the average atom inclusion at the recommended contour level (5.72) and Q-score for the entire model and for each chain.

Chain	Atom inclusion	Q-score
All	0.2020	0.0040
A	0.1850	-0.0320
B	0.2120	0.0190
C	0.2350	0.0570
D	0.1840	-0.0260

